

ROUTE NO.	SECTION	COUNTY	TOTAL SHEETS	SHEET NO.
FAP 116	*	RICHLAND	31	28
STA.		TO STA.		
FED. ROAD DIST. NO.	ILLINOIS	FED. AID PROJECT		

\* D-7 Joint Repairs 2006-3

Joint Size	"C" at 50°F	"D" at 50°F
2	2"	1 1/2" min.
2 1/2	2 1/2"	1 3/4" min.
4	3"	2 1/4" min.

**INSTALLATION NOTES**

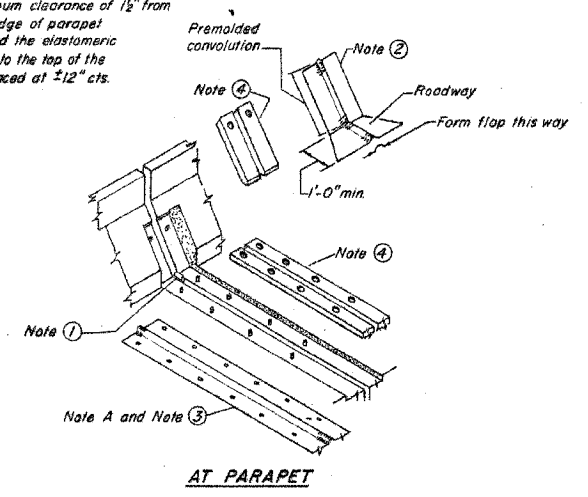
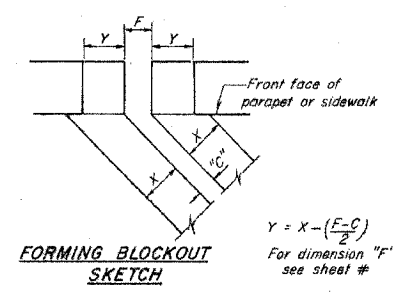
Use anchor blocks and continuous seal as anchor bolt location templates.

1. Install sponge mandrels into positions shown to form flap convolution.
2. Install parapet or sidewalk piece (trim roadway flap to fit before applying epoxy).
3. Install continuous seal in roadway.
4. Install anchor blocks as indicated.

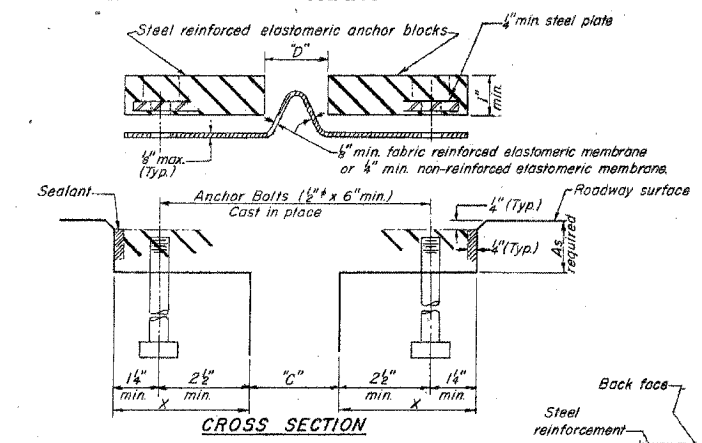
NOTE A - Maximum spacing of anchor bolts shall be 12" centers.

**SKREW LIMITATIONS**

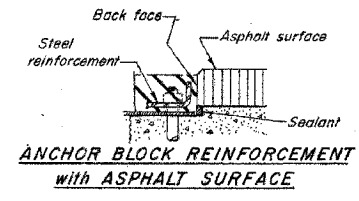
The details of the anchor blocks and the elastomeric membrane in the parapet, as shown, are for up to 50° skews. For skews greater than 50°, the anchor blocks and the elastomeric membrane, installed in accordance with dimension "D", might require modifications to insure a minimum clearance of 1/2" from centerline of anchor studs to edge of parapet opening. The anchor blocks and the elastomeric membrane shall also be installed to the top of the parapet with the anchor studs spaced at 2 1/2" cts.



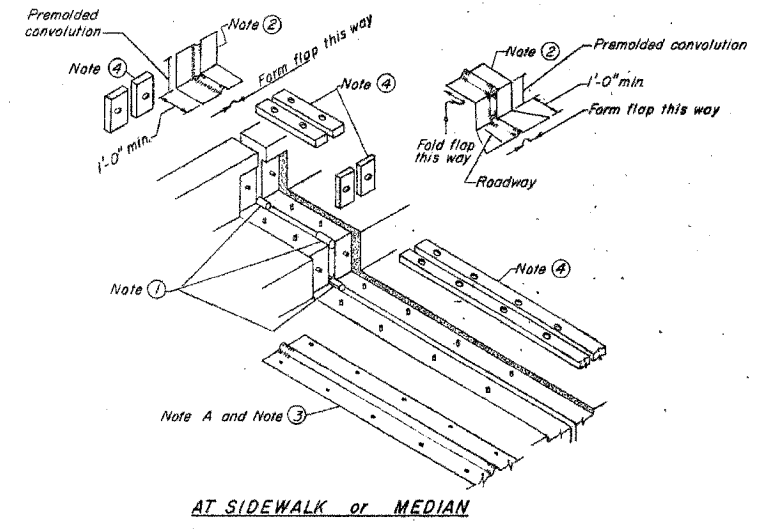
AT PARAPET



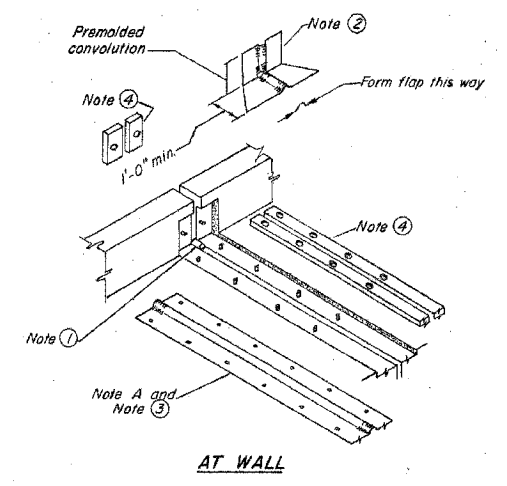
CROSS SECTION



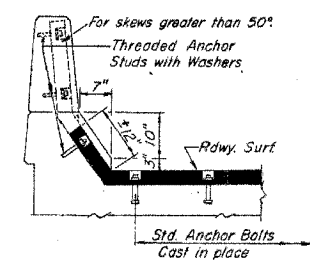
ANCHOR BLOCK REINFORCEMENT with ASPHALT SURFACE



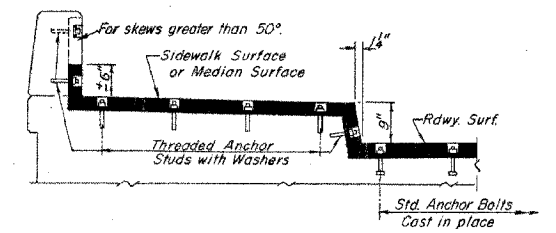
AT SIDEWALK or MEDIAN



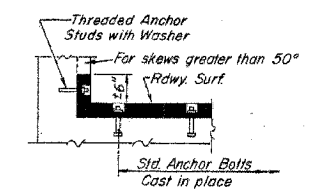
AT WALL



AT PARAPET



AT SIDEWALK or MEDIAN



AT WALL

TYPICAL END TREATMENTS

**CONTINUOUS SEAL TYPE NEOPRENE EXPANSION JOINTS**  
For 2", 2 1/2" and 4" Movement

ILLINOIS RTE. 130 OVER  
LONG BRANCH CREEK  
STATION 745+75  
FA RTE. 116 SECTION 123 BR-2  
RICHLAND COUNTY

DESIGNED
CHECKED
DRAWN
CHECKED

EJ-CS 2-1-83