

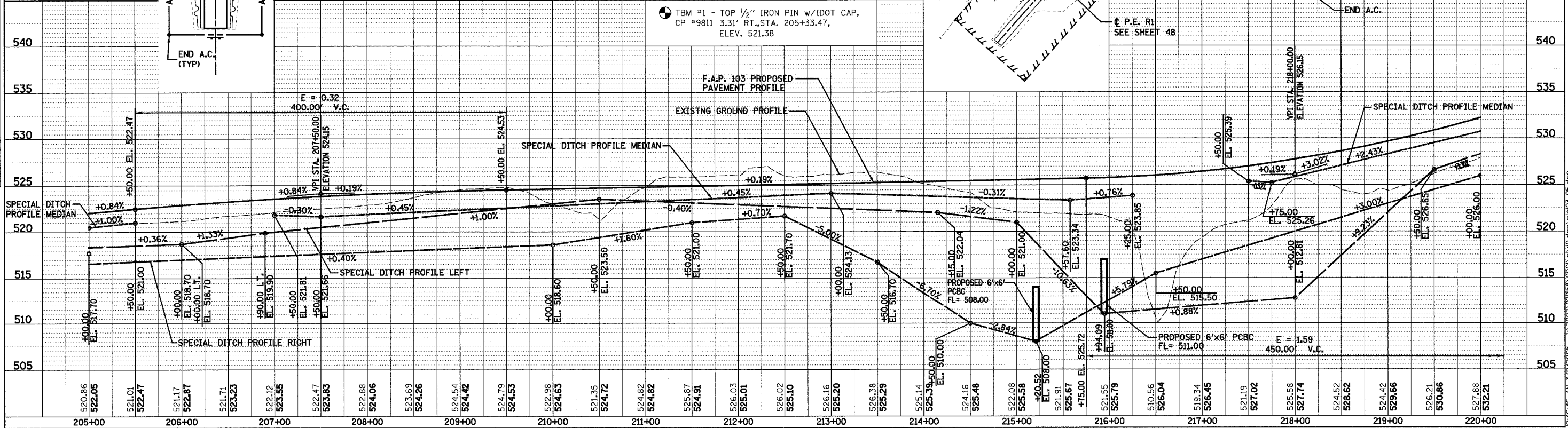
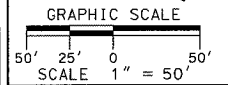
F.A.P. RTE.	SECTION	COUNTY	TOTAL SHEETS	SHEET NO.
103	27-1R	ST. CLAIR	382	29
STA. 205+00.00 TO STA. 220+00.00		CONTRACT NO. 76300		
FED. ROAD DIST. NO.		ILLINOIS FED. AID PROJECT		
		TEMP. CONSTRUCTION ESMT.		

NOTE:
SEE SHEET 166 FOR INTERSECTION
DETAIL FOR JEFFERSON ROAD AND
ACCESS ROAD RT. 2

NOTE:
SEE SHEET 172 FOR INTERSECTION
DETAIL FOR PHANNIBACKER ROAD

UNDERGROUND FACILITIES, STRUCTURES AND UTILITIES HAVE BEEN PLOTTED FROM FIELD MEASUREMENTS AND AVAILABLE RECORDS. THEIR LOCATIONS MUST THEREFORE BE CONSIDERED APPROXIMATE. THERE MAY BE OTHERS, THE EXISTENCE OF WHICH IS NOT PRESENTLY KNOWN. IT IS THE CONTRACTOR'S RESPONSIBILITY TO HAVE ALL UTILITIES LOCATED IN THE FIELD PRIOR TO CONSTRUCTION TO AVOID DAMAGE THERETO.

TBM #1 - TOP 1/2" IRON PIN w/IDOT CAP,
CP #9811 3.31' RT., STA. 205+33.47,
ELEV. 521.38



DATE	BY	REVISION

DATE	BY	REVISION

104646 AM 3/7/2005 J:\2002\02058\000\civil\dn\pin03_05.dgn