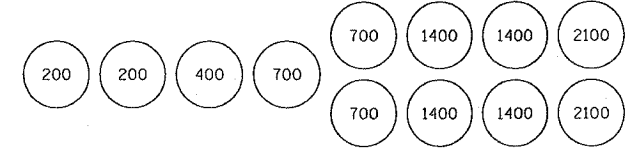


F.A.U. RTE.	SECTION	COUNTY	TOTAL SHEETS	SHEET NO.
9251	28-3BR-I	ST. CLAIR	101	15
STA. 241+50		TO STA. 247+50		
FED. ROAD DIST. NO.		ILLINOIS FED. AID PROJECT		

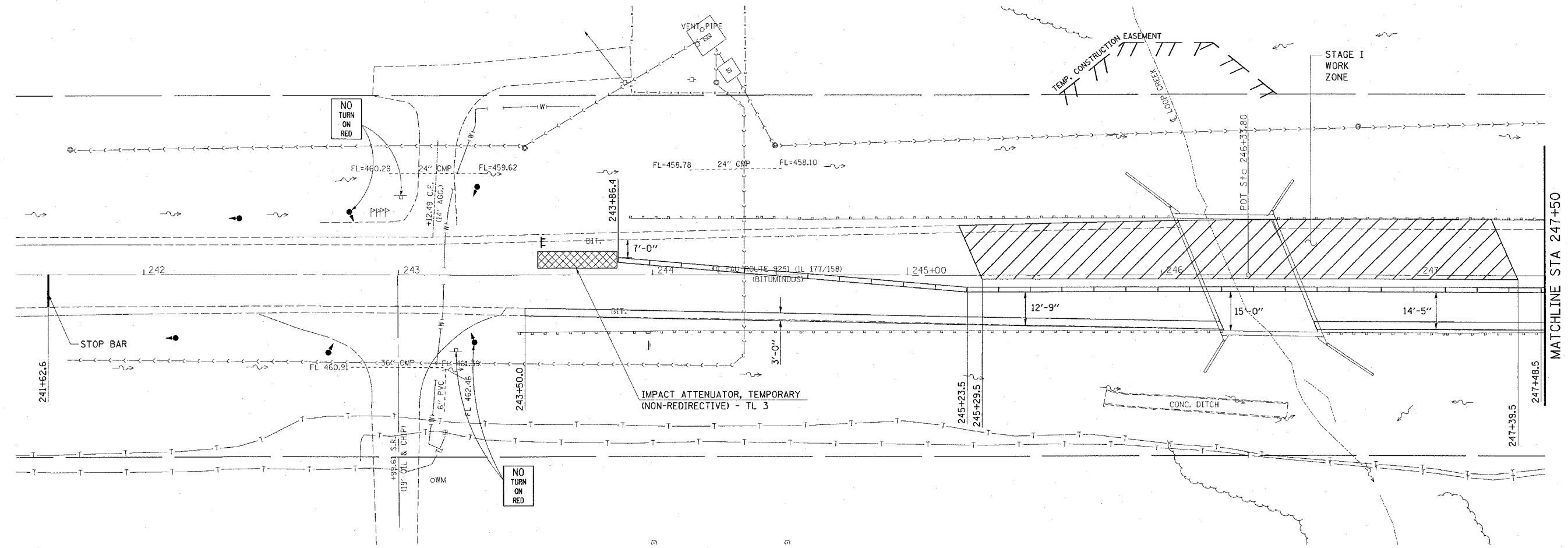


SAND MODULE IMPACT ATTENUATOR LAYOUT
(IF OPTION USED)

LEGEND

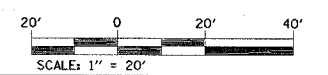
- IMPACT ATTENUATOR
- TEMPORARY CONCRETE BARRIER
- BARRELS OR BARRICADES WITH STEADY BURNING LIGHT
- TEMPORARY BRIDGE TRAFFIC SIGNALS
- TYPE III BARRICADE

PLAN	DATE
SURVEYED	
DESIGNED	
CHECKED	
IN CHARGE	
NOTE BOOK NO.	
DATE	
FILE NAME	



SEQUENCE OF CONSTRUCTION - STAGE I:

- PLACE 3.0' "BITUMINOUS BASE COURSE, SUPERPAVE, 9 1/2 INCH" ON BOTH ENDS OF THE STRUCTURE AS A PRE-STAGE TO STAGE I.
- PLACE STOP BARS AS SHOWN ON PLANS.
- REMOVE SKIP-DASH AND CONFLICTING SOLID EDGE PAVEMENT MARKINGS BETWEEN STOP BARS.
- REMOVE LEFT TURN LANE PAVEMENT MARKINGS.
- PLACE 500 FT TEMPORARY CONCRETE BARRIER AND 2 EACH IMPACT ATTENUATORS, TEMPORARY.
- SEE STANDARD 701321 FOR DETAILS NOT SHOWN ON PLANS.



REVISIONS	
NAME	DATE

ILLINOIS DEPARTMENT OF TRANSPORTATION
STAGE I CONSTRUCTION

FAU ROUTE 9251
 SECTION 28-3BR-I
 ST. CLAIR COUNTY
 SN 082-0057(E) 0398(P)

DRAWN BY: _____
 PLOT DATE: 3/22/2006

3/22/2006
 c:\p\proj\9251\2400\plan\2400a.dgn
 03/22/2006 10:10:10
 REF: 005770w, st10
 REF: 005770w, st10