
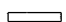



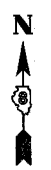
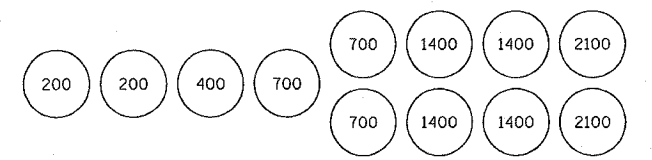


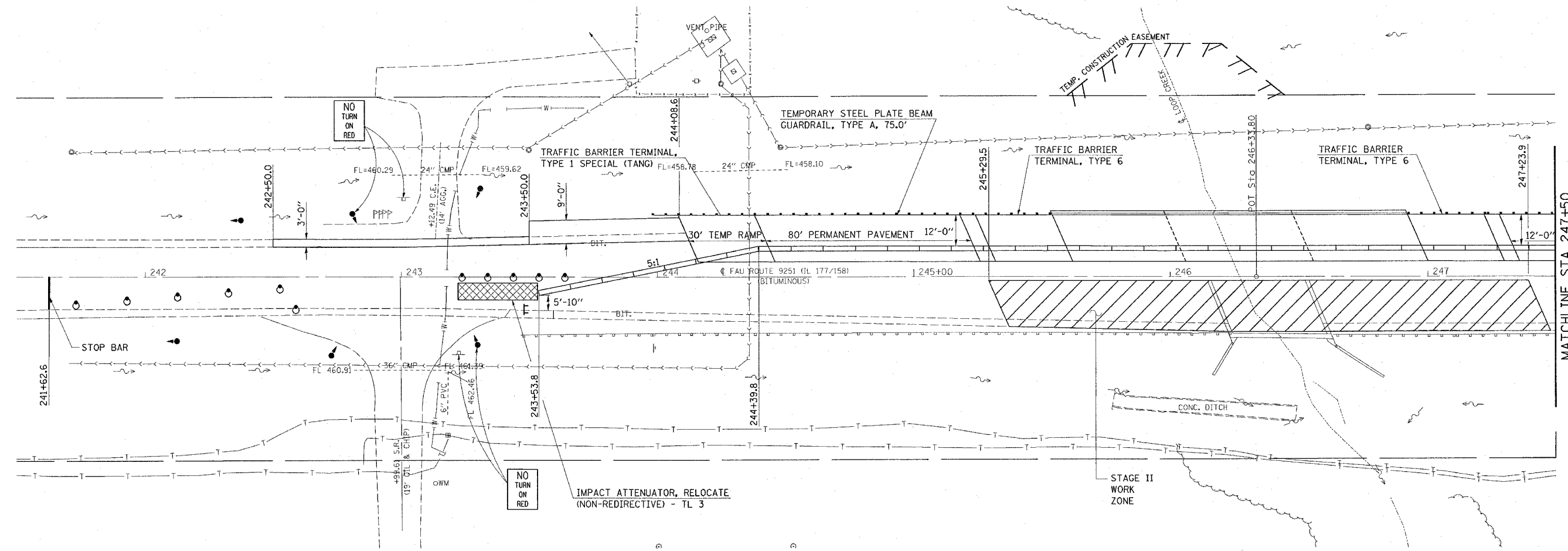
F.A.U. RTE.	SECTION	COUNTY	TOTAL SHEETS	SHEET NO.
9251	28-3BR-I	ST. CLAIR	101	17
STA. 241+50		TO STA. 247+50		
FED. ROAD DIST. NO.		ILLINOIS FED. AID PROJECT		

LEGEND

-  IMPACT ATTENUATOR
-  TEMPORARY CONCRETE BARRIER
-  BARRELS OR BARRICADES WITH STEADY BURNING LIGHT
-  TEMPORARY BRIDGE TRAFFIC SIGNALS
-  TYPE III BARRICADE



PLAN	SURVEYED	BY	DATE
NOTE BOOK NO.	RT. OF WAY CHECKED		
	ADJUSTMENT CHECKED		
	PAID FILE NAME		



SEQUENCE OF CONSTRUCTION - STAGE II:

PLACE 80 FT PERMANENT PAVEMENT ON BOTH ENDS OF THE STRUCTURE. PERMANENT PAVEMENT SHALL BE BINDER ONLY, LEAVING THE ROADWAY 1.5 INCHES LOWER AT THE CONNECTOR. PLACE 5 FT TEMPORARY RAMP AT CONNECTOR. TAPER END OF BINDER TO 9 INCHES THICK AND PLACE 30 FT TEMPORARY RAMP. SEE TEMPORARY RAMP DETAIL.

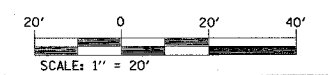
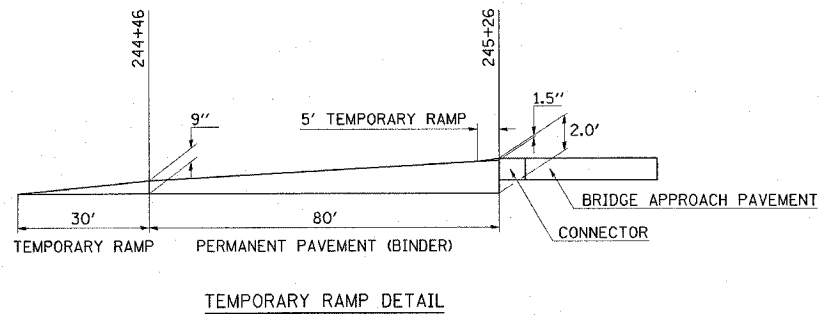
PLACE "BITUMINOUS BASE COURSE, SUPERPAVE 9 1/2 INCH" ON BOTH ENDS OF THE STRUCTURE. 3.0' FROM STA 242+50 LT TO STA 243+50 LT, 9.0' FROM STA 243+50 LT TO STA 244+08.6 LT, AND 6.0' FROM STA 248+38.1 LT TO STA 249+00 LT.

PLACE TRAFFIC BARRIER TERMINAL, TYPE 1 AND TYPE 6 AND TEMPORARY GUARDRAIL ON BOTH ENDS OF STRUCTURE.

RELOCATE 500 FT AND PLACE ADDITIONAL 112.5 FT OF TEMPORARY CONCRETE BARRIER AND RELOCATE 2 EACH IMPACT ATTENUATORS.

SEE STANDARD 701321 FOR DETAILS NOT SHOWN ON PLANS.

AFTER STRUCTURE IS COMPLETE, REMOVE BARRIER AND PAVE STAGE II IN THE SAME DAY. BARRELS MAY BE USED DURING PAVING IN PLACE OF THE CONCRETE BARRIER.



REVISIONS	
NAME	DATE

ILLINOIS DEPARTMENT OF TRANSPORTATION

STAGE II CONSTRUCTION

FAU ROUTE 9251
SECTION 28-3BR-I
ST. CLAIR COUNTY
SN 082-0057(E) 0398(P)

DRAWN BY:

3/22/2006
 c:\p\o\sect\p2006\p2006\p2006\p2006.dgn
 REF-00371.DWG
 REF-0057.PCW