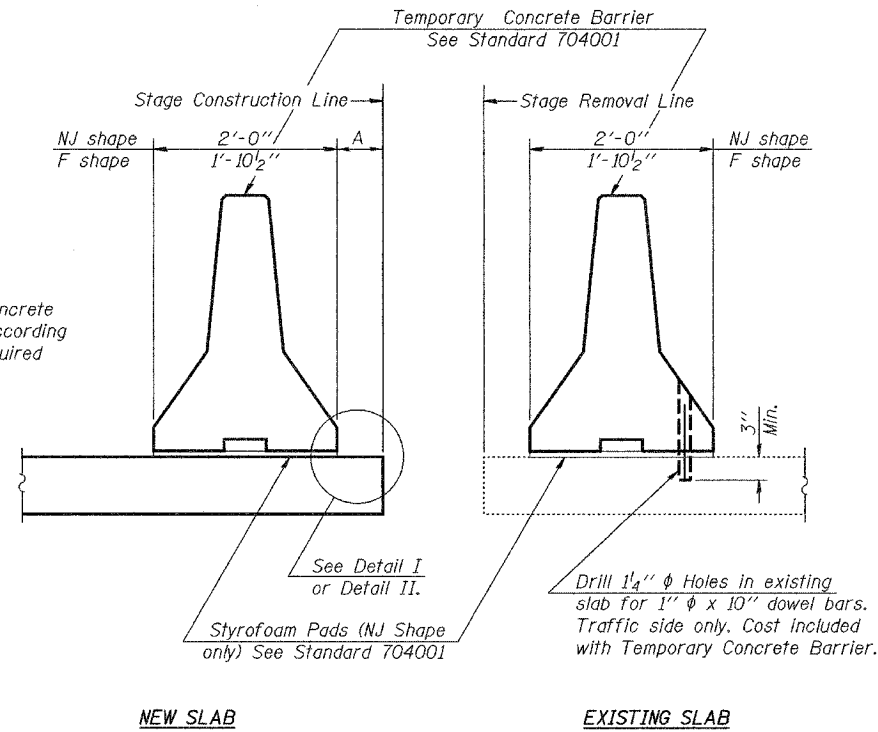


STATE OF ILLINOIS
DEPARTMENT OF TRANSPORTATION

| | | | | |
|-----------------------|-----------|------------------|--------------|-----------|
| ROUTE NO. | SECTION | COUNTY | TOTAL SHEETS | SHEET NO. |
| F.A.U. 9251 | 28-3 BR-1 | ST. CLAIR | 101 | 26 |
| FED. ROAD DIST. NO. 7 | ILLINOIS | FED. AID PROJECT | | |

Contract #76394

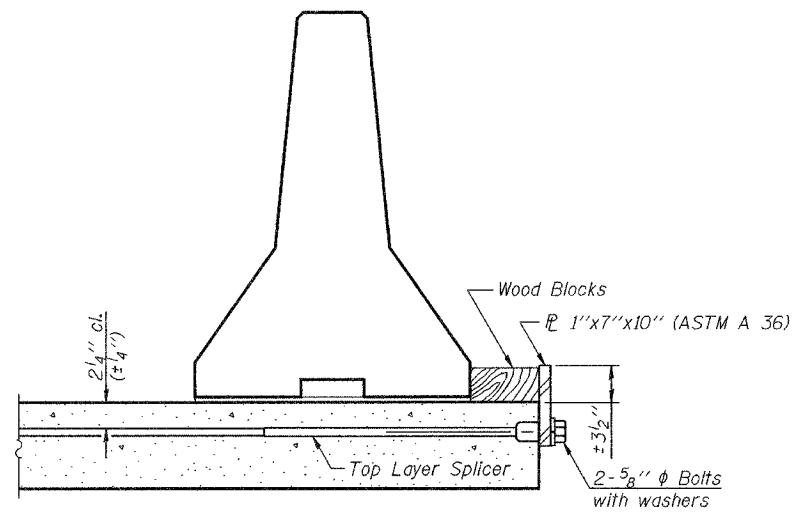


When "A" is 3'-6" or less, the temporary concrete barrier shall be anchored to the new slab according to Detail I or Detail II. No anchorage is required when "A" is greater than 3'-6".

NOTES

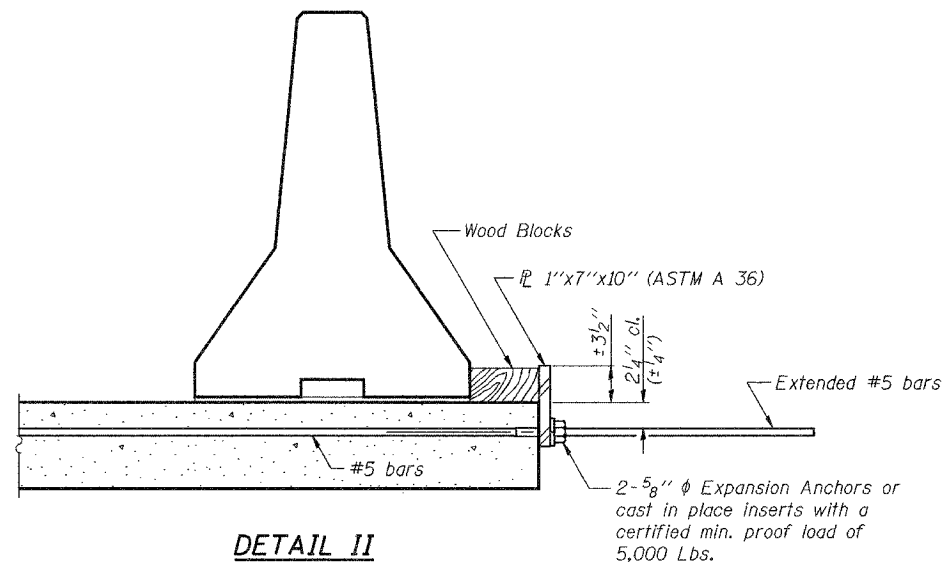
- Detail I - With Bar Splicer or Couplers:**
Connect one (1) 1"x7"x10" steel \bar{L} to the top layer of couplers with 2-5/8" ϕ bolts screwed to coupler at approximate \bar{C} of each barrier panel.
- Detail II - With Extended Reinforcement Bars:**
Connect one (1) 1"x7"x10" steel \bar{L} to the concrete slab with 2-5/8" ϕ Expansion Anchors or cast in place inserts spaced between the top layer of reinforcement at approximate \bar{C} of each barrier panel.
- Cost of anchorage is included with Temporary Concrete Barrier.

SECTION THRU SLAB



DETAIL I

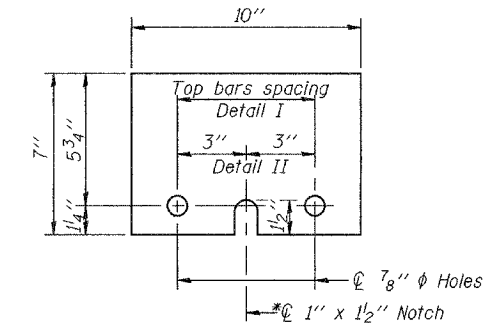
The 1"x7"x10" Plate shall not be removed until Stage II Construction forms and reinforcement bars are in place.



DETAIL II

The 1"x7"x10" Plate shall not be removed until Stage II Construction forms and all reinforcement bars are in place and the concrete is ready to be placed.

DETAIL I



1" x 7" x 10"

*Required only with Detail II

| | |
|----------|---------------|
| DESIGNED | Rebecca Tharp |
| CHECKED | Curt Evoy |
| DRAWN | R. Sommer |
| CHECKED | RLT/CME |

| | | |
|----------|----------------|----------------------|
| EXAMINED | March 16, 2006 | Thomas J. Domagalaki |
| PASSED | | Ralph E. Anderson |

R-27 10-22-04

**TEMPORARY CONCRETE BARRIER
FOR STAGE CONSTRUCTION
F.A.U. ROUTE 9251 - SECTION 28-3BR-1
ST. CLAIR COUNTY
STATION 246+33.80
STRUCTURE NO. 082-0398**