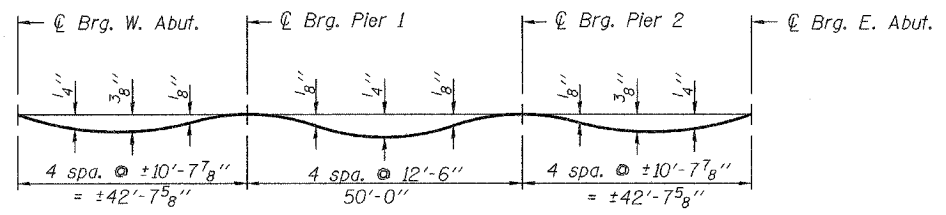


STATE OF ILLINOIS  
DEPARTMENT OF TRANSPORTATION

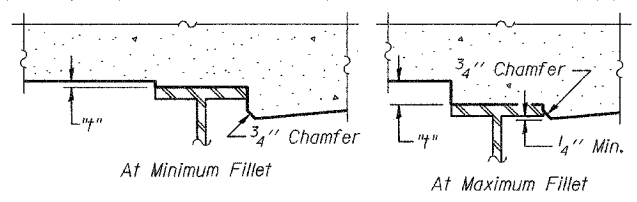
ROUTE NO. F.A.U. 9251	SECTION 28-3 BR-1	COUNTY ST. CLAIR	TOTAL SHEETS 101	SHEET NO. 27	SHEET NO. 4 18 SHEETS
FED. ROAD DIST. NO. 7		ILLINOIS		FED. AID PROJECT-	

Contract #76394



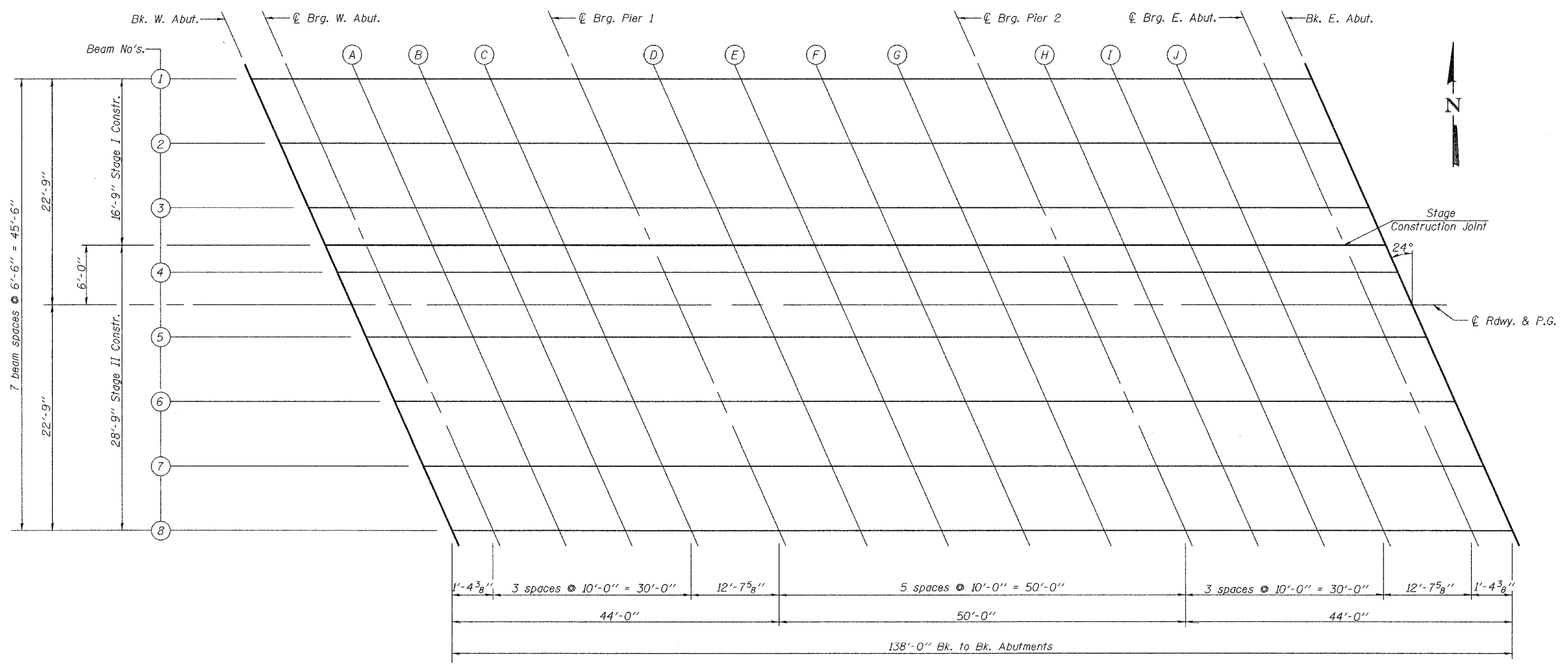
**DEAD LOAD DEFLECTION DIAGRAM**  
(Includes weight of concrete only.)

Note:  
The above deflections are not to be used in the field if the engineer is working from the grade elevations adjusted for dead load deflections as shown on sheet 5 of 18.



To determine "t": After all structural steel has been erected, elevations of the top flanges of the beams shall be taken at intervals shown below. These elevations subtracted from the "Theoretical Grade Elevations Adjusted for Dead Load Deflection" shown on sheet 5 of 18, minus slab thickness, equals the fillet heights "t" above top flange of beams.

**FILLET HEIGHTS**



**PLAN**

DESIGNED	Rebecca Tharp
CHECKED	Curt Evoy
DRAWN	R. Sommer
CHECKED	RLT/CME

March 16, 2006  
EXAMINED *Thomas J. Demagalki*  
PASSED *Ralph E. Anderson*  
ENGINEER OF BRIDGES AND STRUCTURES

**TOP OF SLAB ELEVATIONS**  
F.A.U. ROUTE 9251 - SECTION 28-3BR-1  
ST. CLAIR COUNTY  
STATION 246+33.80  
STRUCTURE NO. 082-0398