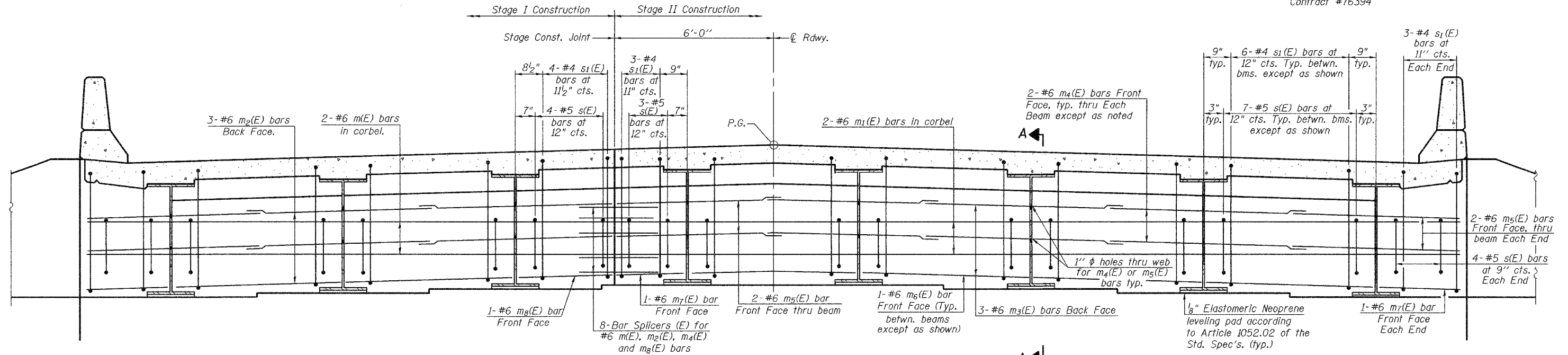


STATE OF ILLINOIS
DEPARTMENT OF TRANSPORTATION

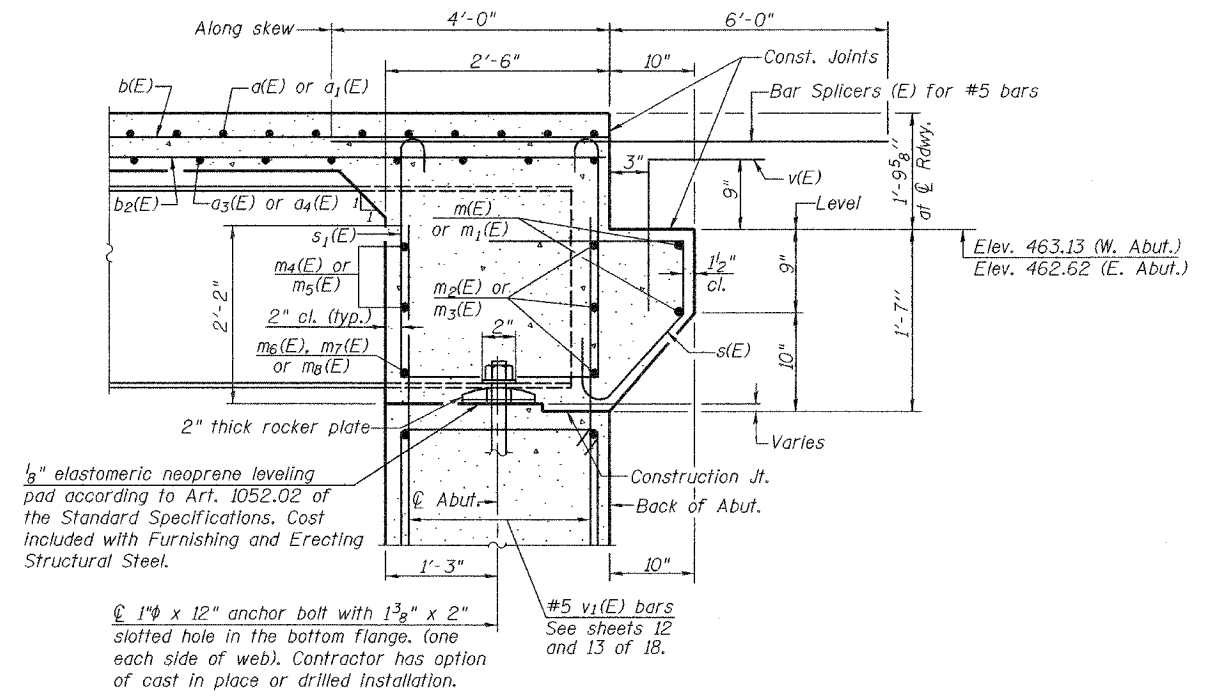
ROUTE NO.	SECTION	COUNTY	STATION	SHEET NO.	SHEET NO. 8
F.A.U. 9251	28-3 BR-1	ST. CLAIR	101	31	18 SHEETS
FED. ROAD DIST. NO. 7	ILLINOIS	FED. AID PROJECT	Contract #76394		



DIAPHRAGM ELEVATION AT ABUTMENT
(Looking East at East Abut. shown-West Abut. similar)

MIN. BAR LAP
#6 bar = 2'-9"

Notes: Reinforcement bars in diaphragm are billed with superstructure on sheet 7 of 18.
Concrete in diaphragm is included with Concrete Superstructure on sheet 7 of 18.
For details of bars s(E) & s1(E) see sheet 7 of 18.
For anchor bolt details see sheet 11 of 18.
See sheet 16 of 18 for bar splicer details.
See sheet 10 of 18 for holes thru web for m4(E) and m5(E) bars.
The s(E) and s1(E) bars shall be placed parallel to the to the beams. Spacing for these bars shall be at right angles to the beams.



SECTION A-A
(Dimensions at Right L's except as noted)

DESIGNED	Rebecca Tharp
CHECKED	Curt Evoy
DRAWN	R. Sommer
CHECKED	RLT/CME

March 16, 2006
EXAMINED *Thomas J. Domagalaki*
PASSED *Ralph E. Anderson*
ENGINEER OF BRIDGES AND STRUCTURES

DIAPHRAGM DETAILS
F.A.U. ROUTE 9251 - SECTION 28-3BR-1
ST. CLAIR COUNTY
STATION 246+33.80
STRUCTURE NO. 082-0398