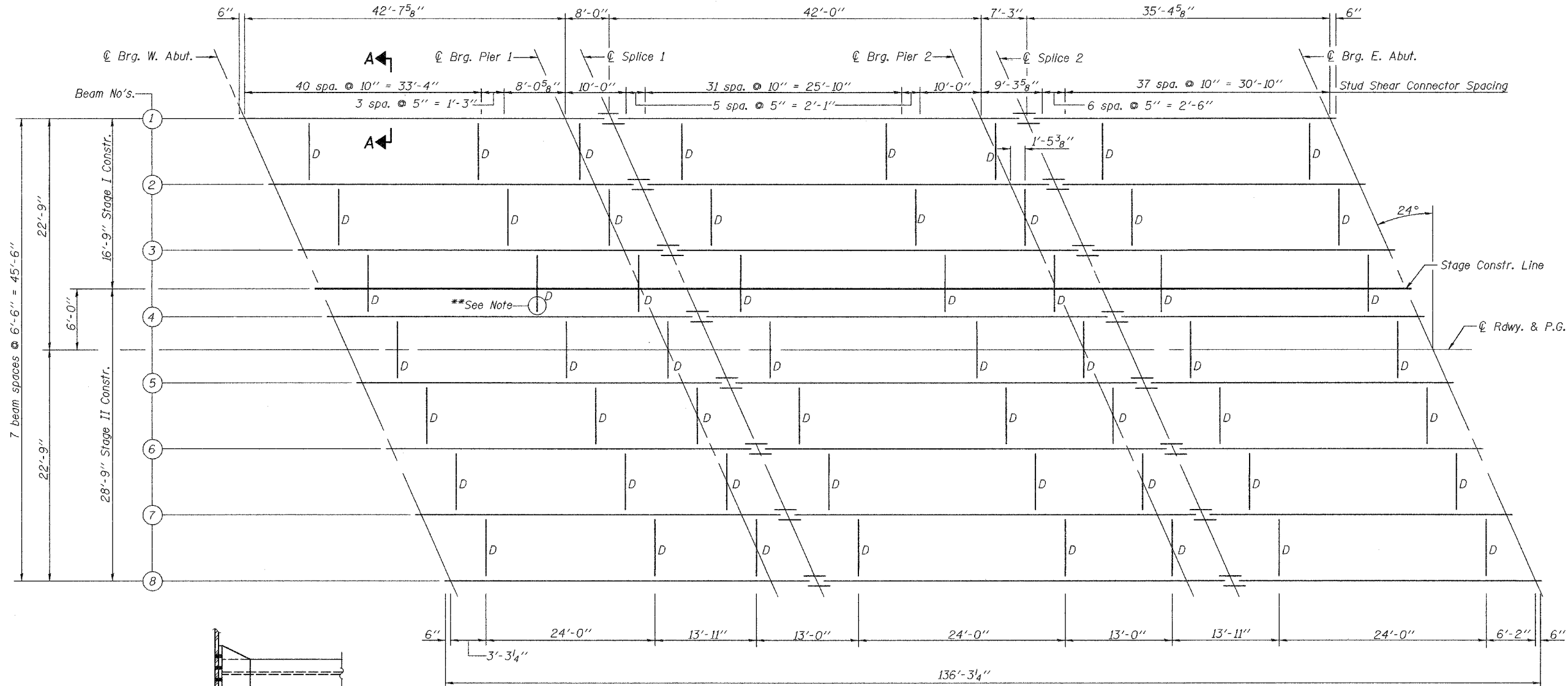


STATE OF ILLINOIS  
DEPARTMENT OF TRANSPORTATION

ROUTE NO.	SECTION	COUNTY	TOTAL SHEETS	SHEET NO.	SHEET NO. 9 18 SHEETS
F.A.U. 9251	28-3 BR-I	ST. CLAIR	101	32	
FED. ROAD DIST. NO. 7	ILLINOIS	FED. AID PROJECT-			

Contract #76394



**FRAMING PLAN**

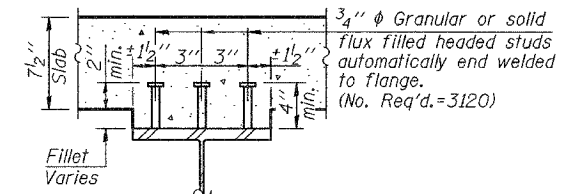
All beams shall be W24x76 AASHTO M270, Grade 50 (NTR)

\*\*Use 1 1/2" x 12" vertical slotted holes in top and bottom angles at North side of Beam 4 only, except at Piers. Provide 1 5/16" plate washers for slotted holes. The bolts for slotted holes in angles shall only be finger tightened prior to the deck pour for Stage II Construction. The bolts shall be fully tightened after completion of the deck pour for Stage II Construction.

**\*TOP OF BEAM ELEVATIONS**

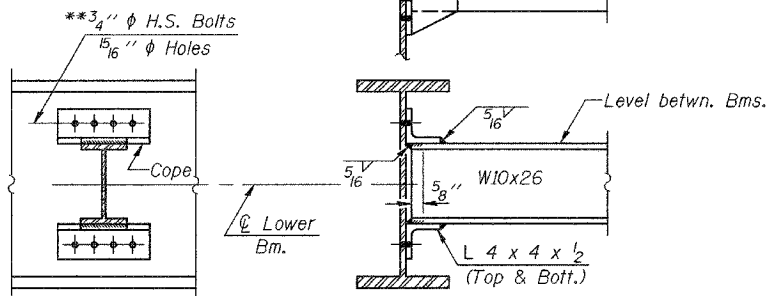
Location	℄ Brg. W. Abut.	℄ Brg. Pier 1	℄ Splice 1	℄ Brg. Pier 2	℄ Splice 2	℄ Brg. E. Abut.
Beam 1	463.89	463.78	463.75	463.61	463.58	463.45
Beam 2	464.01	463.89	463.87	463.72	463.69	463.55
Beam 3	464.11	463.99	463.96	463.81	463.78	463.64
Beam 4	464.21	464.08	464.06	463.90	463.87	463.72
Beam 5	464.21	464.07	464.05	463.89	463.86	463.71
Beam 6	464.10	463.96	463.94	463.77	463.74	463.59
Beam 7	463.99	463.85	463.83	463.66	463.63	463.47
Beam 8	463.86	463.72	463.69	463.52	463.48	463.32

\*For fabrication use only.



**SECTION A-A**

**STRUCTURAL STEEL**  
F.A.U. ROUTE 9251 - SECTION 28-3BR-I  
ST. CLAIR COUNTY  
STATION 246+33.80  
STRUCTURE NO. 082-0398



**DIAPHRAGM D**  
(56 Required)

Notes: "NTR" denotes members to which Notch Toughness Requirements are applicable. Two hardened washers shall be required over all oversize holes for diaphragms.

DESIGNED	Rebecca Tharp
CHECKED	Curt Evoy
DRAWN	R. Sommer
CHECKED	RLT/CME

EXAMINED	March 16, 2006
PASSED	Thomas J. Domagala ENGINEER OF BRIDGE DESIGN
	Ralph E. Anderson ENGINEER OF BRIDGES AND STRUCTURES