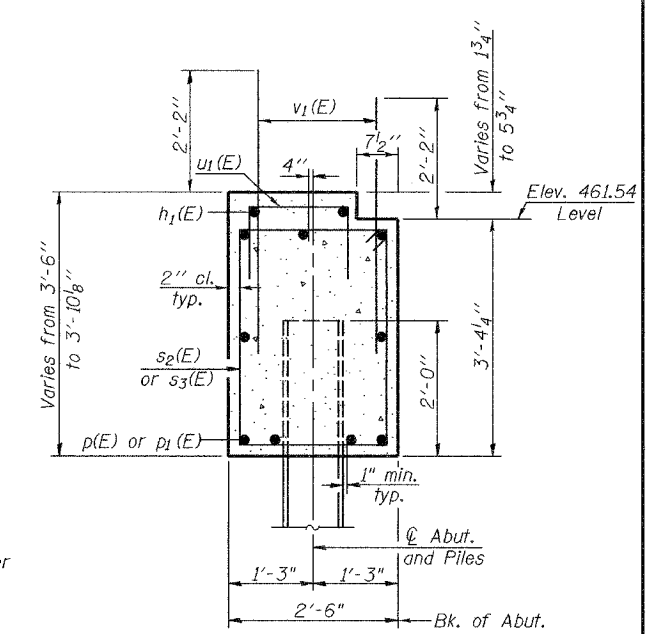
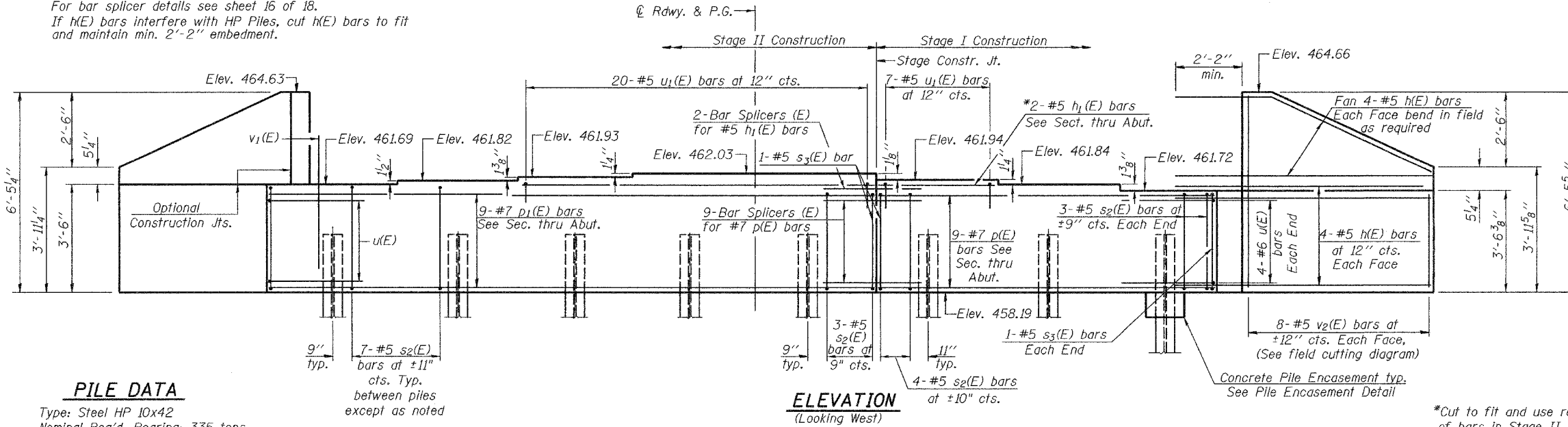


STATE OF ILLINOIS
DEPARTMENT OF TRANSPORTATION

ROUTE NO.	SECTION	COUNTY	TOTAL SHEETS	SHEET NO.	SHEET NO.
F.A.U. 9251	28-3 BR-1	ST. CLAIR	101	35	18 SHEETS

Contract #76394

Notes: Pour steps monolithically with cap.
Reinforcement bars designated (E) shall be epoxy coated.
For anchor bolt installation details see sheet 11 of 18.
For bar splicer details see sheet 16 of 18.
If h(E) bars interfere with HP Piles, cut h(E) bars to fit and maintain min. 2'-2" embedment.

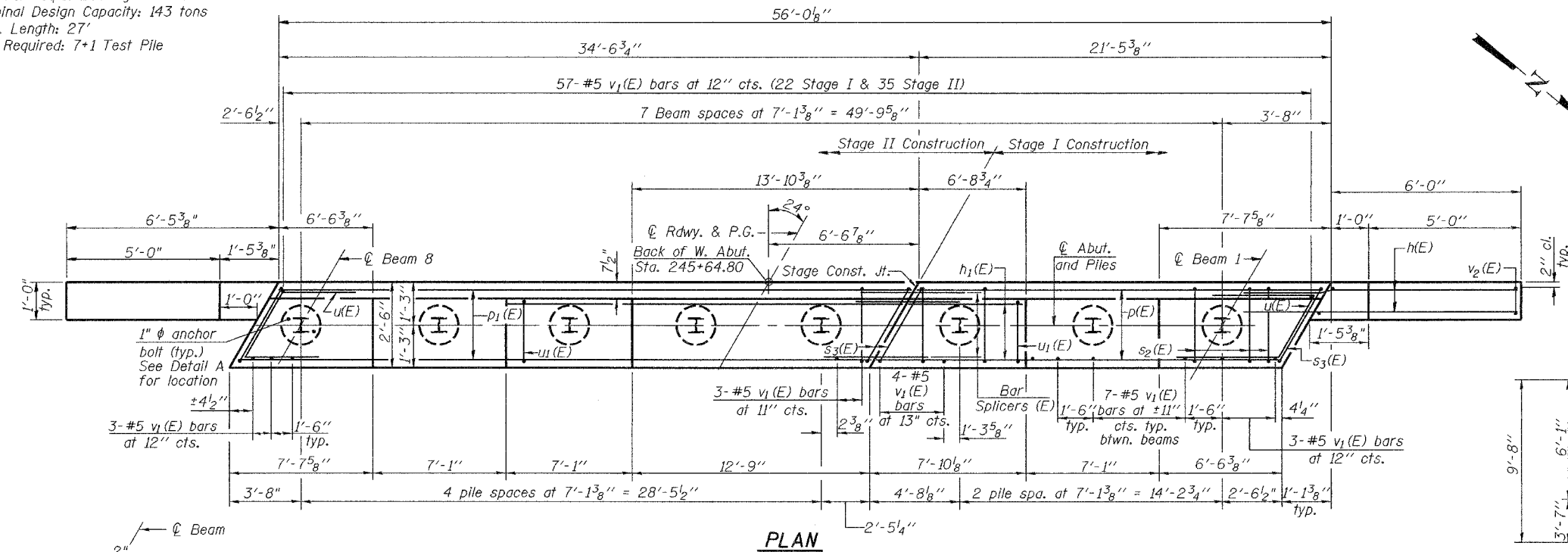


SEC. THRU ABUT.

PILE DATA

Type: Steel HP 10x42
Nominal Req'd. Bearing: 335 tons
Nominal Design Capacity: 143 tons
Est. Length: 27'
No. Required: 7+1 Test Pile

ELEVATION
(Looking West)



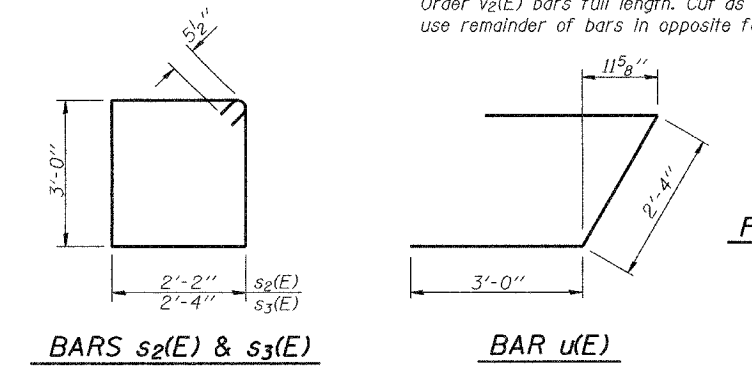
PLAN

BILL OF MATERIAL

Bar No.	Size	Length	Shape
h(E)	#5	9'-1"	—
h1(E)	#5	27'-0"	—
p(E)	#7	21'-1"	—
p1(E)	#7	34'-2"	—
s2(E)	#5	11'-3"	□
s3(E)	#5	11'-7"	□
u(E)	#6	8'-4"	┘
u1(E)	#5	3'-6"	┘
v1(E)	#5	4'-4"	—
v2(E)	#5	9'-8"	—
Concrete Structures	Cu. Yd.	21.2	
Reinforcement Bars Epoxy Coated	Pound	2940	
Structure Excavation	Cu. Yd.	102	
Furnishing Steel Piles HP10x42	Foot	189	
Driving Piles	Foot	189	
Test Pile Steel HP10x42	Each	1	

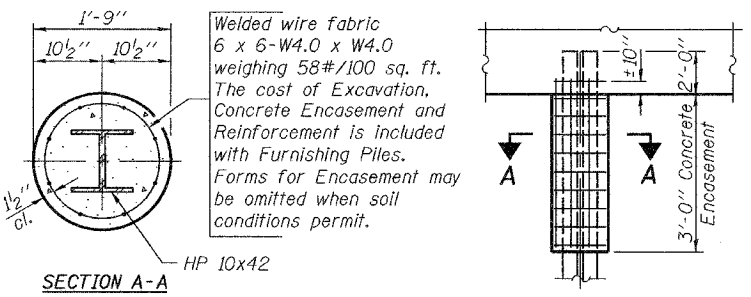
FIELD CUTTING DIAGRAM

Order v2(E) bars full length. Cut as shown and use remainder of bars in opposite face.

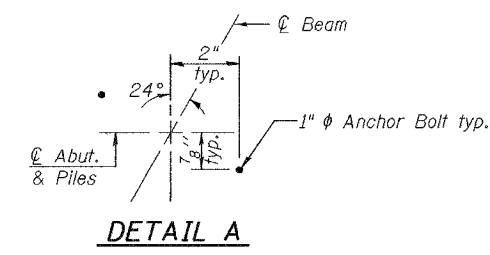


BARS s2(E) & s3(E)

BAR u(E)



PILE ENCASUREMENT DETAIL



DETAIL A

DESIGNED	Rebecca Tharp	March 16, 2006
CHECKED	Curt Evoy	EXAMINED Thomas J. Domagalaki
DRAWN	R. Sommer	PASSED Ralph E. Anderson
CHECKED	RLT/CME	ENGINEER OF BRIDGES AND STRUCTURES

WEST ABUTMENT
F.A.U. ROUTE 9251 - SECTION 28-3BR-1
ST. CLAIR COUNTY
STATION 246+33.80
STRUCTURE NO. 082-0398