




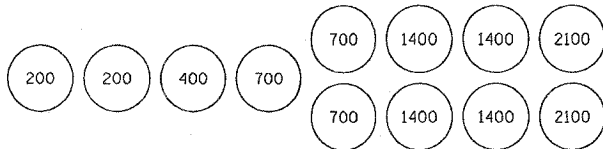


F.A.S. RTE.	SECTION	COUNTY	TOTAL SHEETS	SHEET NO.
1848	28-4BR	ST. CLAIR	101	60
STA. 351+50		TO STA. 357+50		
FED. ROAD DIST. NO.		ILLINOIS	FED. AID PROJECT	

LEGEND

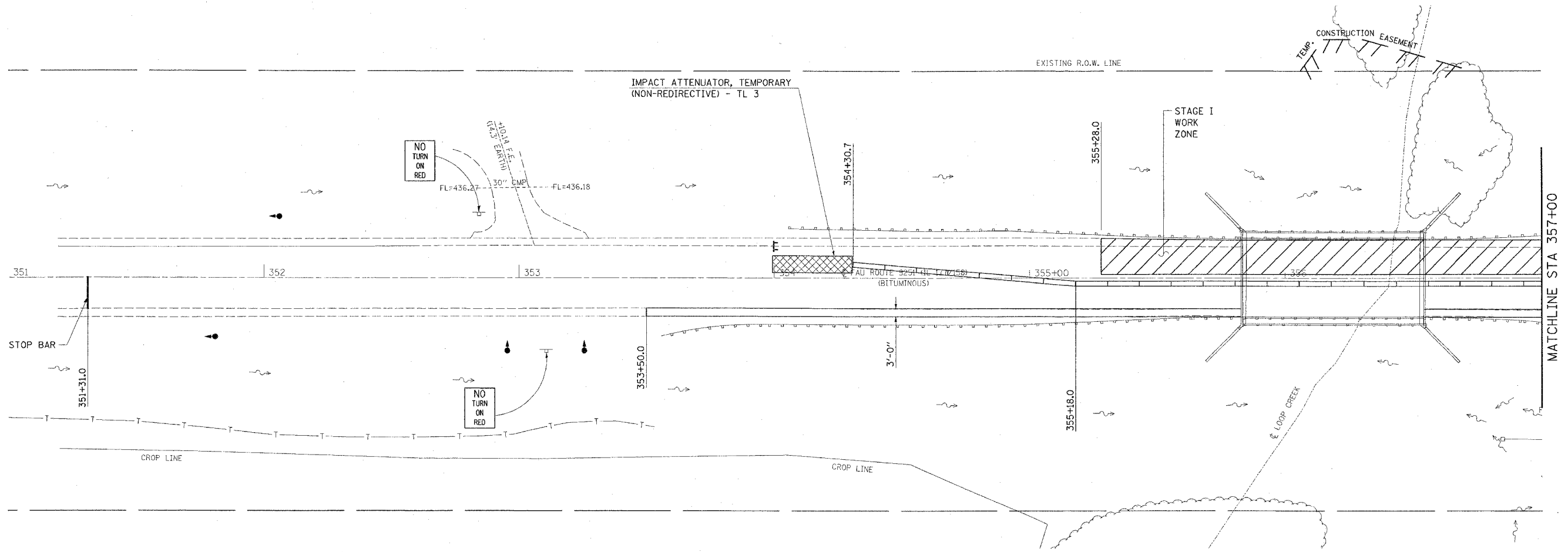
-  IMPACT ATTENUATOR
-  TEMPORARY CONCRETE BARRIER
-  BARRELS OR BARRICADES WITH STEADY BURNING LIGHT
-  TEMPORARY BRIDGE TRAFFIC SIGNALS
-  TYPE III BARRICADE



SAND MODULE IMPACT ATTENUATOR LAYOUT  
(IF OPTION USED)



PLAN	REVISIONS	DATE
NO.	BY	
NO.	BY	
NO.	BY	
NO.	BY	
NO.	BY	



SEQUENCE OF CONSTRUCTION - STAGE I:

- PLACE 3.0' "BITUMINOUS BASE COURSE, SUPERPAVE, 9 1/2 INCH" ON BOTH ENDS OF THE STRUCTURE AS A PRE-STAGE TO STAGE I.
- PLACE STOP BARS AS SHOWN ON PLANS.
- REMOVE SKIP-DASH AND CONFLICTING SOLID EDGE PAVEMENT MARKINGS BETWEEN STOP BARS.
- PLACE 375 FT TEMPORARY CONCRETE BARRIER AND 2 EACH IMPACT ATTENUATORS, TEMPORARY.
- SEE STANDARD 701321 FOR DETAILS NOT SHOWN ON PLANS.



ILLINOIS DEPARTMENT OF TRANSPORTATION  
STAGE I CONSTRUCTION

FAS ROUTE 1848  
SECTION 28-4BR  
ST. CLAIR COUNTY  
SN 082-0058(E) 0272(P)

REVISIONS	
NAME	DATE

DRAWN BY:

PLOT DATE: 3/22/2006