
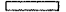



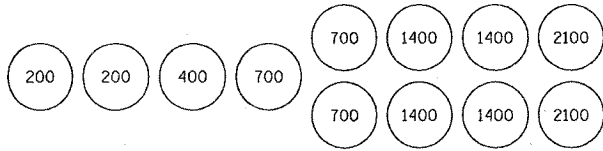


F.A.S. RTE.	SECTION	COUNTY	TOTAL SHEETS	SHEET NO.
1848	28-4BR	ST. CLAIR	101	62
STA. 351+50		TO STA. 357+50		
FED. ROAD DIST. NO.		ILLINOIS FED. AID PROJECT		

LEGEND

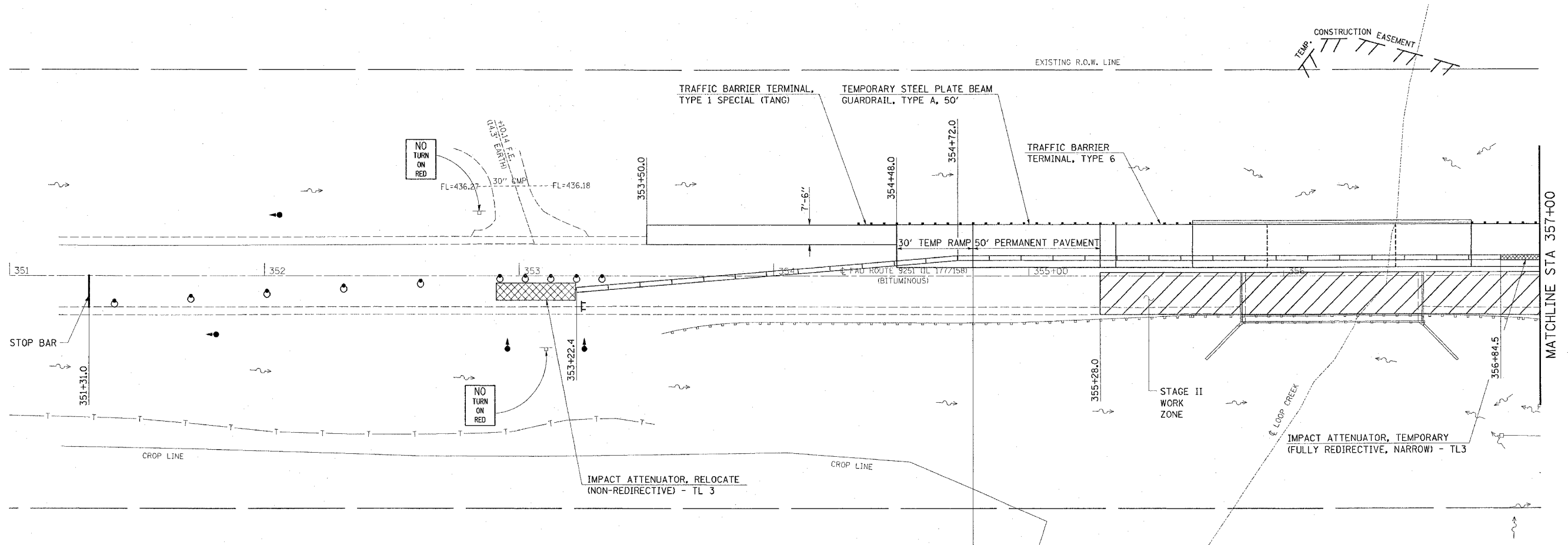
-  IMPACT ATTENUATOR
-  TEMPORARY CONCRETE BARRIER
-  BARRELS OR BARRICADES WITH STEADY BURNING LIGHT
-  TEMPORARY BRIDGE TRAFFIC SIGNALS
-  TYPE III BARRICADE



SAND MODULE IMPACT ATTENUATOR LAYOUT  
(IF OPTION USED)



PLAN	SURVEYED	DATE
NOTE BOOK	ALIGNMENT CHECKED	
NO.	ROAD FILE NAME	



SEQUENCE OF CONSTRUCTION - STAGE II:

PLACE 50 FT PERMANENT PAVEMENT ON BOTH ENDS OF THE STRUCTURE. PERMANENT PAVEMENT SHALL BE BINDER ONLY, LEAVING THE ROADWAY 1.5 INCH LOWER AT THE CONNECTOR. PLACE 5 FT TEMPORARY RAMP AT CONNECTOR. TAPER END OF BINDER TO 9 INCHES THICK AND PLACE 30 FT TEMPORARY RAMP. SEE TEMPORARY RAMP DETAIL.

PLACE "BITUMINOUS BASE COURSE, SUPERPAVE 9 1/2 INCH" ON BOTH ENDS OF THE STRUCTURE. 7.5' FROM STA 353+50.0 LT TO STA 354+48.0 LT AND 8.0' FROM STA 357+89.0 LT TO STA 358+50.0 LT.

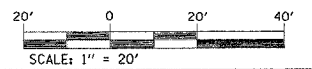
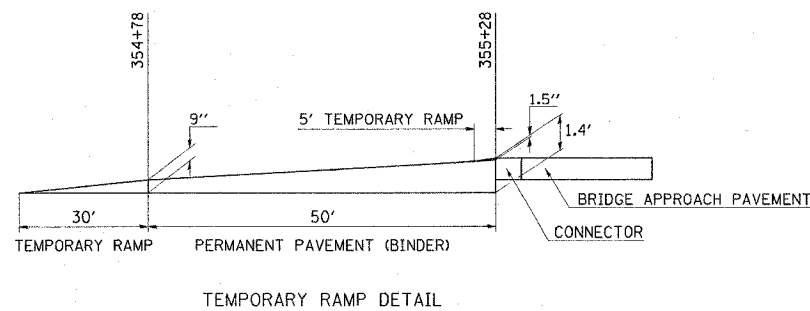
PLACE TRAFFIC BARRIER TERMINAL, TYPE 1 & TYPE 6 AND TEMPORARY GUARDRAIL ON BOTH ENDS OF STRUCTURE.

RELOCATE 362.5 FT OF TEMPORARY CONCRETE BARRIER.

RELOCATE 1 EACH IMPACT ATTENUATORS ON WEST END AND ADD IMPACT ATTENUATOR, TEMPORARY (FULLY REDIRECTIVE, NARROW) - TL3 TO EAST END OF BARRIER TO KEEP FIELD ENTRANCE ACCESSIBLE.

SEE STANDARD 701321 FOR DETAILS NOT SHOWN ON PLANS.

AFTER STRUCTURE IS COMPLETE, REMOVE BARRIER AND PAVE STAGE II IN THE SAME DAY. BARRELS MAY BE USED DURING PAVING IN PLACE OF THE CONCRETE BARRIER.



ILLINOIS DEPARTMENT OF TRANSPORTATION  
STAGE II CONSTRUCTION

FAS ROUTE 1848  
SECTION 28-4BR  
ST. CLAIR COUNTY  
SN 082-0058(E) 0272(P)

REVISIONS	
NAME	DATE

DRAWN BY:

PLOT DATE: 3/22/2006