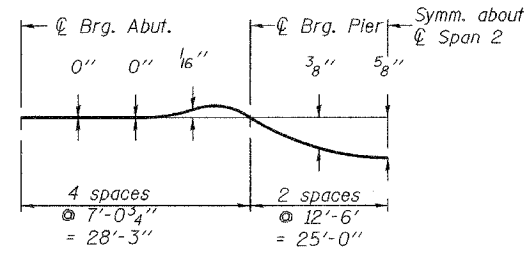


STATE OF ILLINOIS
DEPARTMENT OF TRANSPORTATION

ROUTE NO.	SECTION	COUNTY	TOTAL SHEETS	SHEET NO.
F.A.S. 1848	28-4BR	ST. CLAIR	101	72
FED. ROAD DEPT. NO. 7	BILLINGS	FED. AID PROJECT		

SHEET NO. 5
22 SHEETS

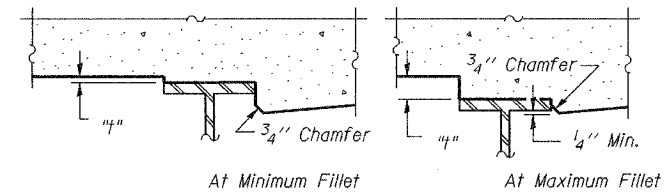
Contract #76394



DEAD LOAD DEFLECTION DIAGRAM

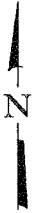
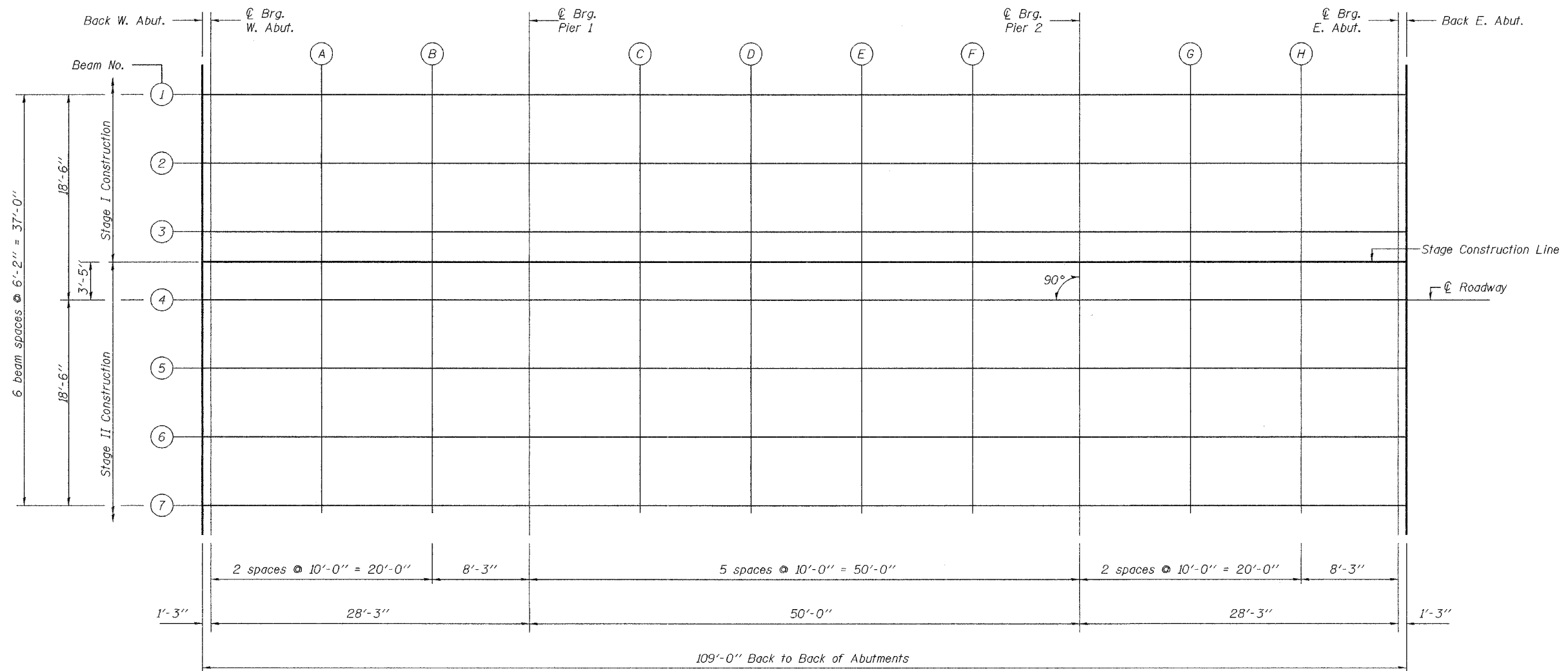
(Includes weight of concrete only.)

Note: The above deflections are not to be used in the field if the engineer is working from the grade elevations adjusted for dead load deflections as shown below.



To determine "t": After all structural steel has been erected, elevations of the top flanges of the beams shall be taken at intervals shown below. These elevations subtracted from the "Theoretical Grade Elevations Adjusted for Dead Load Deflection" shown on sheet 6 of 22, minus slab thickness, equals the fillet heights "t" above top flange of beams.

FILLET HEIGHTS



PLAN

DESIGNED	M.D. Cima
CHECKED	R.J.C.
DRAWN	W.D. Collins
CHECKED	M.D.C. R.J.C.

March 17, 2006
EXAMINED *Thomas J. Domagala*
PASSED *Ralph E. Anderson*
ENGINEER OF BRIDGES AND STRUCTURES

TOP OF SLAB ELEVATIONS
F.A.S. ROUTE 1848 - SECTION 28-4BR
ST. CLAIR COUNTY
STATION 356+18.50
STRUCTURE NO. 082-0272