

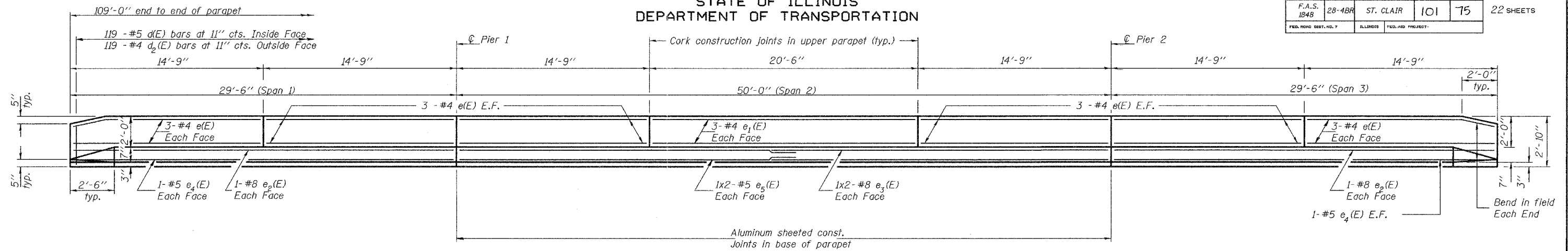
STATE OF ILLINOIS
DEPARTMENT OF TRANSPORTATION

Contract #76394

ROUTE NO.	SECTION	COUNTY	TOTAL SHEETS	SHEET
F.A.S. 1848	28-4BR	ST. CLAIR	101	75
FED. ROAD DIST. NO. 7	ILLINOIS	FED. AID PROJECT		

SHEET NO. 8

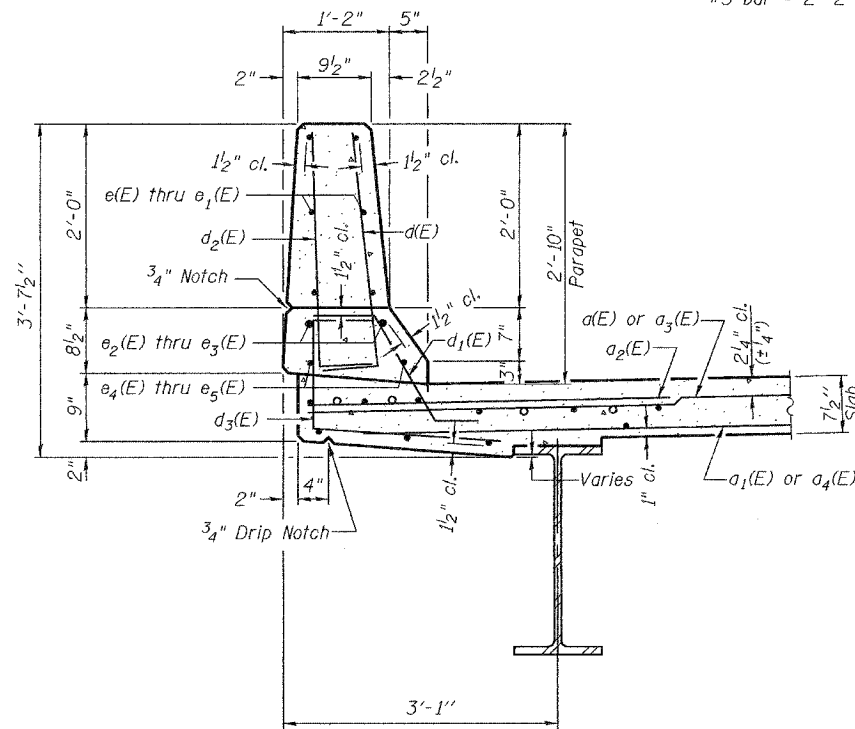
22 SHEETS



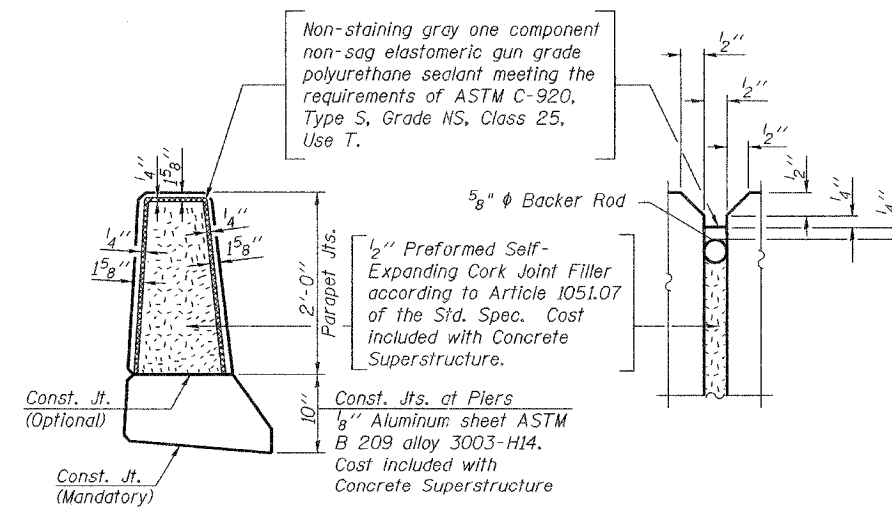
MINIMUM BAR LAPS

#8 bar = 4'-6"
#5 bar = 2'-2"

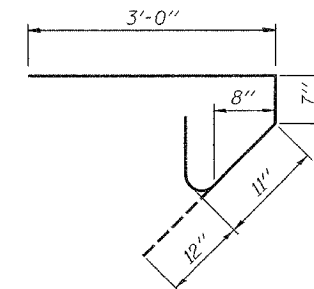
INSIDE ELEVATION OF PARAPET



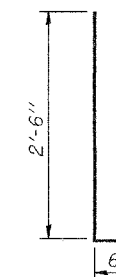
SECTION THRU PARAPET



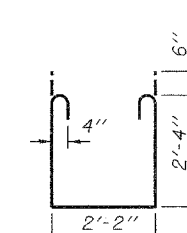
PARAPET JOINT DETAILS



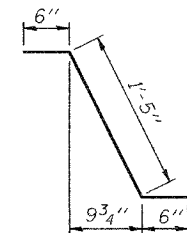
BAR s(E)



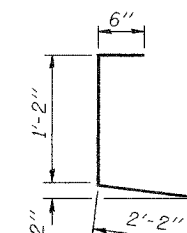
BARS d(E) & d2(E)



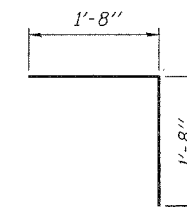
BAR s1(E)



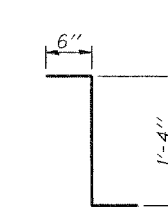
BAR d1(E)



BAR d3(E)



BAR v(E)



BAR d4(E)

**SUPERSTRUCTURE
BILL OF MATERIAL**

Bar	No.	Size	Length	Shape
a(E)	187	#5	24'-6"	—
a1(E)	131	#5	23'-6"	—
a2(E)	374	#6	6'-0"	—
a3(E)	187	#5	17'-8"	—
a4(E)	131	#5	17'-0"	—
b(E)	230	#5	24'-0"	—
b1(E)	86	#6	24'-9"	—
b2(E)	144	#5	29'-5"	—
c(E)	238	#5	3'-0"	┌
d1(E)	226	#5	2'-5"	┌
d2(E)	238	#4	3'-0"	┌
d3(E)	238	#4	3'-10"	┌
d4(E)	12	#5	2'-4"	┌
e(E)	72	#4	14'-5"	—
e1(E)	12	#4	20'-2"	—
e2(E)	8	#8	29'-2"	—
e3(E)	8	#8	27'-1"	—
e4(E)	8	#5	29'-2"	—
e5(E)	8	#5	26'-0"	—
m(E)	4	#6	24'-1"	—
m1(E)	6	#6	24'-8"	—
m2(E)	28	#6	7'-7"	—
m3(E)	10	#6	5'-10"	—
m4(E)	8	#6	2'-10"	—
m5(E)	4	#6	17'-3"	—
m6(E)	6	#6	17'-10"	—
s(E)	96	#5	5'-6"	┌
s1(E)	84	#4	7'-10"	┌
v(E)	84	#5	3'-4"	┌
Reinforcement Bars, Epoxy Coated		Pound	37,800	
Concrete Superstructure		Cu. Yds.	153.0	

Reinforcement bars designated (E) shall be epoxy coated.
Bars indicated thus 1 x 2 - #5 etc. indicates 1 line of bars with 2 lengths per line.

SUPERSTRUCTURE DETAILS
F.A.S. ROUTE 1848 - SECTION 28-4BR
ST. CLAIR COUNTY
STATION 356+18.50
STRUCTURE NO. 082-0272

DESIGNED	M.D. Cima
CHECKED	R.J.C.
DRAWN	W.D. Collins
CHECKED	M.D.C. R.J.C.

March 17, 2006
EXAMINED *Thomas J. Domagalaki*
PASSED *Ralph E. Anderson*
ENGINEER OF BRIDGES AND STRUCTURES