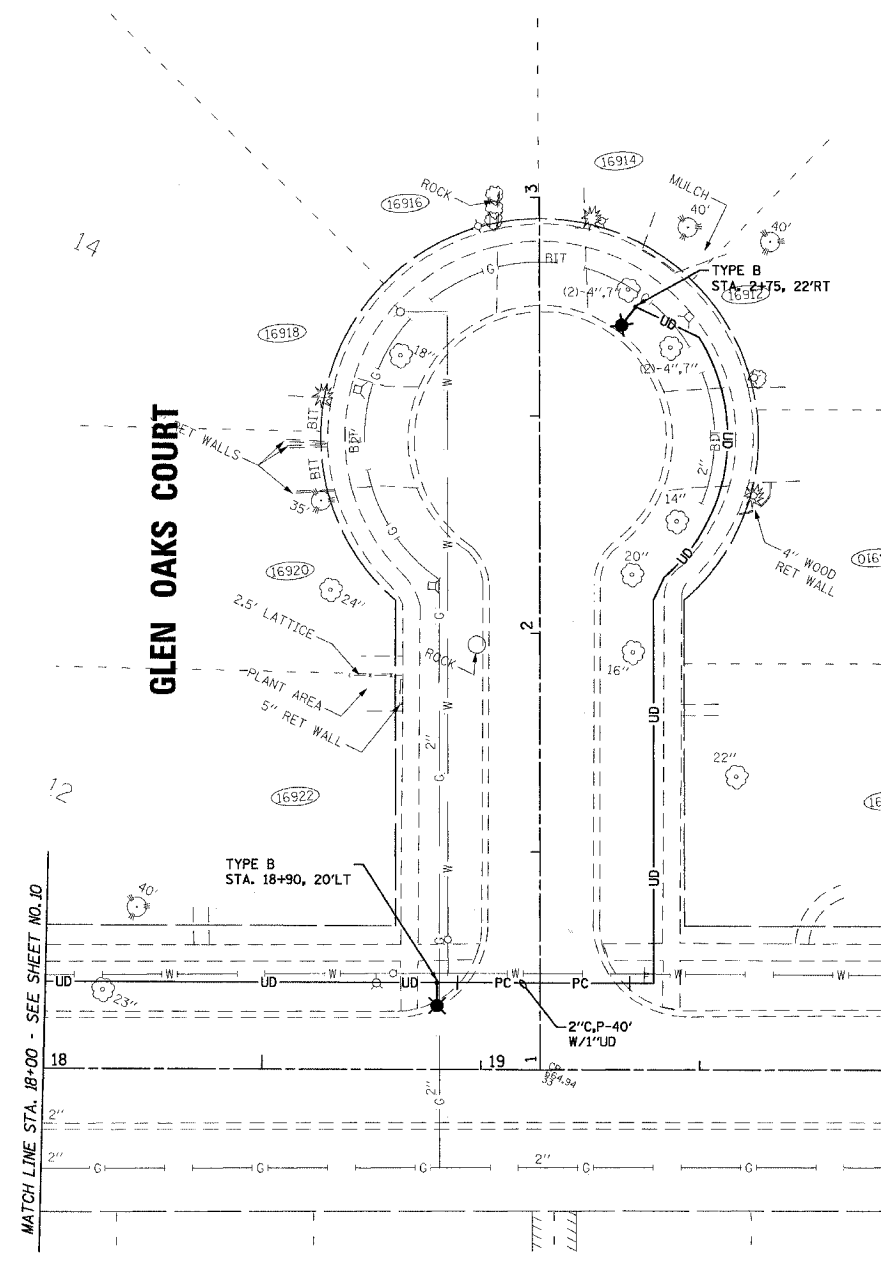


LEGEND

	EXISTING COM ED POWER POLE
	POWER PEDESTAL
	2" CONDUIT, PUSHED 8' LONG WITH 1" UNIT DUCT
	2" CONDUIT, TRENCHED 4' LONG WITH 3"2
	PROPOSED STREET LIGHT - TYPE A 8' ARM TYPE B 12' ARM
	EXISTING STREET LIGHT



CONSULTANTS	REV. NO.	DATE	DESCRIPTION

* REFER TO EQUIPMENT MANUFACTURER'S SHOP DRAWINGS

DRAWING FILE: ...N041178\dgns\41178-pp7.sht

BAXTER & WOODMAN
 Consulting Engineers

Baxter & Woodman
 Crystal Lake, Illinois 815.459.1260
 Burlington, Wisconsin 262.763.7834
 Mokena, Illinois 708.478.2090
 DeKalb, Illinois 815.787.3111
 Graylake, Illinois 847.283.6988
 Rockford, Illinois 815.489.1551

CITY OF COUNTRY CLUB HILLS, ILLINOIS
NOB HILL STREET LIGHTING IMPROVEMENTS

DESIGNED BY JLR	SCALE 1" = 20'
DRAWN BY CJC	PROJECT NO. 041178
CHECKED BY JTB	SHEET NO.
DATE 11/14/05	9 OF 13

12/30/2005 01:25:18 PM I:\CCH\CL\041178\041178-PP7.dwg
 COPYRIGHT © 2005 BY BAXTER & WOODMAN, INC.
 ALL RIGHTS RESERVED. DESIGN, DRAWING, AND CONSTRUCTION OF THIS PROJECT IS THE SOLE PROPERTY OF BAXTER & WOODMAN, INC.