

STATE OF ILLINOIS  
DEPARTMENT OF TRANSPORTATION  
DIVISION OF HIGHWAYS

# PLANS FOR PROPOSED FEDERAL AID PROJECT NOB HILL STREET LIGHTING IMPROVEMENTS

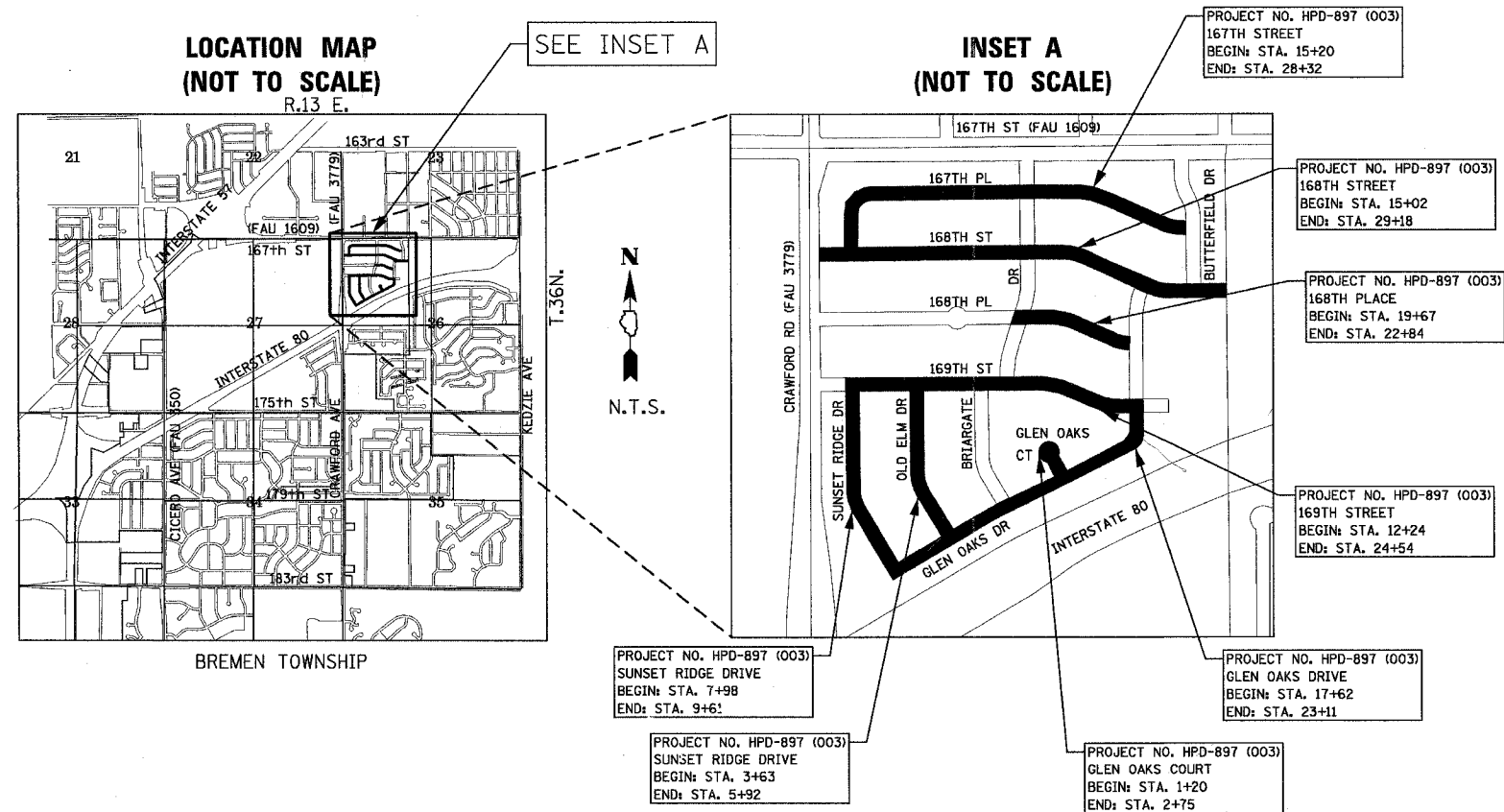
F.A.U. RTE.	SECTION	COUNTY	TOTAL SHEETS	SHEET NO.
	04-00027-01-LT	COOK	13	1
ILLINOIS PROJECT: HPD-897 (003)				
CONTRACT NO. 83834				

FOR INDEX OF SHEETS, SEE SHEET NO. 2

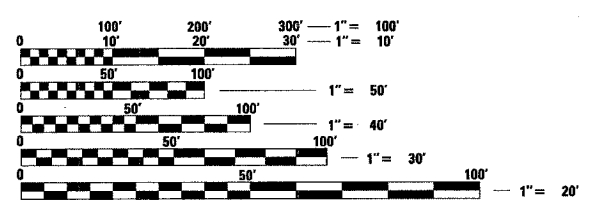
PROJECT IS LOCATED IN THE  
CITY OF COUNTRY CLUB HILLS

**F.A.U. ROUTE: OFF SYSTEM**

**SECTION: 04-00027-01-LT**  
**PROJECT NO.: HPD-897 (003)**  
**PROJECT LIMITS: VARIOUS STREETS**  
**BREMEN TOWNSHIP**  
**COOK COUNTY**  
**JOB NO.: C-91-002-05**



GROSS LENGTH OF IMPROVEMENT = 5421 LIN. FT. 1.03 MILES  
NET LENGTH OF IMPROVEMENT = 5421 LIN. FT. 1.03 MILES



FULL SIZE PLANS HAVE BEEN PREPARED USING STANDARD ENGINEERING SCALES. REDUCED SIZED PLANS WILL NOT CONFORM TO STANDARD SCALES. IN MAKING MEASUREMENTS ON REDUCED PLANS, THE ABOVE SCALES MAY BE USED.

J.U.L.I.E.  
JOINT UTILITY LOCATION INFORMATION FOR EXCAVATION  
1-800-892-0123

**NATHAN J. PECK**  
62-057588  
REGISTERED PROFESSIONAL ENGINEER  
OF ILLINOIS  
11-30-07  
PROJECT MANAGER

**JOHN T. BEAM**  
62-033344  
REGISTERED PROFESSIONAL ENGINEER  
OF ILLINOIS  
12-16-05  
PROJECT ENGINEER

STATE OF ILLINOIS  
DEPARTMENT OF TRANSPORTATION  
DIVISION OF HIGHWAYS

APPROVED: *Dy W. Webb* 01/04 2006  
LOCAL AGENCY REPRESENTATIVE

*[Signature]* 2006  
LOCAL ROADS ENGINEER

Jan 5 2006  
*Diane M. O'Keefe*  
DEPUTY DIRECTOR OF HIGHWAYS, REGION ENGINEER

**PRINTED BY THE AUTHORITY  
OF THE STATE OF ILLINOIS**

**CONTRACT NO. 83834**

Burlington, Wisconsin 262.763.7834  
Crystal Lake, Illinois 815.459.1260  
DeKalb, Illinois 815.787.3111  
Mokena, Illinois 708.560.7070  
Grayslake, Illinois 847.223.5088  
Rockford, Illinois 815.489.1551



**Baxter & Woodman**  
Consulting Engineers

ENGINEER'S PROJECT NO.: 041178 DATE: 11-14-05

I.D.O.T. FEDERAL AID DESIGN ENGINEER: PHIL MARCYN, P.E. (847) 705-4189 SCHLAUBURG, IL

**HIGHWAY STANDARDS**

STANDARD NO.	DESCRIPTION
000001-04	STANDARD SYMBOLS, ABBREVIATIONS AND PATTERNS
701501-03	URBAN LANE CLOSURE, 2L, 2W, UNDIVIDED
701701-04	URBAN LANE CLOSURE, MULTILANE INTERSECTION
701801-03	LANE CLOSURE, MULTILANE, 1W OR 2W CROSSWALK OR SIDEWALK CLOSURE
702001-06	TRAFFIC CONTROL DEVICES

**INDEX OF SHEETS**

SHEET NO.	TITLE
1.	COVER SHEET
2.	HIGHWAY STANDARDS, INDEX OF SHEETS, BENCHMARKS, SUMMARY OF QUANTITIES, AND GENERAL NOTES
3.-4.	168TH STREET
5.-6.	167TH PLACE
7.	168TH PLACE & GLEN OAKS DRIVE
8.	169TH STREET
9.	169TH STREET, GLEN OAKS DRIVE, GLEN OAK'S COURT
10.-11.	BRIARGATE DRIVE & GLEN OAKS DRIVE
12.	SUNSET RIDGE DRIVE & GLEN OAKS DRIVE
13.	LIGHTING DETAILS

**BENCHMARKS**

TBM #4	RR SPIKE SET IN NORTH FACE OF POWER POLE 1ST POLE WEST OF BRIARGATE AND 167TH STREET ELEV. = 668.97
CP #6	CUT CROSS SET IN SIDEWALK 9' SOUTH OF WALK END S.E CORNER OF CRAWORD AVE. & 167TH STREET ELEV. = 659.93

**SUMMARY OF QUANTITIES  
CONSTRUCTION TYPE CODE Y030-1E**

SPECIALTY ITEM	CODE NUMBER	DESCRIPTION	UNIT	QUANTITY
*	25000400	NITROGEN FERTILIZER NUTRIENT	POUND	5
*	25000500	PHOSPHORUS FERTILIZER NUTRIENT	POUND	5
*	25000600	POTASSIUM FERTILIZER NUTRIENT	POUND	5
*	25200110	SODDING, SALT TOLERANT	SQ YD	250
*	25200200	SUPPLEMENTAL WATERING	UNIT	20
	67100100	MOBILIZATION	L SUM	1
	70102620	TRAFFIC CONTROL AND PROTECTION, STANDARD 701501	L SUM	1
	70102635	TRAFFIC CONTROL AND PROTECTION, STANDARD 701701	L SUM	1
	70102640	TRAFFIC CONTROL AND PROTECTION, STANDARD 701801	L SUM	1
	80400100	ELECTRIC SERVICE INSTALLATION	EACH	11
	80400200	ELECTRIC UTILITY SERVICE CONNECTION	L SUM	1
	80700110	GROUND ROD, 3/4" DIA. X 10 FT.	EACH	33
	81000600	CONDUIT IN TRENCH, 2" DIA., GALVANIZED STEEL	FOOT	130
	81018500	CONDUIT PUSHED, 2" DIA., GALVANIZED STEEL	FOOT	140
	81027030	POLYETHYLENE DUCT, BORED AND PULLED 1"	FOOT	5600
	81500200	TRENCH AND BACKFILL FOR ELECTRICAL WORK	FOOT	60
	81702400	ELECTRICAL CABLE IN CONDUIT 600V. (XLP-TYPE USE) 3-1/C NO. 2	FOOT	700
	82103250	LUMINAIRE, SODIUM VAPOR, HORIZONTAL MOUNT, PHOTO-CELL CONTROL, 250 WATT	EACH	22
	83006300	LIGHT POLE, ALUMINUM, 30 FT. M.H., 8 FT. MAST ARM	EACH	14
	83006500	LIGHT POLE, ALUMINUM, 30 FT. M.H., 12 FT. MAST ARM	EACH	8
	83600405	POLE FOUNDATION, STEEL	EACH	22
	83800505	BREAKAWAY DEVICE, COUPLING, WITH ALUMINUM SKIRT	EACH	22
	XX004882	UNIT DUCT, WITH 2-1/C NO. 8 AND 1/C NO. 8 GROUND 600V (XLP-USE) 1" DIA POLYETHYLENE	FOOT	7100
	XX005049	POWER PEDESTALS	EACH	11

**GENERAL NOTES**

- THE CONTRACTOR SHALL PROTECT AND CAREFULLY PRESERVE ALL SECTION OR SUBSECTION MONUMENTS OR PROPERTY OR REFERENCE MARKERS UNTIL THE OWNER, HIS AGENT OR AN AUTHORIZED SURVEYOR HAS WITNESSED OR OTHERWISE REFERENCED THEIR LOCATIONS.
- THE CONTRACTOR SHALL BE RESPONSIBLE FOR CONTACTING THE OWNERS OF ALL EXISTING UTILITIES SO THAT THE UTILITIES AND THEIR APPURTENANCES MAY BE LOCATED AND ADJUSTED OR MOVED, IF NECESSARY, PRIOR TO THE START OF CONSTRUCTION OPERATIONS. THE CONTRACTOR SHALL COOPERATE WITH ALL UTILITY OWNERS AS PROVIDED IN THE STANDARD SPECIFICATIONS. UTILITY LOCATIONS ARE APPROXIMATE. THE CONTRACTOR SHALL USE CAUTION WHERE THERE ARE POTENTIAL CONFLICTS. PRIOR TO THE CONSTRUCTION, THE CONTRACTOR SHALL NOTIFY THE CITY TO LOCATE EXISTING WATER MAIN, WATER SERVICES, SANITARY SEWER, AND SANITARY SEWER SERVICES WHERE THE PROPOSED IMPROVEMENTS MAY CONFLICT.
- ALL AGGREGATE USED ON THIS PROJECT SHALL BE CRUSHED MATERIAL.
- ALL SAW CUTTING SHALL BE INCLUDED IN THE COST OF THE ITEM BEING REMOVED.
- DURING CONSTRUCTION STAGING OPERATIONS, THE CITY OF COUNTRY CLUB HILLS POLICE AND FIRE PROTECTION DISTRICTS SHALL BE NOTIFIED IN WRITING 48 HOURS PRIOR TO STREET CLOSURES. EMERGENCY ACCESS SHALL BE ALLOWED AT ALL TIMES.
- BARRICADES: THE CONTRACTOR SHALL PROVIDE AND INSTALL TWO (2) WEIGHTED SAND BAGS ON EACH TYPE I OR TYPE II BARRICADE USED-ONE (1) WEIGHTED SAND BAG ACROSS EACH BOTTOM RAIL.
- CONTRACTOR SHALL PROVIDE DRIVEWAY ACCESS TO PROPERTIES AT ALL TIMES. WHEN CONSTRUCTION IMPACTS A DRIVEWAY, IMPACTED PROPERTY OWNERS SHALL BE NOTIFIED 48 HOURS PRIOR.
- BEFORE STARTING ANY EXCAVATION, THE CONTRACTOR SHALL CALL "JULIE" AT 800-892-0123 FOR FIELD LOCATIONS OF BURIED ELECTRIC, TELEPHONE AND GAS FACILITIES. (48 HOUR NOTIFICATION IS REQUIRED)
- MAILBOX RELOCATION SHALL BE INCIDENTAL TO CONTRACT.MAIL SERVICE SHALL BE MAINTAINED AT ALL TIMES.
- ALL WORK SHALL CONFORM TO N.E.C. AND ANY APPLICABLE AND/OR ALL SECTIONS OF "STANDARD SPECIFICATIONS FOR ROAD AND BRIDGE CONSTRUCTION" DATED JANUARY 1, 2002 BY ILLINOIS DEPARTMENT OF TRANSPORTATION. ALSO ANY AND ALL APPLICABLE "SPECIAL PROVISION" ISSUED BY I.D.O.T. TO DATE.
- THE CONTRACTOR SHALL PROVIDE WARRANTIES OR GUARANTEES PROVIDING FOR SATISFACTORY IN-SERVICE OPERATION OF THE MECHANICAL AND ELECTRICAL EQUIPMENT AND RELATED COMPONENTS AS PER I.D.O.T. STANDARDS.
- ANY DAMAGE TO PAVEMENT, SIDEWALK, CURB, OR ANY OTHER PORTION OF THE ROADWAY NOT SPECIFICALLY TO BE REMOVED AND REPLACED SHALL BE REPAIRED OR REPLACED BY THE CONTRACTOR AT NO ADDITIONAL COST.
- THE CONTRACTOR SHALL MAKE SPECIAL NOTE OF THE REQUIREMENTS FOR GROUNDING. GROUNDING CONNECTIONS AT THE FOUNDATION SHALL BE EXOTHERMICALLY WELDED, AS SPECIFIED, AND SHALL BE INSPECTED AND APPROVED BY THE ENGINEER PRIOR TO BACKFILLING, AS APPLICABLE.
- THE CONTRACTOR SHALL MAKE SPECIAL NOTE OF THE REQUIREMENT FOR BURIED WARNING TAPE, SPECIFIED AS PART OF "TRENCH AND BACKFILL FOR ELECTRICAL WORK". THE INSTALLATION OF THE TAPE SHALL BE INSPECTED AND APPROVED BY THE ENGINEER PRIOR TO BACKFILLING OR DURING FLOWING OPERATIONS, AS APPLICABLE.
- THE CONTRACTOR SHALL BE RESPONSIBLE FOR THE ESTABLISHMENT OF FINISHED GRADE. THE ENGINEER MAY ASSIST THE CONTRACTOR, AS APPLICABLE, BUT THE RESPONSIBILITY FOR COORDINATING THE FINISHED GRADE ELEVATION WITH THE TOP OF FOUNDATION HEIGHTS AND THE LIGHT SHALL REMAIN WITH THE CONTRACTOR.
- THE CONTRACTOR SHALL MAKE SPECIAL NOTE OF THE REQUIREMENTS FOR WIRE MARKERS AND SHALL TAG ALL WIRE MARKERS AND SHALL TAG ALL WIRING ACCORDINGLY.
- THE CITY OF COUNTRY CLUB HILLS AND ENGINEER SHALL BE NOTIFIED 48 HOURS PRIOR TO COMMENCING EACH CONSTRUCTION PHASE.
- THE CONTRACTOR WILL BE REIMBURSED BY THIS CONTRACT TO THE EXACT AMOUNT OF MONEY AS BILLED BY COM-ED FOR THEIR SERVICES, AND NO EXTRA COMPENSATION SHALL BE PAID TO THE CONTRACTOR FOR ANY INCIDENTAL MATERIALS AND LABOR REQUIRED TO FULFILL THE REQUIREMENTS AS SHOWN ON THE PLANS AND SPECIFIED HEREIN. SEE SECTION 109.05 "STANDARD SPECIFICATIONS FOR ROAD AND BRIDGE CONSTRUCTION".
- ALL ELECTRICAL DEVICES AND MATERIALS SHALL BE U/L LISTED WHERE APPLICABLE.
- PARKWAYS ARE TO BE DISTURBED AS LITTLE AS POSSIBLE. CONTRACTOR SHALL IDENTIFY AREAS REQUIRED TO BE DISTURBED TO THE ENGINEER AND RECEIVE APPROVAL PRIOR TO ANY CONSTRUCTION. ANY AREAS DISTURBED WITHOUT PRIOR APPROVAL FROM THE ENGINEER SHALL BE REPAIRED AND RESTORED AT THE CONTRACTORS EXPENSE.
- ALL WIRING TO BE INSTALLED BY DIRECTIONAL DRILLING METHOD UNLESS OTHERWISE NOTED ON THE PLANS OR DIRECTED BY THE ENGINEER.
- ANY EXISTING TURF AND/OR SOIL DISTURBED IN AREAS APPROVED BY THE ENGINEER THAT CANNOT REMAIN OR BE RE-USED SHALL BE REMOVED AND DISPOSED OF BY THE CONTRACTOR. THE COST SHALL BE INCIDENTAL TO THE BORING, OR TRENCHING PAY ITEM.

11/14/05 12:30/2005 043581PM  
 I:\CCHLC\041178\dgn\41178-gen.shd  
 COPYRIGHT © 2005 BY BAXTER & WOODMAN, INC.  
 LICENSE NO. 184-00023 - EXPIRES 7/30/2007

CONSULTANTS	REV. NO.	DATE	DESCRIPTION
	1	12/14/2005	PER IDOT REVIEW

\* REFER TO EQUIPMENT MANUFACTURER'S SHOP DRAWINGS

DRAWING FILE: ...041178\dgn\41178-gen.shd

**BAXTER & WOODMAN**  
*Crystal Lake, Illinois 815.459.1260*  
*Burlington, Wisconsin 262.783.7834*  
*Mokena, Illinois 708.478.2080*  
*DeKalb, Illinois 815.787.3111*  
*Graylake, Illinois 847.223.5088*  
*Rockford, Illinois 815.499.1551*

**CITY OF COUNTRY CLUB HILLS, ILLINOIS**  
**NOB HILL STREET LIGHTING IMPROVEMENTS**

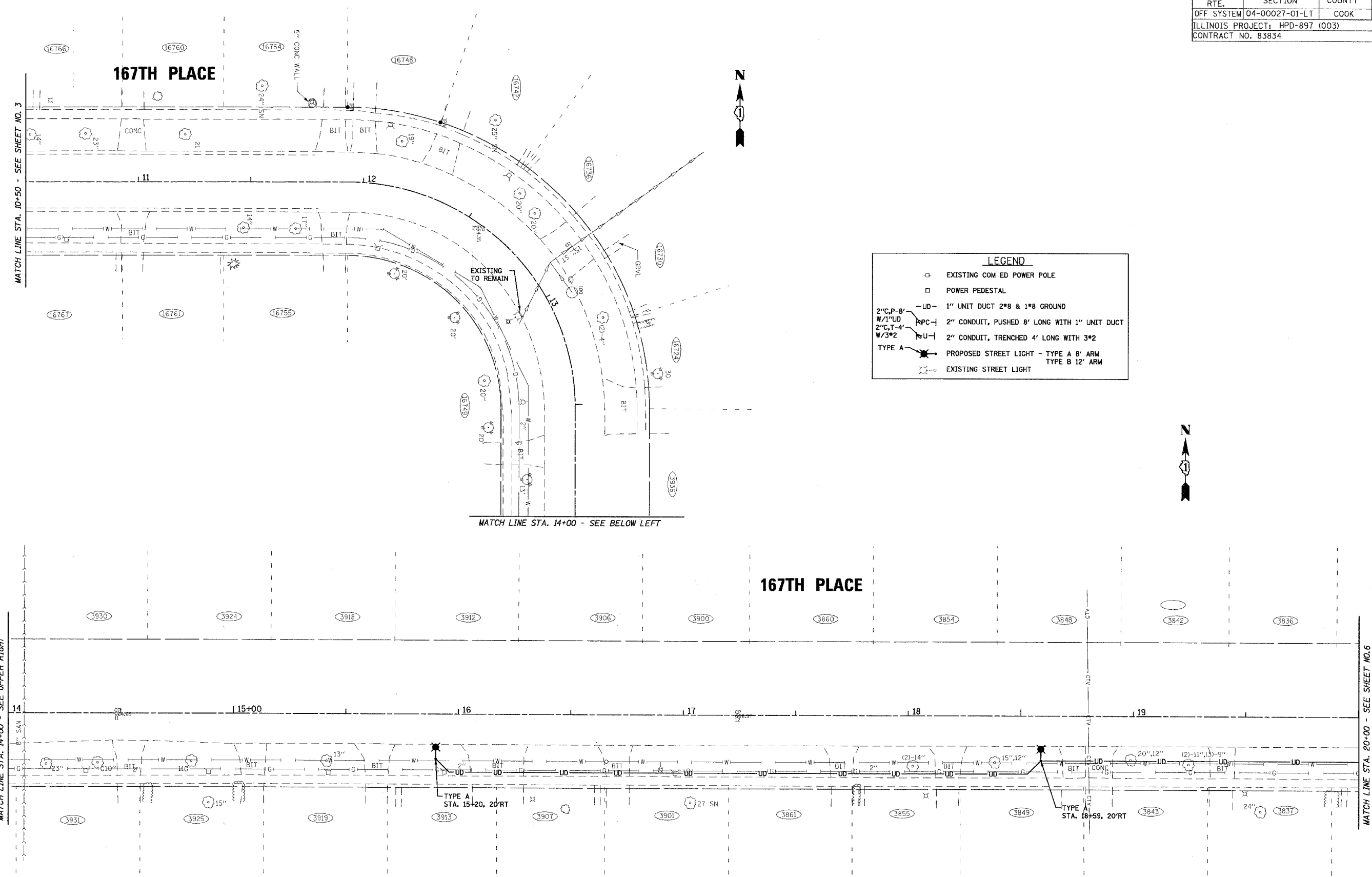
**HIGHWAY STANDARDS, INDEX OF SHEETS,  
BENCHMARKS, SUMMARY OF QUANTITIES,  
AND GENERAL NOTES**

DESIGNED BY	JLR	SCALE	NONE
DRAWN BY	CJC	PROJECT NO.	041178
CHECKED BY	JTB	SHEET NO.	
DATE	11/14/05		

**2 OF 13**







**LEGEND**

- EXISTING COM ED POWER POLE
- POWER PEDESTAL
- UD— 1" UNIT DUCT 2"Ø & 1"Ø GROUND
- RPC— 2" CONDUIT, PUSHED 8' LONG WITH 1" UNIT DUCT
- TU— 2" CONDUIT, TRENCHED 4' LONG WITH 3"Ø
- TYPE A PROPOSED STREET LIGHT - TYPE A 8' ARM  
TYPE B 12' ARM
- EXISTING STREET LIGHT

12/30/2005 09:35:44 PM I:\CCHILL\041178\041178-PP3.SHT  
 41850/C 2005 BY BAXTER & WOODMAN, INC.  
 LICENSE NO. 184-00281 EXPIRES 4/30/2007

CONSULTANTS	REV. NO.	DATE	DESCRIPTION
* REFER TO EQUIPMENT MANUFACTURER'S SHOP DRAWINGS			

DRAWING FILE: ...\\041178\dgn\41178-pp3.sht

**BAXTER & WOODMAN**  
 Consulting Engineers

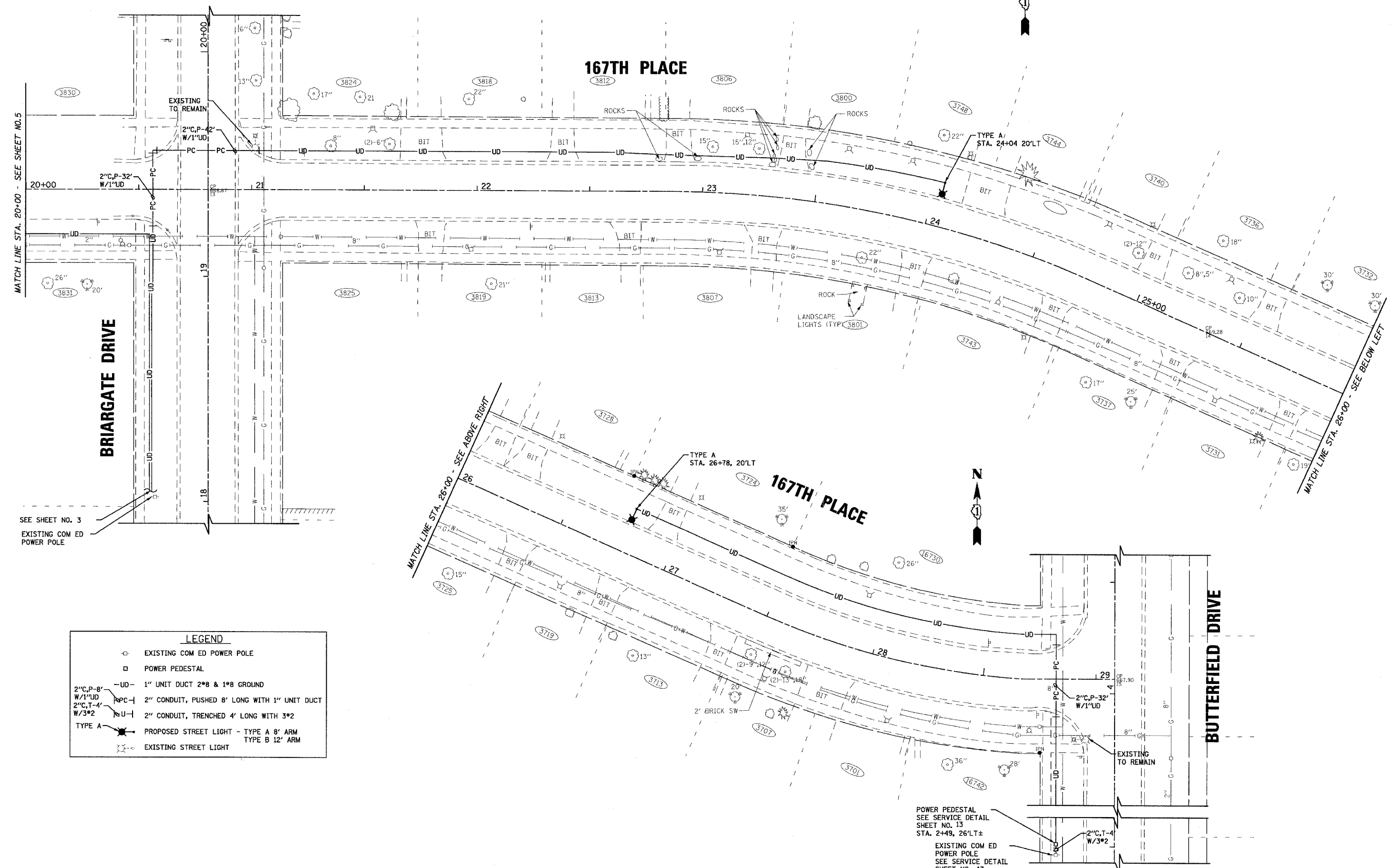
*Baxter & Woodman*  
 Crystal Lake, Illinois 815.469.1260  
 Burlington, Wisconsin 262.763.7894  
 Mokena, Illinois 708.478.9090  
 DeKalb, Illinois 815.787.3111  
 Graylake, Illinois 847.928.5088  
 Rockford, Illinois 815.489.1551

**CITY OF COUNTRY CLUB HILLS, ILLINOIS**

**NOB HILL STREET LIGHTING IMPROVEMENTS**

**167TH PLACE**  
**STA. 23+50 TO STA 30+00**

DESIGNED BY JLR	SCALE 1" = 20'
DRAWN BY CJC	PROJECT NO. 041178
CHECKED BY JTB	SHEET NO.
DATE 11/14/05	<b>5 OF 13</b>



MATCH LINE STA. 20+00 - SEE SHEET NO. 5

**BRIARGATE DRIVE**

SEE SHEET NO. 3  
EXISTING COM ED  
POWER POLE

MATCH LINE STA. 26+00 - SEE ABOVE RIGHT

**167TH PLACE**

MATCH LINE STA. 28+00 - SEE BELOW LEFT

**BUTTERFIELD DRIVE**

LEGEND	
⊕	EXISTING COM ED POWER POLE
□	POWER PEDESTAL
—UD	1" UNIT DUCT 2"Ø & 1"Ø GROUND
2" C, P-8" W/1" UD	2" CONDUIT, PUSHED 8' LONG WITH 1" UNIT DUCT
2" C, T-4" W/3"Ø	2" CONDUIT, TRENCHED 4' LONG WITH 3"Ø
TYPE A	PROPOSED STREET LIGHT - TYPE A 8' ARM
TYPE B	PROPOSED STREET LIGHT - TYPE B 12' ARM
⊙	EXISTING STREET LIGHT

POWER PEDESTAL  
SEE SERVICE DETAIL  
SHEET NO. 13  
STA. 2+49, 26'LT±

EXISTING COM ED  
POWER POLE  
SEE SERVICE DETAIL  
SHEET NO. 13

4/8/05 12:30/2005 04:56:58 PM I:\CCHILL\CHTR\WOODMAN\1178-pp4.dwt  
 COPYRIGHT © 2005 BY BAXTER & WOODMAN, INC.  
 LICENSE NO. 184-00027-01-LT EXPIRES 4/30/2007

CONSULTANTS	REV. NO.	DATE	DESCRIPTION
* REFER TO EQUIPMENT MANUFACTURER'S SHOP DRAWINGS			
DRAWING FILE: ... \041178\dgn\41178-pp4.dwt			



**Baxter & Woodman**  
 Crystal Lake, Illinois 815.489.1260  
 Burlington, Wisconsin 262.769.7834  
 Mahomet, Illinois 708.478.8060  
 DeKalb, Illinois 815.787.3111  
 Graylake, Illinois 847.323.5088  
 Rockford, Illinois 815.489.1551

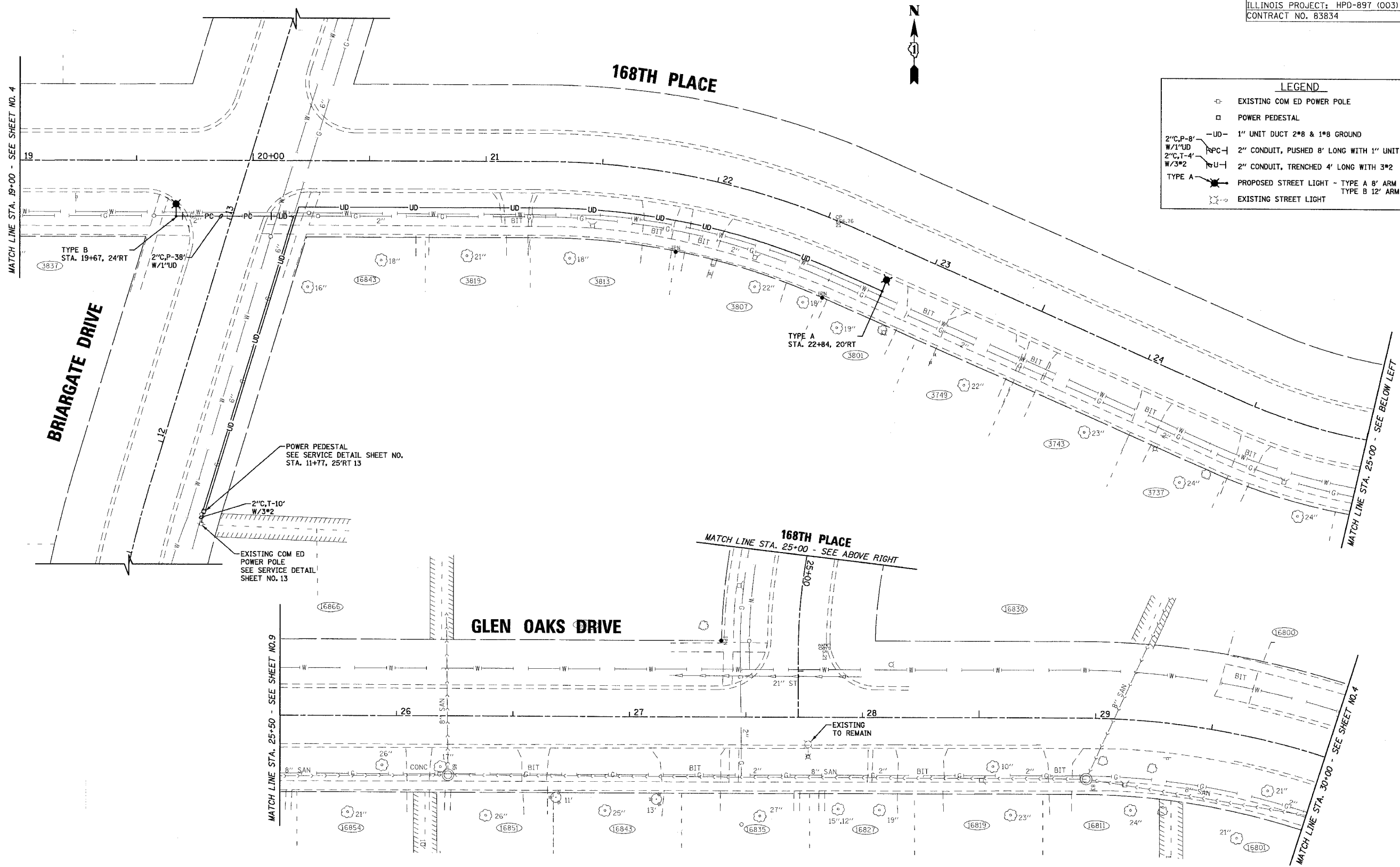
**CITY OF COUNTRY CLUB HILLS, ILLINOIS**  
**NOB HILL STREET LIGHTING IMPROVEMENTS**

**167TH PLACE**  
**STA. 20+00 TO STA 29+08**

DESIGNED BY	JLR	SCALE	1" = 20'
DRAWN BY	CJC	PROJECT NO.	041178
CHECKED BY	JTB	SHEET NO.	6 OF 13
DATE	11/14/05		



LEGEND	
⊠	EXISTING COM ED POWER POLE
□	POWER PEDESTAL
—UD—	1" UNIT DUCT 2"Ø & 1"Ø GROUND
2" C.P.-8' W/1" UD	2" CONDUIT, PUSHED 8' LONG WITH 1" UNIT DUCT
2" C.T.-4' W/3"Ø	2" CONDUIT, TRENCHED 4' LONG WITH 3"Ø
TYPE A	PROPOSED STREET LIGHT - TYPE A 8' ARM TYPE B 12' ARM
⊙	EXISTING STREET LIGHT



12/30/2005 04:56:46 PM I:\CCKL\041178\041178-pp5.sht  
 COPYRIGHT © 2005 BY BAXTER & WOODMAN, INC.  
 STATE OF ILLINOIS - PROFESSIONAL DESIGN FIRM  
 LICENSE NO. 041-00027-01-LT-0001-EXPRES 4/20/2007

CONSULTANTS	REV. NO.	DATE	DESCRIPTION
* REFER TO EQUIPMENT MANUFACTURER'S SHOP DRAWINGS			

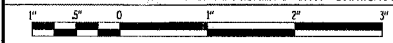
**BAXTER & WOODMAN**  
 Consulting Engineers

**Baxter & Woodman**  
 Crystal Lake, Illinois 815.459.1260  
 Burlington, Wisconsin 262.763.7834  
 Mokena, Illinois 708.478.2090  
 DeKalb, Illinois 815.787.3111  
 Graylake, Illinois 847.223.5088  
 Rockford, Illinois 815.488.1551

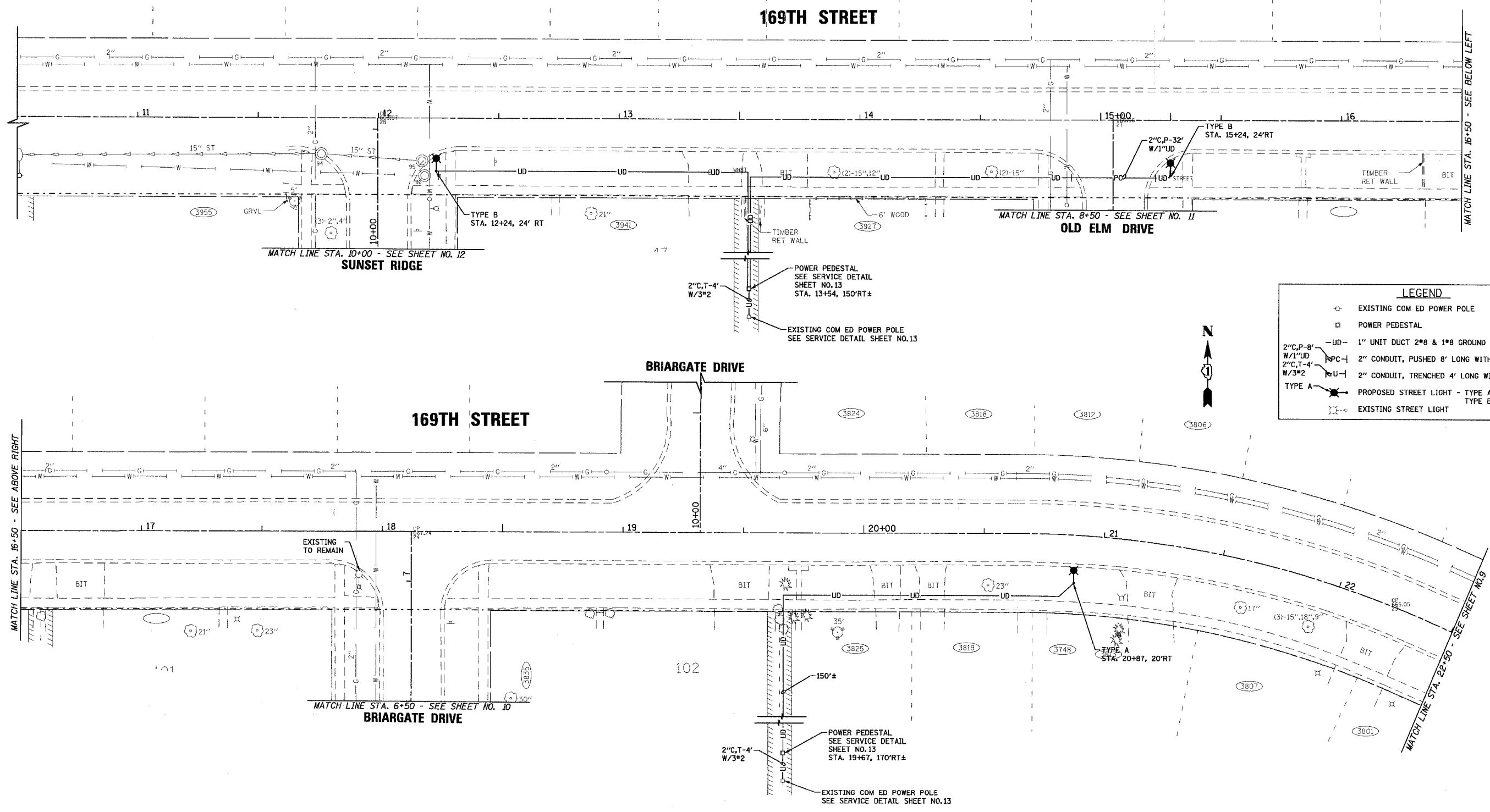
**CITY OF COUNTRY CLUB HILLS, ILLINOIS**  
**NOB HILL STREET LIGHTING IMPROVEMENTS**

**168TH PLACE**  
**STA. 19+00 TO STA 25+00**  
**GLEN OAKS DRIVE**  
**STA. 25+50 TO STA 30+00**

DESIGNED BY	JLR	SCALE	1" = 20'
DRAWN BY	CJC	PROJECT NO.	041178
CHECKED BY	JTB	SHEET NO.	7 OF 13
DATE	11/14/05		



DRAWING FILE: ...\\041178\041178-pp5.sht



**LEGEND**

- EXISTING COM ED POWER POLE
- POWER PEDESTAL
- UD— 1" UNIT DUCT 2" & 1" & 8" GROUND
- P/C— 2" CONDUIT, PUSHED 8' LONG WITH 1" UNIT DUCT
- U— 2" CONDUIT, TRENCHED 4' LONG WITH 3" & 2"
- TYPE A
- ★ PROPOSED STREET LIGHT - TYPE A 8' ARM  
TYPE B 12' ARM
- EXISTING STREET LIGHT

12/20/2005 04:55:17 PM I:\CADD\1041178\1041178-pp6.sht  
 COPYRIGHT © 2005 BY BAXTER & WOODMAN, INC.  
 ALL RIGHTS RESERVED. PROFESSIONAL DESIGN FIRM  
 LICENSE NO. 025-000000 BAXTER & WOODMAN, INC.

CONSULTANTS	REV. NO.	DATE	DESCRIPTION
* REFER TO EQUIPMENT MANUFACTURER'S SHOP DRAWINGS			
DRAWING FILE: ...1041178\1041178-pp6.sht			

**BAXTER & WOODMAN**  
 Consulting Engineers

**Baxter & Woodman**  
 Crystal Lake, Illinois 815.469.1980  
 Burlington, Wisconsin 262.763.7894  
 Mokena, Illinois 708.478.2090  
 DeKalb, Illinois 815.787.3111  
 Graylake, Illinois 847.283.5088  
 Rockford, Illinois 815.489.1551

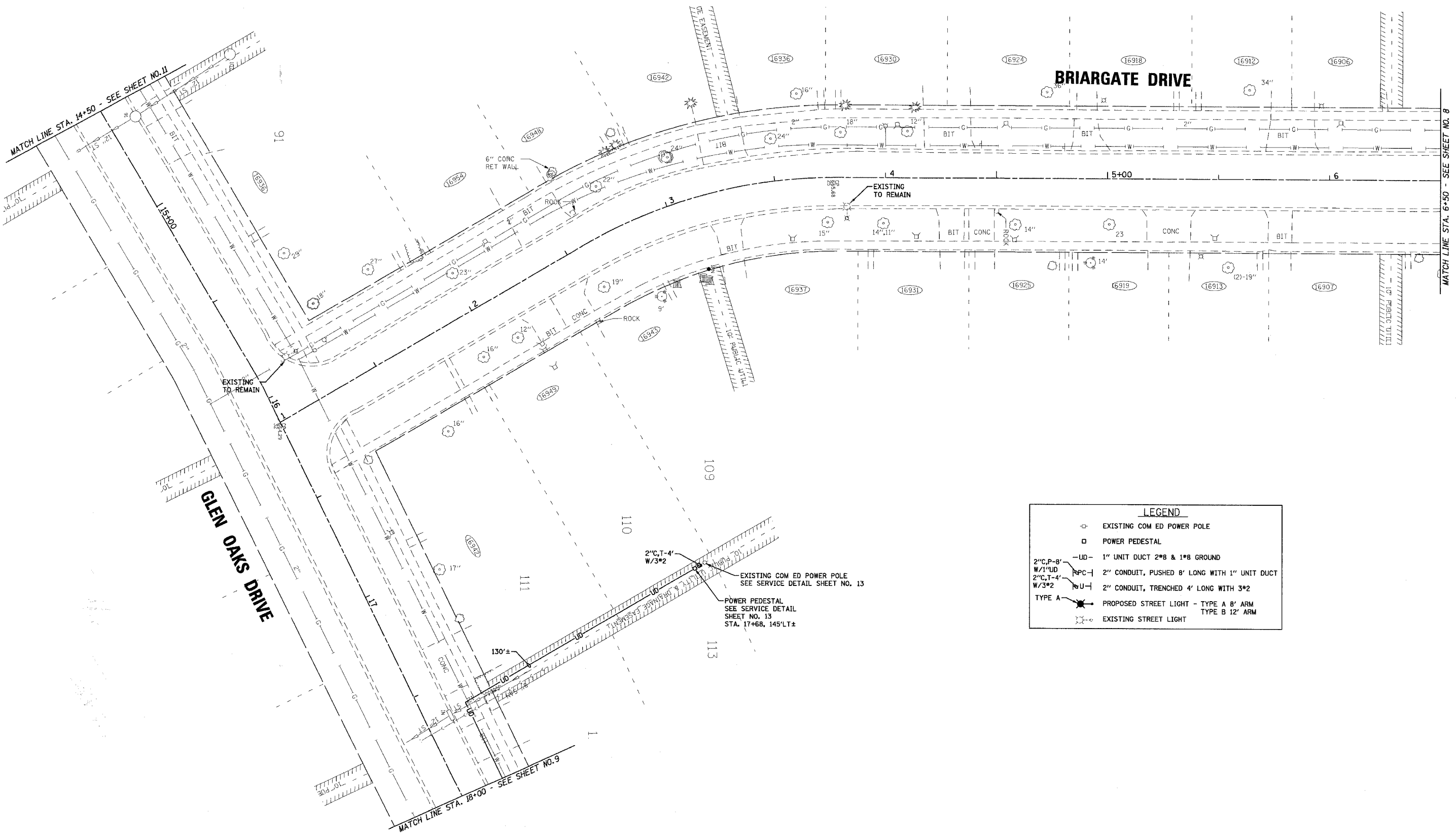
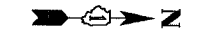
**CITY OF COUNTRY CLUB HILLS, ILLINOIS**  
**NOB HILL STREET LIGHTING IMPROVEMENTS**

**169TH STREET**  
**STA. 10+50 TO STA 22+50**

DESIGNED BY	SCALE
JLR	1" = 20'
DRAWN BY	PROJECT NO.
CJC	041178
CHECKED BY	SHEET NO.
JTB	8 OF 13
DATE	
11/14/05	







LEGEND	
	EXISTING COM ED POWER POLE
	POWER PEDESTAL
	1" UNIT DUCT 2"8 & 1"8 GROUND
	2" CONDUIT, PUSHED 8' LONG WITH 1" UNIT DUCT
	2" CONDUIT, TRENCHED 4' LONG WITH 3"2
	PROPOSED STREET LIGHT - TYPE A 8' ARM
	TYPE B 12' ARM
	EXISTING STREET LIGHT

11/23/2005 04:56:59 PM I:\CCH\CL\041178\dgn\1178-pp8.sht  
 COPYRIGHT © 2005 BY BAXTER & WOODMAN, INC.  
 ALL RIGHTS RESERVED. PROFESSIONAL DESIGN FIRM  
 STATE NO. 041-000001 LICENSE NO. 041-000001

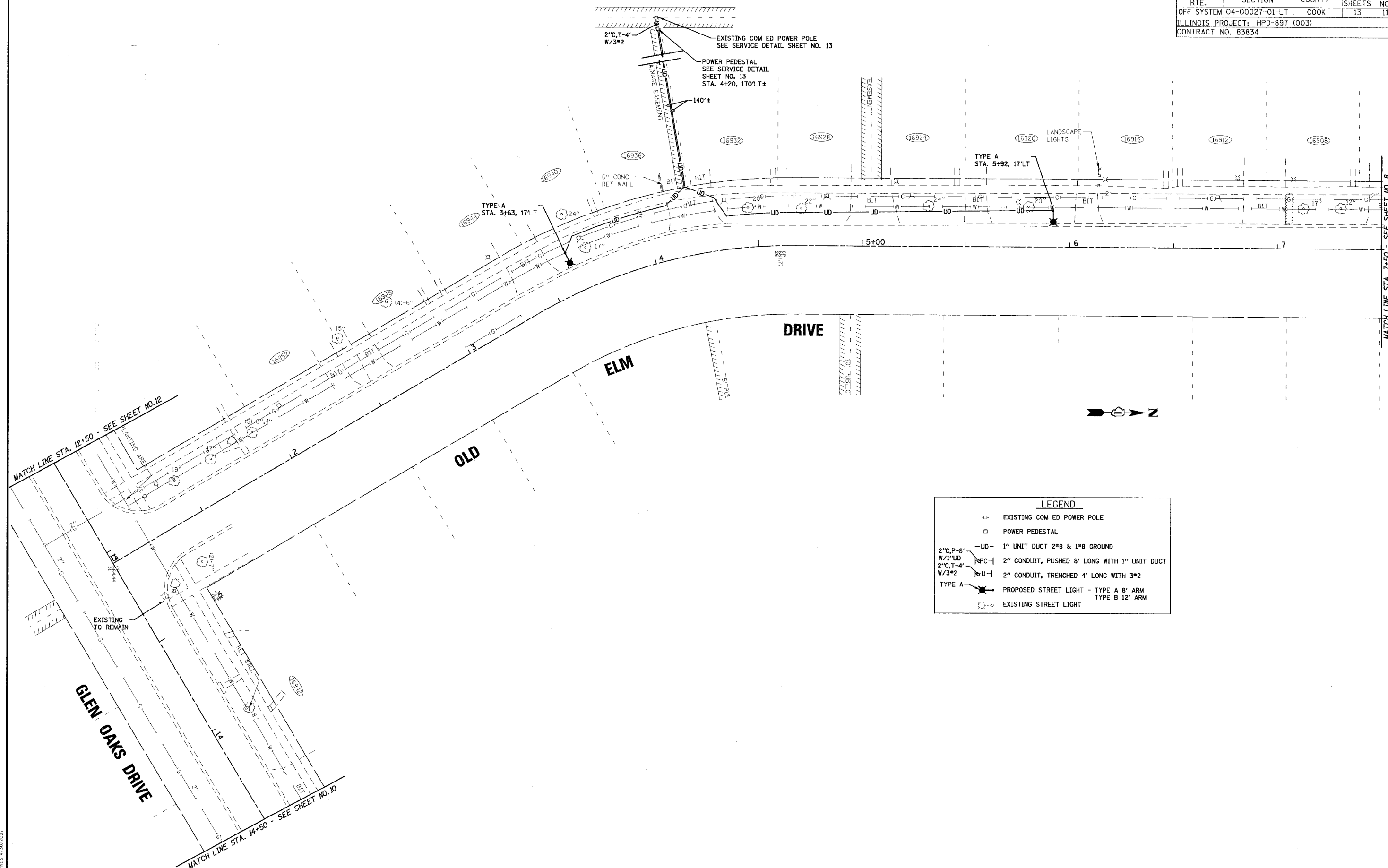
CONSULTANTS	REV. NO.	DATE	DESCRIPTION
* REFER TO EQUIPMENT MANUFACTURER'S SHOP DRAWINGS			
DRAWING FILE: ...\\041178\dgn\1178-pp8.sht			

**BAXTER & WOODMAN**  
 Consulting Engineers  
 Crystal Lake, Illinois 815.459.1280  
 Burlington, Wisconsin 262.763.7834  
 Mukwonago, Illinois 708.478.9090  
 DeKalb, Illinois 815.787.3111  
 Graylake, Illinois 847.223.6088  
 Rockford, Illinois 815.489.1551

**CITY OF COUNTRY CLUB HILLS, ILLINOIS**  
**NOB HILL STREET LIGHTING IMPROVEMENTS**

**BRIARGATE DRIVE**  
**STA. 1+00 TO STA. 6+50**  
**GLEN OAKS DRIVE**  
**STA. 14+50 TO STA. 18+00**

DESIGNED BY	JLR	SCALE	1" = 20'
DRAWN BY	CJC	PROJECT NO.	041178
CHECKED BY	JTB	SHEET NO.	
DATE	11/14/05		



LEGEND	
	EXISTING COM ED POWER POLE
	POWER PEDESTAL
	1" UNIT DUCT 2"8 & 1"8 GROUND
	2" CONDUIT, PUSHED 8' LONG WITH 1" UNIT DUCT
	2" CONDUIT, TRENCHED 4' LONG WITH 3"2
	PROPOSED STREET LIGHT - TYPE A 8' ARM
	TYPE B 12' ARM
	EXISTING STREET LIGHT

12/30/2005 01:55:20 PM I:\GCHL\041178\041178-PP9.SHT  
 COPYRIGHT © 2005 BY BAXTER & WOODMAN, INC.  
 LICENSE NO. 184-00121 - EXPIRES 4/30/2007

CONSULTANTS	REV. NO.	DATE	DESCRIPTION
* REFER TO EQUIPMENT MANUFACTURER'S SHOP DRAWINGS			
DRAWING FILE: ...\\041178\dgn\41178-pp9.sht			

**BAXTER & WOODMAN**  
 Consulting Engineers

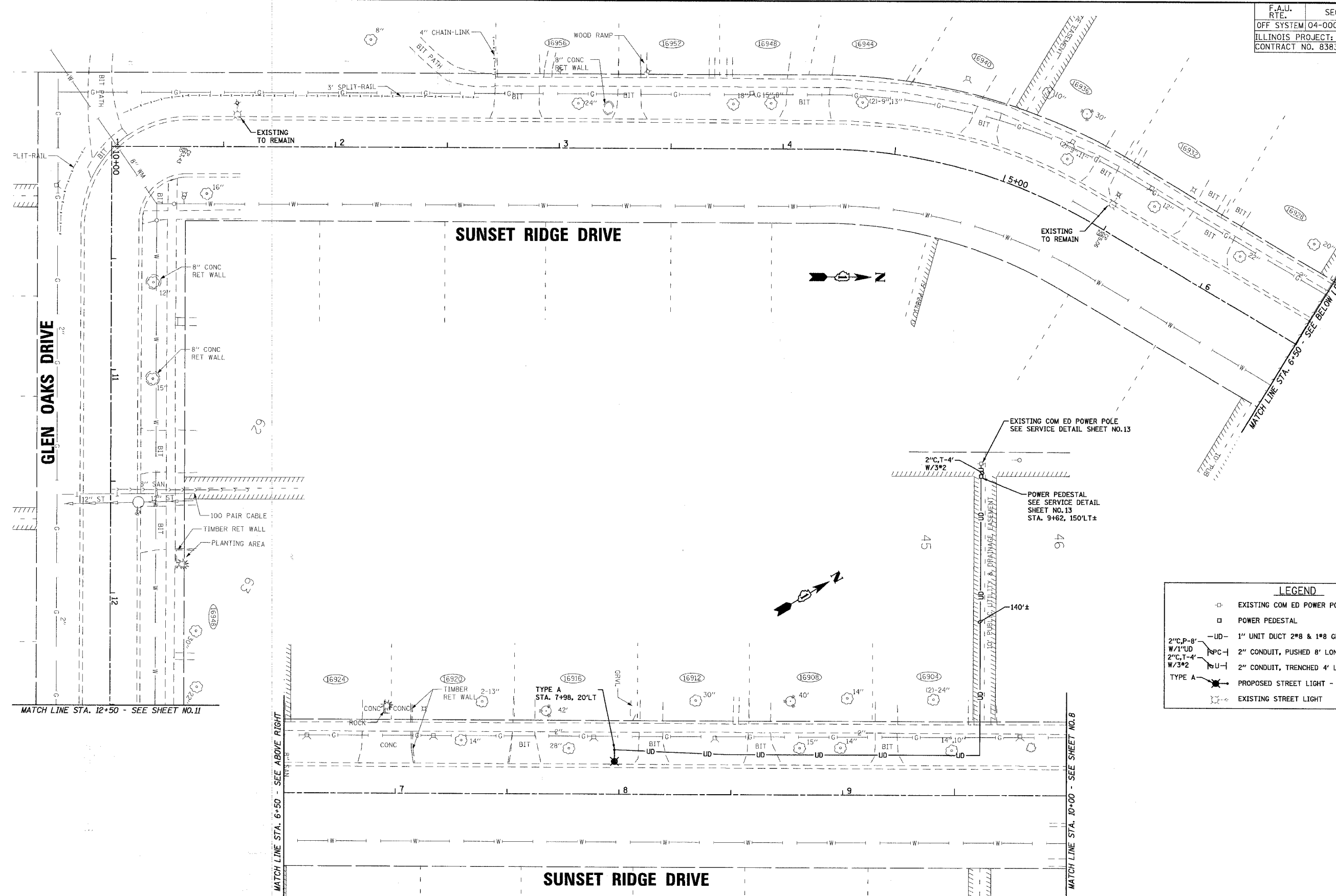
*Baxter & Woodman*  
 Crystal Lake, Illinois 815.489.1260  
 Burlington, Wisconsin 262.783.7824  
 Mahana, Illinois 708.478.8060  
 DeKalb, Illinois 815.787.3111  
 Graylake, Illinois 847.823.8088  
 Rockford, Illinois 815.489.1551

**CITY OF COUNTRY CLUB HILLS, ILLINOIS**

**NOB HILL STREET LIGHTING IMPROVEMENTS**

**OLD ELM DRIVE**  
**STA. 1+00 TO STA. 7+50**  
**GLEN OAKS DRIVE**  
**STA. 12+50 TO STA. 14+50**

DESIGNED BY	JLR	SCALE	1" = 20'
DRAWN BY	CJC	PROJECT NO.	041178
CHECKED BY	JTB	SHEET NO.	11 OF 13
DATE	11/14/05		



**LEGEND**

- EXISTING COM ED POWER POLE
- POWER PEDESTAL
- UD— 1" UNIT DUCT 2"Ø & 1"Ø GROUND
- 2"Ø, P-8" W/1"UD RPC— 2" CONDUIT, PUSHED 8' LONG WITH 1" UNIT DUCT
- 2"Ø, T-4" W/3"2 U— 2" CONDUIT, TRENCHED 4' LONG WITH 3"Ø
- TYPE A — PROPOSED STREET LIGHT - TYPE A 8' ARM TYPE B 12' ARM
- ⊙ EXISTING STREET LIGHT

12/10/2005 04:59 PM I:\CCH\10478\0478.dgn 4478-pp10.dwg  
 COPYRIGHT © 2005 BY BAXTER & WOODMAN, INC.  
 STATE OF ILLINOIS - PROFESSIONAL DESIGN FIRM  
 LICENSE NO. 041178 - EXPIRES 4/30/2007

CONSULTANTS	REV. NO.	DATE	DESCRIPTION
* REFER TO EQUIPMENT MANUFACTURER'S SHOP DRAWINGS			
DRAWING FILE: ...41178\dgn\41178-pp10.dwg			

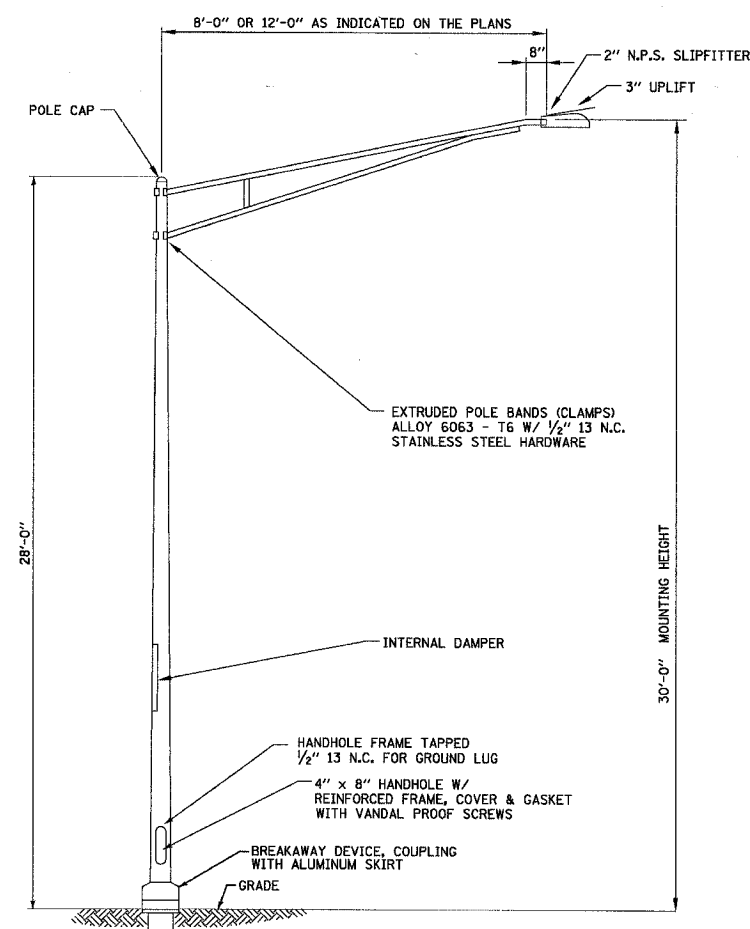
**BAXTER & WOODMAN**  
 Consulting Engineers

Crystal Lake, Illinois 815.459.1260  
 Burlington, Wisconsin 262.763.7834  
 Mokena, Illinois 708.478.2090  
 DeKalb, Illinois 815.787.3111  
 Graylake, Illinois 847.283.5688  
 Rockford, Illinois 815.488.1551

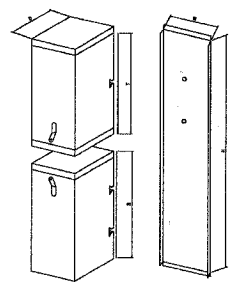
**CITY OF COUNTRY CLUB HILLS, ILLINOIS**  
**NOB HILL STREET LIGHTING IMPROVEMENTS**

**SUNSET RIDGE DRIVE**  
**STA. 1+00 TO STA. 10+00**  
**GLEN OAKS DRIVE**  
**STA. 10+00 TO STA. 12+50**

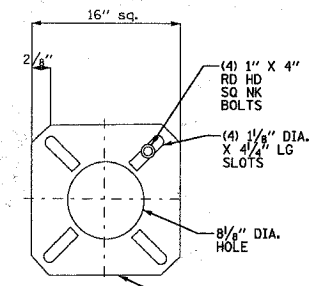
DESIGNED BY	JLR	SCALE	1" = 20'
DRAWN BY	CJC	PROJECT NO.	041178
CHECKED BY	JTB	SHEET NO.	12 OF 13
DATE	11/14/05		



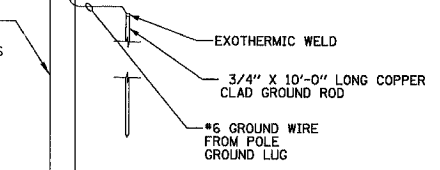
- FEATURES :
- 14 GAUGE 235 MILL GALVANIZED STEEL WITH 12 GAUGE HASP
  - POWDER COATED PAINT DARK GREEN
  - ROUNDED FRONT
  - RECESSED PENTLOCK FEATURE



CAT*	D	W	T	B	H	COMMENTS
202-3 OOME	7-1/2	7-1/2	20-5/8	20-5/8	38	STANDARD UNIT
202-3C	7-1/2	7-1/2	20-5/8	20-5/8	38	SWINGING KNOCKOUT
202-3CPHB	7-1/2	7-1/2	21	26	46	PENTLOCK + SWINGING KNOCKOUT
208-44R	10-1/2	10-1/2	21-1/8	24	44	
206-44RCHP	8-1/2	10-1/2	21-1/8	24	44	PENTLOCK + SWINGING KNOCKOUT
204-38	10-1/2	10-1/2	21-1/8	18	38	STANDARD 8 1/2 X 10 1/2
204-38C	10-1/2	10-1/2	21-1/8	18	38	SWINGING KNOCKOUT
204-38CPH	10-1/2	10-1/2	21-1/8	18	38	PENTLOCK + SWINGING KNOCKOUT

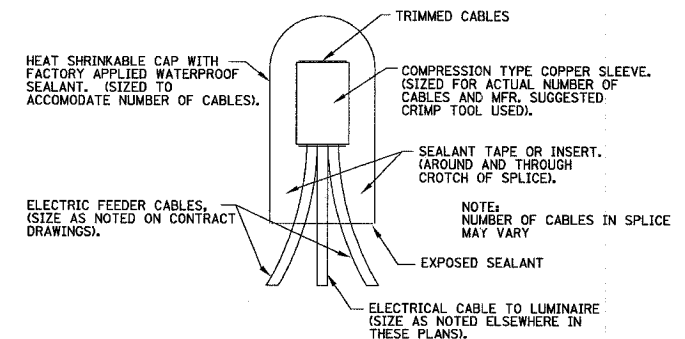


METAL ANCHOR BASE: GALVANIZED 8-5/8" x 84" SCH. 20 STL. PIPE W/ (2) 3" SAW TEETH ON BOTTOM AND 1" TH. X 16" SQ. MOUNTING PLATE WELDED TO TOP. PROVIDE TWO WIRING ACCESS SLOTS (2-1/2" X 12") @ 180 DEGREES THRU PIPE SECTION 12" BELOW TOP OF BASE. MOUNTING PLATE BOLT CIRCLE DIA. OF 10-1/2" - 15" W/ (4) 1-1/8" WIDE SLOTS. FURN. W/ (4) 1" X 4" HEX HEAD GRADE 5 ANCHOR BOLTS, (4) 1" GRADE 5 NUTS, & (8) 1" WASHERS. DESIGN TO AASHTO-1994, 80 MPH WIND W/ 1.3 GUST AND AASHTO-2000, 90 MPH WIND W/ 1.14 GUST.

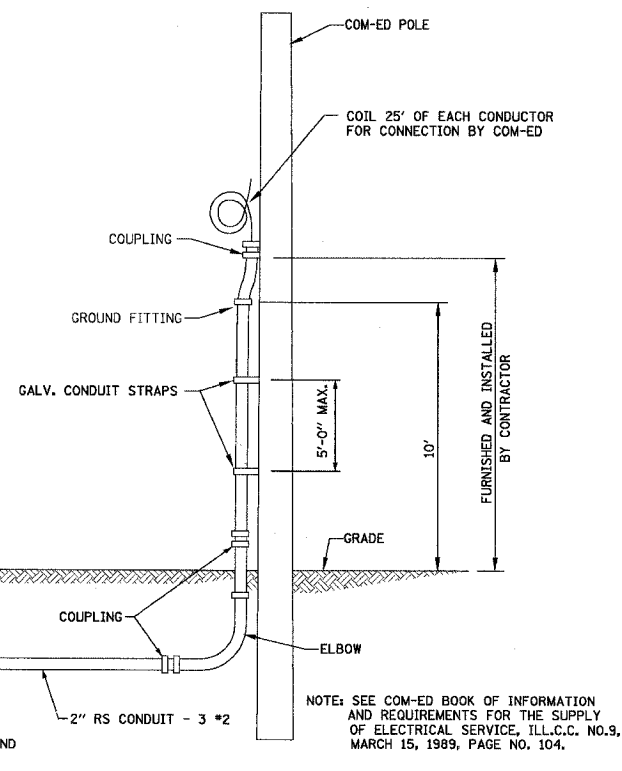


NOTE: SETBACK BEHIND BARRIER CURB MINIMUM 6 FOOT, VARIABLE - SEE PLANS

**LIGHT POLE - TYPE A & B**  
NO SCALE

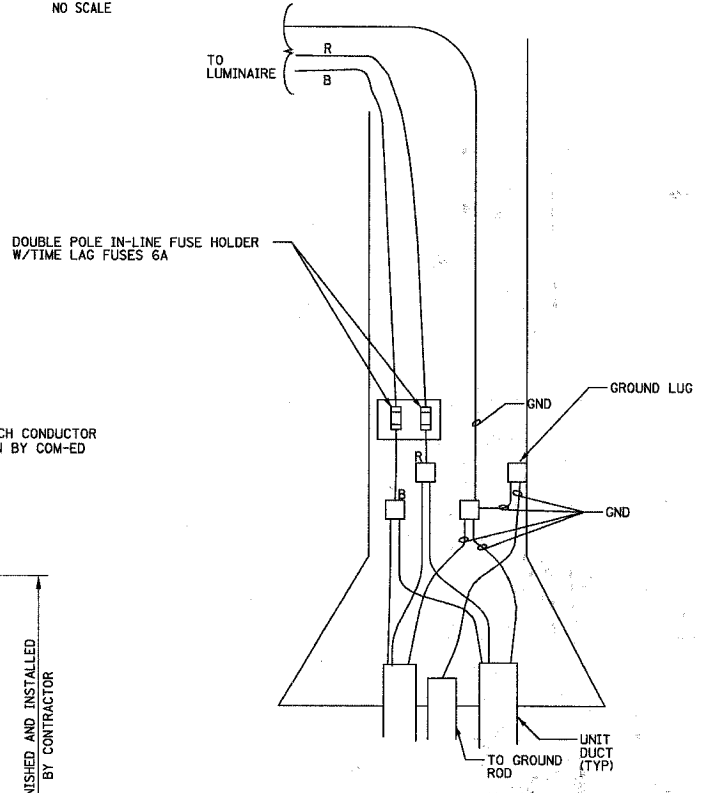


**SPlicing ELECTRICAL CABLES BASIC MATERIALS AND METHODS**  
NO SCALE

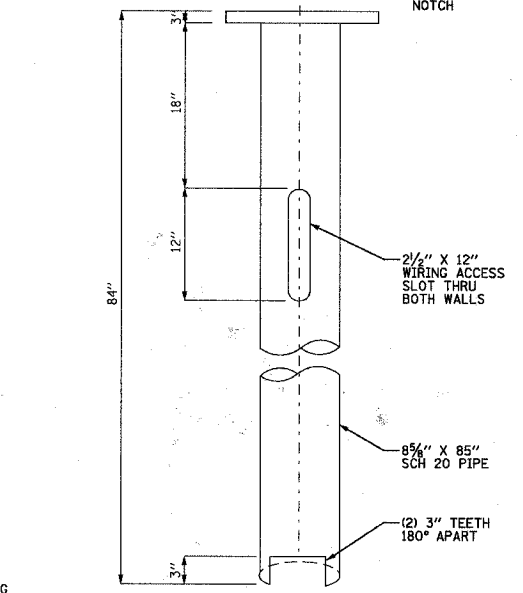


**COM-ED OVERHEAD CONNECTION WHERE REQUIRED**  
NO SCALE

**POWER PEDESTAL DETAIL**  
NO SCALE



**POLE WIRING DETAIL**  
NO SCALE



SUGGESTED FOR 30' POLES

MILLERBERND'S 490A25-GV SCREW-IN-ANCHOR-BASE IS DESIGNED FOR FAST, ONE TRIP INSTALLATION OF LIGHTING POLES. IT IS QUICKLY INSTALLED IN MINUTES, USING A STANDARD DIGGER DERRICK WITH A CONVENTIONAL KELLY BAR.

THE 490A25-GV SCREW-IN-ANCHOR-BASE IS FABRICATED FROM LOW CARBON 36,000 PSI 1" STEEL PLATE AND 35,000 PSI SCHEDULE 20 PIPE. IT IS HOT DIP GALVANIZED PER ASTM A123. THE 490A25-GV IS FURNISHED COMPLETE WITH (4) 1" X 4" ROUND HEAD SQUARE NECK BOLTS (ASTM A325), (4) HEAVY HEX NUTS & (8) FLAT WASHER SHIMS ALL GALVANIZED PER ASTM A153. IT HAS (2) 2 1/2" X 12" WIREWAYS SPACED 180 DEGREES APART. THESE WIREWAYS ARE ALIGNED WITH THE LOCATION NOTCH CUT INTO THE BASE PLATE.

THE BASE IS DESIGNED TO WITHSTAND 15,000 FT. LBS. OF INSTALLATION TORQUE.

**SPECIFICATIONS**

TYPICAL POLE SIZE = 40' W/SINGLE 15' ARM  
MAX. EPA FOR TYP POLE = 1.6 SQ. FT. (SEE NOTE 3)  
MAX. BASE MOMENT = 24, 381 FT. - LB.  
MAX. BASE SHEAR = 924 LBS.  
BOLT CIRCLE = 11"-17"  
SHAFT O.D. = 8 5/8"  
SHAFT LENGTH = 85"  
MATERIAL = SCHEDULE 20  
PLATE MATERIAL = 36,000 PSI MIN. YIELD  
FINISH = HOT DIP GALVANIZED  
ANCHOR BOLTS = 1" X 4" (A325)  
ASSEMBLY WEIGHT = 207 LBS.

\* MAXIMUM MOMENT AND SHEAR RATINGS FOR BASE WHEN USED WITH THE TYPICAL POLE ABOVE.

- NOTE:
1. DESIGNED TO AASHTO-1994, 80 MPH WIND W/ 1.3 GUST. FOR OTHER WIND SPEEDS CONSULT FACTORY.
  2. BASE DESIGNED FOR SOILS WITH 1,000 PSF COHESION OR GREATER.
  3. EPA WILL INCREASE WITH SHORTER ARM LENGTHS OR TENON TOP POLES.

**LIGHTING DETAILS**

DESIGNED BY	SCALE
JLR	NONE
DRAWN BY	PROJECT NO.
CJC	041178
CHECKED BY	SHEET NO.
JTB	
DATE	
11/14/05	<b>13 OF 13</b>

**CITY OF COUNTRY CLUB HILLS, ILLINOIS**  
**NOB HILL STREET LIGHTING IMPROVEMENTS**

**Baxter & Woodman**  
Crystal Lake, Illinois 815.459.1260  
Burlington, Wisconsin 262.763.7834  
Mokena, Illinois 708.478.2090  
DeKalb, Illinois 815.787.3111  
Grayslake, Illinois 847.223.5088  
Rockford, Illinois 815.489.1651

CONSULTANTS	REV. NO.	DATE	DESCRIPTION

\* REFER TO EQUIPMENT MANUFACTURER'S SHOP DRAWINGS

DRAWING FILE: ...N:\041178\dgn\41178-detail1.sht

01/20/2005 01:35:10 PM I:\CCHL\041178\dgn\41178-detail1.sht  
 COPYRIGHT © 2005 BY BAXTER & WOODMAN, INC.  
 STATE OF ILLINOIS PROFESSIONAL DESIGN FIRM  
 LICENSE NO. 041-000000-000000-000000