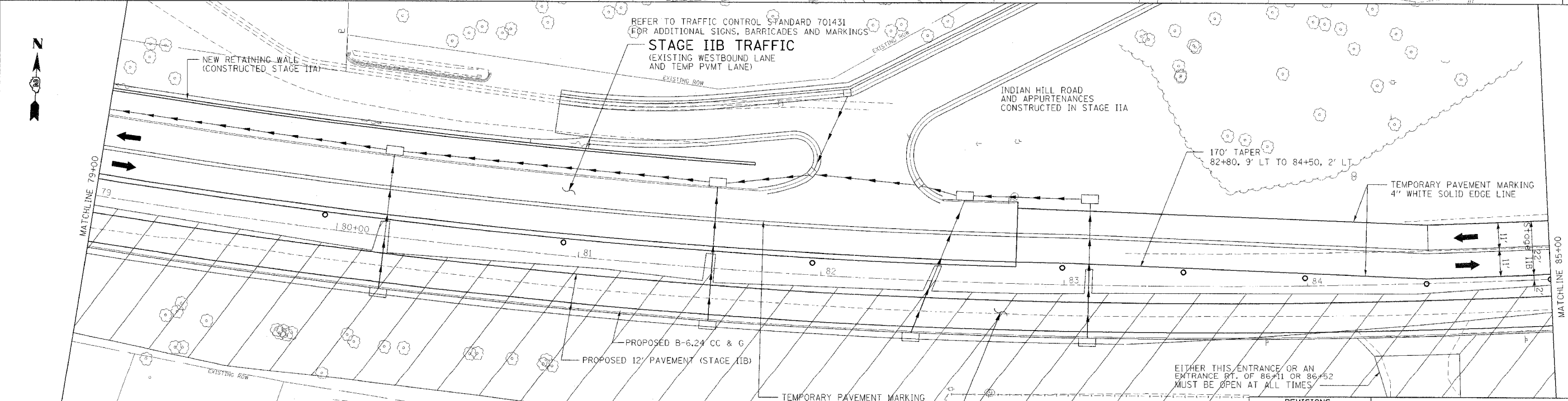
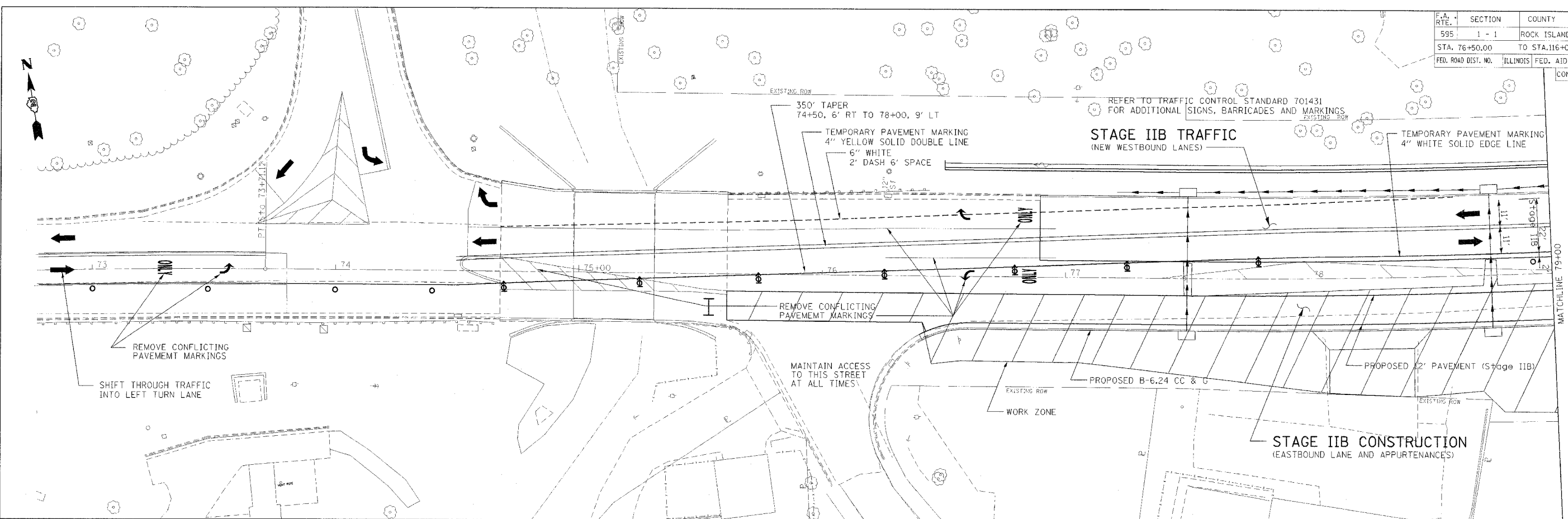


F.A. RTE.	SECTION	COUNTY	TOTAL SHEETS	SHEET NO.
595	1 - 1	ROCK ISLAND	239	51
STA. 76+50.00		TO STA. 116+00.00		
FED. ROAD DIST. NO.		ILLINOIS FED. AID PROJECT		

CONTRACT # 84986



SHEET LEGEND

- ➔ INDICATES DIRECTION OF ONE LANE OF TRAFFIC
- BARRICADE OR DRUM WITH MONODIRECTIONAL STEADY BURN LIGHT
- ⊥ VERTICAL BARRICADE
- ⊥ TYPE III BARRICADE

ILLINOIS PROFESSIONAL DESIGN FIRM NO. 184-001533

Stanley Consultants inc.

852 West Higgins Road, Suite 130, Chicago, Illinois 60630-2801
www.stanleygrp.com

REVISIONS	
NAME	DATE

ILLINOIS DEPARTMENT OF TRANSPORTATION

STAGE IIB STAGING DETAILS

SCALE: VERT. DATE
HORIZ. DATE

DRAWN BY
CHECKED BY

EITHER THIS ENTRANCE OR AN ENTRANCE RT. OF 86+11 OR 86+52 MUST BE OPEN AT ALL TIMES