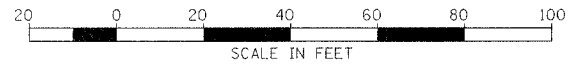
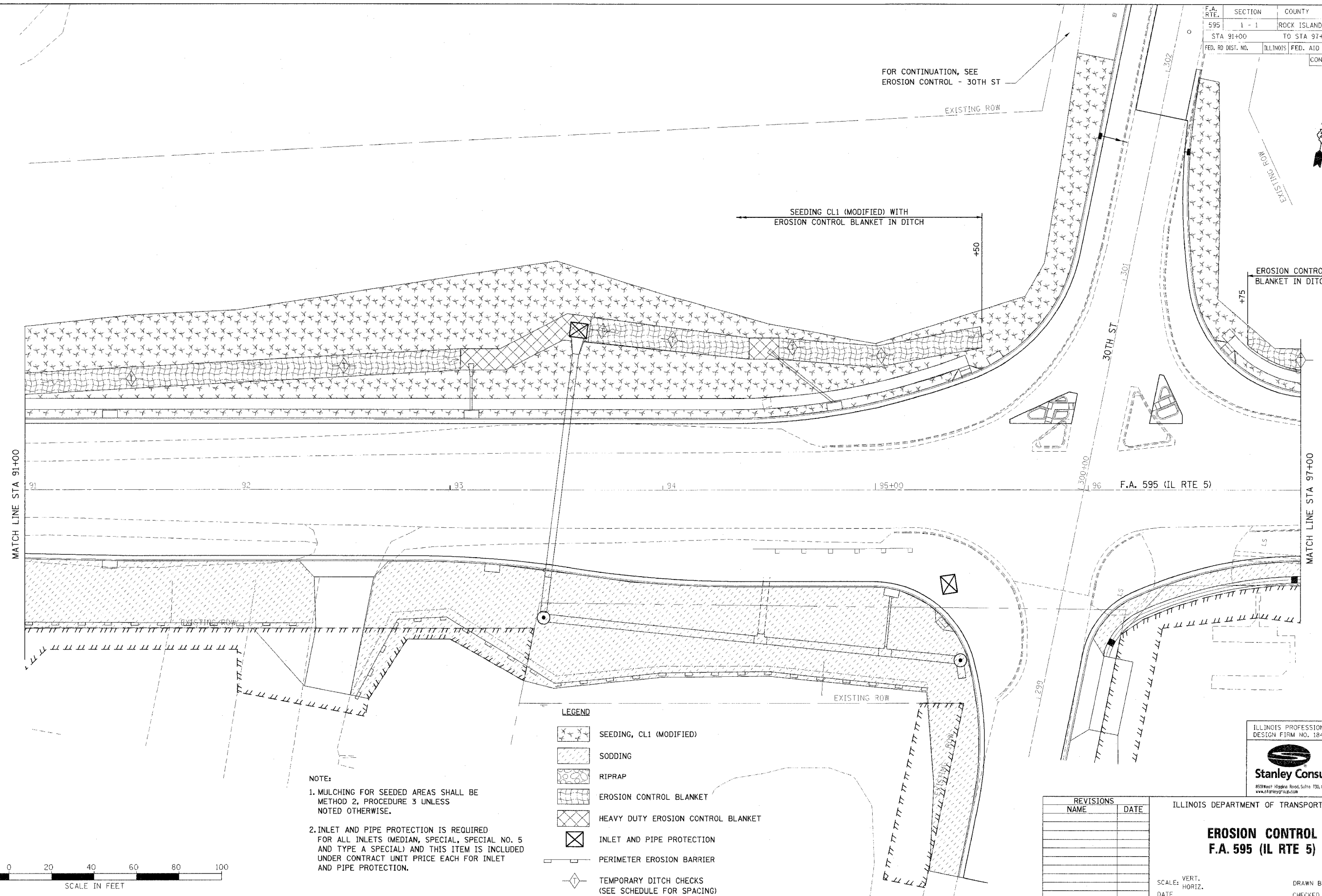


F.A. RTE.	SECTION	COUNTY	TOTAL SHEET SHEETS	NO.
595	1 - 1	ROCK ISLAND	239	67
STA 91+00	TO STA 97+00			
FED. RD DIST. NO.	ILLINOIS	FED. AID PROJECT		
			CONTRACT # 84986	

DATE	BY
DATE	BY
DATE	BY

DATE	BY
DATE	BY
DATE	BY



NOTE:
 1. MULCHING FOR SEEDED AREAS SHALL BE METHOD 2, PROCEDURE 3 UNLESS NOTED OTHERWISE.
 2. INLET AND PIPE PROTECTION IS REQUIRED FOR ALL INLETS (MEDIAN, SPECIAL, SPECIAL NO. 5 AND TYPE A SPECIAL) AND THIS ITEM IS INCLUDED UNDER CONTRACT UNIT PRICE EACH FOR INLET AND PIPE PROTECTION.

LEGEND

	SEEDING, CL1 (MODIFIED)
	SODDING
	RIPRAP
	EROSION CONTROL BLANKET
	HEAVY DUTY EROSION CONTROL BLANKET
	INLET AND PIPE PROTECTION
	PERIMETER EROSION BARRIER
	TEMPORARY DITCH CHECKS (SEE SCHEDULE FOR SPACING)

REVISIONS	
NAME	DATE

ILLINOIS DEPARTMENT OF TRANSPORTATION

EROSION CONTROL
F.A. 595 (IL RTE 5)

SCALE: VERT. _____
 HORIZ. _____
 DATE _____

DRAWN BY _____
 CHECKED BY _____

ILLINOIS PROFESSIONAL DESIGN FIRM NO. 184-001533

Stanley Consultants Inc.
 850 West Higgins Road, Suite 130, Chicago, Illinois 60631-2899
 www.stanleygroup.com