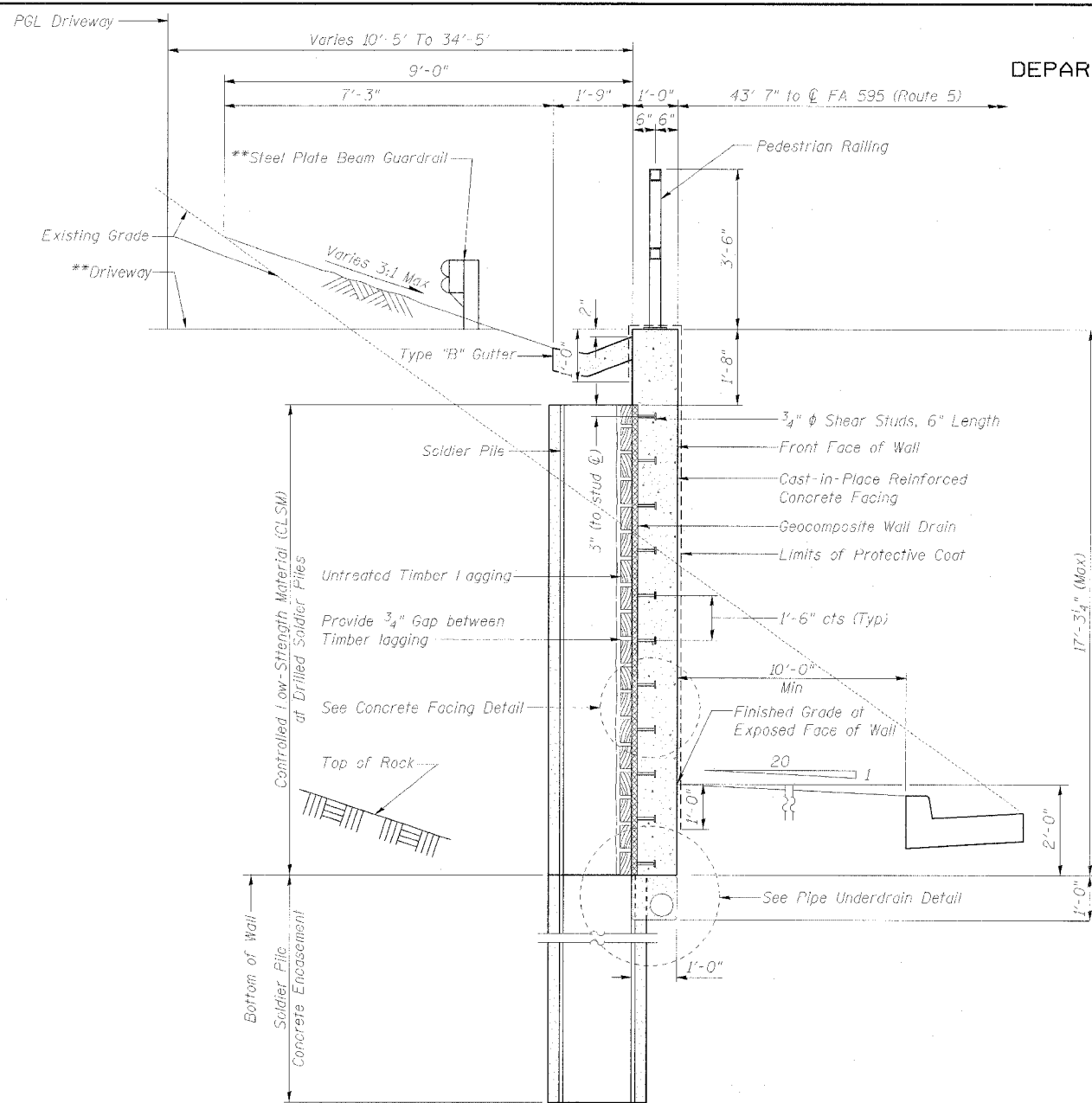


STATE OF ILLINOIS
DEPARTMENT OF TRANSPORTATION

ROUTE NO.	SECTION	COUNTY	TOTAL SHEETS	SHEET NO.
595	I-1	ROCK ISLAND	239	117

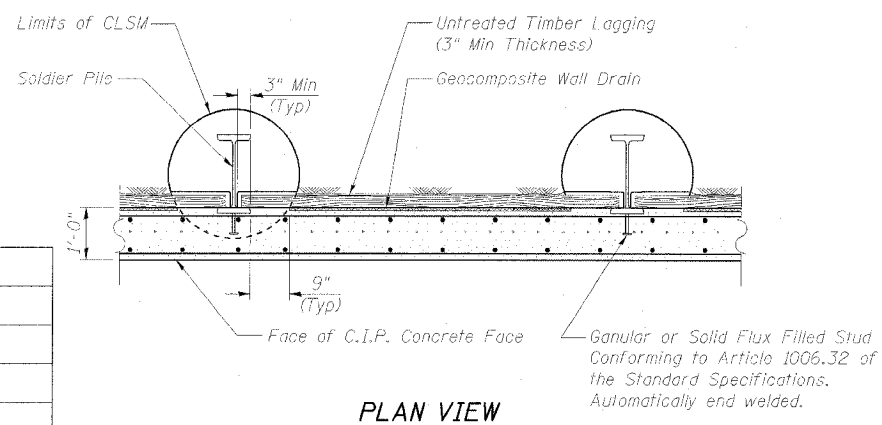
SHEET NO. 3
18 SHEETS

Contract No. 84366

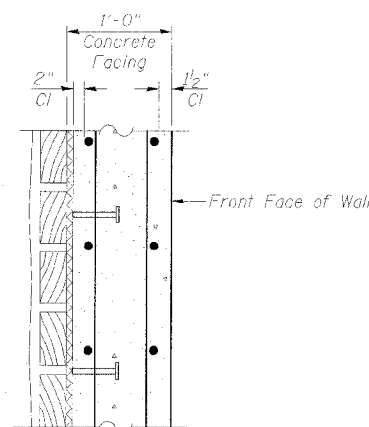


TYPICAL SECTION

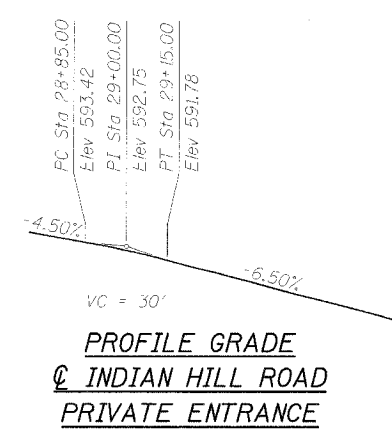
**For Driveway and Steel Plate Beam Guardrail locations see Roadway Plans



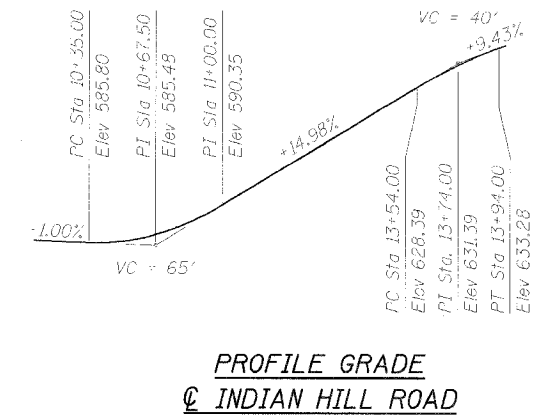
PLAN VIEW



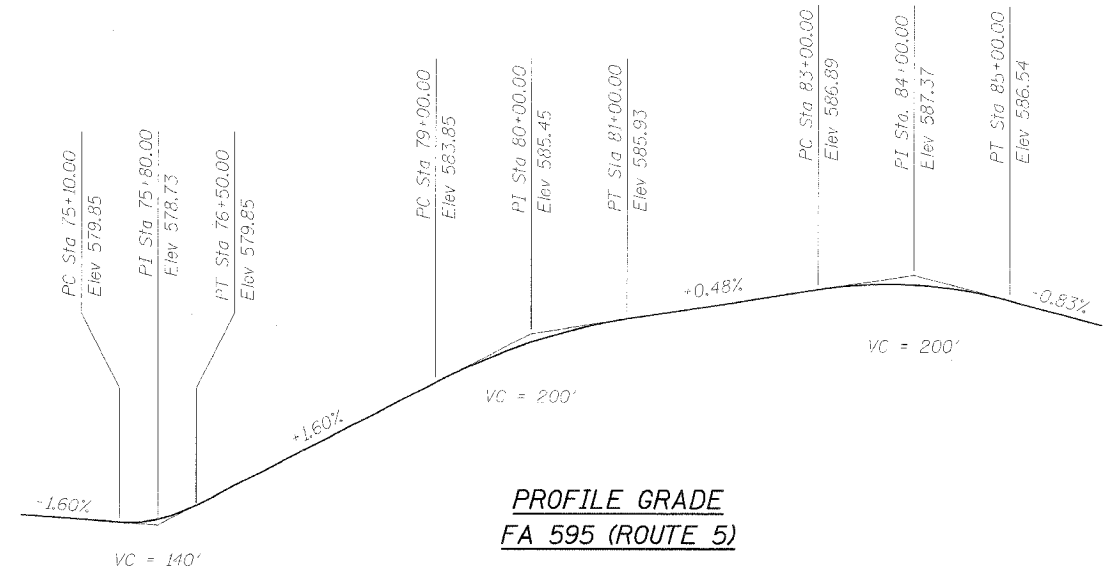
CONCRETE FACING DETAIL



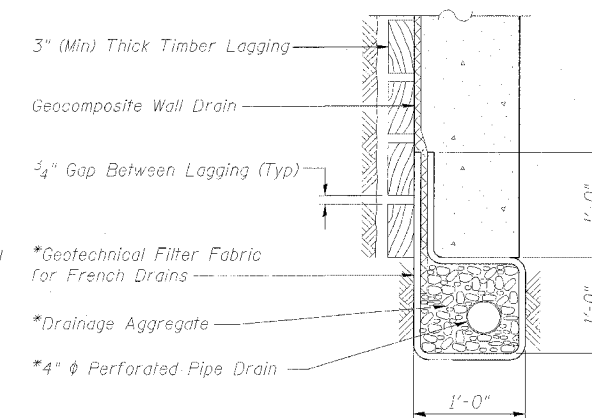
PROFILE GRADE
INDIAN HILL ROAD
PRIVATE ENTRANCE



PROFILE GRADE
INDIAN HILL ROAD



PROFILE GRADE
FA 595 (ROUTE 5)



PIPE UNDERDRAIN DETAIL

(Between piles shown, at piles similar.)

*Included in the cost of "Pipe Underdrain for Structures 4". See Note 1.

NOTES:

- Pipe Underdrains, Aggregate for French Drains and Geotechnical Filter Fabric for French Drains shall be according to Section 601 of the Standard Specifications, except that this material will not be paid for separately, but shall be paid for at the Contract Unit price per foot for Pipe Underdrain for Structures 4.

Illinois Firm Registration No. 084-00833



TYPICAL SECTION AND DETAILS
RETAINING WALL D ALONG
IL ROUTE 5
FA 595 (IL ROUTE 5) SECTION I-1
ROCK ISLAND COUNTY
STA 76+50.00 TO STA 81+70.00
STRUCTURE NO. 081-W006

DESIGNED	NDR
CHECKED	DSE
DRAWN	RTT
CHECKED	DSE
DATE	JAN 31, 2006