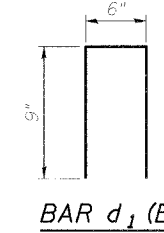


STATE OF ILLINOIS  
DEPARTMENT OF TRANSPORTATION

ROUTE NO.	SECTION	COUNTY	SHEETS	DATE	SHEET NO.
595	1-1	ROCK ISLAND	239	124	18 SHEETS
Contract No. 84986					

BILL OF MATERIAL

Bar	No.	Size	Length	Shape
d1 (E)	36	#4	2'-0"	□
h8 (E)	36	#6	32'-1"	—
h8 (E)	14	#6	29'-8"	—
h21(E)	4	#4	31'-8"	—
h22(E)	2	#4	29'-8"	—
h23(E)	2	#4	13'-3"	—
h24(E)	2	#4	19'-11"	—
h25(E)	2	#4	28'-3"	—
h26(E)	2	#4	9'-1"	—
v15 (E)	124	#4	6'-0"	—
v16 (E)	30	#4	6'-6"	—
v17 (E)	32	#4	5'-7"	—
v18 (E)	30	#4	4'-9"	—
v19 (E)	32	#4	3'-11"	—
v20(E)	62	#4	4'-0"	—
v21(E)	30	#4	5'-2"	—
v22(E)	32	#4	4'-4"	—
Structure Excavation		Cu Yd	51.1	
Rock Excavation		Cu Yd	27.1	
For Structures				
Concrete Structures		Cu Yd	28.7	
Reinforcement Bars, Epoxy Coated		Pound	3940	



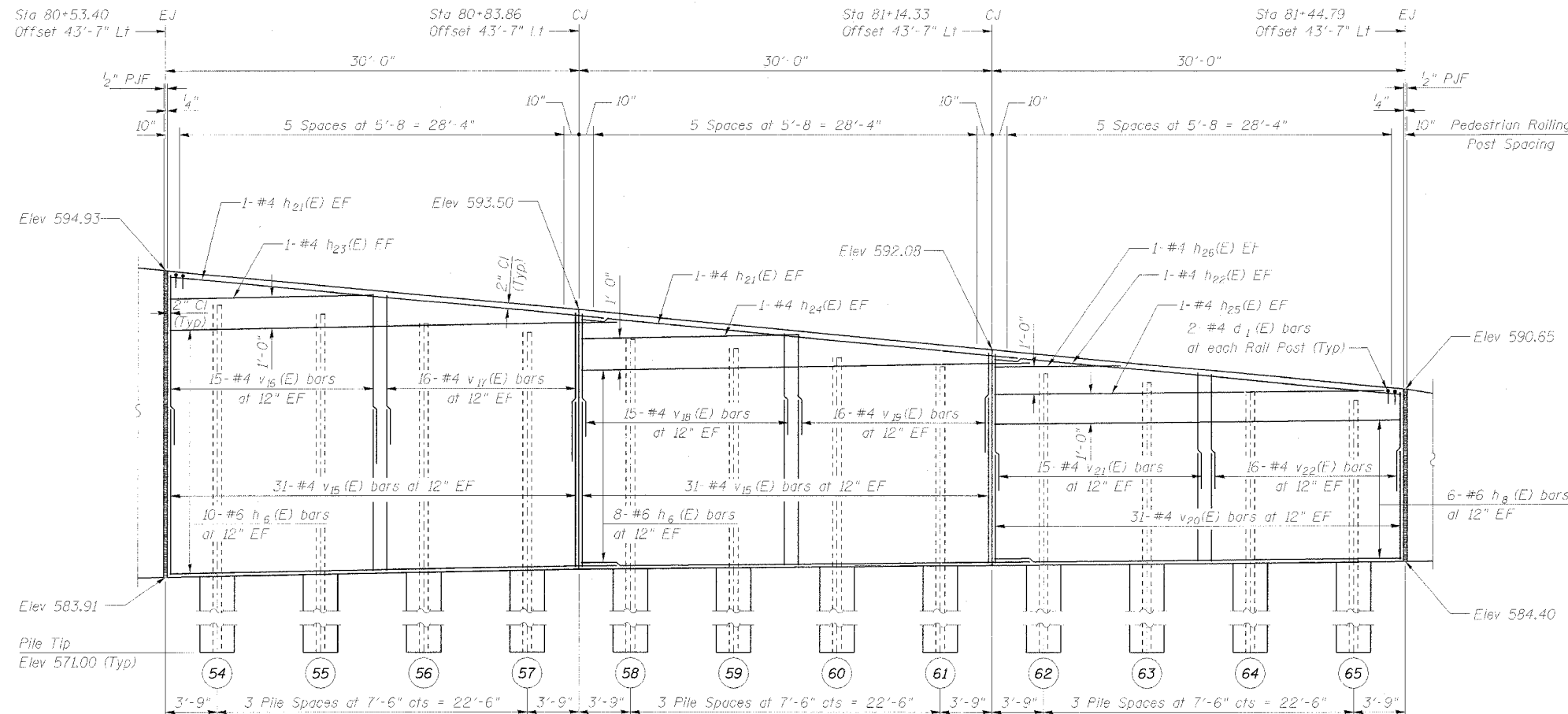
Reinforcement bars designated (E) shall be epoxy coated.

See Sheet 2 of 18 for Expansion Joint and Water Seal Placement Detail.

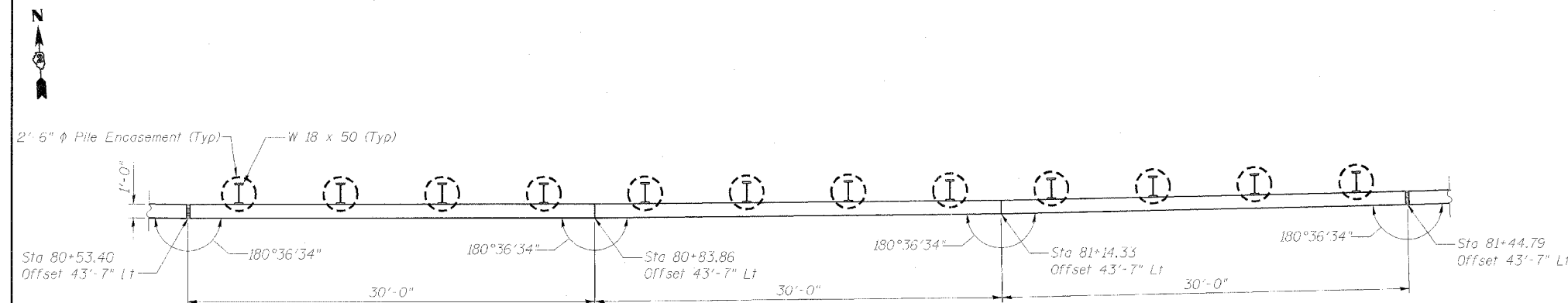
See Sheet 12 of 18 for Pedestrian Railing Details.

See Sheet 3 of 18 for Retaining Wall, Typical Section and Underdrain Details.

Min Lap Length: #4 bar = 1'-8"  
#6 bar = 2'-7"



FRONT FACE ELEVATION



PLAN

DESIGNED	-	NDR
CHECKED	-	DSE
DRAWN	-	RTT
CHECKED	-	DSE
DATE	-	JAN 31, 2006

Illinois Firm Registration No. 84-00633

Stanley Consultants Inc.  
850 West Higgins Road, Suite 730, Chicago, Illinois 60631-2801  
www.stanleygroup.com

WALL PLAN AND ELEVATION  
RETAINING WALL D ALONG  
IL ROUTE 5  
FA 595 (IL ROUTE 5) SECTION 1-1  
ROCK ISLAND COUNTY  
STA 76+50.00 TO STA 81+70.00  
STRUCTURE NO. 081-W006