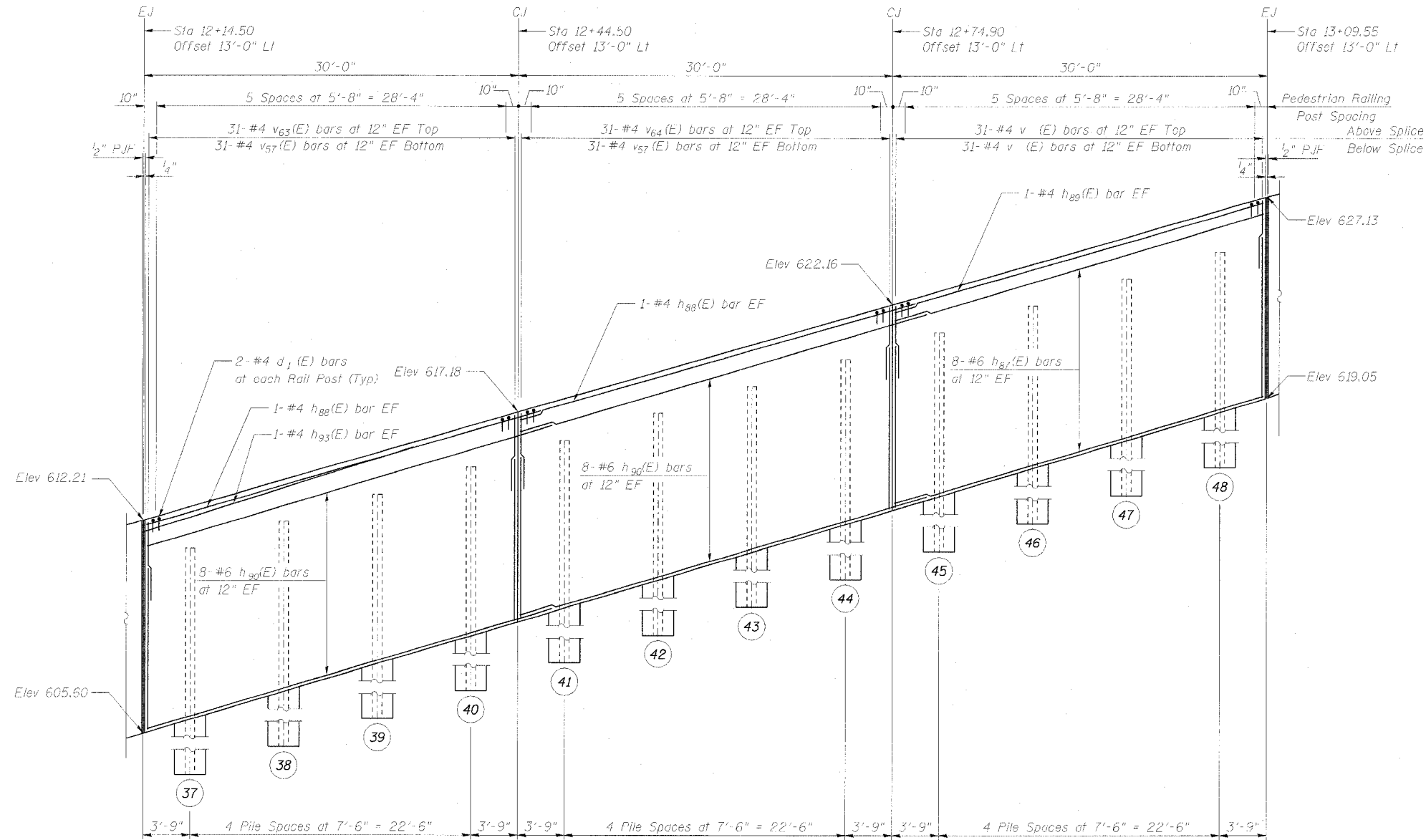


STATE OF ILLINOIS
DEPARTMENT OF TRANSPORTATION

ROUTE NO.	SECTION	COUNTY	TOTAL SHEETS	SHEET NO.
595	1-1	ROCK ISLAND	239	152

ILLINOIS DEPARTMENT OF TRANSPORTATION
Contract No. 84966

SHEET NO. 8
13 SHEETS

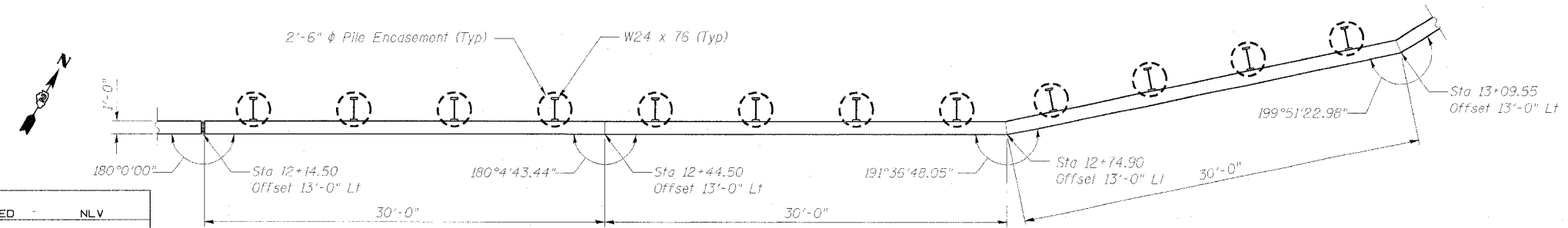


BILL OF MATERIAL

Bar	No.	Size	Length	Shape
d1 (E)	36	#4	2'-0"	Π
h87(E)	15	#6	30'-0"	—
h88(E)	4	#4	32'-0"	—
h89(E)	2	#4	29'-11"	—
h90(E)	32	#6	33'-2"	—
h93(E)	2	#4	21'-3"	—
v57(E)	186	#4	6'-0"	—
v62(E)	62	#4	3'-0"	—
v63(E)	62	#4	2'-0"	—
v64(E)	62	#4	2'-6"	—
Structure Excavation	Cu Yd		46.6	
Concrete Structures	Cu Yd		24.5	
Reinforcement Bars, Epoxy Coated	Pound		3570	

Reinforcement bars designated (E) shall be epoxy coated.
See Sheet 2 of 13 for Expansion Joint and Water Seal Placement Detail.
See Sheet 10 of 13 for Pedestrian Railing Details.
See Sheet 3 of 13 for Retaining Wall, Typical Section and Underdrain Details.
Min Lap Length: #4 bar = 1'-8"
#6 bar = 2'-7"

FRONT FACE ELEVATION



PLAN

DESIGNED	NLV
CHECKED	DSE
DRAWN	RTT
CHECKED	DSE
DATE	JAN 31, 2006

Illinois Firm Registration No. 04-00533

Stanley Consultants Inc.
850 West Higgins Road, Suite 730, Chicago, Illinois 60631-2801
www.stanleygroup.com

WALL PLAN AND ELEVATION
RETAINING WALL F ALONG
INDIAN HILL ROAD
FA 595 (IL ROUTE 5) SECTION 1-1
ROCK ISLAND COUNTY
STA 80+86.37 TO STA 13+73.25