

ROUTE NO.	SECTION	COUNTY	TOTAL SHEETS	SHEET NO.
S.B. 224 F.A. 224	04-00137-02-FP	HENRY	23	1
FED. ROAD DIST. NO. 7		ILLINOIS	FED. AID PROJECT OR-224(106)	

INDEX OF SHEETS

1	COVER SHEET AND INDEX OF SHEETS
2	SUMMARY OF QUANTITIES
3 - 4	TYPICAL SECTIONS
5 - 8	SCHEDULES OF QUANTITIES & GENERAL NOTES
9 - 12	PLAN AND PROFILE - WOLF ROAD
13	PLAN AND PROFILE - 1200 E. ROAD
14 - 18	STORM WATER POLLUTION PREVENTION PLAN
19 - 21	CROSS SECTIONS - WOLF ROAD
22	CROSS SECTIONS - 1200 E. ROAD
23	CONCRETE GUTTER TYPE A (MODIFIED)

STATE OF ILLINOIS  
COUNTY OF HENRY  
PLANS FOR PROPOSED  
FEDERAL-AID SECONDARY PROJECT

SECTION 04-00137-02-FP  
WOLF ROAD/1200 E. ROAD  
INTERSECTION & TURN LANES  
F.A.S. ROUTE 224 C.H. 2  
PROJECT SR-224(106)  
JOB NO. C-92-062-05  
CONTRACT NO. 85371  
2006

STANDARDS

000001-04	STANDARD SYMBOLS, ABBREVIATIONS, AND PATTERNS
280001-02	TEMPORARY EROSION CONTROL SYSTEMS
406201	MAILBOX TURNOUT
542401	METAL END SECTION FOR PIPE CULVERTS
606101-01	TYPE A GUTTER (INLET, OUTLET & ENTRANCE)
666001	RIGHT OF WAY MARKERS
701001-01	OFF-ROAD OPERATIONS, 2L 2W, 4.5 m (15') MIN. AWAY, FOR SPEEDS > 45 MPH
701006-02	OFF-ROAD OPERATIONS, 2L 2W, 4.5 m (15') TO 600 m (24') FROM PAVEMENT EDGE
701301-02	LANE CLOSURE, 2L 2W, SHORT TIME OPERATIONS
701306-01	LANE CLOSURE, 2L 2W, SLOW MOVING OPERATIONS DAY ONLY, FOR SPEEDS > 45 MPH
701311-02	LANE CLOSURE, 2L 2W, MOVING DAY ONLY OPERATIONS
701326-02	LANE CLOSURE 2L, 2W PAVEMENT WIDENING, FOR SPEEDS > 45 MPH
702001-06	TRAFFIC CONTROL DEVICES
780001-01	TYPICAL PAVEMENT MARKINGS

NAME AND ADDRESS OF UTILITIES	TYPE
MEDIACOM 3900 26th Avenue Moline, IL 61265 Attn: Dennis Jarding (309) 743-4750	CABLE TV
GENESEO COMMUNICATIONS 111 E. First Street Geneeseo, IL 61254 Attn: Matt Storm (309) 944-2103 X 012	TELEPHONE
MIDAMERICAN ENERGY 2811 Fifth Avenue Rock Island, IL 61201 Attn: Steve Kelsey (309) 793-3778	GAS/ELECTRIC

PLAN HORIZ. 1" = 20'  
PROFILE HORIZ. 1" = 20'  
PROFILE VERT. 1" = 5'  
CROSS SECTIONS 1" = 5', 10'

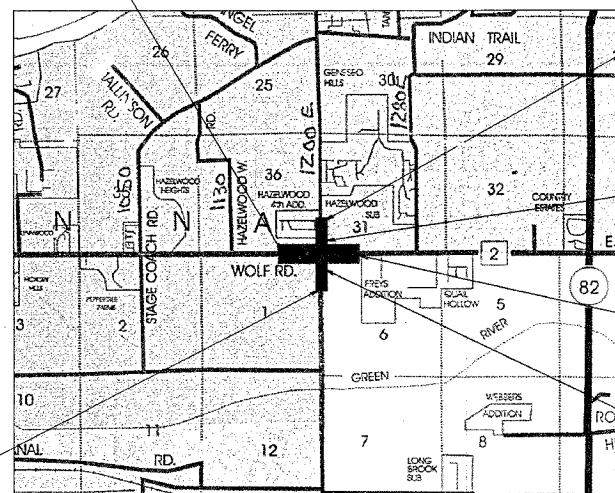
WOLF ROAD  
BEGINS AT STA. 635+98.67

1200 E. ROAD NORTH  
ENDS AT STA. 22+04.11

1200 E. ROAD NORTH  
BEGINS AT STA. 20+19

WOLF ROAD  
ENDS AT STA. 655+68.87

1200 E. ROAD SOUTH  
BEGINS AT STA. 13+72.16



LOCATION MAP

NET LENGTH = 2,354.49 FEET = 0.45 MILES

DESIGN CRITERIA

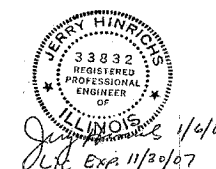
DESIGN SPEED: 60 MPH - WOLF ROAD  
50 MPH - 1200 E. ROAD

CLEAR ZONE: 20'

FUNCTIONAL CLASSIFICATION	HIGHWAY	DHV (2024)	TRUCKS (1%)
LOCAL	1200 E. ROAD	200-400	1
MAJOR COLLECTOR	WOLF ROAD	400-1425	1

APPROVED: Jan 6 2006  
Stewart B. ... LOCAL AGENCY OFFICIAL  
 PASSED: January 27 2006  
Jan ... DISTRICT ENGINEER OF LOCAL ROAD & STREET  
 APPROVED: January 27 2006  
For BIDDING DISTRICT ENGINEER

STATE OF ILLINOIS  
DEPARTMENT OF TRANSPORTATION



809 East Second Street Dixon, Illinois 61021  
 Phone 815.284.3381 Fax 815.284.3385  
 Design Firm #184-000918  
 www.willetthofmann.com