

STATE OF ILLINOIS
DEPARTMENT OF TRANSPORTATION
**PLANS FOR
PROPOSED LOCAL AGENCY IMPROVEMENT
FEDERAL-AID URBAN PROJECT**

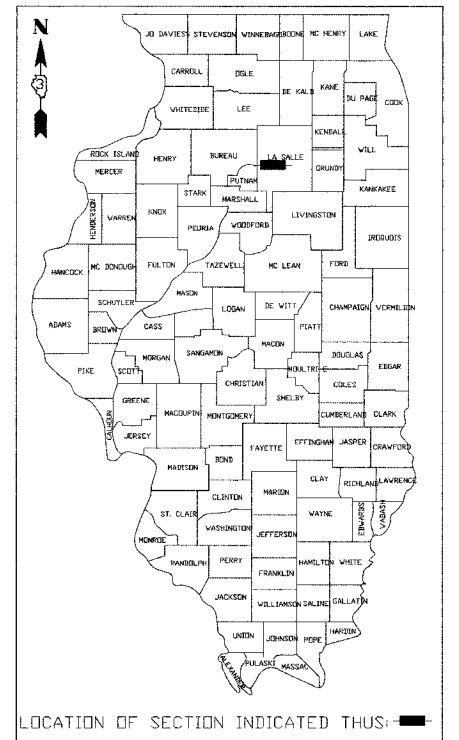
F.A.U. RTE.	SECTION	COUNTY	TOTAL SHEETS	THIS SHEET
6085	03-00069-00-FP	LASALLE	25	1
ILLINOIS		PROJECT	M-5036(91)	

CONTRACT NO. 87276

INDEX OF SHEETS

1. COVER SHEET
2. GENERAL NOTES, SUMMARY OF QUANTITIES
SCHEDULE OF QUANTITIES, DETAILS
3. TYPICAL SECTIONS
4. SCHEDULE OF QUANTITIES
5. PLAN AND PROFILE STA. 0+50 TO 6+00
6. PLAN AND PROFILE STA. 6+00 TO 11+00
7. PLAN AND PROFILE STA. 11+00 TO 16+50
8. PLAN AND PROFILE STA. 16+50 TO 22+00
9. PLAN AND PROFILE STA. 22+00 TO 25+92
10. PAVEMENT MARKING PLAN STA. 0+50 TO 6+00
11. PAVEMENT MARKING PLAN STA. 6+00 TO 11+00
12. PAVEMENT MARKING PLAN STA. 11+00 TO 16+50
13. PAVEMENT MARKING PLAN STA. 16+50 TO 22+00
14. PAVEMENT MARKING PLAN STA. 22+00 TO 25+92
- 15.-25. CROSS SECTIONS

CITY OF LASALLE
F.A.U. ROUTE 6085 (O'CONOR AVENUE)
SECTION 03-00069-00-FP
PROJECT NO. M-5036 (91)
C-93-066-04

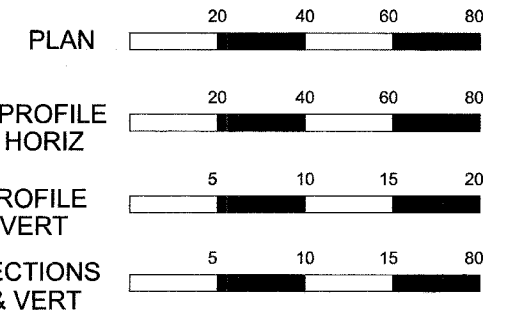
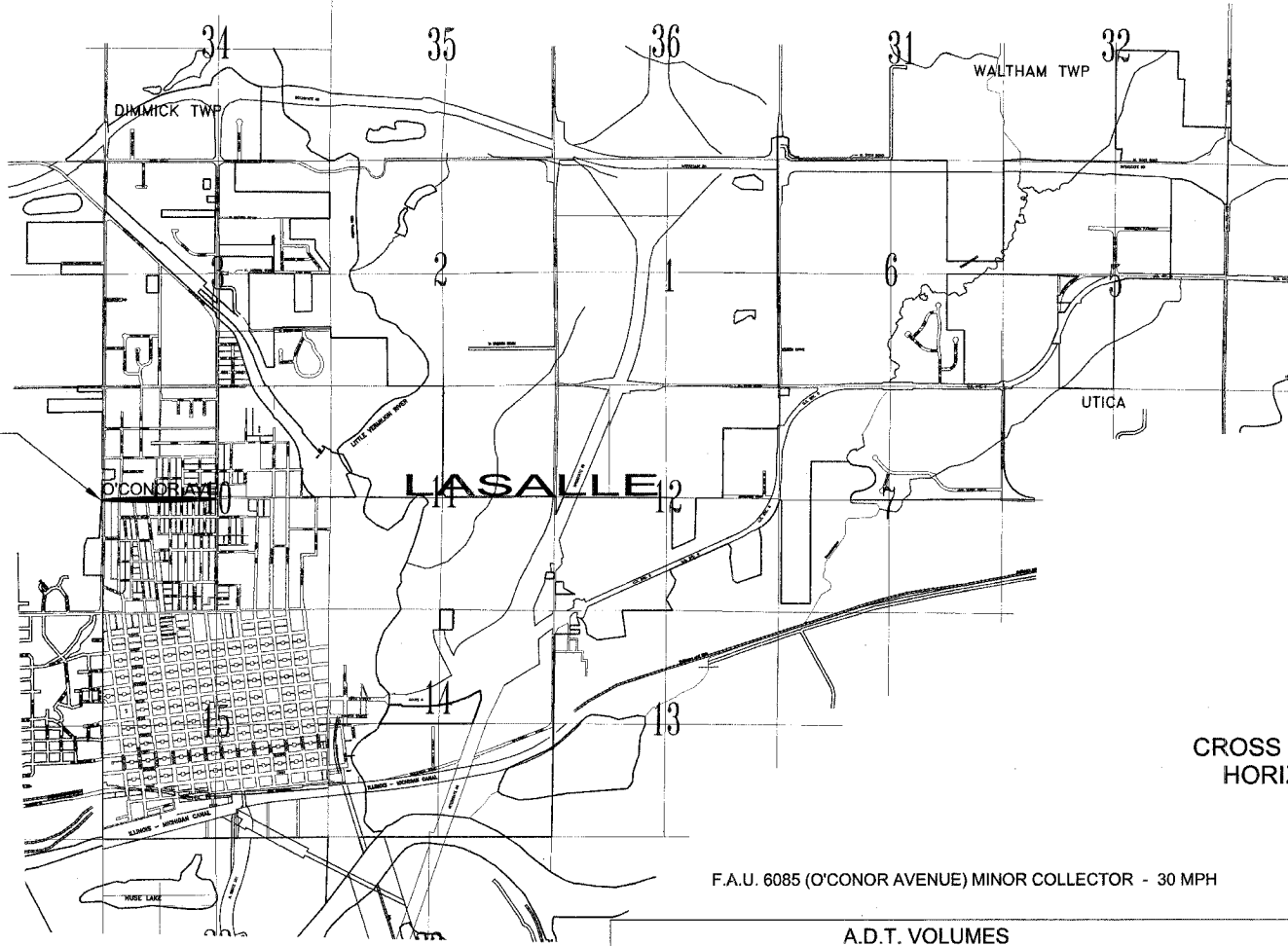
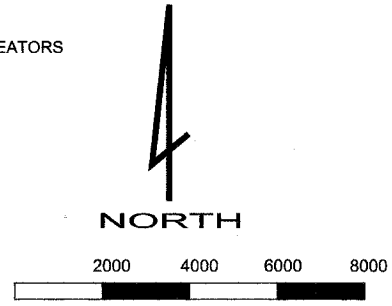


HIGHWAY STANDARDS

- 424001-04 CURB RAMPS FOR SIDEWALKS
- 442201-01 CLASS C AND D PATCHES
- 602011 CATCH BASIN, TYPE C
- 602301-01 INLET, TYPE A
- 602401-01 MANHOLE, TYPE A
- 602701-01 MANHOLE STEPS
- 604001-02 FRAMES AND LIDS TYPE 1
- 604006-02 FRAME AND GRATE, TYPE 3
- 604051-02 FRAME AND GRATE TYPE 11
- 606001-02 CONCRETE CURB TYPE B AND COMBINATION CONCRETE CURB AND GUTTER
- 701501-03 URBAN LANE CLOSURE, 2L, 2W UNDIVIDED
- 702001-06 TRAFFIC CONTROL DEVICES
- 720001 SIGN PANEL MOUNTING DETAILS
- 720006 SIGN PANEL ERECTION DETAILS
- 720011 METAL POSTS FOR SIGNS, MARKERS & DELINEATORS
- 780001-01 TYPICAL PAVEMENT MARKINGS
- 805001 ELECTRICAL SERVICE INSTALLATION DETAILS

PROJECT LOCATION

BEGIN PROJECT STA. 0+50
END PROJECT STA. 25+92



F.A.U. 6085 (O'CONOR AVENUE) MINOR COLLECTOR - 30 MPH

A.D.T. VOLUMES

- 2006 F.A.U. 6085 (O'CONOR AVE)
- ADT = 1600 VEHICLES PER DAY (88% P.C., 7% S.U., 5% M.U.)
- 2026 F.A.U. 6085 (O'CONOR AVE)
- ADT = 1650 VEHICLES PER DAY (88% P.C., 7% S.U., 5% M.U.)

TOTAL GROSS AND NET LENGTH OF O'CONOR AVENUE = 2650 FEET (0.502 MILES)

POLICY STATEMENT: PLANS DEVELOPED IN ACCORDANCE WITH THE FEDERAL AID PROCEDURES FOR LOCAL HIGHWAY IMPROVEMENTS AND THE 3-R GUIDELINES



I HEREBY STATE THAT THIS PLAN AND SPECIFICATION WAS PREPARED BY ME OR UNDER MY DIRECT PERSONAL SUPERVISION AND THAT I AM A DULY REGISTERED PROFESSIONAL ENGINEER UNDER THE LAWS OF THE STATE OF ILLINOIS

Pamela Broviak
PAMELA A. BROVIK, PROFESSIONAL ENGINEER
NO. 0062-048887 EXPIRES: 11/30/2007

2-24-2006
DATE

JOINT UTILITY LOCATING INFORMATION FOR EXCAVATORS (J.U.L.I.E.) DIAL TOLL FREE NUMBER 800-892-0123

CONTRACT NO. 87276

APPROVED _____ 2-24 20 06
A. J. Usisnik
LOCAL AGENCY REPRESENTATIVE

PASSED _____ 2/27 20 06
Samuel R. Ly
DISTRICT ENGINEER OF LOCAL ROADS & STREETS

APPROVED _____ 2/27 20 06
Gregory Mounts
DEPUTY DIRECTOR REGION 2 ENGINEER

STATE OF ILLINOIS
DEPARTMENT OF TRANSPORTATION