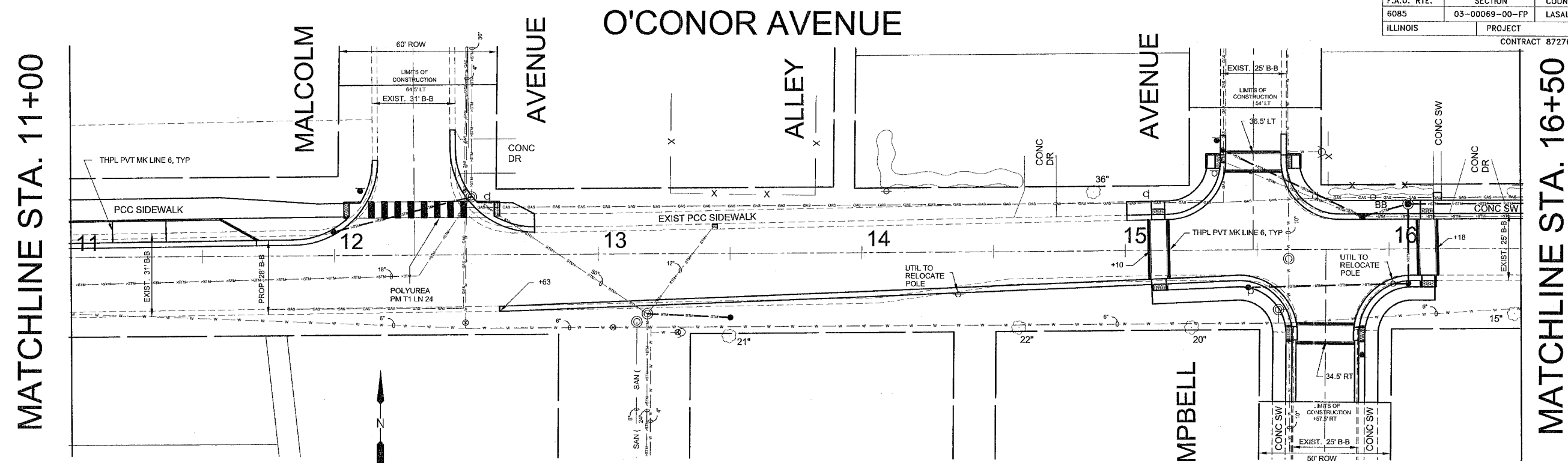


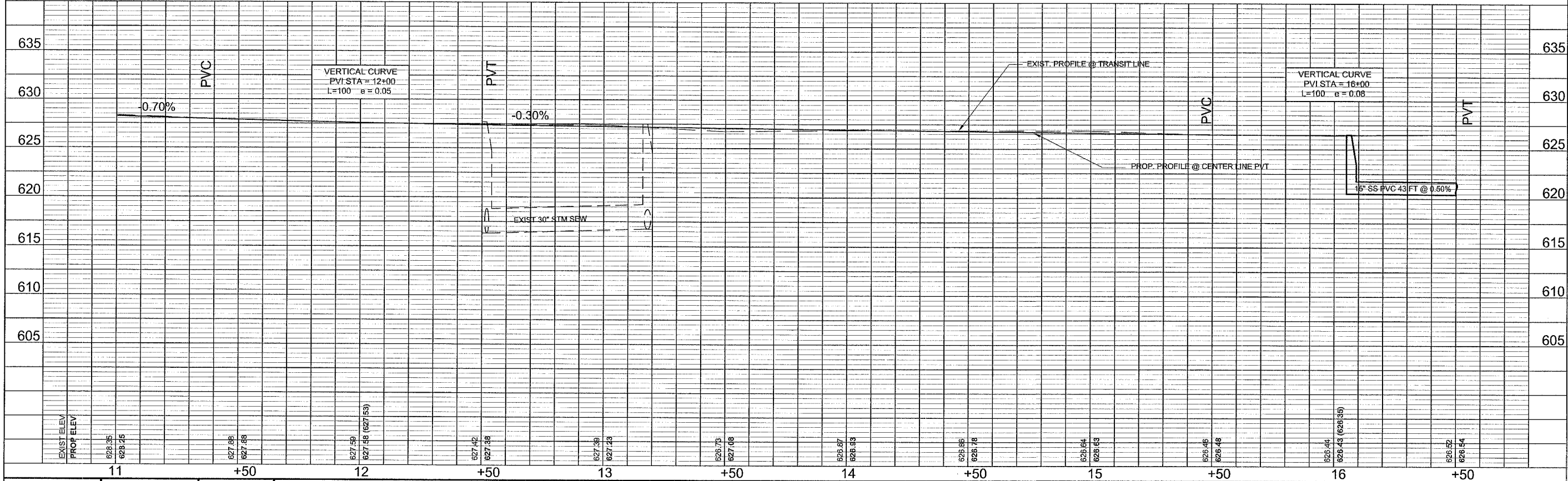
F.A.U. RTE.	SECTION	COUNTY	TOTAL SHEETS	THIS SHEET
6085	03-00069-00-FP	LASALLE	25	12
ILLINOIS	PROJECT	M-5036(91)		
CONTRACT 87276				



SCALE:
HORIZ.: 1" = 20'
VERT.: 1" = 5'

HORIZONTAL CONTROL
ALL STATIONS ARE STAKED IN THE FIELD ALONG THE EXISTING TRANSIT LINE WITH PK NAILS WHERE POSSIBLE

BENCH MARK:
"OPEN" ON THE FH AT THE SE COR
PARK AND O'CONOR
ELEV. = 629.35
(STA. 13+31.5 29.5' RT)



EXIST. ELEV.	PROP. ELEV.	628.95	628.45	627.98	627.48	627.98	627.48 (627.83)	627.92	627.38	627.38	627.87	627.33	626.73	627.18	626.67	626.13	626.95	626.48	626.44	626.43 (626.84)	626.52	626.04
11	+50	12	+50	13	+50	14	+50	15	+50	16	+50											

DRAWN BY: PAB
CHECKED BY: DEB

CAD: OCONORPG12
DATE: 2/2006

REVISIONS
DATE BY
CITY OF LASALLE

CITY OF LA SALLE
O'CONOR AVENUE RECONSTRUCTION
03-00069-00-FP

PAVEMENT MARKING PLAN
O'CONOR AVENUE
STA. 11+00 TO STA. 16+50

SCALE: AS NOTED
FILE NO.:
SHEET 12 OF 25