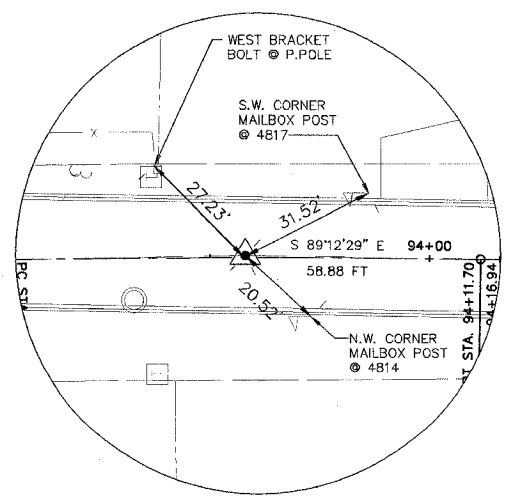
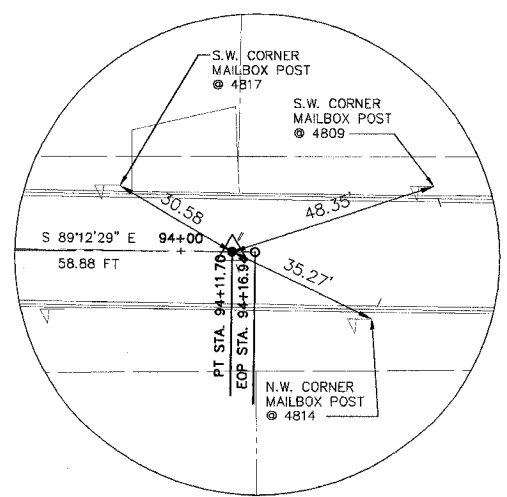


PC STA. 93+04.44  
(SANDRON)  
PK NAIL  
N. 1961.09  
E. 5263.30



PI STA. 93+58.07  
(SANDRON)  
PK NAIL  
N. 1962.09  
E. 5316.93



PT STA. 94+11.70  
(SANDRON)  
PK NAIL  
N. 1961.35  
E. 5370.56