

- LEGEND**
- PAVEMENT REMOVAL
 - DRIVEWAY PAVEMENT REMOVAL
 - BALANCE EARTHWORK
 - RT- STORM SEWER SYSTEM (LT SIDE)
 - LT- STORM SEWER SYSTEM (RIGHT SIDE)
 - XX TREE REMOVAL, C.C.C.G REMOVAL AND OTHER MISC. REMOVALS

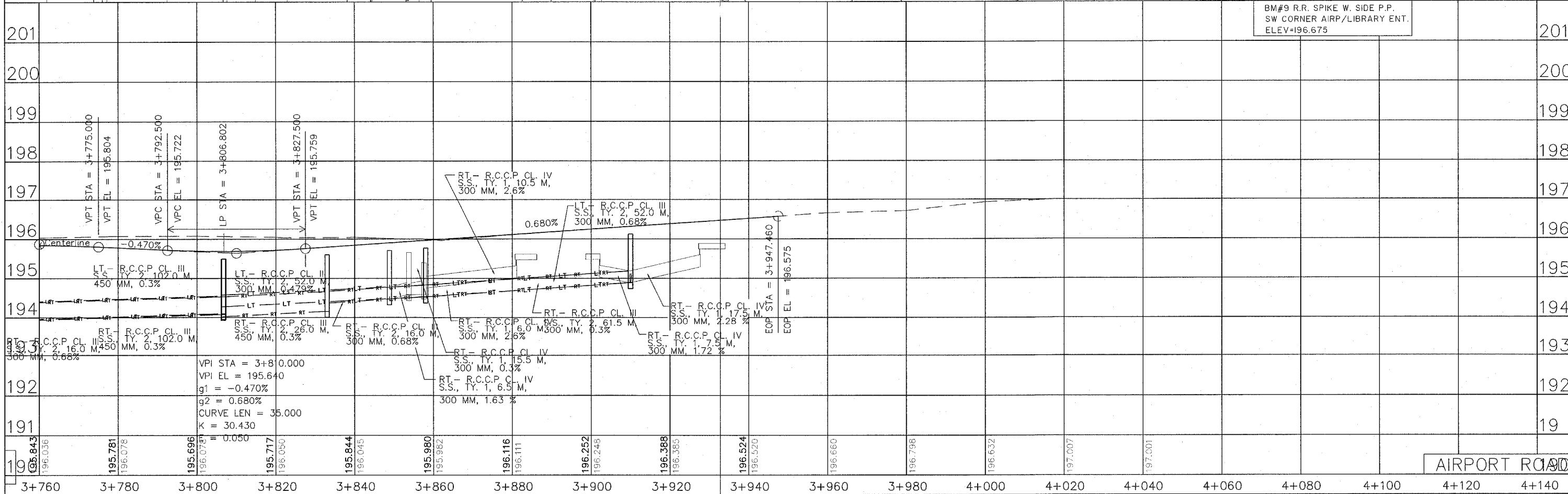
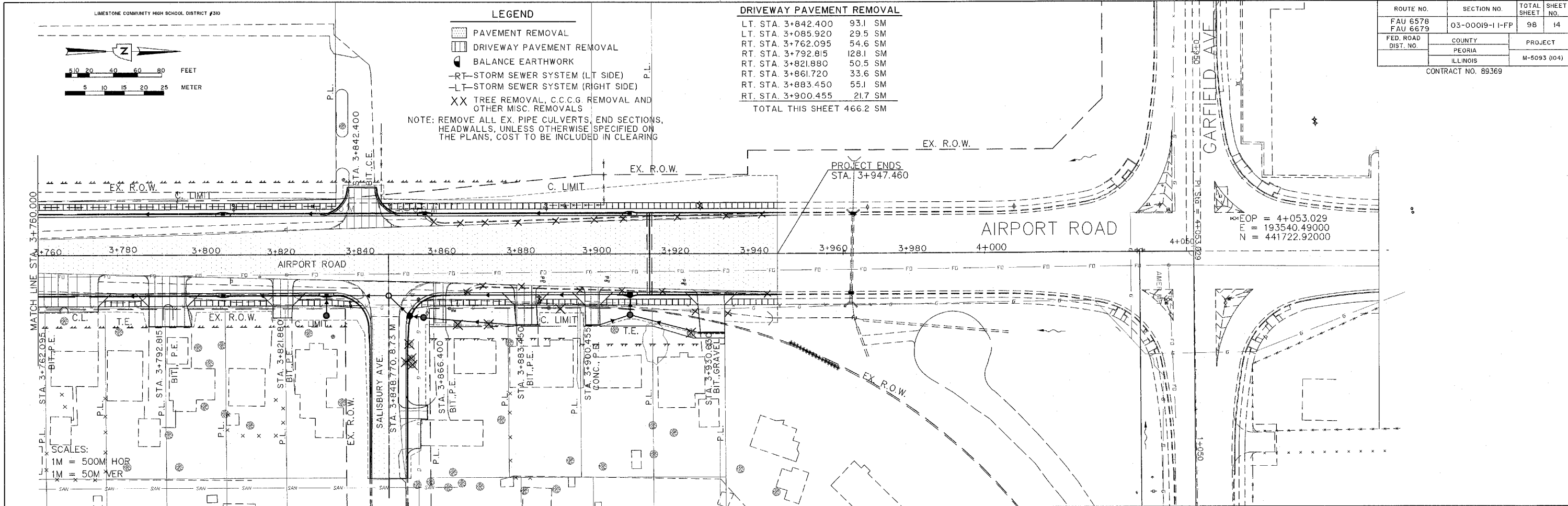
DRIVEWAY PAVEMENT REMOVAL

LT. STA. 3+842.400	93.1 SM
LT. STA. 3+085.920	29.5 SM
RT. STA. 3+762.095	54.6 SM
RT. STA. 3+792.815	128.1 SM
RT. STA. 3+821.880	50.5 SM
RT. STA. 3+861.720	33.6 SM
RT. STA. 3+883.450	55.1 SM
RT. STA. 3+900.455	21.7 SM
TOTAL THIS SHEET	466.2 SM

NOTE: REMOVE ALL EX. PIPE CULVERTS, END SECTIONS, HEADWALLS, UNLESS OTHERWISE SPECIFIED ON THE PLANS, COST TO BE INCLUDED IN CLEARING

ROUTE NO.	SECTION NO.	TOTAL SHEET NO.	SHEET NO.
FAU 6578 FAU 6679	03-00019-1 I-FP	98	14
FED. ROAD DIST. NO.	COUNTY	PROJECT	
	PEORIA	M-5093 (04)	
	ILLINOIS		

CONTRACT NO. 89369



BM#9 R.R. SPIKE W. SIDE P.P.
SW CORNER AIRP/LIBRARY ENT.
ELEV=196.675

AIRPORT ROAD