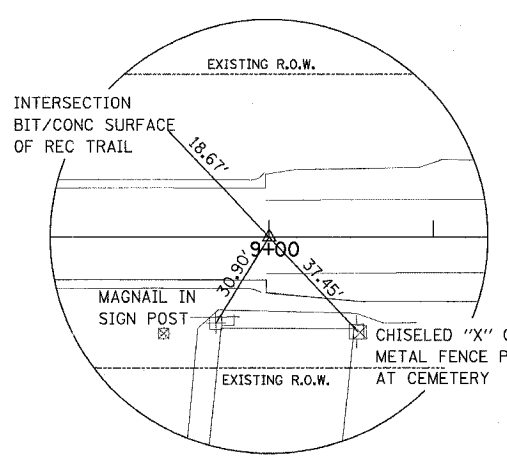
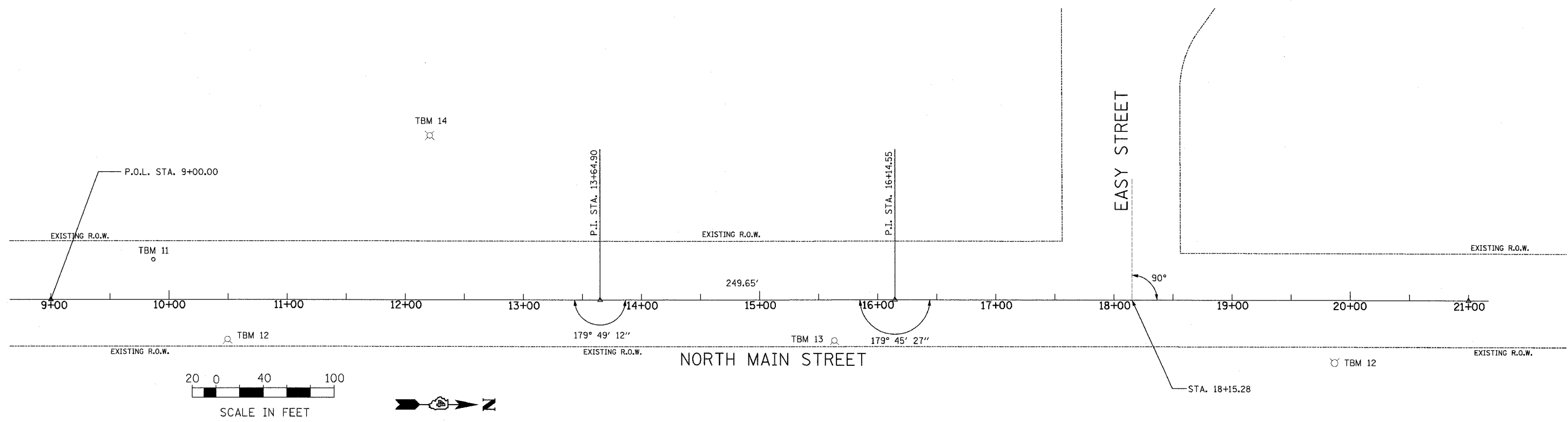
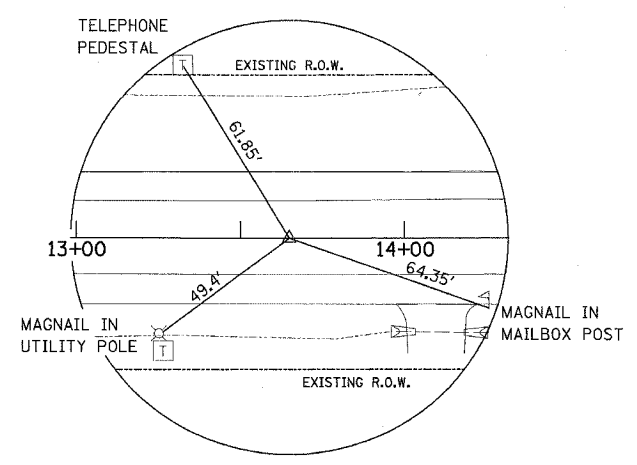


BENCHMARKS				
BENCHMARK	DESCRIPTION	ELEVATION	STATION	OFFSET
TBM 11	IRON PIN	782.57	9+86.7	34.2' LT.
TBM 12	CHISELED "X" ON NORTH CAP BOLT OF FIRE HYDRANT	781.31	10+50	34' RT.
TBM 13	CHISELED "X" ON NORTH CAP BOLT OF FIRE HYDRANT	782.35	15+64	34' RT.
TBM 14	CHISELED "□" ON SOUTHEAST LIGHT POLE AT MIDDLE SCHOOL	782.85	12+21	139' LT.

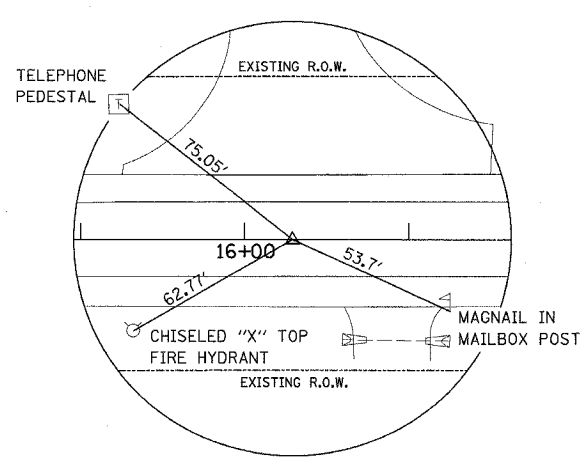
STATUS OF UTILITIES					
STATION	OFFSET	OWNER	TYPE OF UTILITY	TYPE OF CONFLICT	DISPOSITION
9+00 TO 17+50	50' TO 55' LT.	VERIZON	TELEPHONE	EARTH EXCAVATION	CAUTION
15+60	LT. AND RT.	CITY OF WASHINGTON	WATER	EARTH EXCAVATION	CAUTION
15+70	LT. AND RT.	AMEREN CILCO	GAS	EARTH EXCAVATION	CAUTION
17+60	LT. AND RT.	McLEOD	CABLE	WIDENING	CAUTION
18+50	LT. AND RT.	CITY OF WASHINGTON	WATER	WIDENING	CAUTION



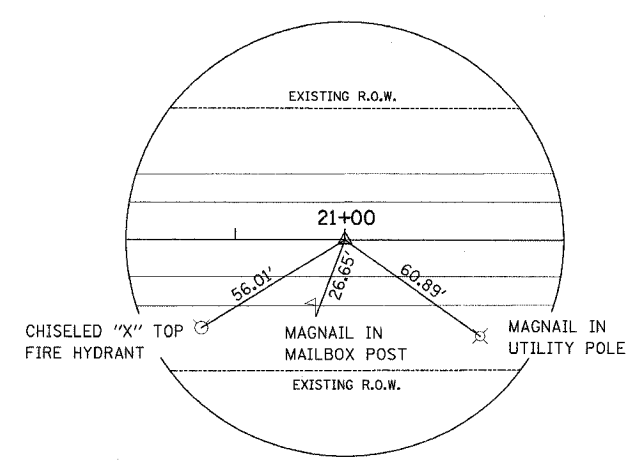
MAGNAIL  
P.O.L. STA. 9+00.00  
N. = 4140.04'  
E. = 5817.23'



MAGNAIL  
P.I. STA. 13+64.90  
N. = 4604.93  
E. = 5820.85



MAGNAIL  
P.I. STA. 16+14.55  
N. = 4854.57  
E. = 5822.01



MAGNAIL  
P.O.L. STA. 21+00.00  
N. = 5340.00  
E. = 5826.32