

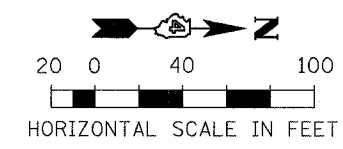
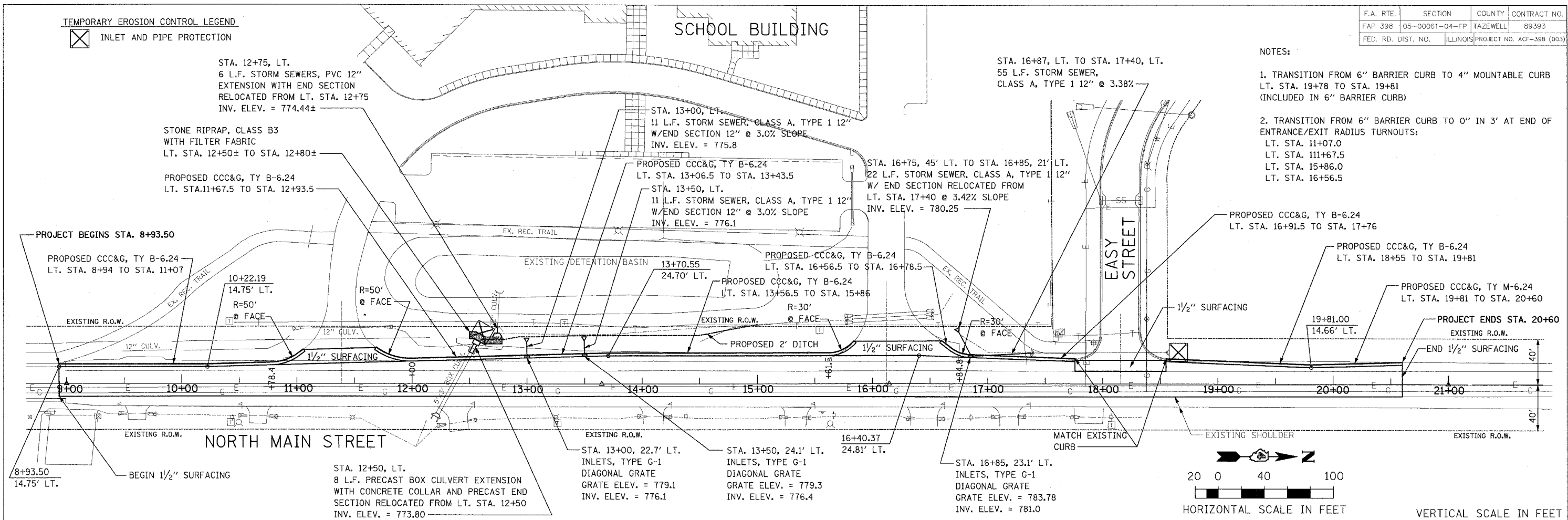
TEMPORARY EROSION CONTROL LEGEND

☒ INLET AND PIPE PROTECTION

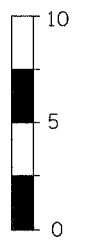
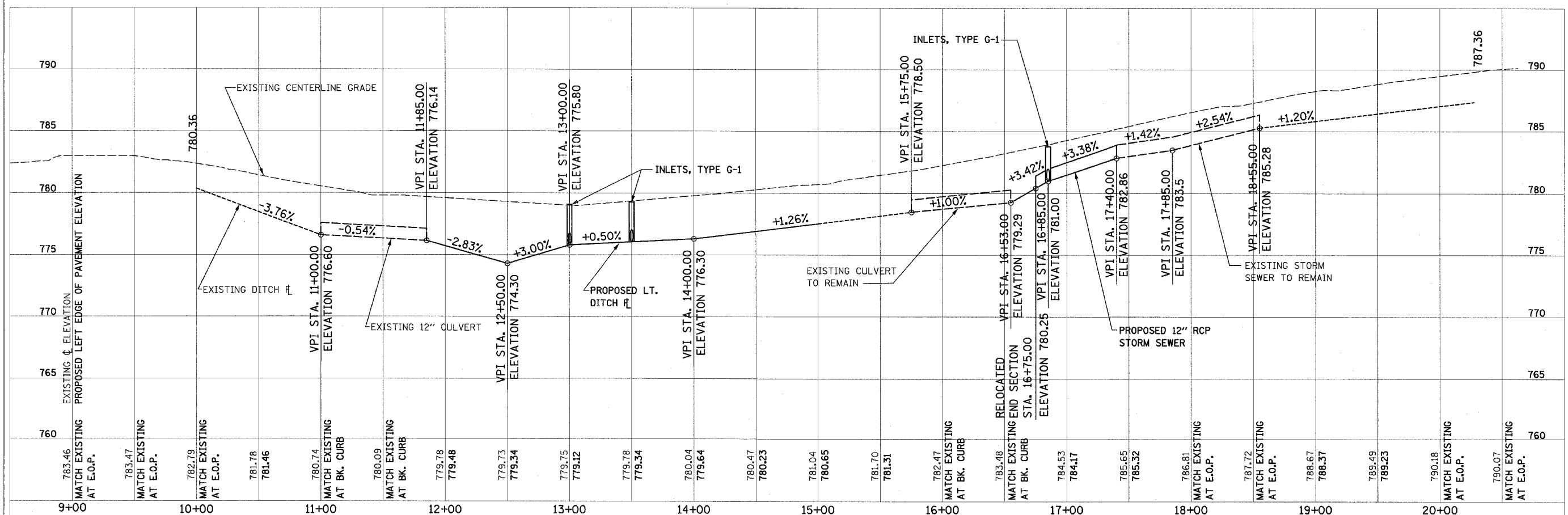
F.A. RTE.	SECTION	COUNTY	CONTRACT NO.
FAP 398	05-00061-04-FP	TAZEWELL	89393
FED. RD. DIST. NO.	ILLINOIS PROJECT NO.	ACF-398 (003)	

NOTES:

- TRANSITION FROM 6" BARRIER CURB TO 4" MOUNTABLE CURB
LT. STA. 19+78 TO STA. 19+81
(INCLUDED IN 6" BARRIER CURB)
- TRANSITION FROM 6" BARRIER CURB TO 0" IN 3' AT END OF ENTRANCE/EXIT RADIUS TURNOUTS:
LT. STA. 11+07.0
LT. STA. 111+67.5
LT. STA. 15+86.0
LT. STA. 16+56.5



VERTICAL SCALE IN FEET



BTS CONSULTANTS
 111 NE Jefferson Ave.
 Peoria, Illinois 61602
 PH: (309) 678-8464
 FAX: (309) 678-8445
 IL Design Firm Reg. No. 184-001518

NORTH MAIN STREET IMPROVEMENT

ROADWAY AND DRAINAGE
 PLAN AND PROFILE

SURVEY	CHECKED	ISSUE DATE
DESIGN	APPROVED	PRELIM. DATE
DRAWN	DLC	PROJECT NO.
		ILSD0003

SHEET
8
 OF
20

REVISED 03-10-06