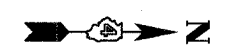
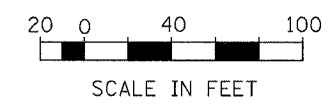


- ① 4" WHITE, PAINT
- ② 4" DOUBLE YELLOW, PAINT
- ③ 12" DIAGONAL YELLOW, PAINT @ 20' CENTERS
- ④ 8" WHITE, PAINT
- ⑤ LETTERS AND SYMBOLS, PAINT



SHEET  
OF  
20  
9

**ST CONSULTANTS**  
111 NE Jefferson Ave.  
Peoria, Illinois 61602  
PH: (309) 675-8484  
FAX: (309) 675-9445  
IL Design Firm Reg. No. 184-001518

**NORTH MAIN STREET IMPROVEMENT**

**PAVEMENT MARKING**

SURVEY	CHECKED	ISSUE DATE
DESIGN	APPROVED	PRELIM. DATE
DRAWN	DLC	PROJECT NO.
		ILSD0003