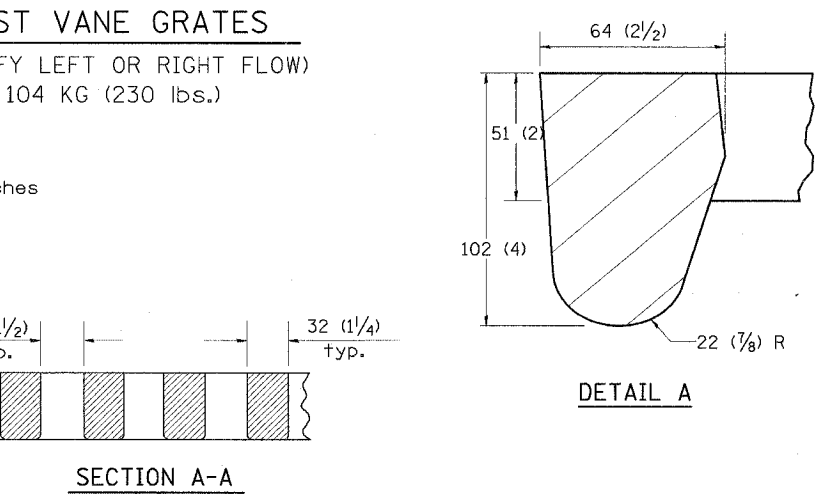
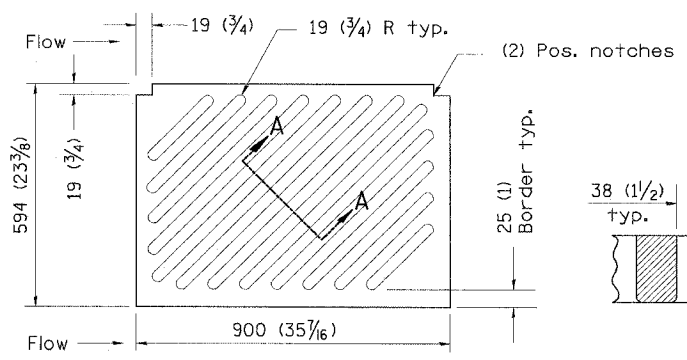
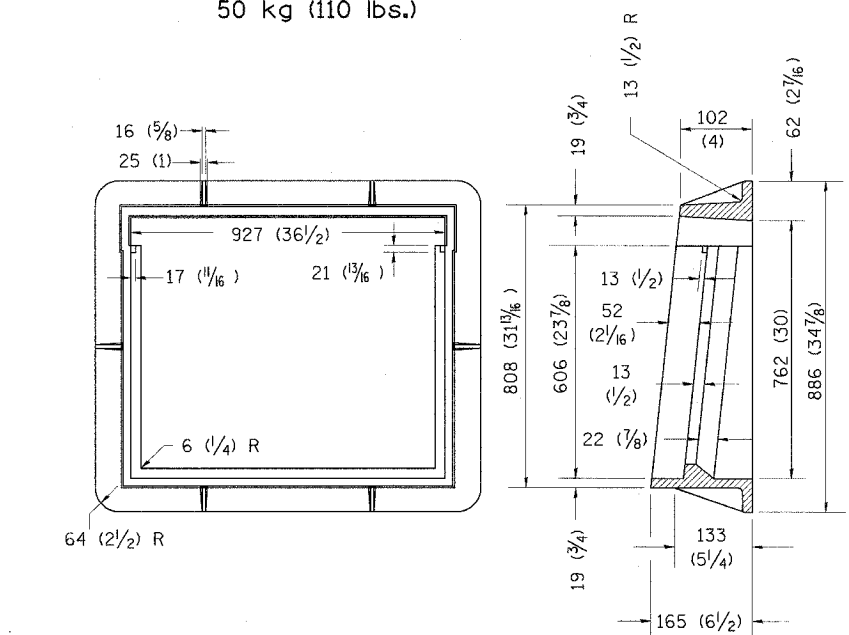
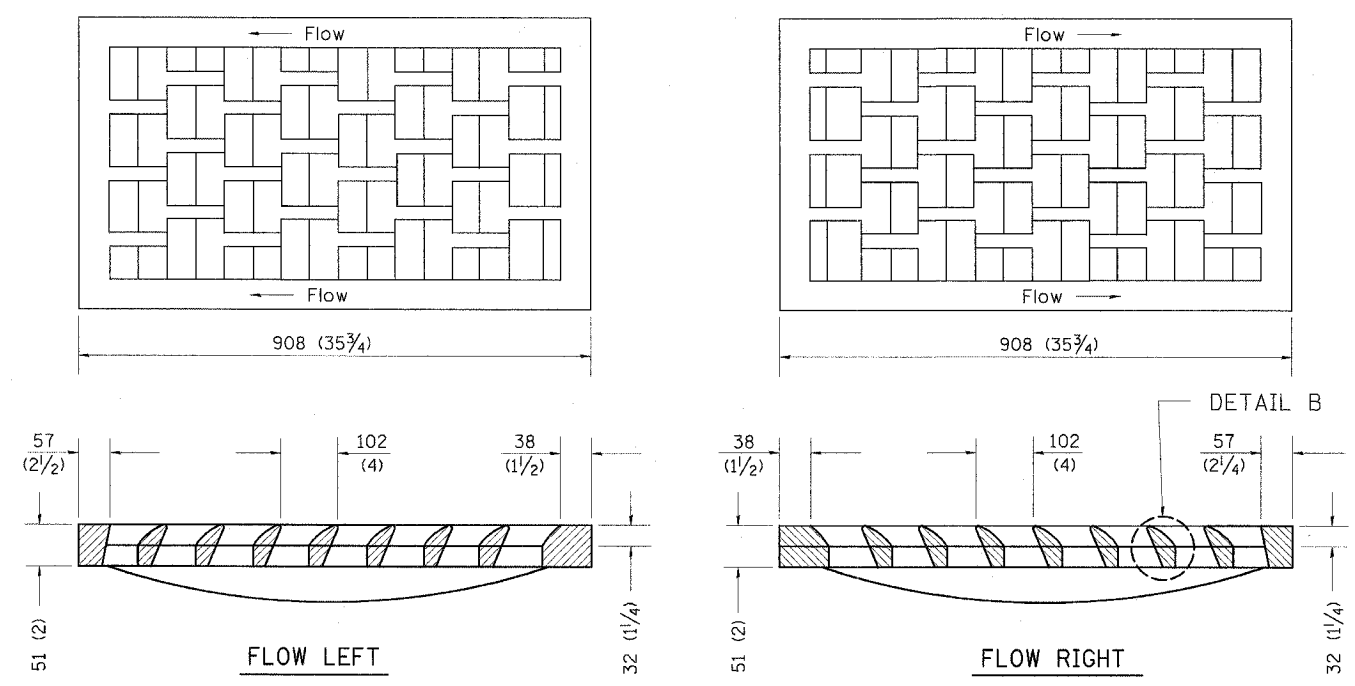
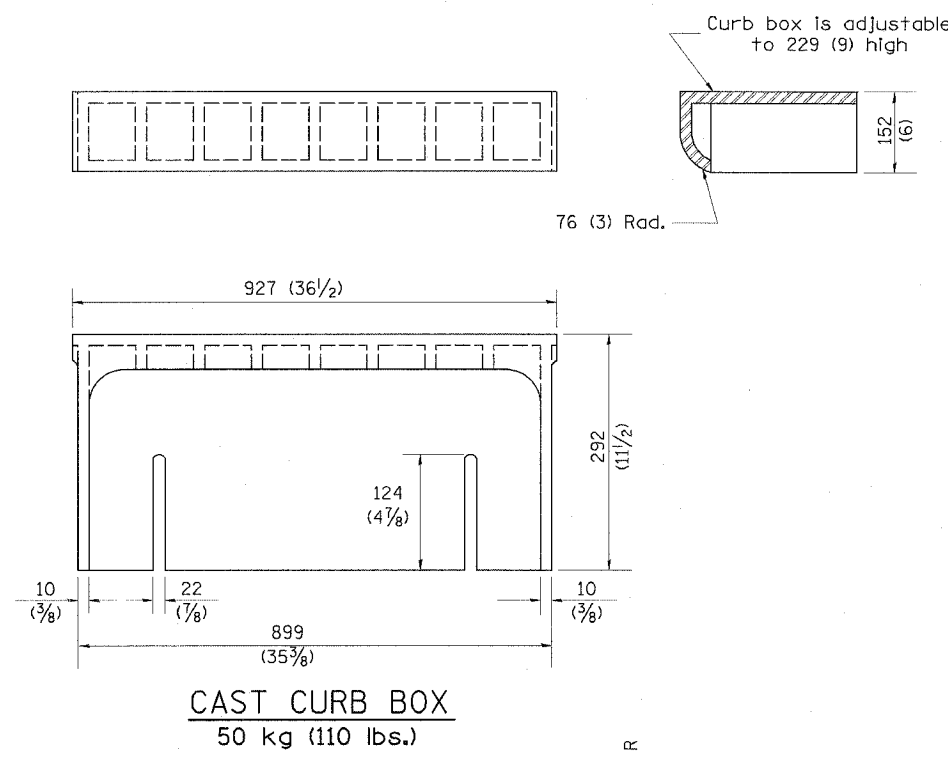


F.A.U. NO.	SECTION	COUNTY	TOTAL SHEETS	SHEET NO.
6734	05-00061-04-FP	TAZEWELL	20	188
STA.	TO STA.			
FED. ROAD DIST. NO.	ILLINOIS	FED. AID PROJECT		

DESIGNER NOTES:
 1. Include this standard with all Type G-1 and Type G-1, Special Drainage Structures.
 2. Specify grate types and flow directions in plans.
 3. These castings are included in the cost of the drainage structures as per District Special Provision.
 4. This drawing based upon "NEENAH" designs as follows: Inlet Frame: R-3246-A, Curb Box: R-3290
 Reversible Diagonal Grate: R-3246-A
 Vane Grates: R-3246-AL (flow left)
 R-3246-AL (flow right)



GENERAL NOTES

- The frame and grate shown on this drawing are for use with all TYPE G-1 and TYPE G-1, SPECIAL DRAINAGE STRUCTURES. See plans for grate type and flow direction.
- Flow direction: As viewed from street side.
- Material: cast gray iron.

DATE	REVISIONS	BY
1-1-97	RENUM. B-10.01, NEW REVISION BOX	T.P.

All dimensions are in millimeters (inches) unless otherwise noted.
 ILLINOIS DEPARTMENT OF TRANSPORTATION
 DISTRICT CADD STANDARD
 FRAME AND GRATES FOR
 TYPE G-1 AND TYPE G-1, SPECIAL
 DRAINAGE STRUCTURES
 CADD STANDARD 604001-D4
 SCALE NOT TO SCALE
 DATE **DATE**
 DRAWN BY CADD
 CHECKED BY