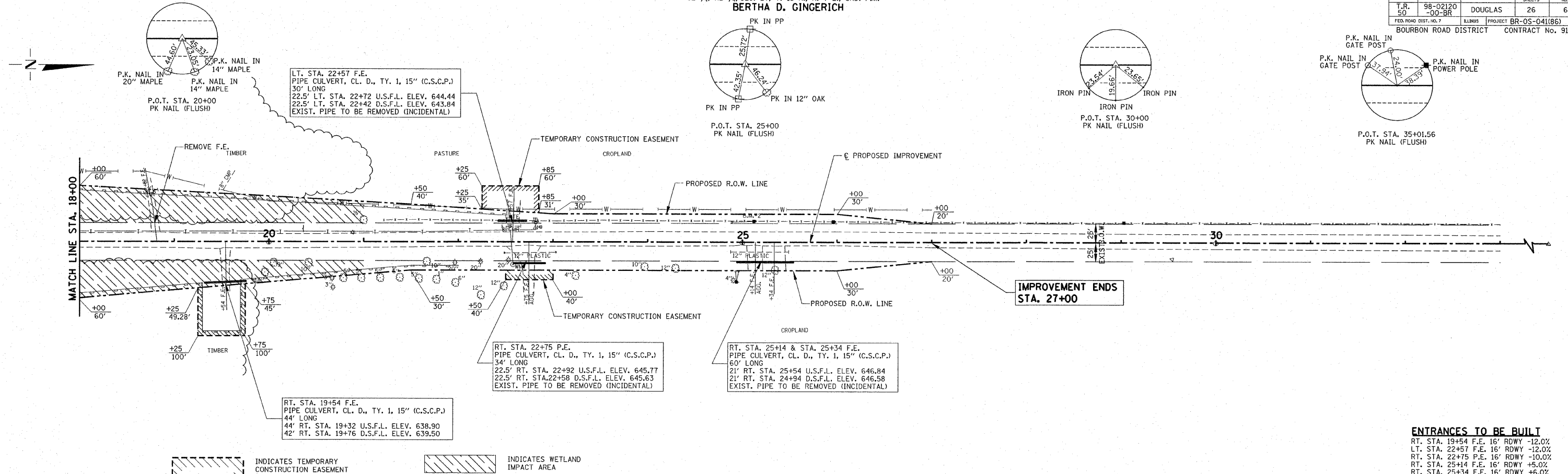


SE 1/4, NE 1/4, SEC. 27, T. 15 N., R. 7 E., 3RD. P.M.  
**BERTHA D. GINGERICH**

ROUTE NO.	SECTION	COUNTY	SHEET NO.	TOTAL SHEETS
50	98-02120-00-BR	DOUGLAS	26	6
FED. ROAD DIST. NO. 7		ILLINOIS PROJECT	BR-05-041(86)	
		BOURBON ROAD DISTRICT		CONTRACT No. 91314



**ENTRANCES TO BE BUILT**  
 RT. STA. 19+54 F.E. 16' RDWY -12.0%  
 LT. STA. 22+57 F.E. 16' RDWY -12.0%  
 RT. STA. 22+75 P.E. 16' RDWY -10.0%  
 RT. STA. 25+14 F.E. 16' RDWY +5.0%  
 RT. STA. 25+34 F.E. 16' RDWY +6.0%  
 QUANTITIES INCLUDED IN THOSE LISTED

**DANNY DIENER**  
 SW 1/4, NW 1/4, SEC. 26, T. 15 N., R. 7 E., 3RD. P.M.

