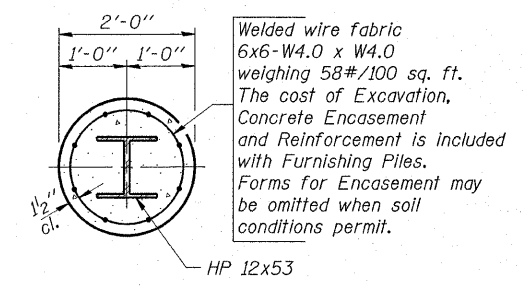


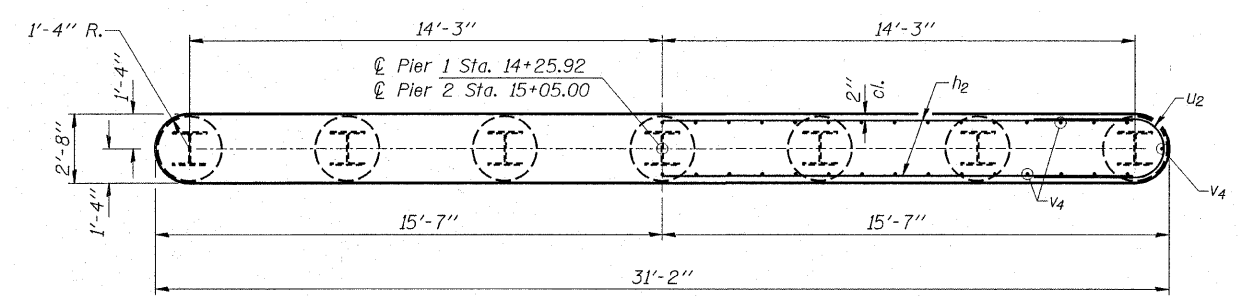
SECTION A-A



SECTION C-C

BILL OF MATERIAL - PIER 1 & 2

BAR	NO.	SIZE	LENGTH	SHAPE
h2	68	#5	28'-6"	
p	18	#7	31'-9"	
s1	64	#5	10'-7"	□
u1	16	#6	12'-8"	U
u2	68	#5	9'-8"	U
v3	120	#5	18'-6"	
Concrete Structures			Cu. Yd.	120.7
Reinforcement Bars			Lbs.	7,200
Steel Piles HP 12x53			Foot	560
Underwater Struct. Excavation Protection - L1			Each	1
Underwater Struct. Excavation Protection - L2			Each	1



PILE DATA

Type ----- Steel Pile HP12x53
 No. Req'd. ----- 14
 Capacity ----- 70 Tons/Pile
 Estimated Lengths ----- 40 Feet/Pile

The Contractor shall temporarily support the piers until the beams are placed and dowel bars are grouted. Cost included in driving piles.

HLR
 Rice, Berry and Associates
 A Division of Hampton, Lenzini and Renwick, Inc.
 Civil & Structural Engineers
 3085 Stevenson Drive
 Suite 201
 Springfield, Illinois 62703
 217-546-3400
 P.O. Box 1036
 DuQuoin, Illinois 62832
 618-790-4637
 Account Number 12-30-0008-1
 Date: 01-05-06
 DESIGNED: S.W.M. CHECKED: T.P.L. DRAWN: D.B.

PIERS 1 AND 2
SECTION 98-02120-00-BR
BOURBON ROAD DISTRICT
DOUGLAS COUNTY
STATION 15+05