

CONTRACT NO. 91337
 Total Sheets 12 Sheet No. 1

CITY OF URBANA
 PUBLIC WORKS DEPARTMENT
 ENGINEERING DIVISION

PREPARED BY:
Joseph L. Smith 2-21-06
 Senior Civil Engineer Date

REVIEWED:
William R. Bray 2/21/06
 Public Works Director/City Engineer Date



Illinois Department of Transportation
 DIVISION OF HIGHWAYS

PASSED: 2/27 2006
David H. Spill
 District Five Engineer of Local Roads & Streets

Releasing for Bid Based on Limited Review: Feb 28 2006
Joseph E. Crowe
 Deputy Director of Highways
 Region Three Engineer

JULIE, INC.
 The Illinois One-Call System
 1 (800) 892-0123

CALL JULIE TOLL FREE
 1-800-892-0123

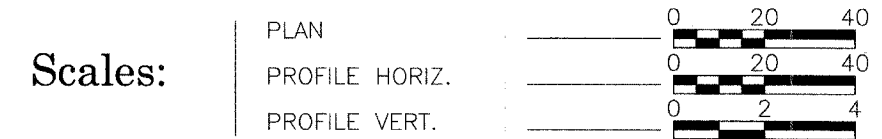
City of Urbana
**PLANS FOR PROPOSED
 FEDERAL AID HIGHWAY**
 F.A.U. Route 7177 (Lincoln Avenue)
 Project No. HS-7127(031) Job No. C-95-317-05
Lincoln Ave. & Pennsylvania Ave.
Traffic Signal Installation
 City Section 04-00396-00-TL

INDEX OF SHEETS

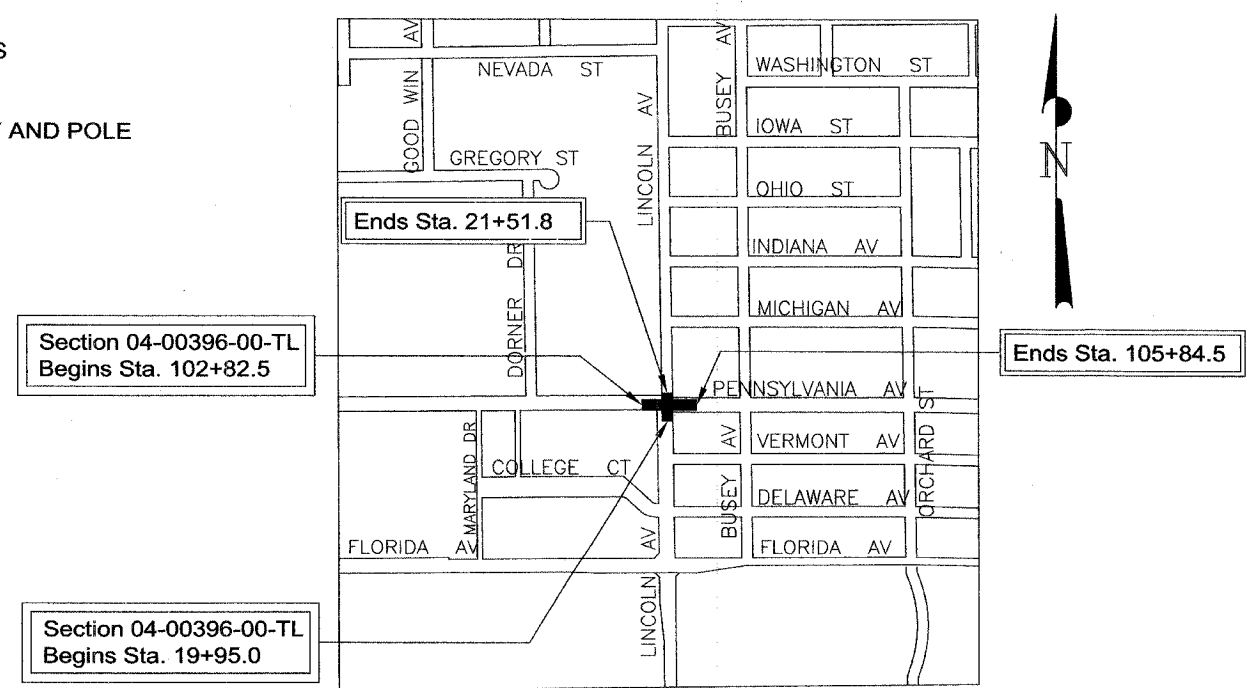
1. COVER SHEET
2. GENERAL NOTES
3. SUMMARY OF QUANTITIES
4. SCHEDULE OF QUANTITIES
5. DEMOLITION & SEWER PLAN
6. CONSTRUCTION PLAN
- 7-8. SIDEWALK CONSTRUCTION DETAILS
- 9-10. TRAFFIC SIGNAL LAYOUT PLAN
11. TRAFFIC SIGNAL CABLE DIAGRAM
12. TRAFFIC SIGNAL DETAILS
HIGHWAY STANDARDS

HIGHWAY STANDARDS

- | | |
|-----------|------------------------------------------------------------------|
| 424001-04 | CURB RAMPS FOR SIDEWALKS |
| 602301-01 | INLET - TYPE A |
| 602306-01 | INLET - TYPE B |
| 604001-02 | FRAME AND LIDS, TYPE 1 |
| 604006-02 | FRAME AND GRATE, TYPE 3 |
| 606001-02 | CONCRETE CURB TYPE B AND COMBINATION
CONCRETE CURB AND GUTTER |
| 701701-04 | URBAN LANE CLOSURE, MULTILANE INTERSECTION |
| 701801-03 | LANE CLOSURE MULTILANE 1W OR 2W CROSSWALK
OR SIDEWALK CLOSURE |
| 702001-06 | TRAFFIC CONTROL DEVICES |
| 720016-01 | MAST ARM MOUNTED STREET NAME SIGNS |
| 805001 | ELECTRICAL SERVICE INSTALLATION DETAILS |
| 813001-01 | JUNCTION BOXES |
| 814001 | CONCRETE HANDHOLES |
| 814006 | DOUBLE HANDHOLES |
| 857001 | STANDARD PHASE DESIGNATION DIAGRAMS
AND PHASE SEQUENCES |
| 873001 | TRAFFIC SIGNAL GROUNDING |
| 877011-02 | STEEL COMBINATION MAST ARM ASSEMBLY AND POLE |
| 878001-04 | CONCRETE FOUNDATION DETAILS |
| 880006 | TRAFFIC SIGNAL MOUNTING DETAILS |
| 886001 | DETECTOR LOOP INSTALLATIONS |
| 886006 | TYPICAL LAYOUTS FOR DETECTION LOOPS |



Location Map



TOTAL LENGTH OF SECTION = 458.8 FEET = 0.09 MILE
 NOT TO SCALE

TRAFFIC DATA:

LEG A (NORTH)		LEG C (WEST)	
ADT (2005) = 16000	DHV (2005) = 1500	ADT (2005) = 8000	DHV (2005) = 770
LEG B (SOUTH)		LEG D (EAST)	
ADT (2005) = 15300	DHV (2005) = 1515	ADT (2005) = 4300	DHV (2005) = 360