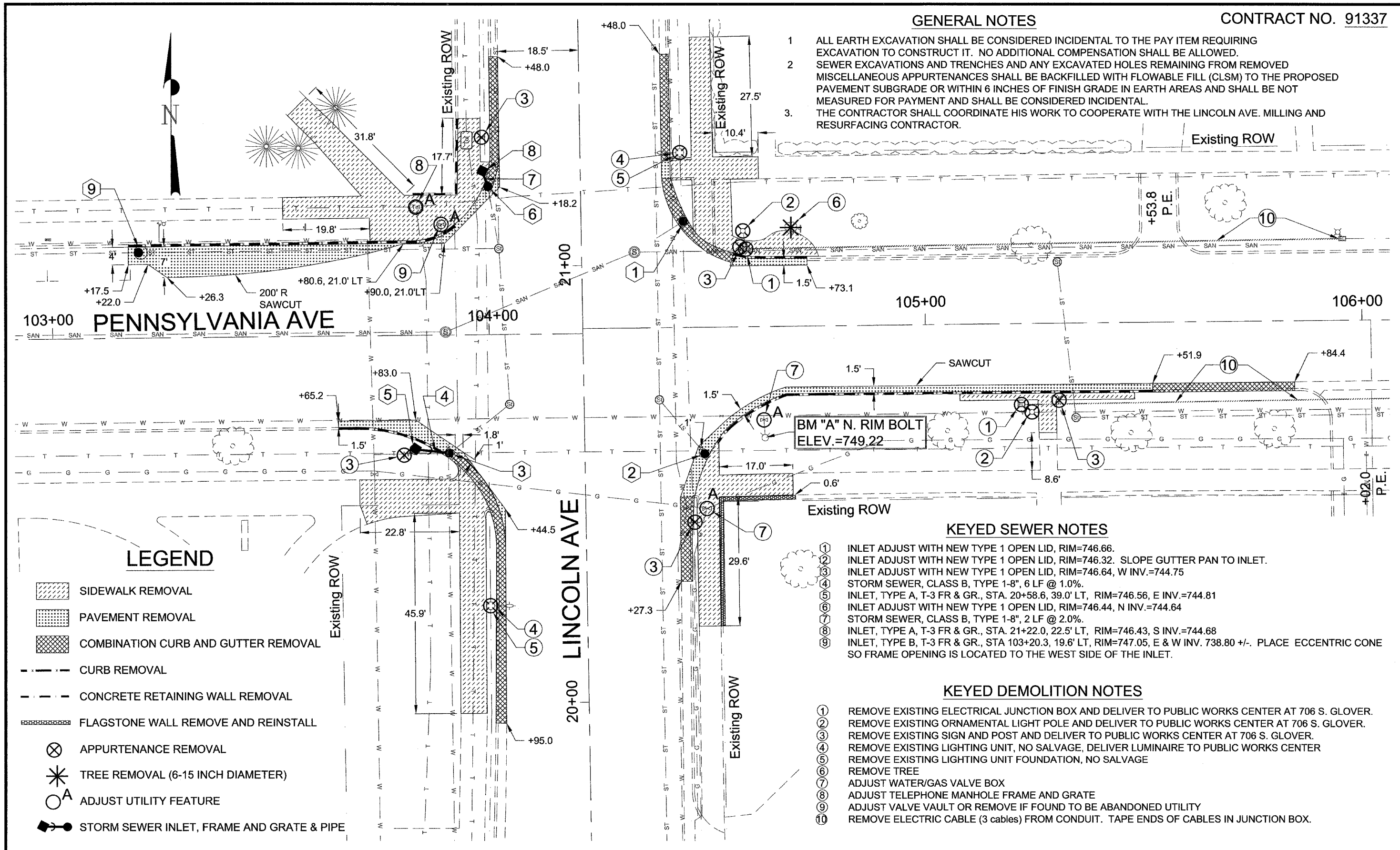


GENERAL NOTES

- 1 ALL EARTH EXCAVATION SHALL BE CONSIDERED INCIDENTAL TO THE PAY ITEM REQUIRING EXCAVATION TO CONSTRUCT IT. NO ADDITIONAL COMPENSATION SHALL BE ALLOWED.
- 2 SEWER EXCAVATIONS AND TRENCHES AND ANY EXCAVATED HOLES REMAINING FROM REMOVED MISCELLANEOUS APPURTENANCES SHALL BE BACKFILLED WITH FLOWABLE FILL (CLSM) TO THE PROPOSED PAVEMENT SUBGRADE OR WITHIN 6 INCHES OF FINISH GRADE IN EARTH AREAS AND SHALL BE NOT MEASURED FOR PAYMENT AND SHALL BE CONSIDERED INCIDENTAL.
- 3 THE CONTRACTOR SHALL COORDINATE HIS WORK TO COOPERATE WITH THE LINCOLN AVE. MILLING AND RESURFACING CONTRACTOR.



Existing ROW

+53.8 P.E.

105+00

106+00

BM "A" N. RIM BOLT  
ELEV.=749.22

+02.0 P.E.

LEGEND

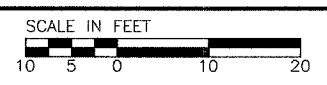
- SIDEWALK REMOVAL
- PAVEMENT REMOVAL
- COMBINATION CURB AND GUTTER REMOVAL
- CURB REMOVAL
- CONCRETE RETAINING WALL REMOVAL
- FLAGSTONE WALL REMOVE AND REINSTALL
- APPURTENANCE REMOVAL
- TREE REMOVAL (6-15 INCH DIAMETER)
- ADJUST UTILITY FEATURE
- STORM SEWER INLET, FRAME AND GRATE & PIPE

KEYED SEWER NOTES

- 1 INLET ADJUST WITH NEW TYPE 1 OPEN LID, RIM=746.66.
- 2 INLET ADJUST WITH NEW TYPE 1 OPEN LID, RIM=746.32. SLOPE GUTTER PAN TO INLET.
- 3 INLET ADJUST WITH NEW TYPE 1 OPEN LID, RIM=746.64, W INV.=744.75
- 4 STORM SEWER, CLASS B, TYPE 1-8", 6 LF @ 1.0%.
- 5 INLET, TYPE A, T-3 FR & GR., STA. 20+58.6, 39.0' LT, RIM=746.56, E INV.=744.81
- 6 INLET ADJUST WITH NEW TYPE 1 OPEN LID, RIM=746.44, N INV.=744.64
- 7 STORM SEWER, CLASS B, TYPE 1-8", 2 LF @ 2.0%.
- 8 INLET, TYPE A, T-3 FR & GR., STA. 21+22.0, 22.5' LT, RIM=746.43, S INV.=744.68
- 9 INLET, TYPE B, T-3 FR & GR., STA 103+20.3, 19.6' LT, RIM=747.05, E & W INV. 738.80 +/- PLACE ECCENTRIC CONE SO FRAME OPENING IS LOCATED TO THE WEST SIDE OF THE INLET.

KEYED DEMOLITION NOTES

- 1 REMOVE EXISTING ELECTRICAL JUNCTION BOX AND DELIVER TO PUBLIC WORKS CENTER AT 706 S. GLOVER.
- 2 REMOVE EXISTING ORNAMENTAL LIGHT POLE AND DELIVER TO PUBLIC WORKS CENTER AT 706 S. GLOVER.
- 3 REMOVE EXISTING SIGN AND POST AND DELIVER TO PUBLIC WORKS CENTER AT 706 S. GLOVER.
- 4 REMOVE EXISTING LIGHTING UNIT, NO SALVAGE, DELIVER LUMINAIRE TO PUBLIC WORKS CENTER
- 5 REMOVE EXISTING LIGHTING UNIT FOUNDATION, NO SALVAGE
- 6 REMOVE TREE
- 7 ADJUST WATER/GAS VALVE BOX
- 8 ADJUST TELEPHONE MANHOLE FRAME AND GRATE
- 9 ADJUST VALVE VAULT OR REMOVE IF FOUND TO BE ABANDONED UTILITY
- 10 REMOVE ELECTRIC CABLE (3 cables) FROM CONDUIT. TAPE ENDS OF CABLES IN JUNCTION BOX.



LINCOLN-PENNSYLVANIA TRAFFIC SIGNAL INSTALLATION  
City Section 04-00396-00-TL

Design/ACAD by: JLS	DEMOLITION & SEWER PLAN	TOTAL SHEETS	SHEET NO.
Approved by: WRG		12	5
Date: 12/30/05		H:\jlsmith\LINCPENNSIGNAL\LincolnPenn5Demo.dwg	