



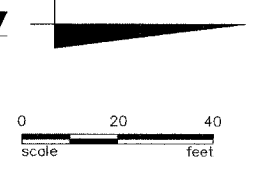
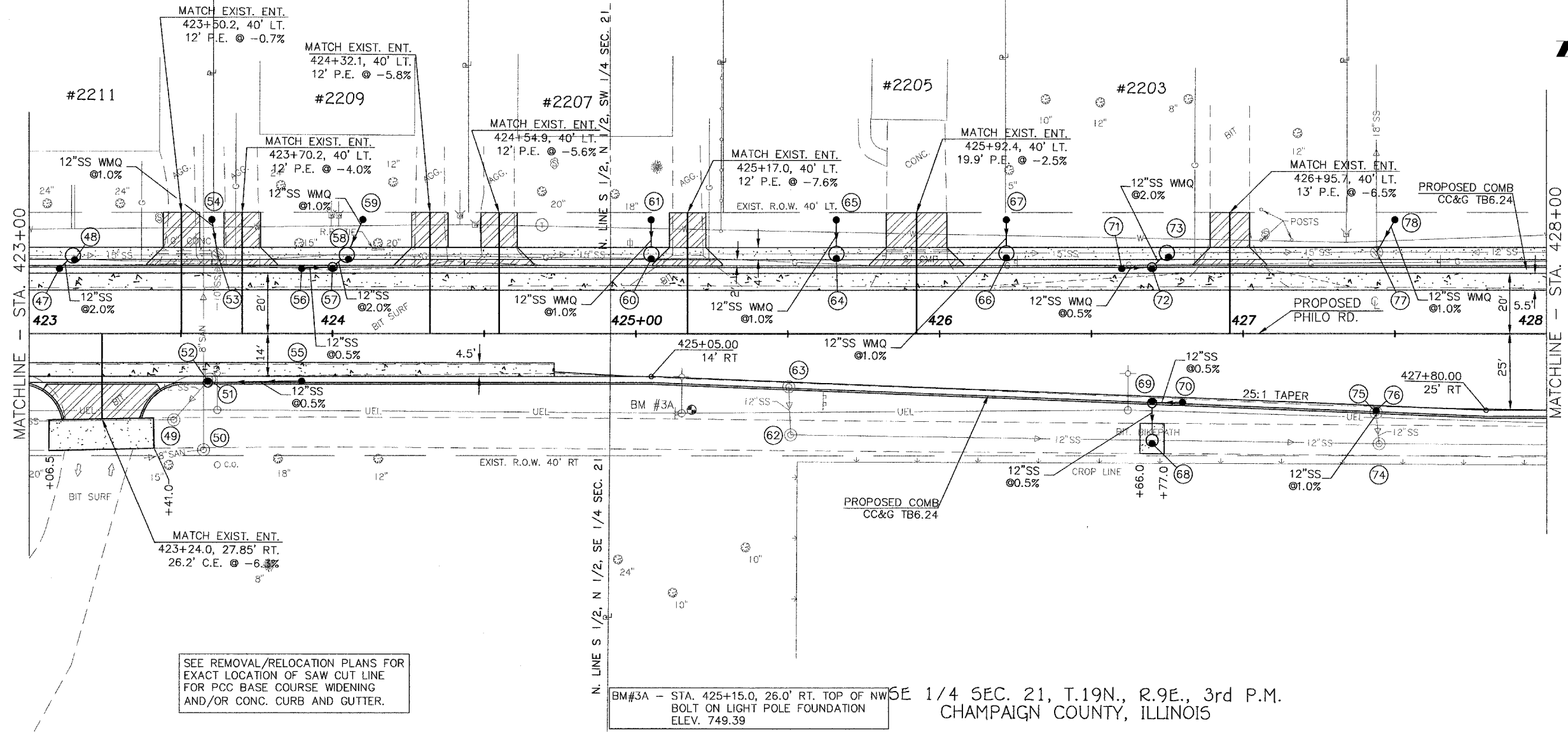
CITY OF URBANA
PUBLIC WORKS
ENGINEERING DIVISION

DRAWN BY: AUS
CHECKED BY: GLJ
DESIGNED BY: CES
CITY SECTION
95-00305-01-PV

Philo Road Improvement
Plan & Profile
Sta 423+00 to Sta 428+00

SHEET NO.
30
OF
62

SW 1/4 SEC. 21, T.19N., R.9E., 3rd P.M.
CHAMPAIGN COUNTY, ILLINOIS



SEE REMOVAL/RELOCATION PLANS FOR EXACT LOCATION OF SAW CUT LINE FOR PCC BASE COURSE WIDENING AND/OR CONC. CURB AND GUTTER.

- LEGEND**
- DETECTABLE WARNINGS
 - PCC BASE COURSE WIDENING
 - PCC SIDEWALK
 - PCC DRIVEWAY PAVEMENT
 - DRAINAGE STRUCTURE NO. (SEE DRAINAGE SCHEDULES)

