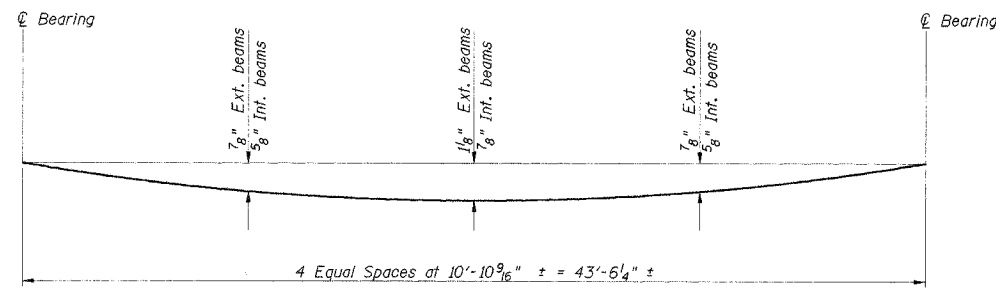
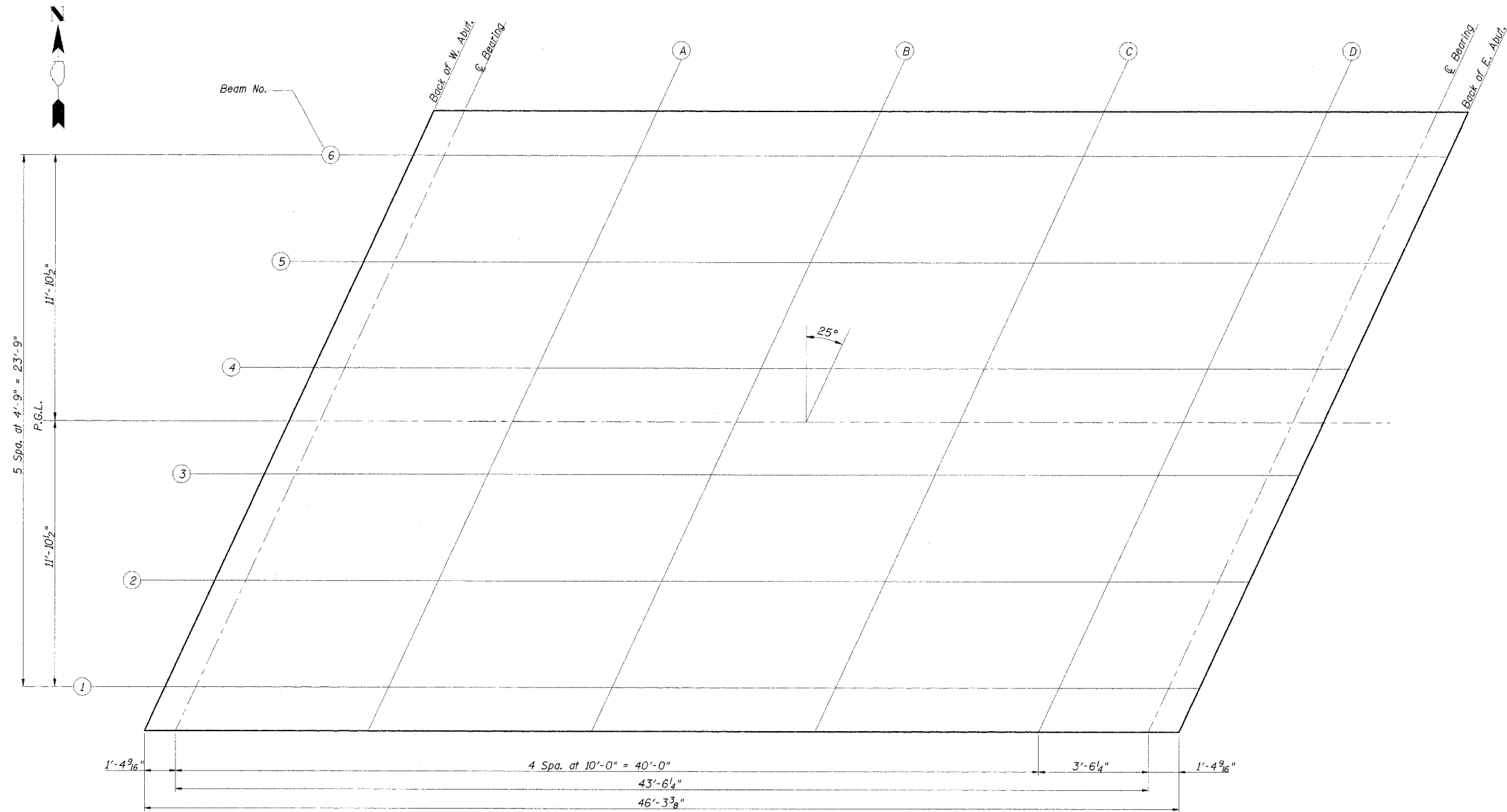


ROUTE NO.	SECTION	COUNTY	TOTAL SHEETS	SHEET NO.
TR 373	*	Vermilion	19	9
FED. HIGHWAY DIST. NO.	FILE NO.	FED. HIGHWAY PROJECT		

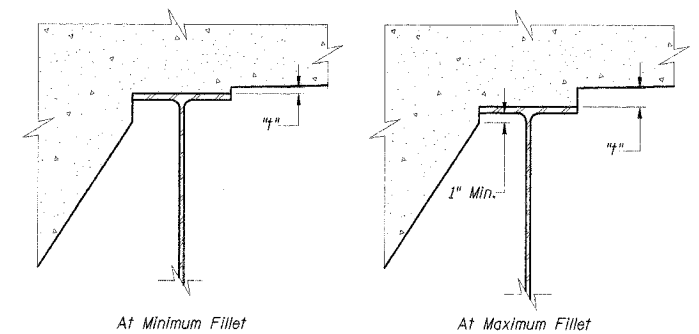
*02-04130-00-BR



DEAD LOAD DEFLECTION DIAGRAM

(Includes weight of Steel beams & concrete only)

Note: The above deflections are not to be used in the field if the engineer is working from the grade elevations adjusted for Dead Load deflections as shown on sheet 10 of 19.



FILLET HEIGHTS

To determine "f": After all structural steel has been erected, elevations of the top flanges of the beams shall be taken at intervals shown on this sheet. These elevations subtracted from the "Theoretical Grade Elevations Adjusted for Dead Load Deflection" shown below, minus slab thickness, equals the fillet heights "f" above top flange of beams.

DSGN	K.J. Hoffmann					
DR	K.J. Hoffmann					
CHK	K.E. Brandau					
APVD	K.E. Brandau	NO.	DATE	REVISION	BY	APVD

FRAUENHÖFFER

Frauenhoffer and Associates, P.C. Consulting Engineers
3002 Crossing Court Champaign, IL 61822 217-351-6268

TOP OF SLAB ELEVATIONS - SHEET 1 OF 2

CATLIN ROAD DISTRICT
SECTION 02-04130-00-BR
VERMILION COUNTY

SHEET	9
DWG NO.	5068-tos1.dgn
DATE	FEB 2006
PROJ NO.	5068