

ROUTE NO.	SECTION	COUNTY	TOTAL SHEETS	SHEET NO.
TR 261	*	Vermilion	10	1
REC. ROAD DIST. NO. 7		ILLINOIS	FED. AID PROJECT	

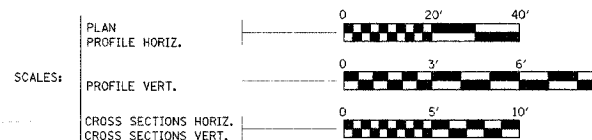
\*94-14129-00-BR

INDEX OF SHEETS

SHEET NO.	DESCRIPTION
1	COVER SHEET
2	SUMMARY OF QUANTITIES, TYPICAL CROSS SECTIONS, & SCHEDULE OF QUANTITIES
3	PLAN AND PROFILE
4	ROADWAY ALIGNMENT AND TIE POINTS
5 - 8	BRIDGE PLANS
9 - 10	CROSS SECTIONS

STATE OF ILLINOIS  
DEPARTMENT OF TRANSPORTATION

PLANS FOR PROPOSED  
BRIDGE REPLACEMENT

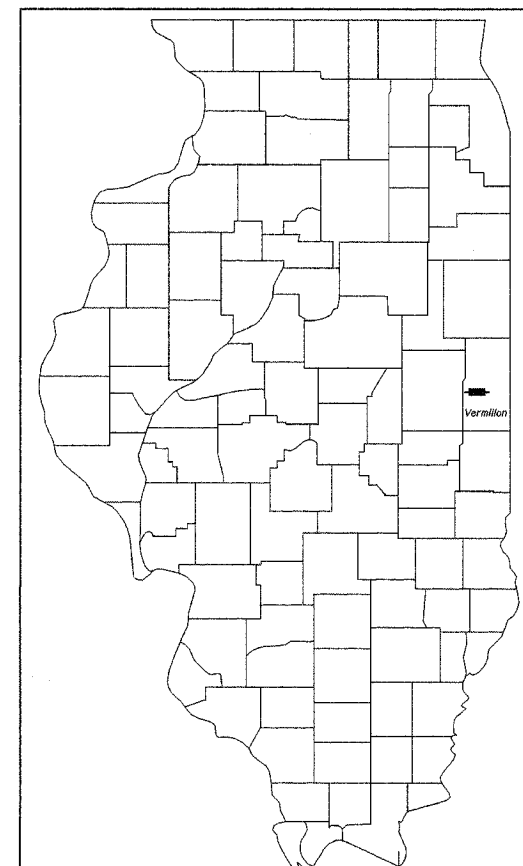


VERMILION COUNTY  
OAKWOOD ROAD DISTRICT  
SECTION 94-14129-00-BR  
STRUCTURE NO. 092-3456  
TR 261  
BRIDGE REPLACEMENT AND  
REHABILITATION PROGRAM  
PROJECT NO. BROS-183(91)  
JOB NO. C-95-335-05

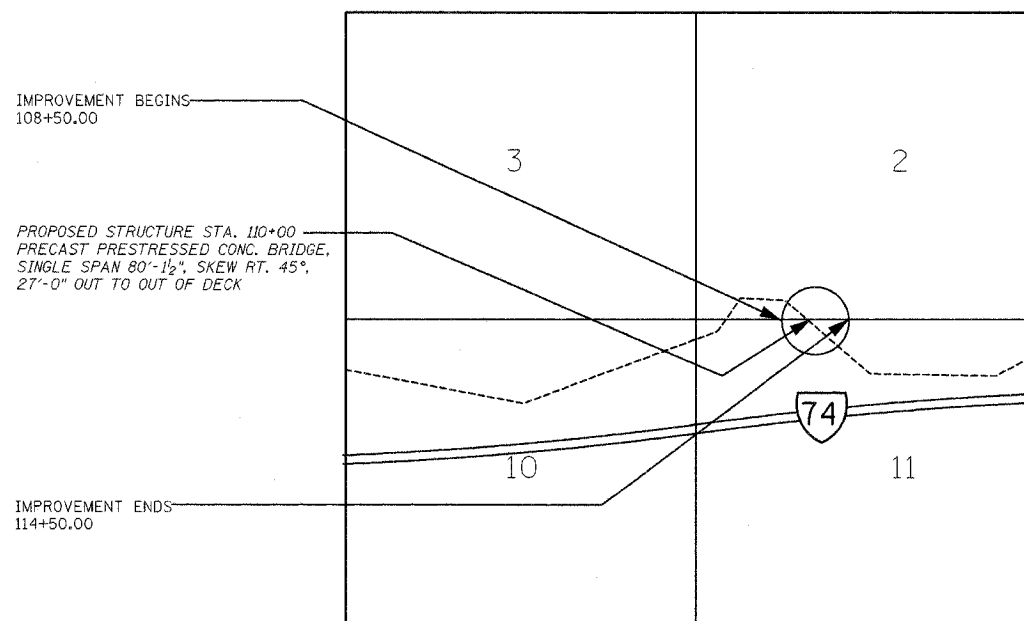
R 14 W, 2nd P.M.

ILLINOIS DEPT. OF TRANSPORTATION STANDARD DRAWINGS

STANDARD NO.	DESCRIPTION
515001-02	NAME PLATE FOR BRIDGES
701006-02	OFF-ROAD OPERATIONS, 2L, 2W, 4.5 M (15') TO TO 600 MM (24") FROM PAVEMENT EDGE
702001-06	TRAFFIC CONTROL DEVICES
BLR 21-6	TYPICAL APPLICATION OF TRAFFIC CONTROL DEVICES FOR CONSTRUCTION ON RURAL LOCAL HIGHWAYS



LOCATION OF SECTION INDICATED THUS: [Symbol]



LOCATION MAP

NET LENGTH OF SECTION = 600 FEET = 0.114 MILES

FOR JOINT UTILITY INFORMATION  
CALL TOLL FREE 1-800-892-0123



*Keith E. Brandau* 1/30/06  
KEITH E. BRANDAU  
Illinois Licensed Professional Engineer Number 44096  
License Expires 11/30/07

APPROVED 2/13/06 \_\_\_\_\_ 20  
*Robert B. Andrews*  
COUNTY ENGINEER

APPROVED \_\_\_\_\_ 2-3-2006  
*Gregory S. Hays*  
ROAD COMMISSIONER

PASSED \_\_\_\_\_ 2/27 2006  
*David H. [Signature]*  
DISTRICT FIVE ENGINEER OF  
LOCAL ROADS & STREETS

Releasing For  
Bid Based on  
Limited Review \_\_\_\_\_ Feb 28 2006  
*John E. [Signature]*  
DEPUTY DIRECTOR OF HIGHWAYS,  
REGION THREE ENGINEER  
STATE OF ILLINOIS  
DEPARTMENT OF TRANSPORTATION

**FRAUENHÖFFER**

Frauenhoffer and Associates, P.C. Consulting Engineers  
3002 Crossing Court Champaign, Il. 61822 217-351-6268

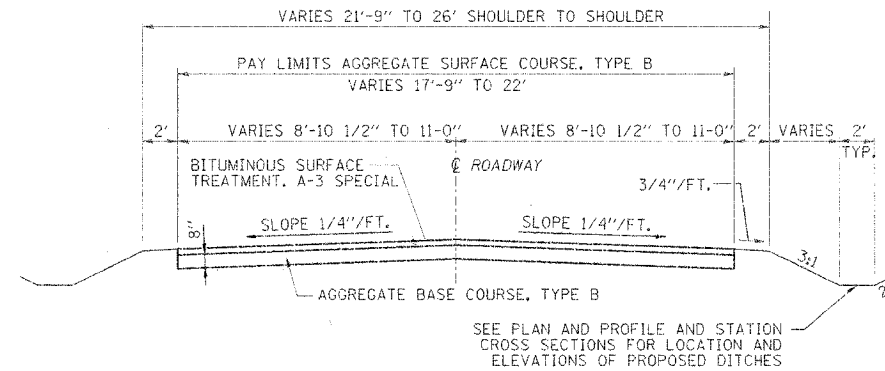
ROUTE NO.	SECTION	COUNTY	SHEET	TOTAL
TR 261	*	Vermilion	10	2

\*94-14129-00-BR

**SUMMARY OF QUANTITIES**

CODE NO.	ITEM	UNIT	QUANTITY
*20200100	EARTH EXCAVATION	CU. YD.	286
20400800	FURNISHED EXCAVATION	CU. YD.	208
25000200	SEEDING, CLASS 2	ACRE	0.4
25100115	MULCH, METHOD 2	ACRE	0.4
*35102000	AGGREGATE BASE COURSE, TYPE B, 8"	SO. YD.	1220
*40200800	AGGREGATE SURFACE COURSE, TYPE B	TON	92
*50100100	REMOVAL OF EXISTING STRUCTURES	EACH	1
50200100	STRUCTURE EXCAVATION	CU. YD.	165
50300225	CONCRETE STRUCTURES	CU. YD.	32.2
50400605	PRECAST PRESTRESSED CONCRETE DECK BEAMS (33" DEEP)	SG. FT.	2208
50800105	REINFORCEMENT BARS	POUND	3380
50900205	STEEL RAILING, TYPE S-1	FOOT	164
51201400	FURNISHING STEEL PILES, HP 10 X 42	FOOT	462
51202700	DRIVING STEEL PILES	FOOT	462
51203400	TEST PILES, STEEL HP 10 X 42	EACH	2
51204600	METAL SHOES	EACH	14
51500100	NAME PLATE	EACH	1
LR 631020	TRAFFIC BARRIER TERMINAL, TYPE 1	EACH	2
67100100	MOBILIZATION	L. SUM	1
*XX003952	TEMPORARY EROSION CONTROL COMPLETE	L. SUM	1
*XX004565	GROUTED RIP RAP	SO. YD.	423
*XX004566	CONCRETE CUT-OFF WALL	CU. YD.	8.5
*XX004567	PIPE CULVERTS, TYPE 1 ALUMINIZED CORRUGATED STEEL PIPE, 18" DIA.	FOOT	185
*XX005699	BITUMINOUS SURFACE TREATMENT, A-3 SPECIAL	SO. YD.	1420
Z0013798	CONSTRUCTION LAYOUT	L. SUM	1.0
*Z0013825	CONTROLLED LOW STRENGTH MATERIAL	CU. YD.	60

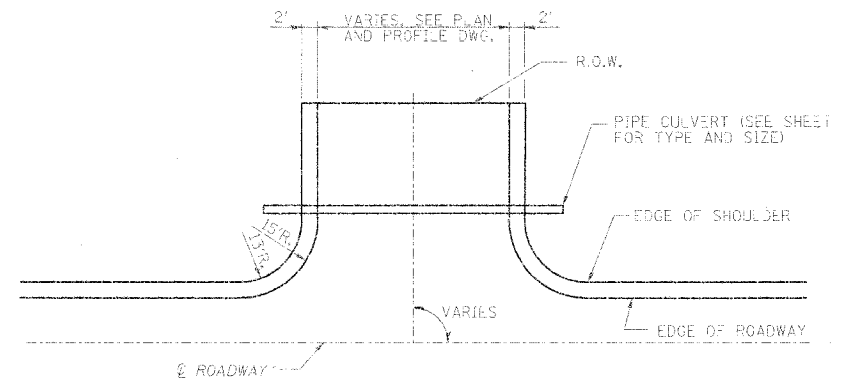
\*SEE SPECIAL PROVISIONS



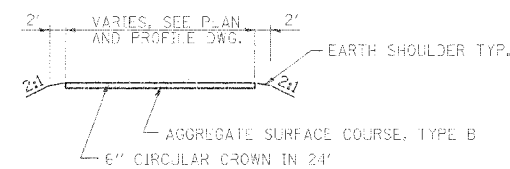
NOTES:  
 FUNCTIONAL CLASS - LOCAL ROAD (0-250 ADT)  
 CURRENT ADT = 150  
 SEE PLAN AND PROFILE SHEET 3 FOR PAVEMENT AND SHOULDER TAPERS.

**TYPICAL CROSS SECTION**

STA 108+50.00 TO STA. 109+59.11  
 STA. 110+40.89 TO STA. 114+50.00



**PLAN**



**SECTION**

**FIELD ENTRANCE DETAIL**

STA. 109 + 30 RT.  
 STA. 111 + 74 RT.  
 STA. 112 + 24 LT.  
 STA. 113 + 72 LT.

SEEDING, CLASS 2		ACRE
LOCATION		
STA 108+50 TO STA 110+00		0.38
STA 110+00 TO STA 114+50		0.32
<b>TOTAL</b>		<b>0.40</b>

MULCH, METHOD 2		ACRE
LOCATION		
STA 108+50 TO STA 110+00		0.38
STA 110+00 TO STA 114+50		0.32
<b>TOTAL</b>		<b>0.40</b>

CONSTRUCTION LAYOUT		L. SUM
LOCATION		
SEC. 94-14129-00-BR		1
<b>TOTAL</b>		<b>1</b>

PIPE CULVERTS, TYPE 1 ALUMINIZED CORRUGATED STEEL PIPE, 18" DIA		FOOT
LOCATION		
RT. STA 109+30		80
RT. STA 111+74		35
LT. STA 112+24		35
LT. STA 113+72		35
<b>TOTAL</b>		<b>185</b>

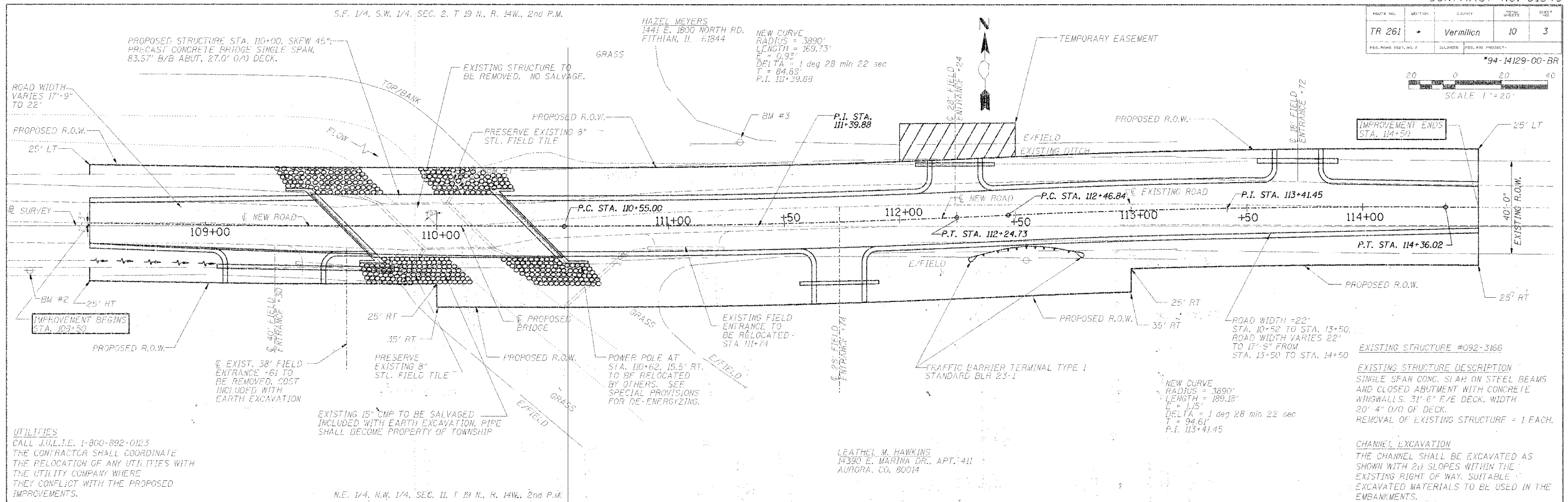
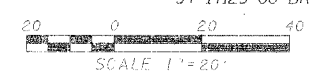
AGGREGATE BASE COURSE, TYPE B, 8"		SO. YD.
LOCATION		
STA 108+50.00 TO STA 109+59.11		243
STA 110+40.89 TO STA 114+50.00		977
<b>TOTAL</b>		<b>1220</b>

AGGREGATE SURFACE COURSE, TYPE B		TON
LOCATION		
RT. STA 109+30		25.0
RT. STA 112+24		28.0
LT. STA 112+24		28.0
LT. STA 113+72		11.0
<b>TOTAL</b>		<b>92.0</b>

TRAFFIC BARRIER TERMINAL, TYPE 1		EACH
LOCATION		
STA 112+30 TO STA 112+55		1
STA 112+55 TO STA 112+80		1
<b>TOTAL</b>		<b>2</b>

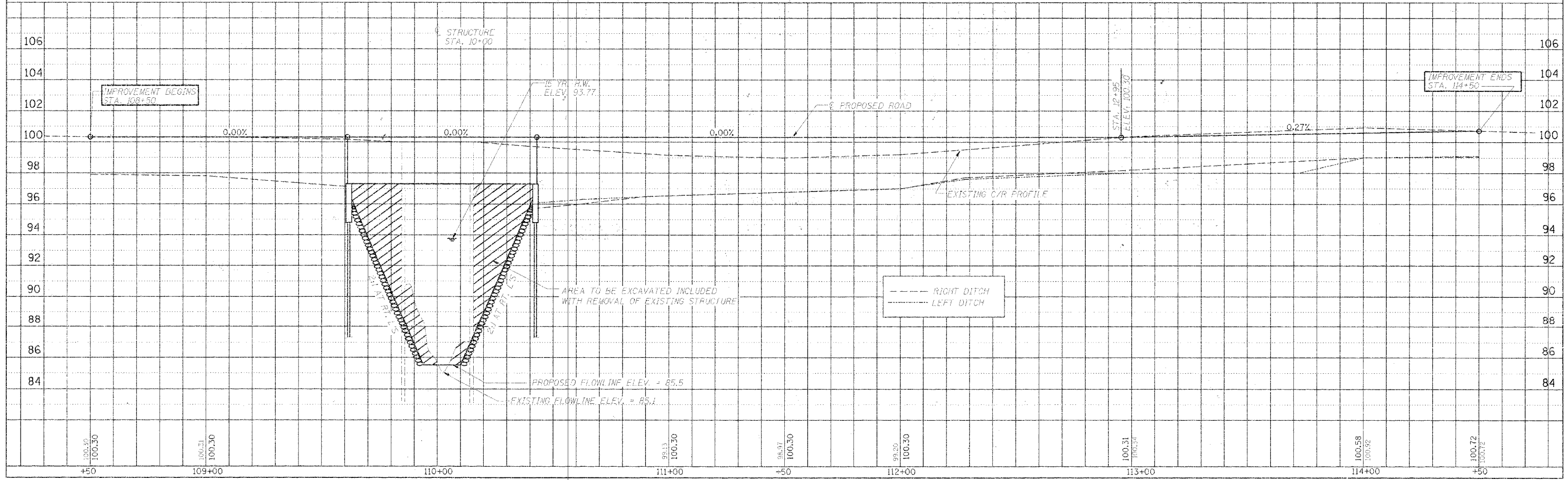
BITUMINOUS SURFACE TREATMENT, A-3 SPECIAL		SO. YD.
LOCATION		
STA 108+50 TO STA 114+50		1420
<b>TOTAL</b>		<b>1420</b>

ROUTE NO.	SECTION	COUNTY	SHEET NO.	TOTAL SHEETS
TR 261		Vermilion	10	3
FED. ROAD DIST. NO. 7		STATE PROJECT	94-14129-00-BR	



**UTILITIES**  
 CALL J.U.L.I.E. 1-800-892-0123  
 THE CONTRACTOR SHALL COORDINATE  
 THE RELOCATION OF ANY UTILITIES WITH  
 THE UTILITY COMPANY WHERE  
 THEY CONFLICT WITH THE PROPOSED  
 IMPROVEMENTS.

LEATHEL M. HAWKINS  
 14330 E. MARINA DR., APT. 411  
 AURORA, CO. 80014



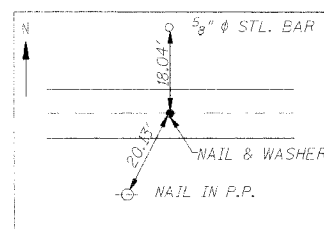
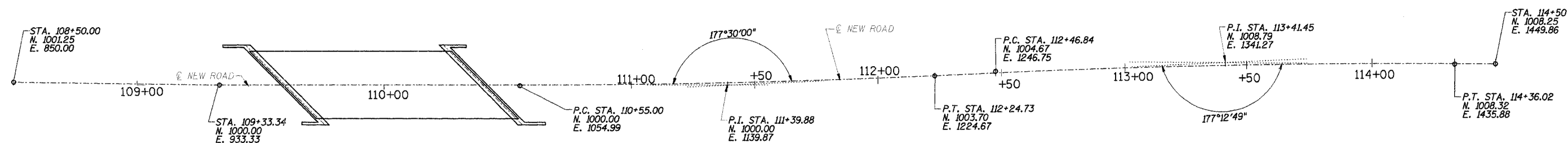
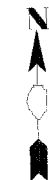
PLAN & PROFILE STA. 108+50 TO STA. 114+50

ROUTE NO.	SECTION	LOBBY	TOTAL SHEETS	SHEET NO.
TR 261	*	Vermillion	10	4

\*94-14129-00-BR

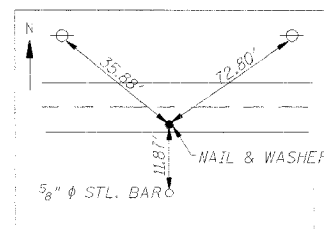
BENCHMARKS

- BM #1 - CHISELED SQUARE IN TOP OF NE WINGWALL OF EXISTING BRIDGE, ELEV. 99.11
- BM #2 - R.R. SPIKE IN POWER POLE, STA. 108+24, 19' RT. ELEV. 99.52
- BM #3 - R.R. SPIKE IN POWER POLE, STA. 111+31, 36' RT. ELEV. 98.52



© STA. 106+00.00, 0.00' RT.  
N. 1000.00  
E. 600.00

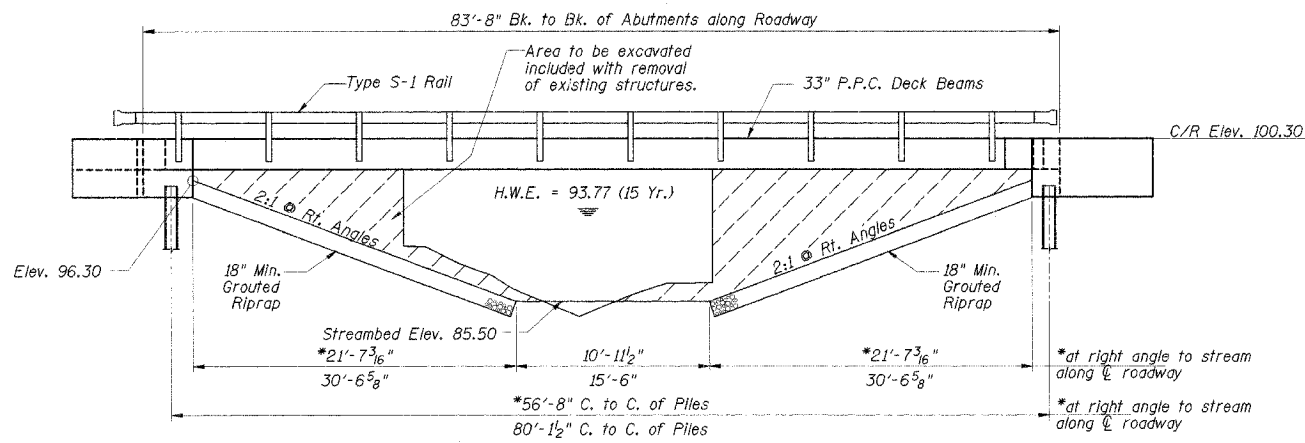
TIE POINT #1



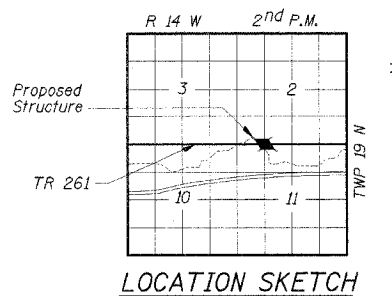
© STA. 114+00.12, 8.35' RT.  
N. 1000.00  
E. 1400.00

TIE POINT #2

ROUTE NO.	SECTION	COUNTY	TOTAL SHEETS	SHEET NO.
TR 261	*	Vermilion	10	5



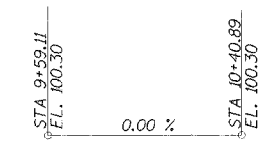
**ELEVATION**



**LOCATION SKETCH**

STRUCTURE NO. 092-3456  
 SEC. 94-14129-00-BR BUILT 20  
 OAKWOOD ROAD DISTRICT  
 VERMILION COUNTY  
 LOADING HS-20

**NAME PLATE**  
 See Standard 515001



**PROFILE GRADE**

**DESIGN SPECIFICATIONS**  
 AASHTO (2002) and applicable Interims

**DESIGN LOADING**  
 HS 20-44  
 25 P.S.F Future Wearing Surface

**DESIGN STRESSES**

- $f'_c = 3,500$  psi (Cast in Place Concrete)
- $f'_c = 5,000$  psi (P.P.C. Units)
- $f'_{ci} = 4,000$  psi (P.P.C. Units)
- $f_y = 60,000$  psi (Reinforcement)
- $f'_s = 270,000$  psi ( $\frac{1}{2}$ "  $\phi$  Strands)
- $f'_{si} = 201,960$  psi ( $\frac{1}{2}$ "  $\phi$  Strands)

**WATERWAY DATA**

Drainage Area	6.6 Sq. Mi.
Existing Opening (15 Yr.)	126 Sq. Ft.
Required Opening (15 Yr.)	188 Sq. Ft.
Proposed Opening (15 Yr.)	227 Sq. Ft.
Design Discharge (15 Yr.)	530 C.F.S.
Computed Discharge (100 Yr.)	798 C.F.S.
15 Yr. Head	0.00 Ft.
100 Yr. Head	0.00 Ft.

**BORING DATA**

N - Standard Penetration Test - Blows per foot to drive 2" O.D. split spoon sampler 12" with 140 lb. hammer falling 30".  
 Qu - Unconfined Compressive Strength - Tons/Sq. Ft.  
 W - Water Content - Percentage of oven dry weight - %  
 B - Bulge Failure, S - Shear Failure, E - Estimated Value

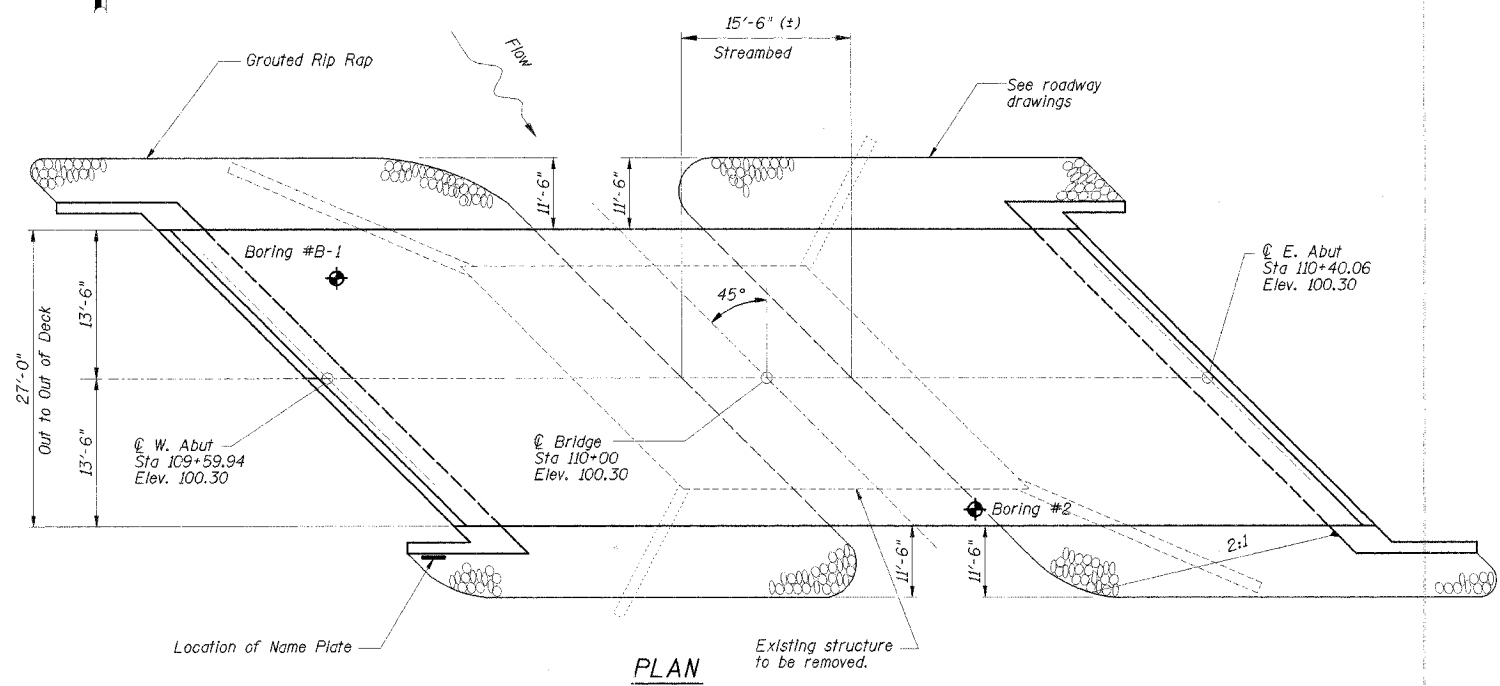
Elev. 100.0	N	Qu	W	Soil Description
0				MIXED BROWN SILTY CLAY-CLAY LOAM BACKFILL
5	6	1.2B	16	
	6	1.0B	23	
10	10	2.5B	14	
	9	1.4B	14	BROWN GRAY SANDY CLAY LOAM TILL
15	9	1.2B	13	
	13	2.1B	11.6	BROWN CLAY LOAM TILL
	29	8.7S	9.6	
20	33	10.9S	9.0	
	14	4.1B	9.9	GRAY SANDY CLAY LOAM TILL
25	17	2.1B	11	GRAY CLAY LOAM TILL
30	43	15.3NF	9.5	
	20	--	--	COARSE GRAY SAND FREEWATER
35	38	6.5S	9.5	BROWN SANDY CLAY LOAM TILL
40	23	5.8S	9.1	GRAY SANDY CLAY LOAM TILL
45	49	6.5S	22	GRAY SILT E.O.B. ELEV. 45.5

**BORING B-1**  
 STA 9+63, 9' LT

**BORING B-2**  
 STA 10+21, 12' RT

**TOTAL BILL OF MATERIAL**

ITEM	UNIT	SUPER	SUB	TOTAL
Removal of Existing Structures	Each	1		1
Precast Prestressed Concrete Deck Beams (33" Depth)	Sq. Ft.	2208		2208
Steel Railing, Type S-1	Foot	164		164
Concrete Structures	Cu. Yds.		32.2	32.2
Furnishing Steel Piles, HPI0x42	Foot		462	462
Driving Steel Piles	Foot		462	462
Test Piles, Steel HPI0x42	Each		2	2
Metal Shoes	Each		14	14
Conc. Cut-off Wall	Cu. Yds.		8.5	8.5
Name Plate	Each		1	1
Reinforcement Bars	Pound		3380	3380
Structure Excavation	Cu. Yds.		165	165
Grouted Rip Rap	Sq. Yds.		423	423

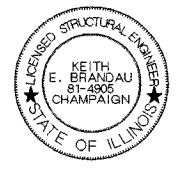


**PLAN**

**GENERAL NOTES**

- The Contractor shall drive 1 steel test pile in a permanent location at each abutment as directed by the Engineer before ordering the remainder of piles.
- Boring Data is shown only as a guide to bidders in estimating soil conditions which may be encountered during construction.
- Class SI or MS Concrete shall be used in the abutments.
- Masonry material salvaged from the existing structure shall not be reused and shall be disposed of off the site by the contractor.

DSGN	D.W. Walter				
DR	C.M. Zajicek				
CHK	K.E. Brandau				
APVD	K.E. Brandau	NO.	DATE	REVISION	BY



I certify that to the best of my knowledge, information and belief, this bridge design is structurally adequate for the design loading shown on the plans. The design is an economical one for the style of structure and complies with the requirements of the current "AASHTO Standard Specifications for Highway Bridges."

*Keith E. Brandau 11/30/06*  
 KEITH E. BRANDAU  
 Illinois Licensed Structural Engineer Number 4905  
 License Expires 11/30/06

**FRAÜENHÖFFER**

Frauenhoffer and Associates, P.C. Consulting Engineers  
 3002 Crossing Court Champaign, IL 61822 217-351-6268

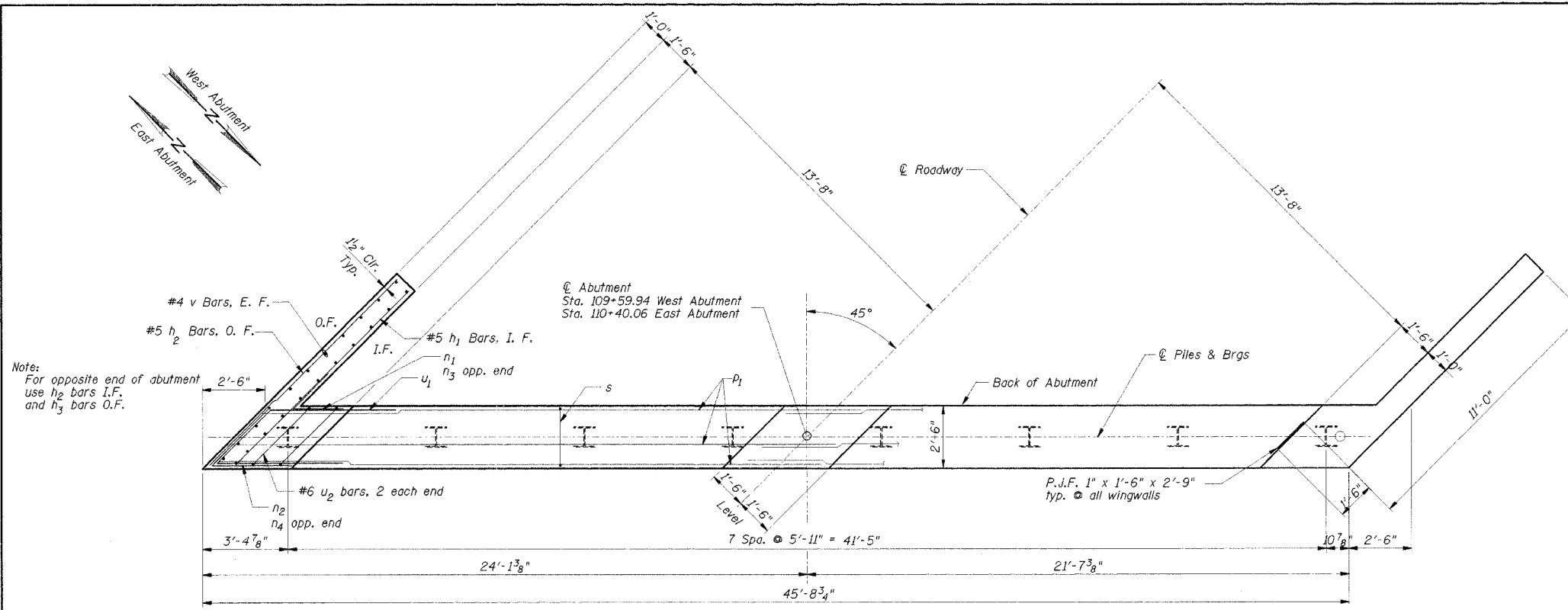
**GENERAL PLAN AND ELEVATION**

OAKWOOD ROAD DISTRICT  
 SECTION 94-14129-00-BR  
 VERMILION COUNTY

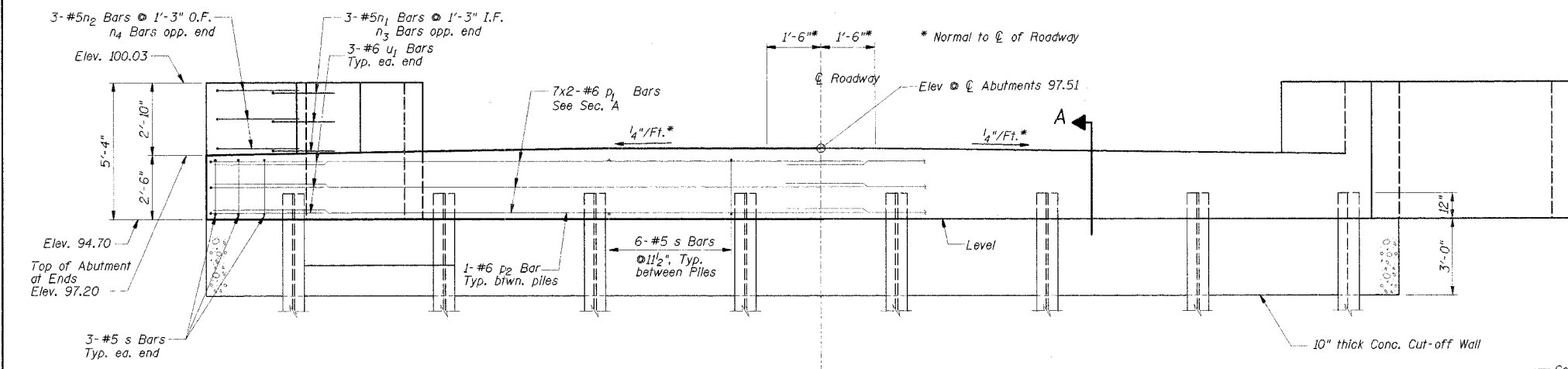
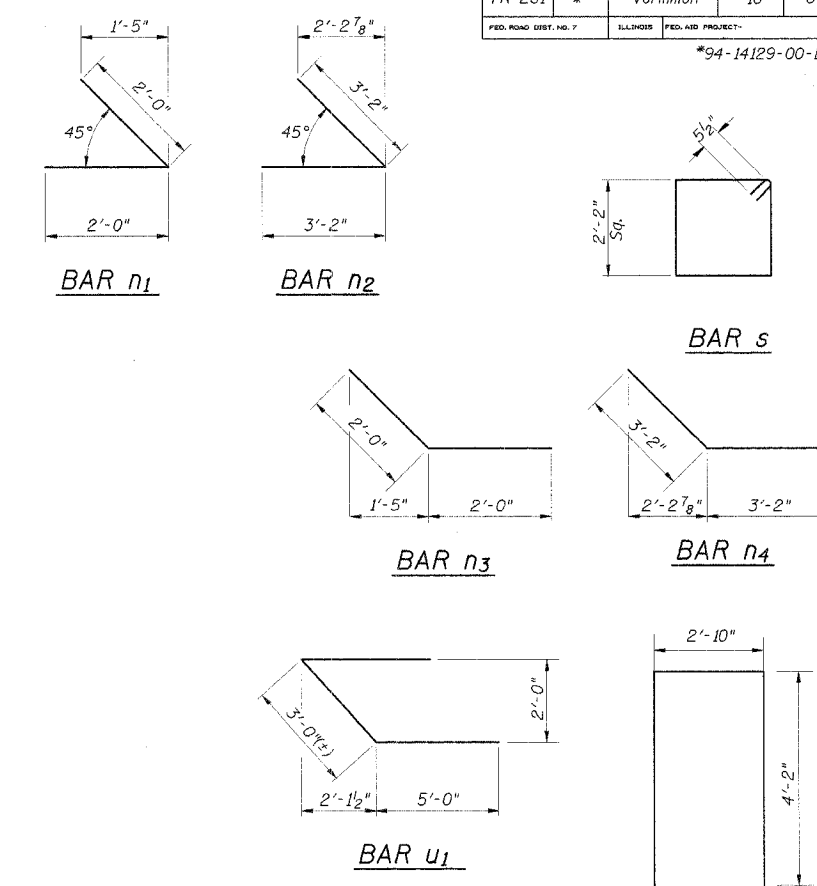
SHEET	5
DWG NO.	oak2-gps.dgn
DATE	DEC 2005
PROJ NO.	97062

ROUTE NO.	SECTION	COUNTY	SHEET NO.	SHEET
TR 261	*	Vermilion	10	6

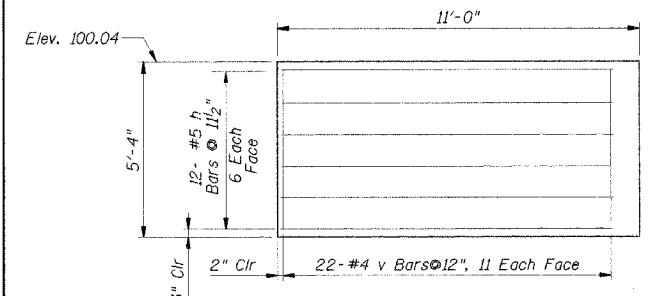
\*94-14129-00-BR



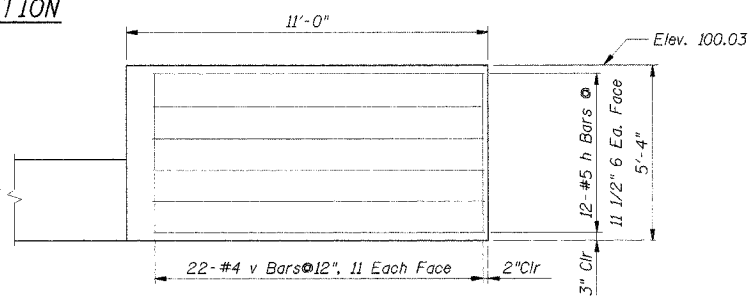
TOP PLAN



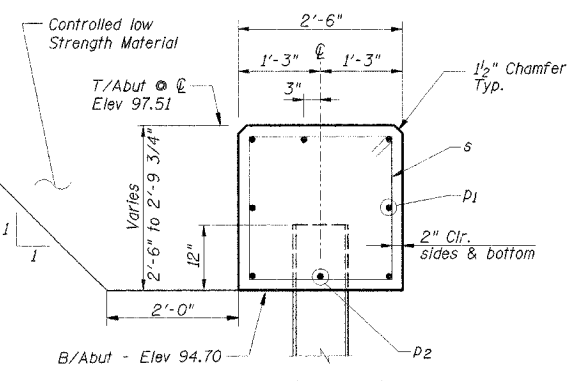
ELEVATION



SOUTHWEST WING ELEVATION



SOUTHEAST WING ELEVATION



SECTION A

PILE DATA

Type: Steel HP 10 x 42  
 No. Required: 7 East Abutment  
 7 West Abutment  
 Capacity: 29.0 T/Pile @ W. Abutment  
 29.0 T/Pile @ E. Abutment  
 Est. Length: 33 Ft. E. Abutment  
 33 Ft. W. Abutment  
 Test Piles: 1 East Abutment  
 1 West Abutment

BILL OF MATERIAL - 2 ABUTS.

Bar	No.	Size	Length	Shape
n1	12	#5	9'-9"	—
n2	24	#5	10'-8"	—
n3	12	#5	11'-6"	—
n4	6	#5	4'-0"	—
n5	6	#5	6'-4"	—
n6	6	#5	4'-0"	—
n7	6	#5	6'-4"	—
p1	28	#6	24'-3"	—
p2	14	#6	5'-6"	—
s	92	#5	9'-7"	□
u1	12	#6	13'-0"	—
u2	8	#6	11'-2"	—
v	88	#4	5'-0"	—
Concrete Structures			Cu. Yds.	32.2
Reinforcement Bars			Lbs.	3380
Test Pile, Steel HP10x42			Each	2
Steel Piles, HP10x42			Foot	462
Metal Shoes			Each	14
Name Plate			Each	1
Concrete Cut-off Wall			Cu. Yds.	8.5
Structure Excavation			Cu. Yds.	165

DSGN	D.W. Walter				
DR	D. W. Walter				
CHK	K.E. Brandau				
APVD	K.E. Brandau	NO.	DATE	REVISION	BY

NOTE: All edges shall have Standard 3/4" Chamfer, except as noted.

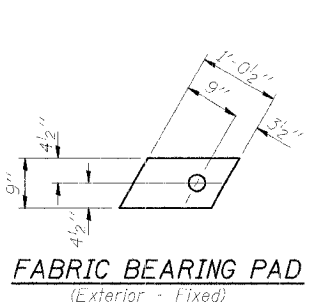
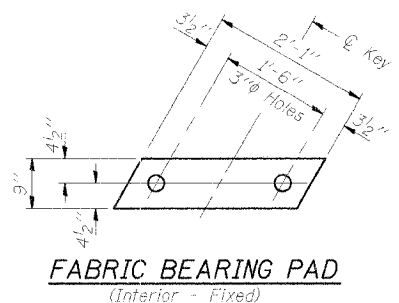
**FRAUENHOFFER**  
 Frauenhoffer and Associates, P.C. Consulting Engineers  
 3002 Crossing Court Champaign, IL 61822 217-351-6268

ABUTMENTS  
 OAKWOOD ROAD DISTRICT  
 SECTION 94-14129-00-BR  
 VERMILION COUNTY

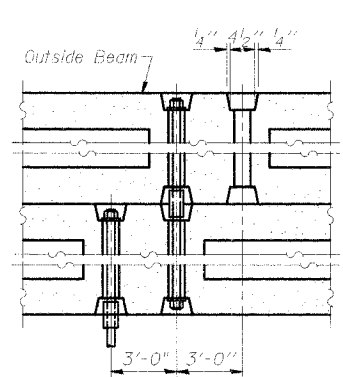
SHEET 6  
 DWG NO. oak2-abt.dgn  
 DATE DEC 2005  
 PROJ NO. 97062

PLATE NO.	SECTION	COUNTY	SHEETS	POST
TR 261	*	Vermilion	10	7
FED. ROAD DIST. NO. 7		ILLINOIS FED. AID PROJECT		

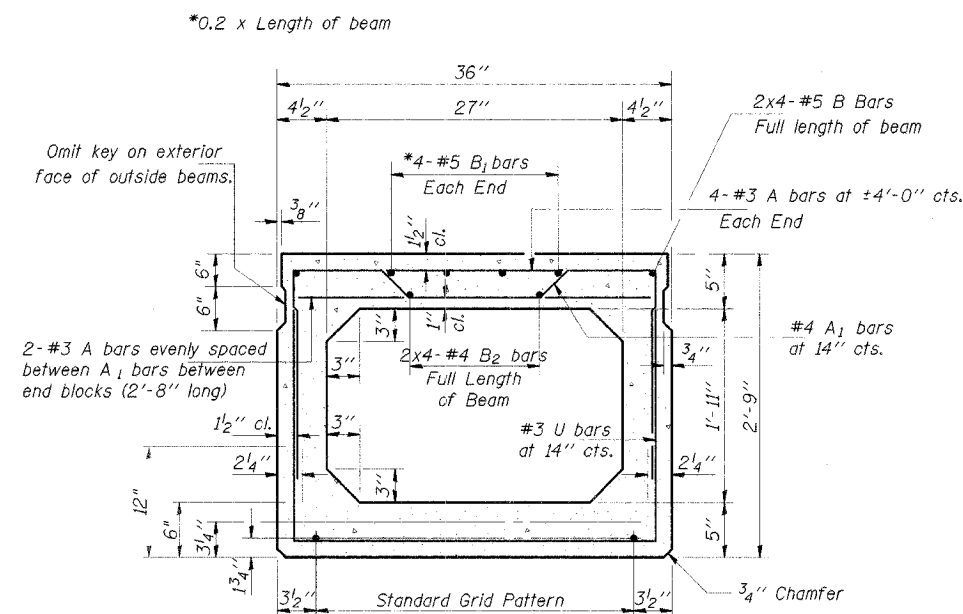
\*94-14129-00-BR



**FIXED**



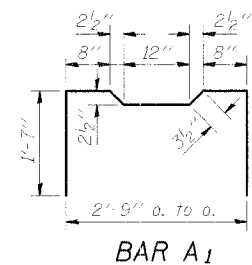
**TYPICAL TRANSVERSE TIE ASSEMBLY**



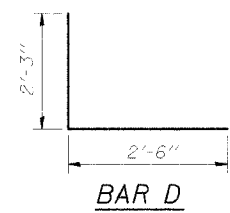
**TYPICAL SECTION**

17-1/2" Strands Each Strand Stressed to 30,900 Lbs.  
8-Strands 1 3/4" up, 5-Strands 3/4" up  
2-Strands 6" up, 2-Strands 12" up

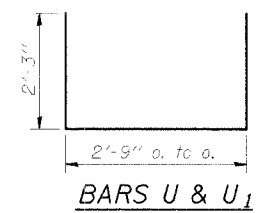
Note: Place strands symmetrically about C of beam.



**BAR A1**

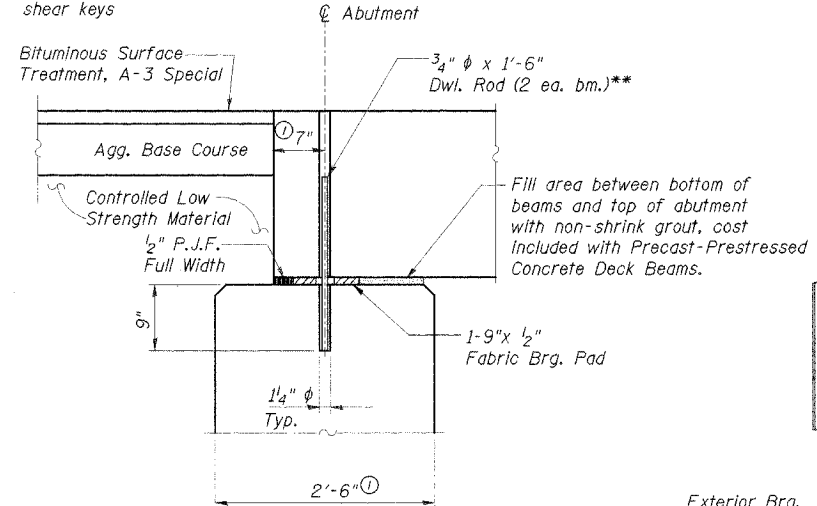


**BAR D**



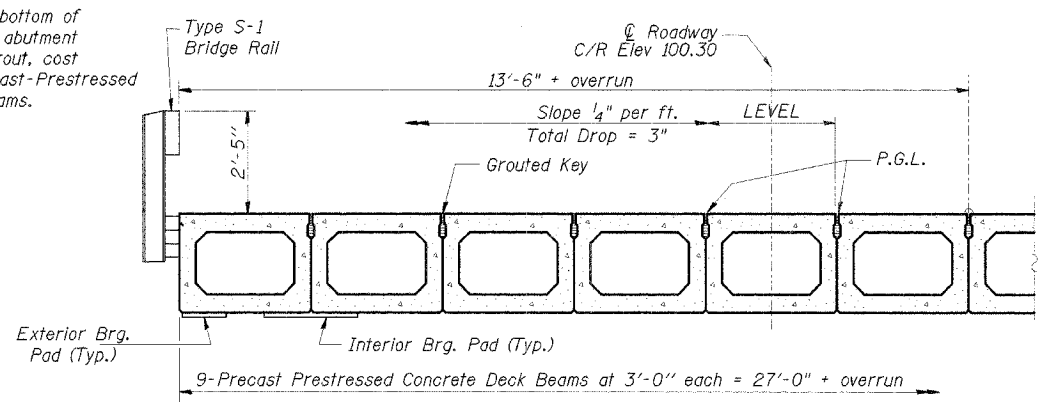
**BARS U & U1**

\*\*Dowel rods to be grouted after beams are in place and prior to grouting the shear keys

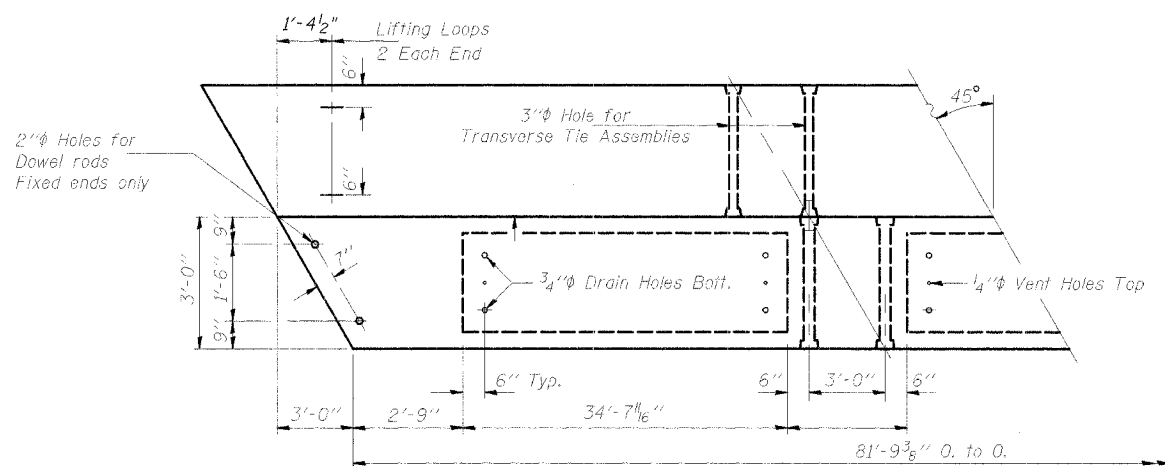


**SECTION AT ABUTMENT**

Ⓛ Perpendicular to C of abutment



**HALF CROSS SECTION**



**PLAN**

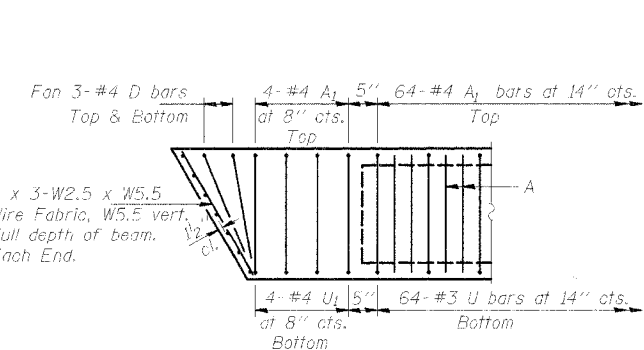
**NOTES**

Prestressing steel shall be uncoated high strength, stress-relieved 7-wire strand, Grade 270. The nominal diameter shall be 1/2" and the nominal cross-sectional area shall be 0.153 sq. in. Lifting loops shall be 7/8" diameter, 6 x 25 class wire rope with fiber core and shall have a minimum ultimate tensile strength of 63,000 lbs. or 3-1/2" phi-270 ksl strands, as shown. The 1" rods in the transverse tie assembly shall be tightened to a snug fit and the threads set. Pockets that receive transverse tie bar on outside shall be filled with grout after transverse tie assembly is in place. Reinforcement bars shall conform to the requirements of AASHTO M-31, M-42 or M-53 Grade 60. The bearing seat surfaces shall be adjusted by shimming to assure firm and even bearing. Two 1/8" fabric adjusting shims of the dimensions of the Exterior Bearing Pad shall be provided for each bearing. Keyway surfaces shall be cleaned to remove form oil or other bond breaking material prior to shipment of the beams. Cleaning shall be done by sandblasting the keyway areas between top of the beam and the bottom edge of the key. A Calcium Nitrite Corrosion Inhibitor, as covered in the Special Provisions, shall be used in the concrete for precast prestressed concrete deck beams. Required Release Strength, f'ci, shall be 4000 p.s.i. An equal substitution of the low-relaxation strands for the stress-relieved strands will be permitted.

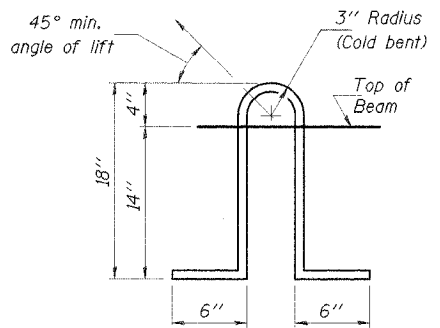
**BILL OF MATERIAL (One Beam)**

Bar	No.	Size	Length	Shape
A	134	#3	2'-8"	—
A1	72	#4	6'-1"	┌
B	8	#5	22'-4"	—
B1	8	#5	16'-5"	—
B2	8	#4	22'-0"	—
D	12	#4	4'-9"	┌
U	64	#3	7'-3"	┌
U1	8	#4	7'-3"	┌
Precast Prestressed Conc. Deck Bms.		Sq. Ft.	2208*	

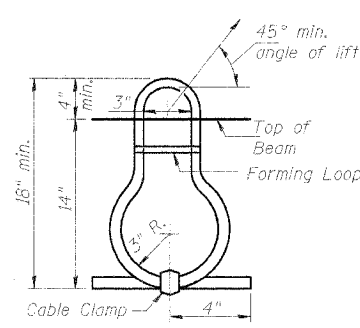
\*Total Quantity of Beams



**END PLAN**



**LIFTING LOOP DETAIL**



**LIFTING LOOP ALTERNATE**

DSGN	D.W. Walter				
DR	D.W. Walter				
CHK	K.E. Brandau				
APVD	K.E. Brandau	NO.	DATE	REVISION	BY

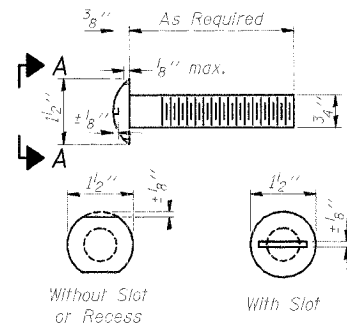
**FRAUENHÖFFER**  
Frauenhoffer and Associates, P.C. Consulting Engineers  
3002 Crossing Court Champaign, IL 61822 217-351-6268

**SUPERSTRUCTURE**  
OAKWOOD ROAD DISTRICT  
SECTION 94-14129-00-BR  
VERMILION COUNTY

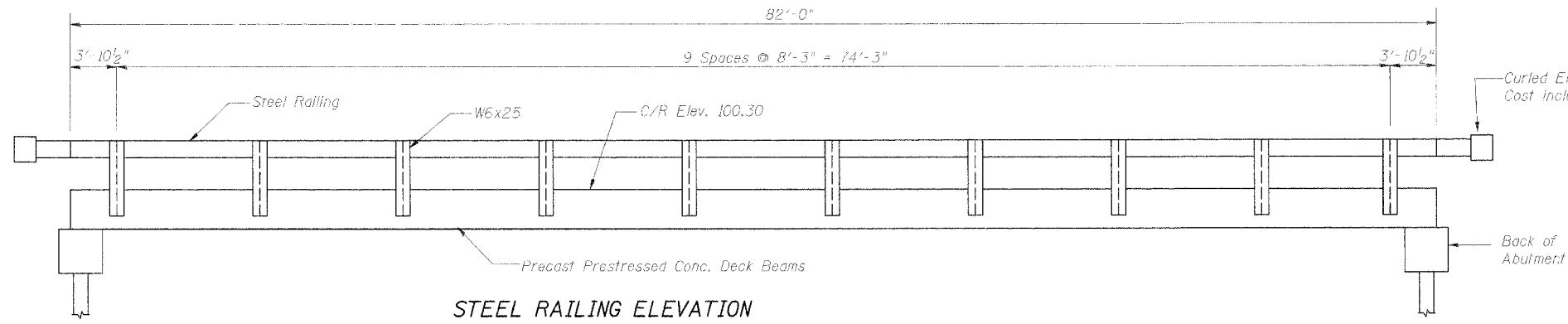
SHEET 7  
DWG NO. oak2-sup.dgn  
DATE DEC. 2005  
PROJ NO. 97062

ROUTE NO.	SECTION	COUNTY	SHEET	TOTAL SHEETS
TR 261	*	Vermilion	10	8
FED. ROAD DIST. NO. 7		ILLINOIS	FED. AID PROJECT	

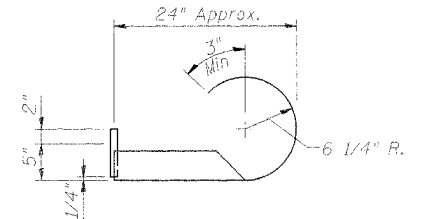
\*94-14129-00-BR



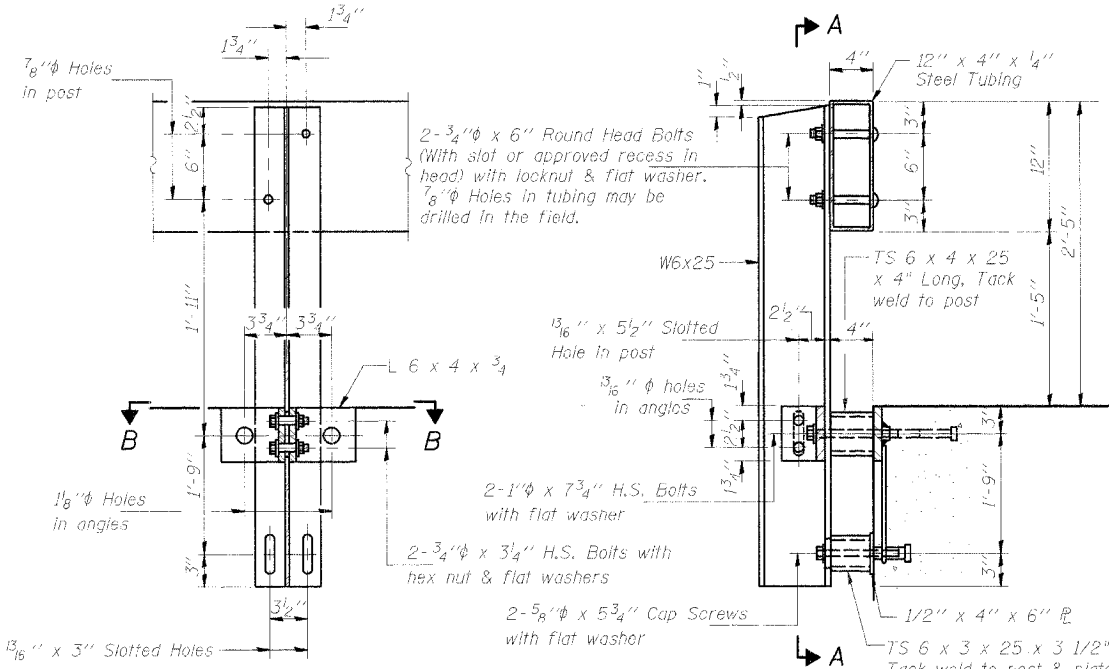
VIEW A-A  
ROUND HEAD BOLT



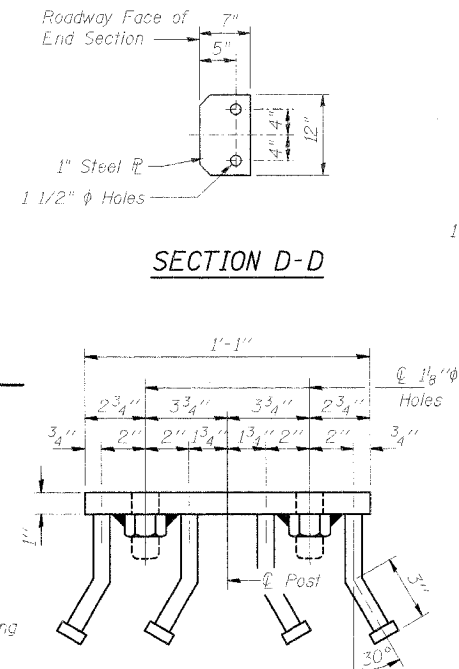
STEEL RAILING ELEVATION



CURL END SECTION DETAIL

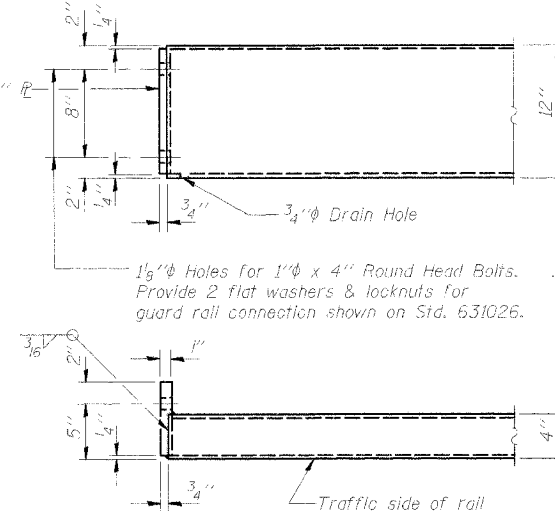


SECTION A-A



SECTION D-D

VIEW C-C



END OF RAIL DETAILS

**NOTES**

Hollow structural steel tubing shall conform to the requirements of ASTM designation A-500 Grade B Structural Steel Tubing and shall meet the longitudinal CVN requirements of 15 ft-lbs at 0° F.

All other steel shapes and plates shall conform to the requirements of AASHTO M-270 Grade 36 except posts and angles shall conform to AASHTO M-270, Grade 50.

Bolts, cap screws, and nuts shall conform to the requirement of ASTM designation A-307 except for high strength bolts, nuts and washers noted which shall conform to AASHTO M-164.

All bolts, nuts, cap screws, washers and lock washers shall be galvanized in accordance with AASHTO M-232.

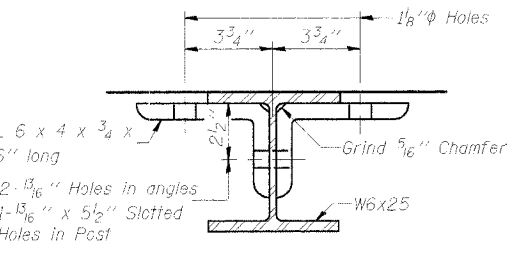
All posts, railing, rail splices, anchor devices and angles shall be galvanized after shop fabrication in accordance with AASHTO M-111 and ASTM A-385. Galvanized rail shall not be painted.

Railing shall be in accordance with Section 509 of the Standard Specifications, except as noted, and will be paid for at the contract unit price per foot for STEEL RAILING, TYPE S-1.

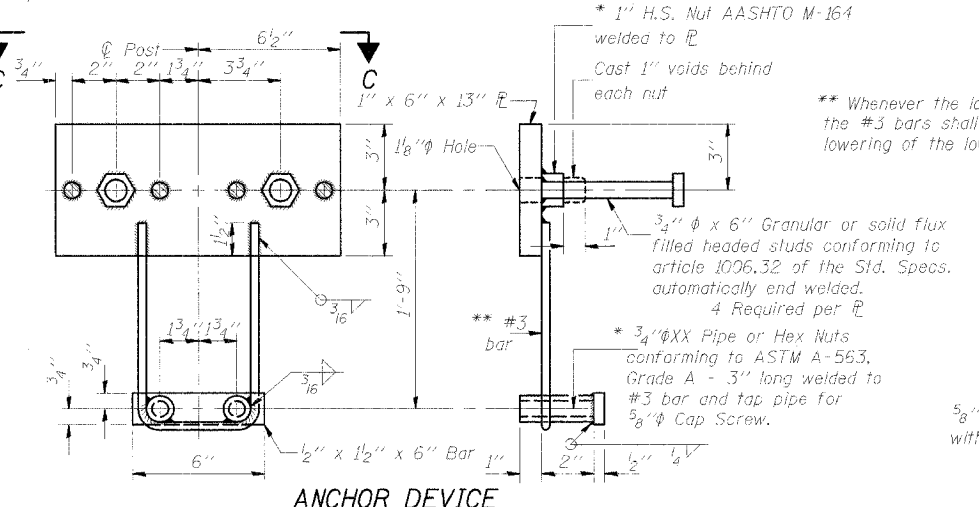
All field drilled holes shall be coated with an approved zinc rich paint before erection.

The lower portion of the post flange in contact with concrete shall receive two coats of asphalt paint conforming to Section 1060.07 Type II or place 1/2 inch fabric bearing pad between the post and concrete.

The 3/4 inch high strength bolts used to connect the 6 x 4 x 3/4 angles to the post shall be tightened in accordance with Article 505.04(f)(3) of the Standard Specifications. The 1 inch high strength bolts connecting the angles to the concrete shall be tightened to a snug fit and given an additional 1/8 turn. The 5/8 inch cap screws in bottom of posts shall be tightened to a snug fit only.

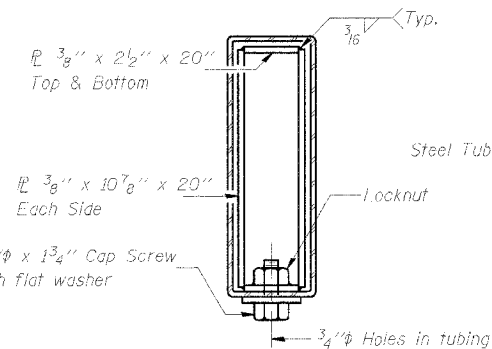


SECTION B-B

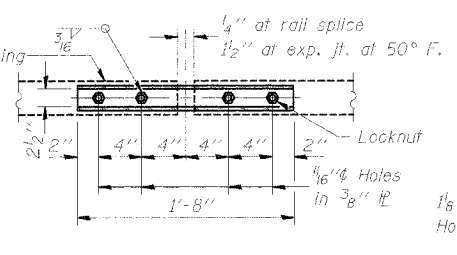


ANCHOR DEVICE

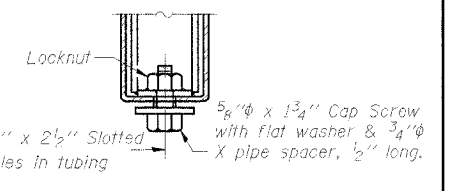
\* Threaded areas shall be plugged or blocked off during casting of beam.



SECTIONS AT RAIL SPLICE



PLAN-BOTT. SPLICE R  
TYPICAL



RAIL SPLICE CONNECTION  
AT EXPANSION JT.

**BILL OF MATERIAL**

Item	Unit	Quantity
Steel Railing Type S-1	Foot	164

DSGN	D.W. Walter				
DR	D.W. Walter				
CHK	K.E. Brandau				
APVD	K.E. Brandau	NO.	DATE	REVISION	BY

**FRAUENHÖFFER**

Frauenhoffer and Associates, P.C. Consulting Engineers  
3002 Crossing Court Champaign, IL 61822 217-351-6268

**STEEL RAILING TYPE S-1**

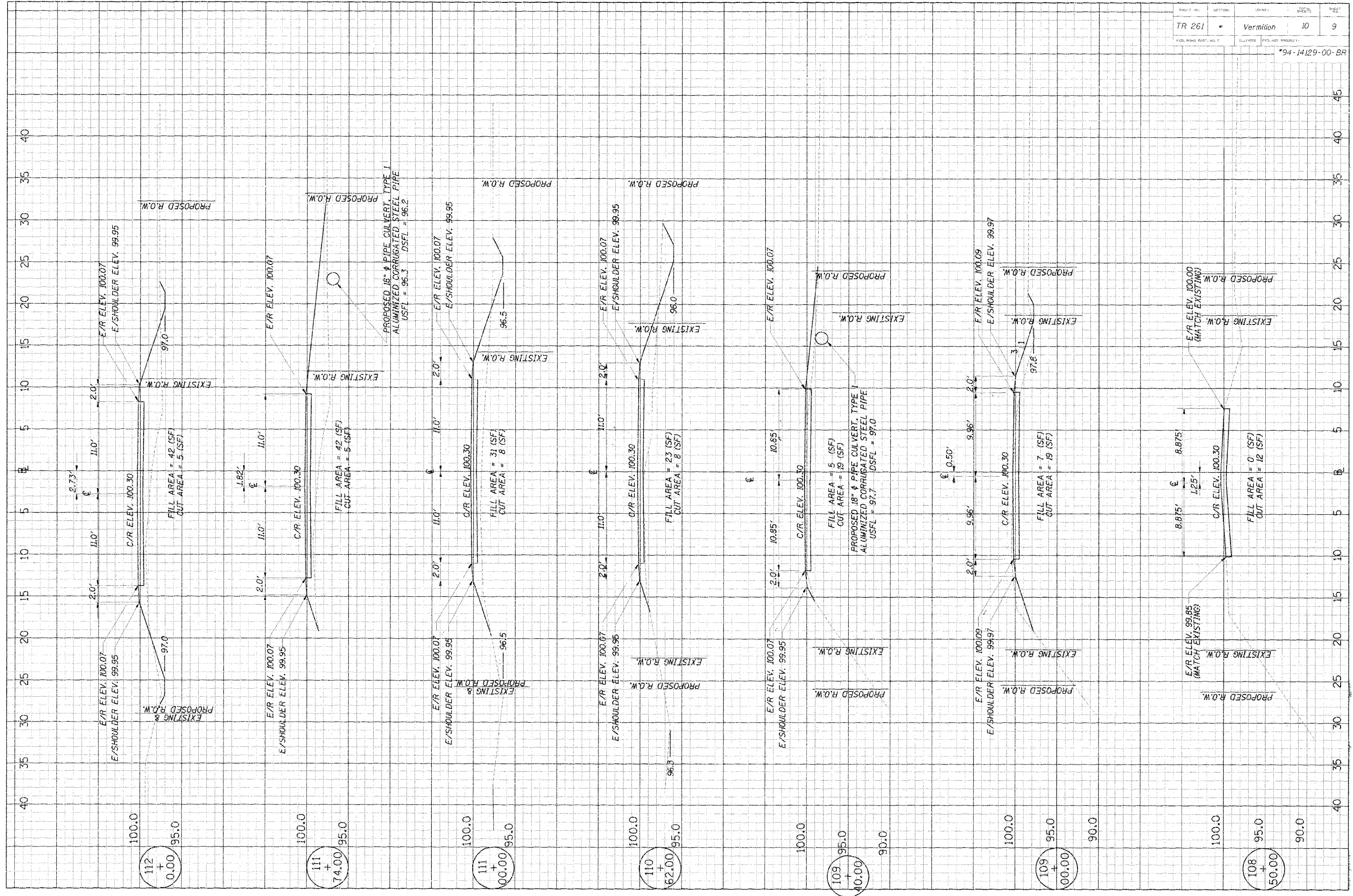
OAKWOOD ROAD DISTRICT  
SECTION 94-14129-00-BR  
VERMILION COUNTY

SHEET	8
DWG NO.	oak2-s1.dgn
DATE	DEC. 2005
PROJ NO.	97062



ROUTE NO.	SECTION	COUNTY	SHEET NO.	SHEET TOTAL
TR 261	*	Vermilion	10	9
FED. ROAD DIST. NO. 7		ELLIPSE	PROJ. AND PROJECT	

\*94-14129-00-BR



112 + 0.00

111 + 74.00

111 + 00.00

110 + 62.00

109 + 40.00

109 + 00.00

108 + 50.00

ROUTE NO.	SECTION	COUNTY	SHEET NO.	TOTAL SHEETS
TR 261		Vermilion	10	10
PREL. ROAD DIST. NO. 7		ILLINOIS	PREL. ROAD PROJECT	
*94-14129-00-BR				

