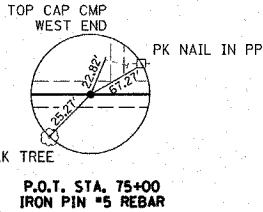


| | |
|-------------|--|
| DATE | |
| BY | |
| REVISION | |
| NO. | |
| DESCRIPTION | |
| DATE | |
| BY | |
| REVISION | |
| NO. | |
| DESCRIPTION | |

| | |
|-------------|--|
| DATE | |
| BY | |
| REVISION | |
| NO. | |
| DESCRIPTION | |
| DATE | |
| BY | |
| REVISION | |
| NO. | |
| DESCRIPTION | |

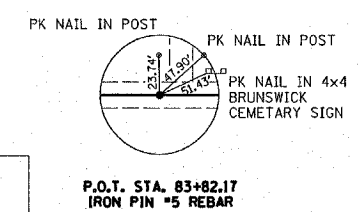
| | |
|-------------|--|
| DATE | |
| BY | |
| REVISION | |
| NO. | |
| DESCRIPTION | |
| DATE | |
| BY | |
| REVISION | |
| NO. | |
| DESCRIPTION | |



LINDA S. WAGNER
JUDY A. KNIERIM
DAVID L. RODMAN
LARRY D. RODMAN
PARCEL NO. 1

SW 1/4, NW 1/4, SEC 11, T. 12 N., R. 3 E., 3RD P.M.

ORVILLE B. ROBERTSON &
JANET KAY ROBERTSON
PARCEL NO. 2



| | | | | |
|---------------------|----------------|--------------------|---------------------|----|
| T.R. | SECTION | COUNTY | TOTAL SHEETS | SH |
| 57 | 03-17116-00-BR | SHELBY | 16 | N |
| STA. | TO STA. | | | |
| FED. ROAD DIST. NO. | ILLINOIS | CONTRACT NO. 91354 | RIDGE ROAD DISTRICT | |

STATION 75+28 P.E.
PIPE CULVERTS, CLASS D, TYPE 1 18"
36 FOOT LONG
EXISTING 18" CMP TO BE REMOVED (INCIDENTAL)
17.5' LT. STA. 75+10 U.S.F.L. 638.88
17.5' LT. STA. 75+46 D.S.F.L. 637.68

EXISTING 4" CLAY TILE
TO BE ADJUSTED TO FIT BACKSLOPE.
COST INCLUDED WITH EARTH EXCAVATION

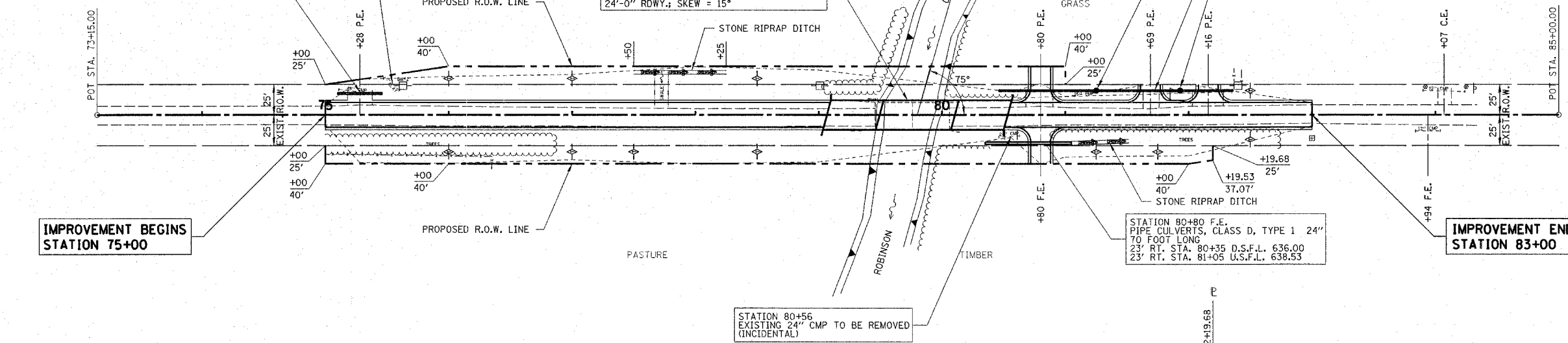
STATION 79+80 - SPECIAL BRIDGE DESIGN
PRECAST PRESTRESSED CONCRETE DECK BEAM
BRIDGE. 3 SPANS: 42'-0", 61'-0", 42'-0"
24'-0" RDWY.; SKEW = 15°

LT. STA. 81+25
INLET TY. A, TY 8, F & G
INV. = 638.9
T.G. = 641.5

PIPE CULVERTS, CLASS D, TYPE 1 15"
190 FOOT LONG
20' LT. STA. 80+46 D.S.F.L. 636.00
20' LT. STA. 82+36 U.S.F.L. 643.32
EXISTING 15" CMP TO BE REMOVED (INCIDENTAL)

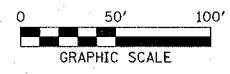
LT. STA. 81+93
INLET TY. A, TY 8, F & G
INV. = 641.4
T.G. = 643.5

P.O.T. STA. 83+82.17
IRON PIN #5 REBAR



IMPROVEMENT BEGINS
STATION 75+00

IMPROVEMENT ENDS
STATION 83+00



LORN & MARSHA GROVES
PARCEL NO. 3
NW 1/4, SW 1/4, SEC 11, T. 12 N., R. 3 E., 3RD P.M.

JOANNE M. COURTNEY

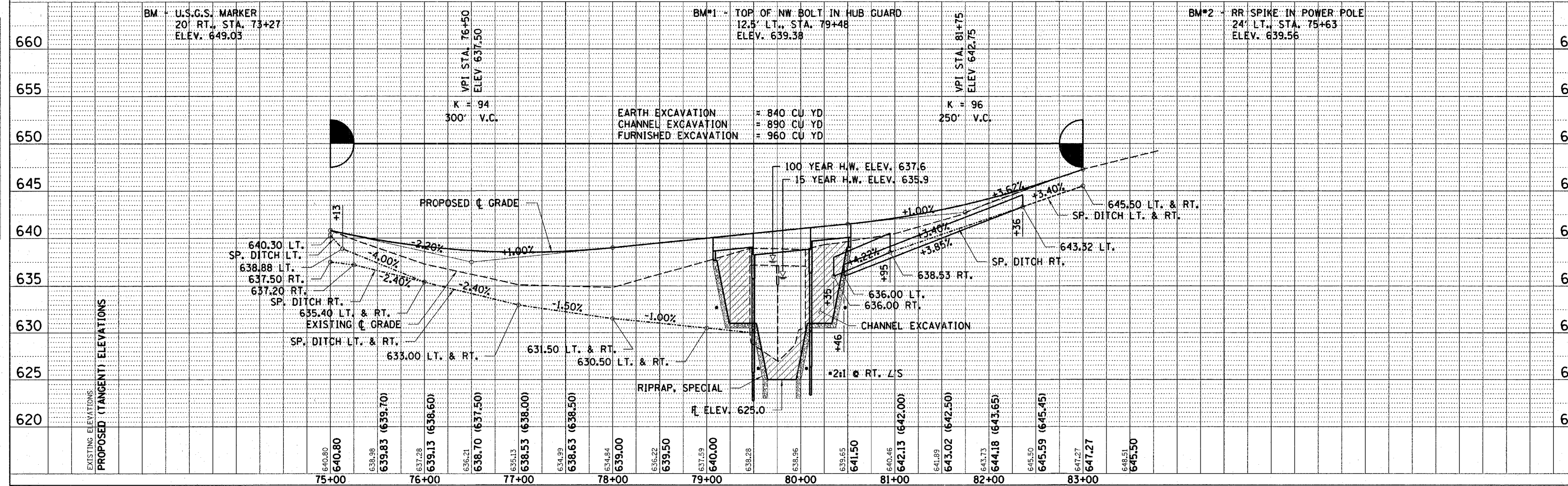
TREE REMOVAL, ACRES
RT. STA. 75+00 TO 77+00 = 0.2
LT. STA. 79+00 TO 80+70 = 0.2
RT. STA. 79+00 TO 83+00 = 0.4
TOTAL = 0.8 ACRE

TEMPORARY DITCH CHECKS
DITCH CHECK SHALL BE CONSTRUCTED AS DIRECTED
BY THE ENGINEER IF EARTH SLOPES TO BE EXPOSED
MORE THAN 7 DAYS.

ENTRANCES TO BE BUILT
LT. STA. 75+28 P.E. +10.76% 16' SURF.
RT. STA. 80+80 F.E. -2.85% 24' SURF.
LT. STA. 80+80 P.E. -1.50% 24' SURF.
LT. STA. 81+69 P.E. W/M.B.T. +4.20% 16' SURF.
LT. STA. 82+16 P.E. +5.40% 20' SURF.

CHANNEL EXCAVATION
THE CHANNEL SHALL BE EXCAVATED AS SHOWN IN
THE PLANS WITH 2:1 SIDE SLOPES WITHIN THE LIMITS
OF THE PROPOSED STRUCTURE, THEN TAPER TO THE
EXISTING CHANNEL AT THE R.O.W. LINES. ONLY
SUITABLE EXCAVATED MATERIAL SHALL BE USED IN
THE EMBANKMENT.

EXISTING STRUCTURE NO. 087-3075
STATION 79+76 - 2 SPAN PRECAST CONCRETE
SLAB BRIDGE WITH CONCRETE CURB & STEEL
PLATE RAILING ON CLOSED TIMBER ABUTMENTS
AND TIMBER PILE BENT PIER
59'-10" BK. TO BK. ABUTS; 22'-6" o-o. DECK.
REMOVAL OF EXISTING STRUCTURES = 1 EACH



EARTH EXCAVATION = 840 CU YD
CHANNEL EXCAVATION = 890 CU YD
FURNISHED EXCAVATION = 960 CU YD

100 YEAR H.W. ELEV. 637.6
15 YEAR H.W. ELEV. 635.9

RIPRAP, SPECIAL
ELEV. 625.0

2:1 @ RT. LS