

ROUTE NO.	SEC.	COUNTY	TOTAL SHEETS	SHEET NO.
FAS RTE 1588	*	ADAMS	38	9
FED. ROAD DIST. NO. 7		ILLINOIS	PROJECT	

Location #1 Structure No. 001-3027
 *05-00189-00-BR
SHEET NO. 1 OF 12

Existing Structure - Single bridge built in 1958. Structure No. 001-3027 at Sta 336+56.
 The structure is a three span, wide flange steel beam bridge with open stub concrete abutments and solid concrete piers, 149'-6" back to back of abutments, 28'-0" roadway width and 0° skew.
 Roadway will be closed during construction. Access to local properties shall be maintained during construction.
 No salvage.

SCOPE OF WORK

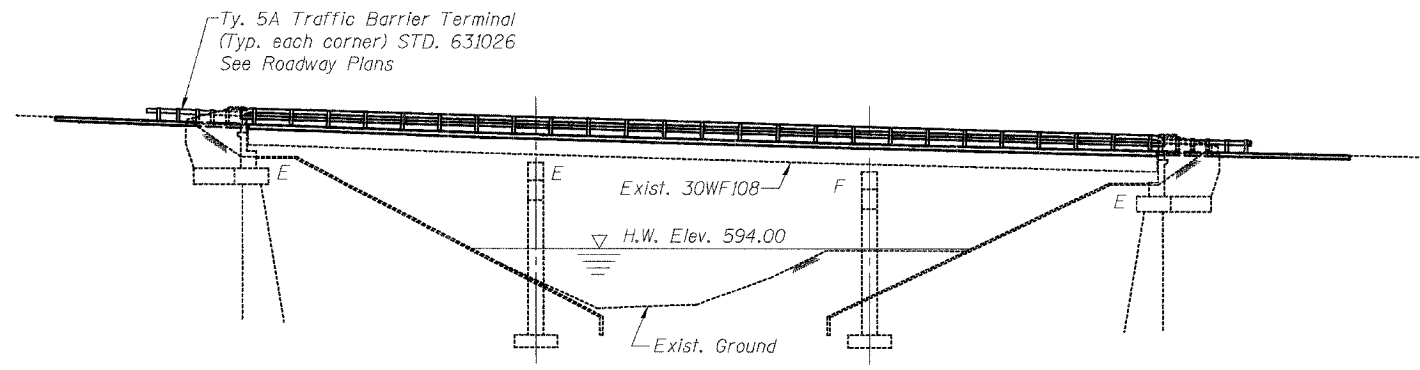
1. Remove deck, curbs, railing and top of abutment backwalls.
2. Remove existing rocker expansion bearings at abutments. Replace with elastomeric bearings.
3. Install shear connectors in positive moment areas of beam lines.
4. Construct 7 1/2" deck, top of abutment backwalls, preformed joint seals, steel bridge railing (special) and bridge approach pavements.

BM #2 (Location #1)-
 60d Spike in Power Pole, 40' Rt. of Sta 337+58, Elevation = 600.59

INDEX OF SHEETS

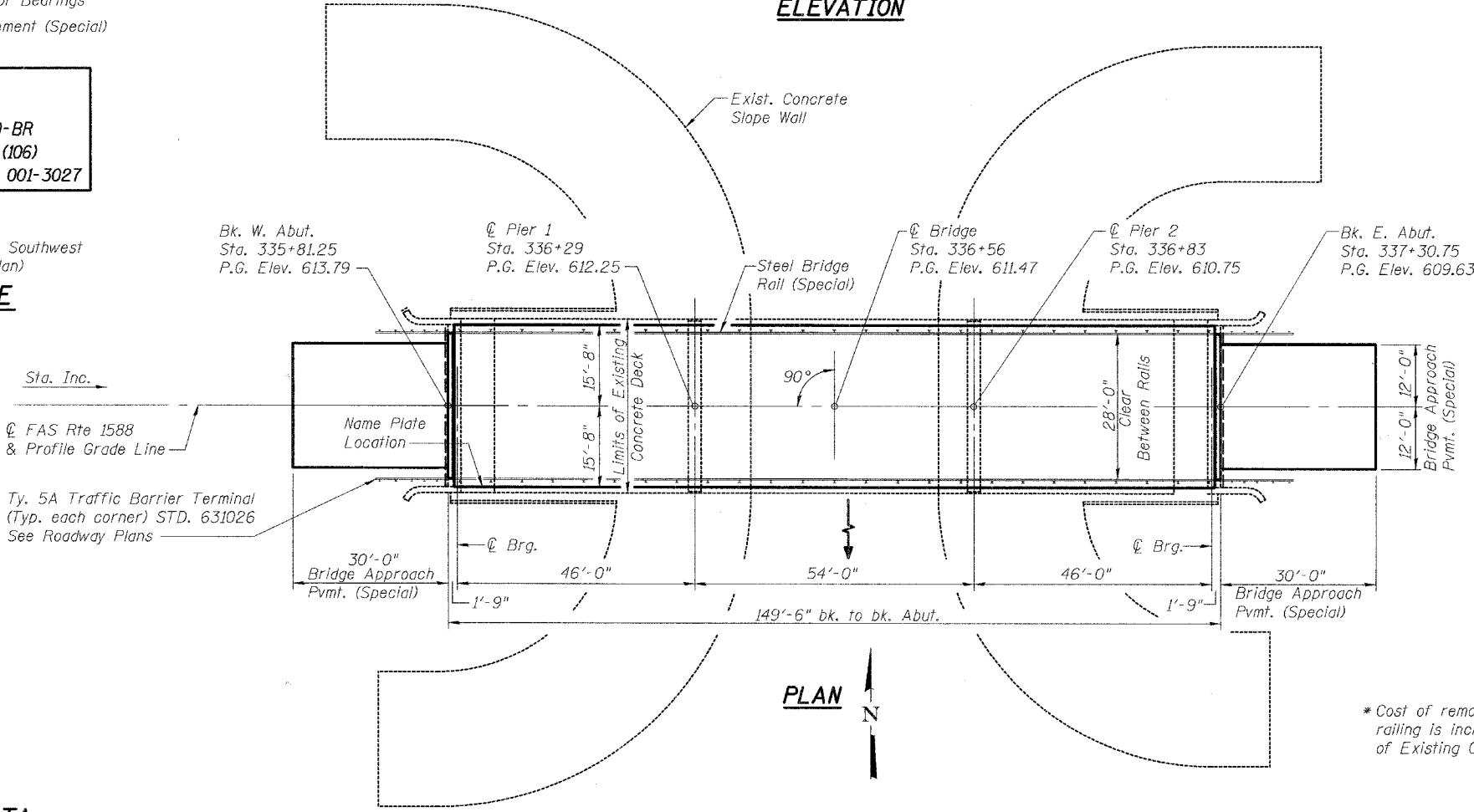
- 1 General Plan and Elevation
- 2-3 Top of Slab Elevations
- 4-5 Superstructure
- 6 Steel Bridge Rail (Special)
- 7 Structural Steel Details
- 8 Moment & Reaction Tables, Jack and Remove Existing Bearings
- 9 Type I Elastomeric Bearing
- 10 Type II Elastomeric Bearing
- 11 Anchor Bolt Details for Bearings
- 12 Bridge Approach Pavement (Special)

**CURL CREEK
 REBUILT 200_**
 SEC. 05-00189-00-BR
 PROJECT RS-1588 (106)
 LOADING HS20 STR. NO. 001-3027

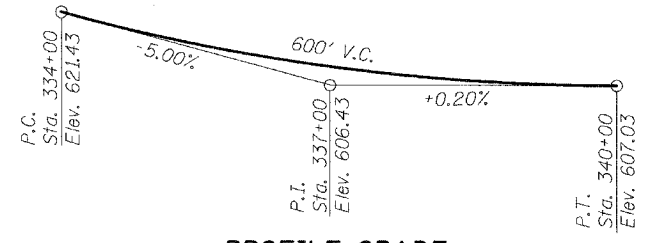


ELEVATION

Rail Mount Name Plate at Southwest Corner of Bridge (See Plan)
NAME PLATE
 See Std. 515001 (1 Required)



PLAN



PROFILE GRADE
 (along E roadway)

TOTAL BILL OF MATERIAL

ITEM	UNIT	SUPER	SUB	TOTAL
Name Plates	EACH	1		1
Removal of Existing Concrete Deck	EACH	1		1
Protective Coat	SQ YD	512		512
Elastomeric Bearing Assembly Type I	EACH	6		6
Elastomeric Bearing Assembly Type II	EACH	6		6
Concrete Superstructure	CU YD	116.0		116.0
Stud Shear Connectors	EACH	2,172		2,172
Reinforcement Bars, Epoxy Coated	POUND	26,880		26,880
Preformed Joint Seal 2 1/2"	FOOT	31.5		31.5
Preformed Joint Seal 4"	FOOT	31.5		31.5
Bridge Deck Grooving	SQ YD	458		458
Concrete Removal	CU YD	3.1		3.1
Jack and Remove Existing Bearings	Each	12		12
Steel Bridge Rail (Special)	FOOT	299		299
Bridge Approach Pavement (Special)	SQ YD	160		160

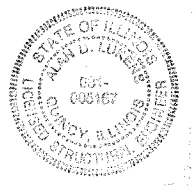
*Cost of removing existing steel bridge railing is included in Pay Item "Removal of Existing Concrete Deck".

SEISMIC DATA
 Seismic Performance Category (SPC) = A
 Bedrock Acceleration Coefficient (A) = 0.043
 Site Coefficient (S) = 1.0

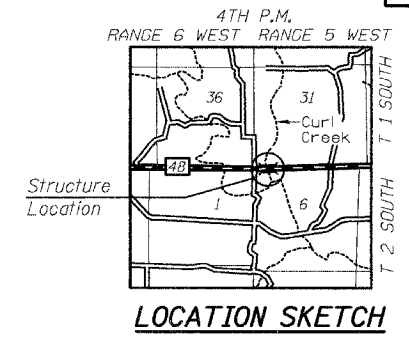
DESIGN SPECIFICATIONS
 17th Edition - 2002 AASHTO
 Load Factor Design
LOADING HS 20-44
 Allow 50#/sq. ft. for future wearing surface.

DESIGN STRESSES
 FIELD UNITS
 f'c = 2500 psi (existing)
 f'c = 3500 psi (new)
 fy = 60,000 psi (reinf.)
 fs = 18,000 psi (Existing Structure)

"I certify that to the best of my knowledge, information and belief, this bridge design is structurally adequate for the design loading shown on the plans. The design is an economical one for the style of structure and complies with requirements of the current 'AASHTO Standard Specifications for Highway Bridges'."



Alan D. Lukens
 Licensed Structural Engineer
 State of Illinois No. 081-005167
 License Expires November 30, 2006



LOCATION SKETCH

KLINGNER & ASSOCIATES, P.C.
 Engineers / Architects
 616 North 24th Street (217) 223-3670
 Quinoy, Illinois 62301 FAX: 223-3603
 Internet Address: www.klingner.com
 STATE OF ILLINOIS DESIGN FIRM # 1842738

REV. NO.	DRAWN	CHKD.	APPD.	DESCRIPTION	DATE
				F.A.S. RTE. 1588 OVER CURL CREEK SECTION 05-00189-00-BR Project RS-1588 (106) ADAMS COUNTY	12/05
GENERAL PLAN AND ELEVATION STRUCTURE NUMBER 001-3027 STATION 336+56					