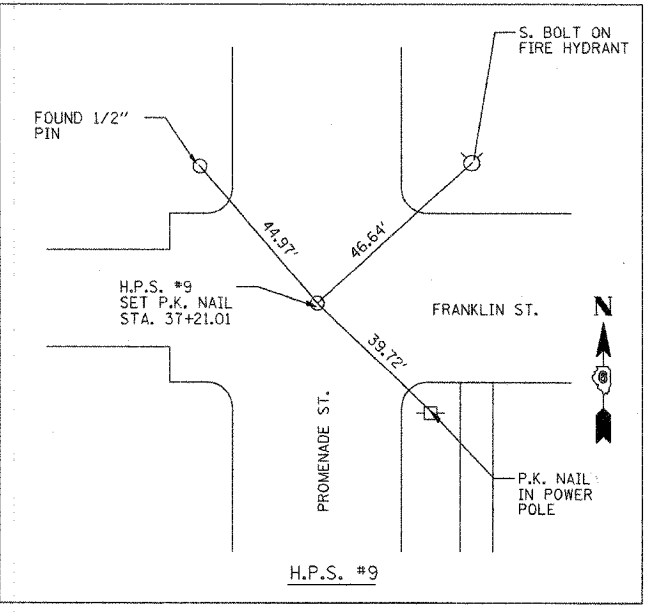
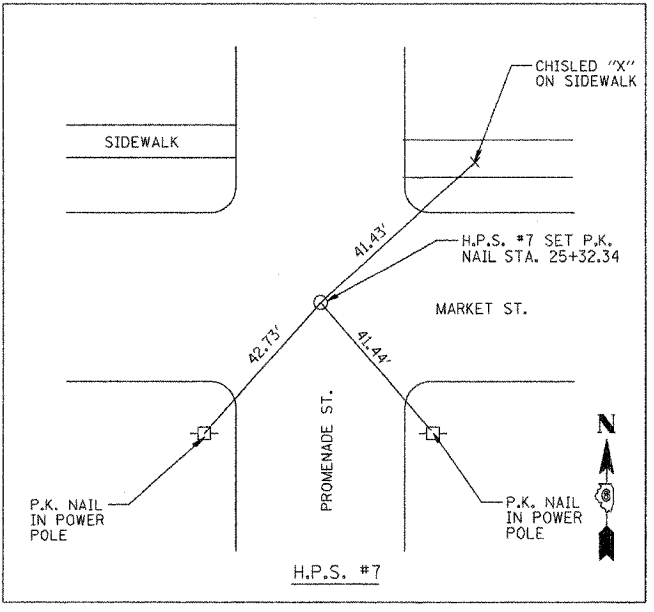
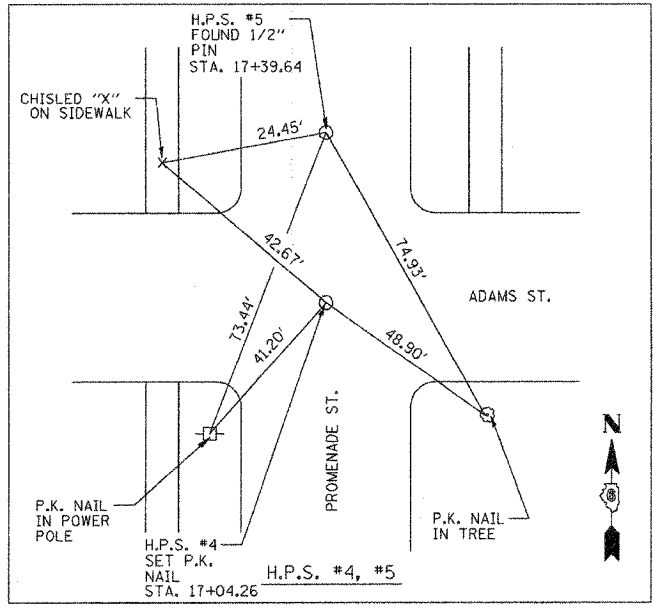
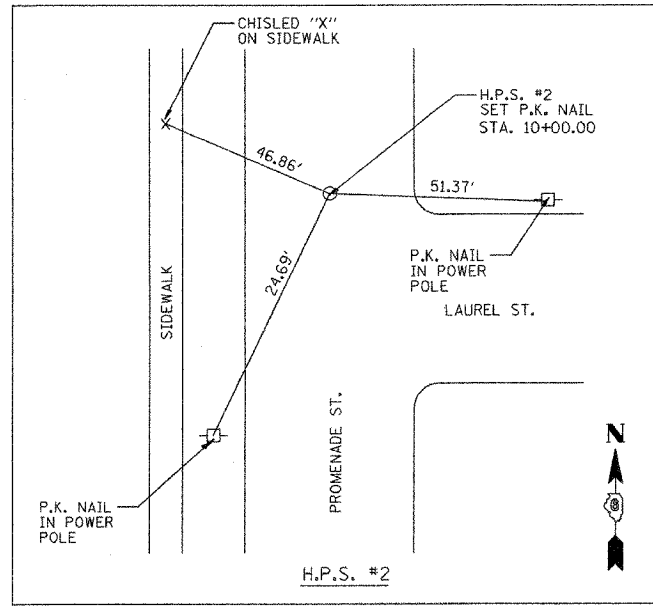
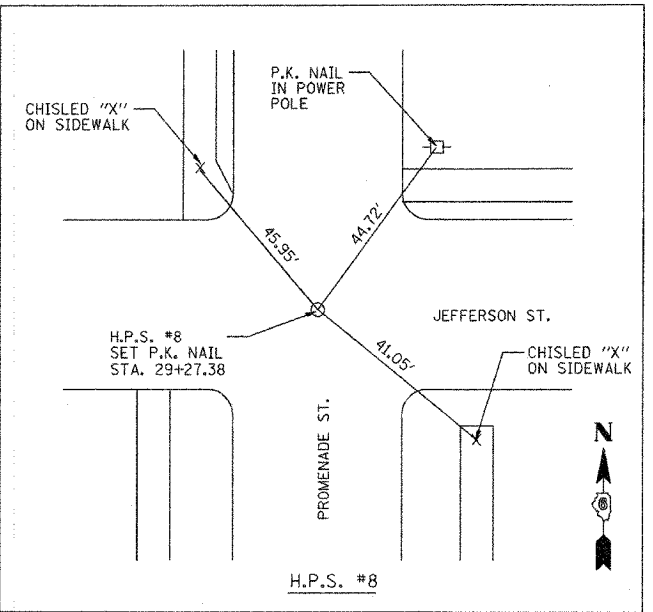
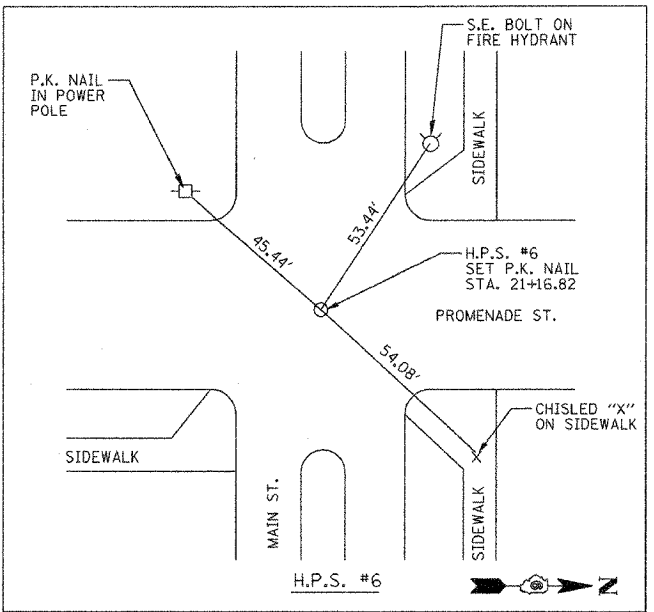
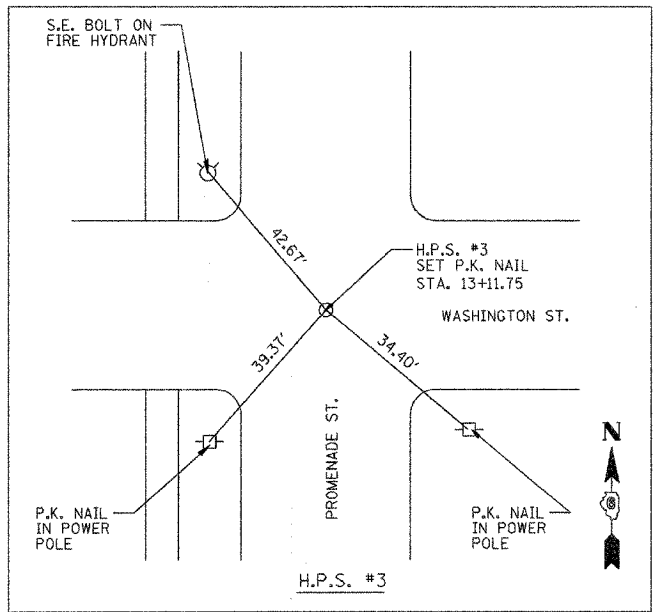
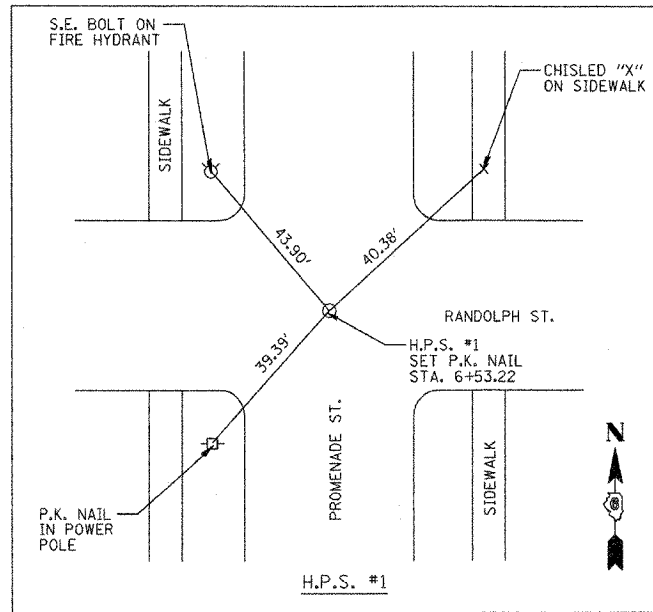
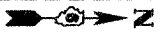


F.A.S. RTE.	SECTION	COUNTY	TOTAL SHEETS	SHEET NO.
567	04-00027-01-PV	MASON	79	3
STA.		TO STA.		
FED. ROAD DIST. NO.	ILLINOIS FED. AID PROJECT			



20:15:01 AM
 2/10/06 8:06 AM
 8 FILES

RET	8/04/05
RDJ	1/20/06
RXC	11/18/05

REVISIONS		ILLINOIS DEPARTMENT OF TRANSPORTATION
NAME	DATE	
		PROMENADE STREET (C.H. 20) ALIGNMENT TIES

SCALE: VERT. DATE 1/20/06
 DRAWN BY RDJ
 CHECKED BY RXC