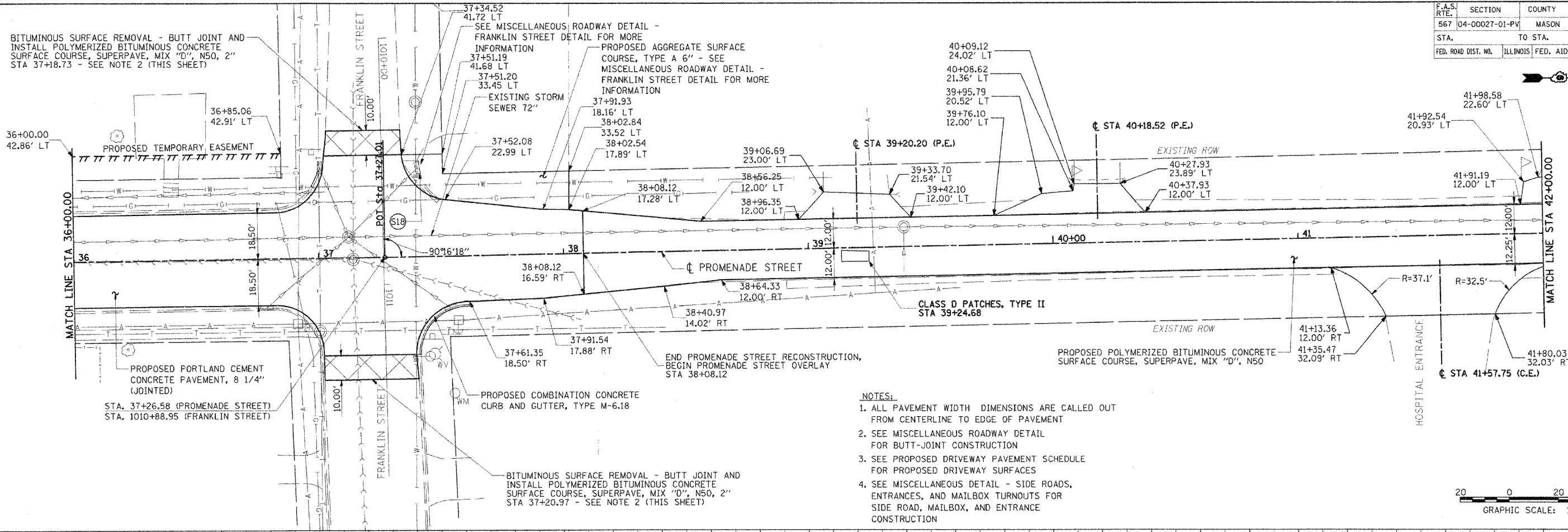
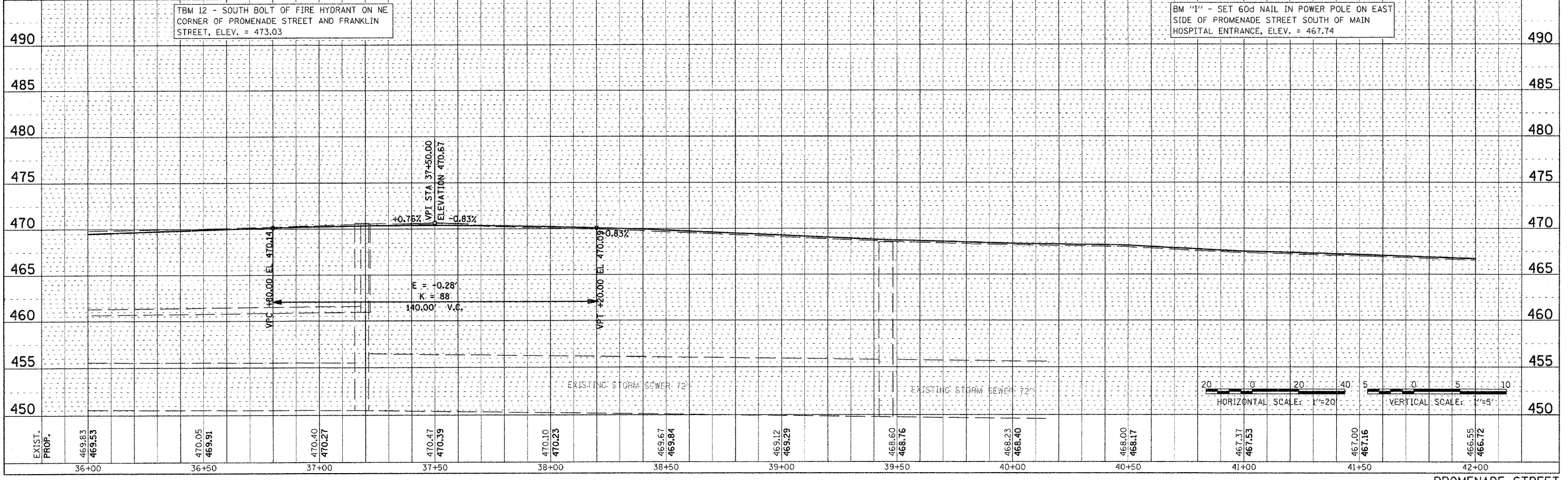
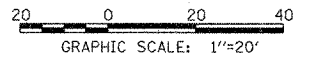


F.A.S. RTE.	SECTION	COUNTY	TOTAL SHEETS	SHEET NO.
567	04-00027-01-PV	MASON	79	25
STA.	TO STA.			
FED. ROAD DIST. NO.	ILLINOIS	FED. AID PROJECT		



- NOTES:**
1. ALL PAVEMENT WIDTH DIMENSIONS ARE CALLED OUT FROM CENTERLINE TO EDGE OF PAVEMENT
 2. SEE MISCELLANEOUS ROADWAY DETAIL FOR BUTT-JOINT CONSTRUCTION
 3. SEE PROPOSED DRIVEWAY PAVEMENT SCHEDULE FOR PROPOSED DRIVEWAY SURFACES
 4. SEE MISCELLANEOUS DETAIL - SIDE ROADS, ENTRANCES, AND MAILBOX TURNOUTS FOR SIDE ROAD, MAILBOX, AND ENTRANCE CONSTRUCTION



TBM 12 - SOUTH BOLT OF FIRE HYDRANT ON NE CORNER OF PROMENADE STREET AND FRANKLIN STREET, ELEV. = 473.03

BM "1" - SET 60d NAIL IN POWER POLE ON EAST SIDE OF PROMENADE STREET SOUTH OF MAIN HOSPITAL ENTRANCE, ELEV. = 467.74

PLAN	DATE
BY	
REVISION	
NO.	

PROFILE	DATE
BY	
REVISION	
NO.	

LAYOUT	DATE
BY	
REVISION	
NO.	

10:05:04 AM
2/24/06 2:28:06 PM
#FILE#