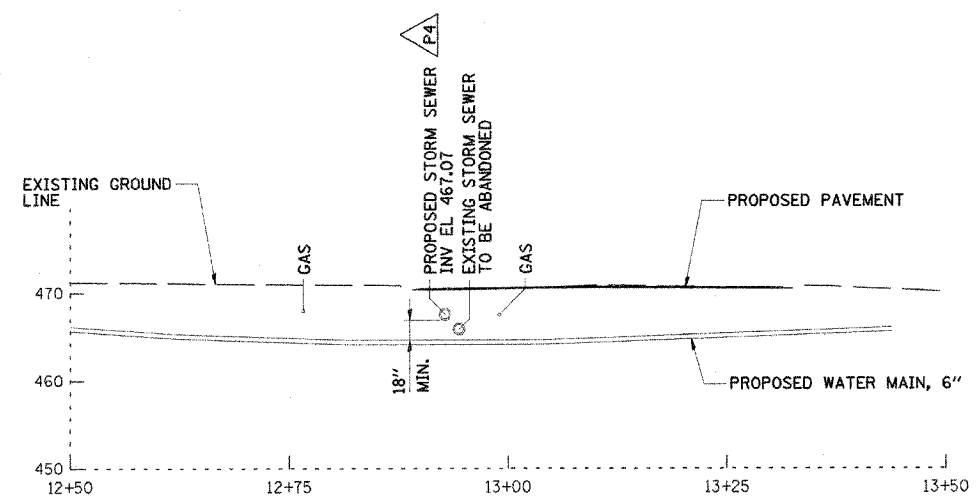
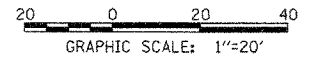
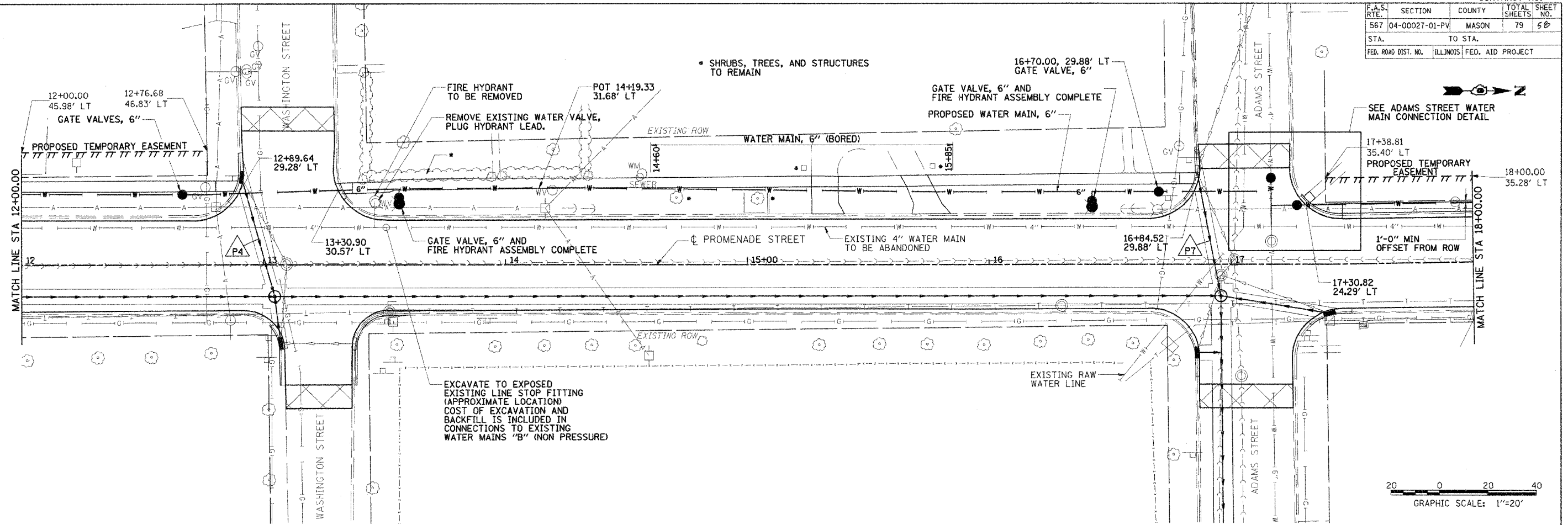
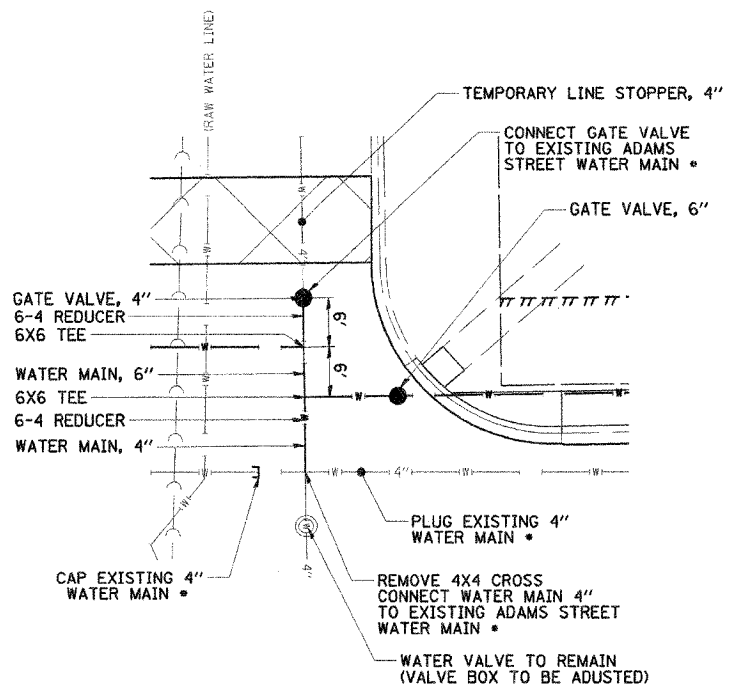


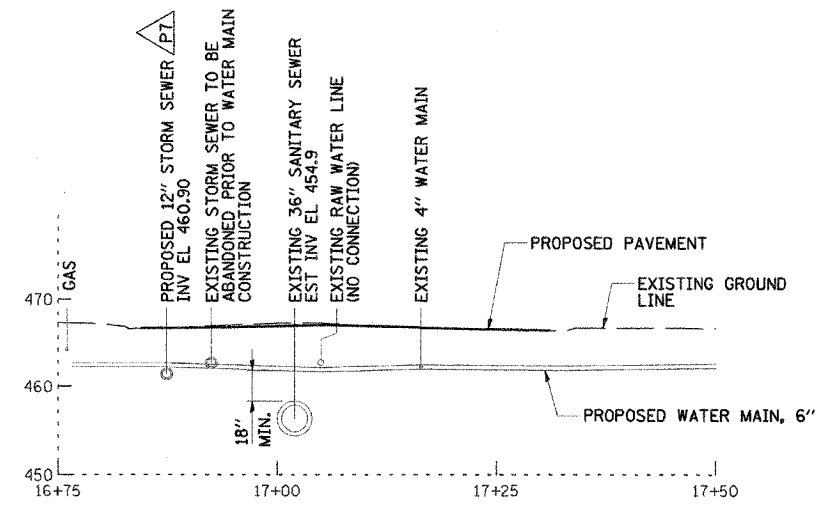
F.A.S. RTE.	SECTION	COUNTY	TOTAL SHEETS	SHEET NO.
567	04-00027-01-PV	MASON	79	58
STA.	TO STA.			
FED. ROAD DIST. NO.	ILLINOIS	FED. AID PROJECT		



WATER MAIN PROFILE AT WASHINGTON STREET
SCALE: 1" = 10'



ADAMS STREET WATER MAIN CONNECTION DETAIL
• INCLUDED IN CONNECTION TO EXISTING WATER MAINS "B" (NON PRESSURE)
SCALE: 1" = 10'



WATER MAIN PROFILE AT ADAMS STREET
SCALE: 1" = 10'

REVISIONS	
NAME	DATE

ILLINOIS DEPARTMENT OF TRANSPORTATION
PROMENADE STREET (C.H. 20)
WATER LINES AND UTILITIES

VERT. SCALE: 1" = 10'
HORIZ. SCALE: 1" = 20'
DATE: 11/18/05
DRAWN BY: TCJ
CHECKED BY: JAD

8/21/05 2:35 PM
 8/21/05 2:08 PM
 8/11/05

KEY	8/04/05
LAYOUT	TCJ
DRAWN	TCJ
REVIEWED	FXC