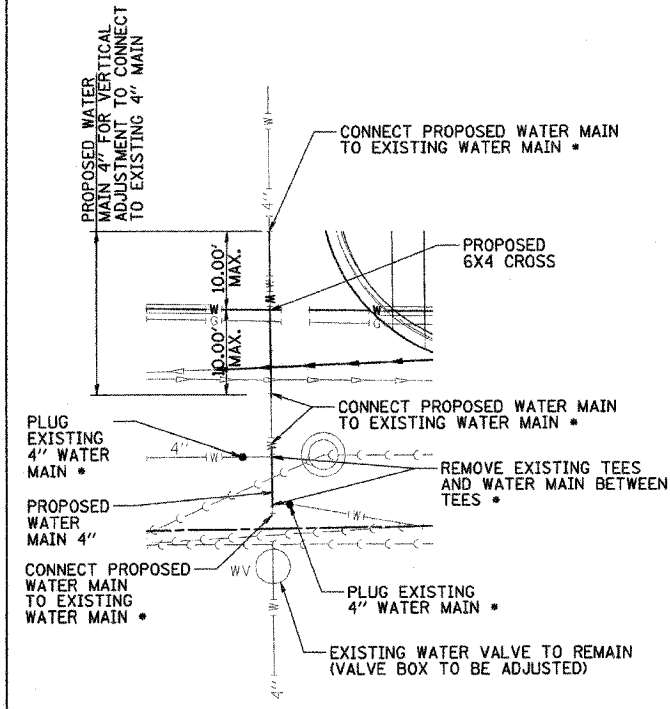
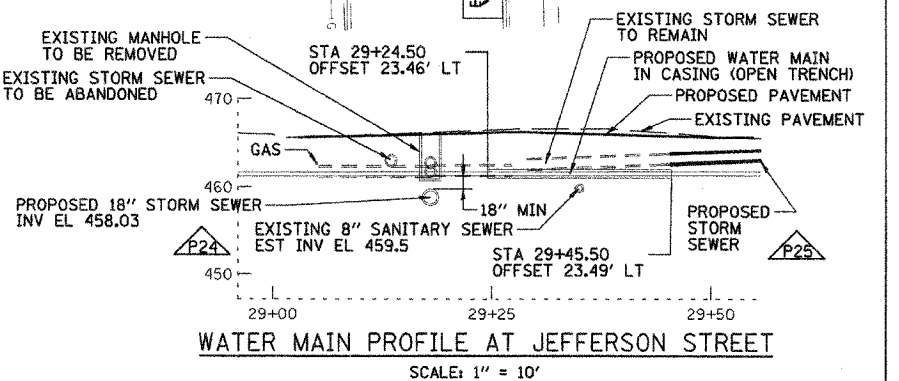
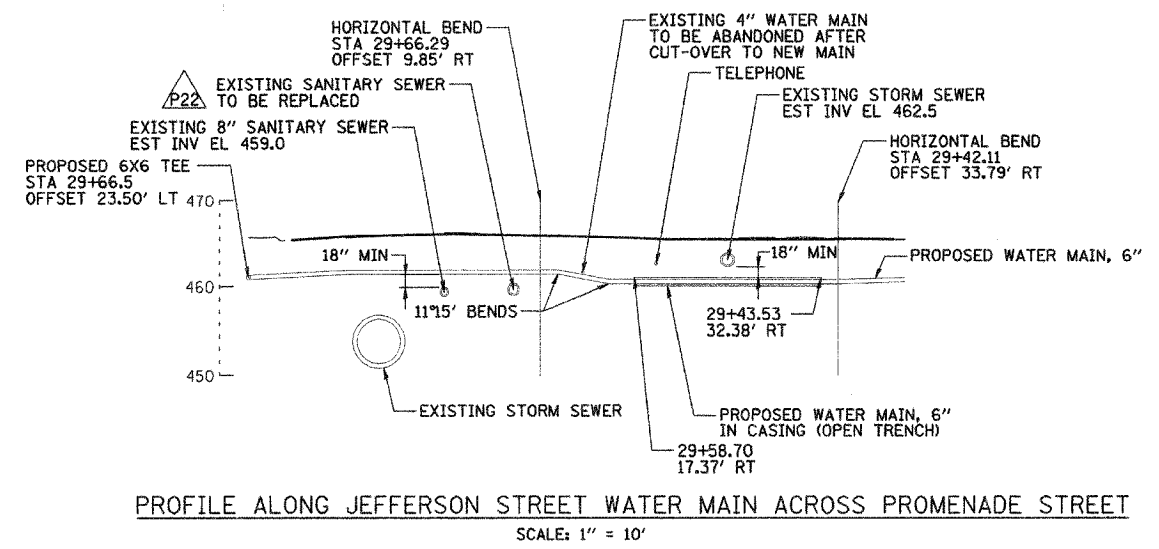
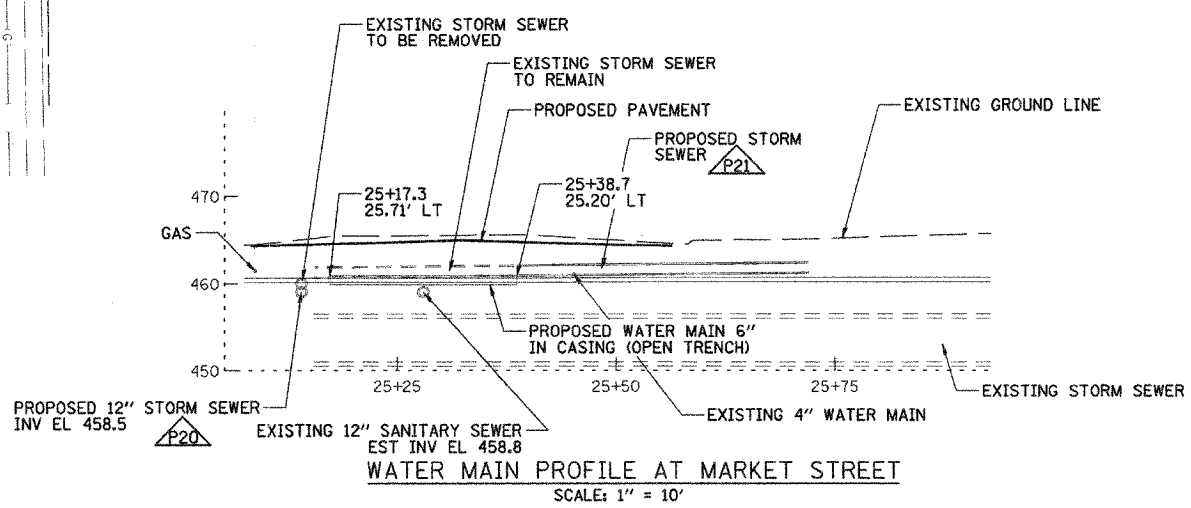
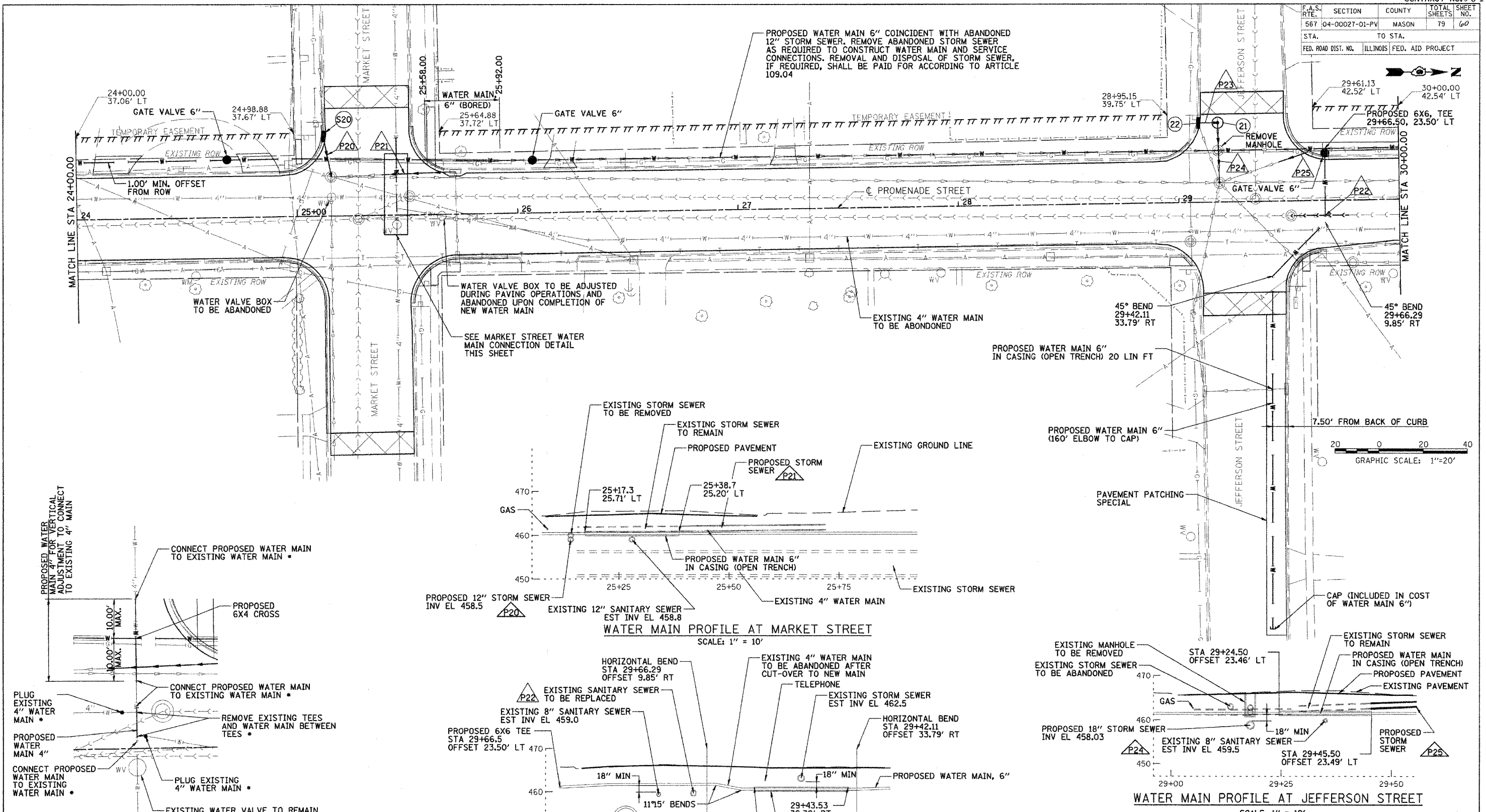


F.A.S. RTE.	SECTION	COUNTY	TOTAL SHEETS	SHEET NO.
567	04-00027-01-PV	MASON	79	60
STA.	TO STA.			
FED. ROAD DIST. NO.	ILLINOIS	FED. AID PROJECT		



MARKET STREET WATER MAIN CONNECTION DETAIL
 • INCLUDED IN CONNECTION TO EXISTING WATER MAINS "D" (NON PRESSURE)
 SCALE: 1" = 10'

REVISIONS	
NAME	DATE

ILLINOIS DEPARTMENT OF TRANSPORTATION
 PROMENADE STREET (C.H. 20)
 WATER LINES AND UTILITIES
 SCALE: VERT. 1" = 10'
 HORIZ. 1" = 20'
 DATE 02/01/06
 DRAWN BY TCJ
 CHECKED BY JAD

02/01/06 PM
 02/01/06
 03:31
 #FILES
 KET 8/04/05
 EJM 2/01/06
 JAD 2/02/06