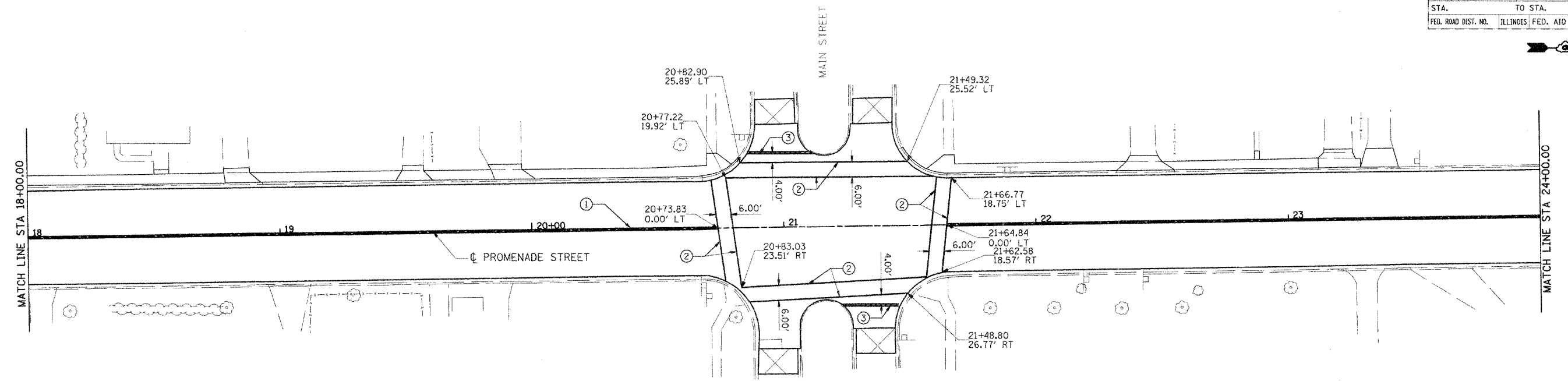
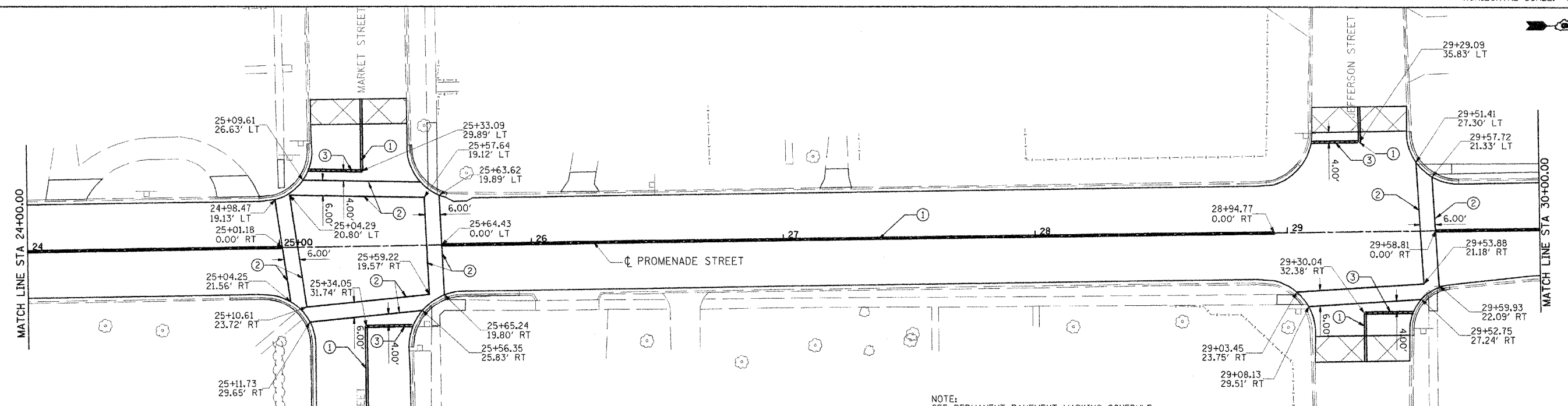
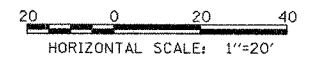


F.A.S. No.	SECTION	COUNTY	TOTAL SHEETS	SHEET NO.
567	04-00027-01-PV	MASON	79	71
STA.	TO STA.			
FED. ROAD DIST. NO.	ILLINOIS	FED. AID PROJECT		



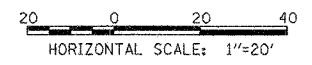
- PERMANENT STRIPING LEGEND**
- ① PAINT PAVEMENT MARKING LINE - 4" DOUBLE YELLOW
  - ② PAINT PAVEMENT MARKING LINE - 6" SOLID WHITE
  - ③ PAINT PAVEMENT MARKING LINE - 24" SOLID WHITE - STOP BAR

NOTE:  
SEE PERMANENT PAVEMENT MARKING SCHEDULE  
FOR MORE INFORMATION ON PERMANENT  
PAVEMENT MARKING



- PERMANENT STRIPING LEGEND**
- ① PAINT PAVEMENT MARKING LINE - 4" DOUBLE YELLOW
  - ② PAINT PAVEMENT MARKING LINE - 6" SOLID WHITE
  - ③ PAINT PAVEMENT MARKING LINE - 24" SOLID WHITE - STOP BAR

NOTE:  
SEE PERMANENT PAVEMENT MARKING SCHEDULE  
FOR MORE INFORMATION ON PERMANENT  
PAVEMENT MARKING



REVISIONS	
NAME	DATE

ILLINOIS DEPARTMENT OF TRANSPORTATION

PROMENADE STREET (C.H. 20)  
PAVEMENT MARKING PLANS

SCALE: VERT.  
HORIZ.  
DATE 11/14/05

DRAWN BY RDJ  
CHECKED BY RXC

3:34:51 PM  
 02/07/2006 09:34 PM  
 #71218  
 LAYOUT KLT 8/04/05  
 DRAWN TCJ 1/24/06  
 REVIEWED RXC 2/03/06