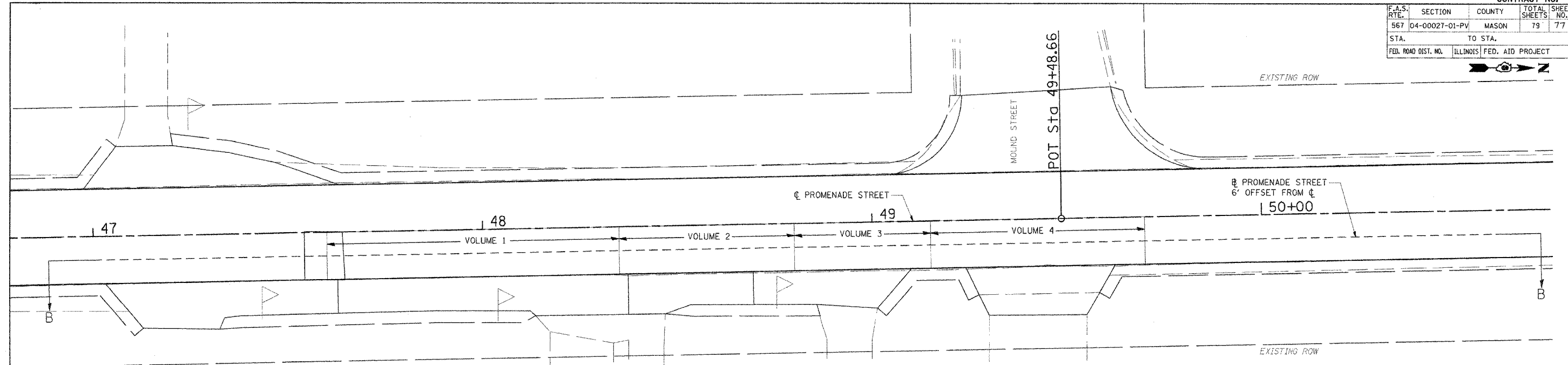
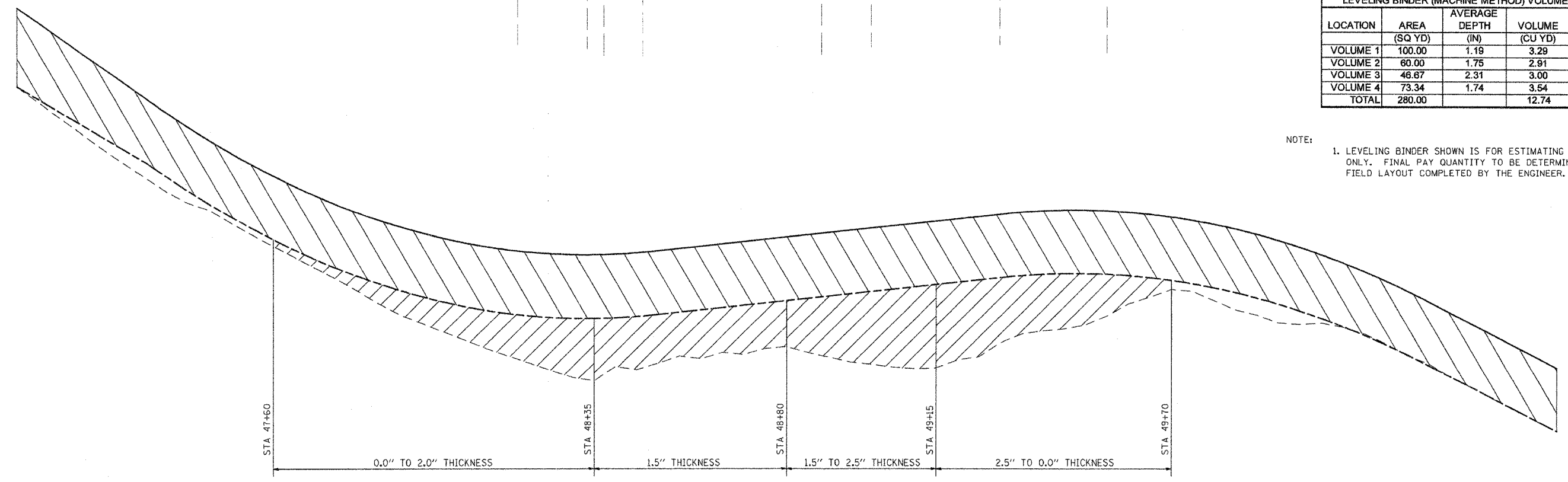


F.A.S. RTE.	SECTION	COUNTY	TOTAL SHEETS	SHEET NO.
567	04-00027-01-PV	MASON	79	77
STA.	TO STA.			
FED. ROAD DIST. NO.	ILLINOIS	FED. AID PROJECT		



LOCATION	AREA (SQ YD)	AVERAGE DEPTH (IN)	VOLUME (CU YD)	WEIGHT (TON)
VOLUME 1	100.00	1.19	3.29	6.64
VOLUME 2	60.00	1.75	2.91	5.87
VOLUME 3	46.67	2.31	3.00	6.04
VOLUME 4	73.34	1.74	3.54	7.14
TOTAL	280.00		12.74	25.69

NOTE:
1. LEVELING BINDER SHOWN IS FOR ESTIMATING PURPOSES ONLY. FINAL PAY QUANTITY TO BE DETERMINED AFTER FIELD LAYOUT COMPLETED BY THE ENGINEER.



LEGEND:

	POLYMERIZED BITUMINOUS CONCRETE SURFACE COURSE, SUPERPAVE, MIX "D", N50
	LEVELING BINDER (MACHINE METHOD), SUPERPAVE N50

SECTION B-B
STATION 47+00 TO STATION 50+00

REVISIONS		ILLINOIS DEPARTMENT OF TRANSPORTATION
NAME	DATE	
		PROMENADE STREET (C.H. 20) MISCELLANEOUS OVERLAY DETAIL NORTHBOUND LANE
SCALE:	VERT. 8/04/05	DRAWN BY JLW
DATE:		CHECKED BY RXC

31,541.00 FM
 02/07/2006, 03:34 PM
 \$FILES