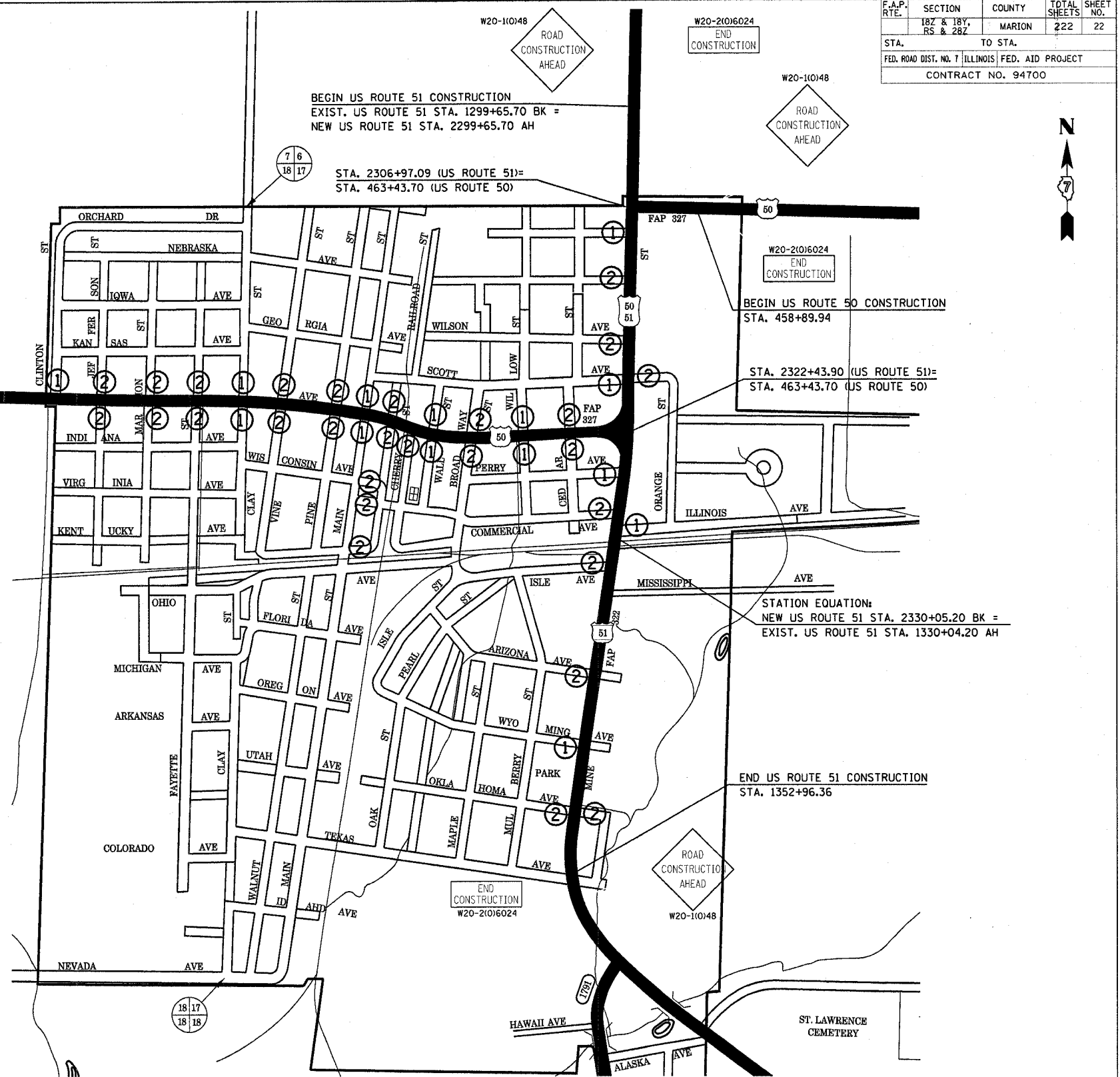


F.A.P. RTE.	SECTION	COUNTY	TOTAL SHEETS	SHEET NO.
187 & 18Y, RS & 28Z		MARION	222	22
STA.	TO STA.			
FED. ROAD DIST. NO. 7	ILLINOIS	FED. AID PROJECT		
CONTRACT NO. 94700				

PLAN	DATE
SURVEYED	BY
PLOTTED	
CHECKED	
REVISION	
NO. OF WAYS CHECKED	
SAID FILE NAME	

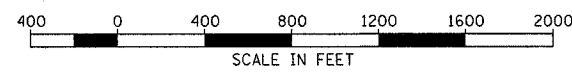


**GENERAL NOTES:**

1. PLACE ADVANCED WARNING SIGNS (SEE STANDARD PLANS).
2. EXISTING SIGNS THAT ARE IN CONFLICT WITH CONSTRUCTION SHALL BE COVERED OR REMOVED AS DIRECTED BY THE ENGINEER.
3. RELOCATE CONSTRUCTION SIGNS AS NEEDED TO FIT FIELD CONDITIONS, OR AS DIRECTED BY THE ENGINEER.
4. CONSTRUCTION IS ALLOWED ON ONE SIDE OF ROUTES 50 AND 51 AT A TIME. SEE STAGE CONSTRUCTION.
5. STREETS MARKED WITH A ① MUST REMAIN OPEN WHILE STREETS MARKED WITH A ② MAY BE COMPLETELY CLOSED DURING CONSTRUCTION.
6. AFTER STREETS MARKED WITH A ② ARE CONSTRUCTED AND REOPENED, STREETS MARKED WITH A ① MAY BE COMPLETELY CLOSED DURING CONSTRUCTION.
7. STREETS ON CUL-DE-SAC OR STREETS WITH NO OTHER OUTLET MUST REMAIN OPEN AT ALL TIMES AND CONSTRUCTED HALF AT A TIME.
8. TYPE I BARRICADES SHALL BE LOCATED ON THE EXISTING EDGE OF PAVEMENT DURING WORKING HOURS AND SHALL BE LOCATED OFF OF THE EXISTING EDGE OF PAVEMENT DURING NON-WORKING HOURS. EXTENDED LEG BARRICADES WITH LIGHTS ARE REQUIRED WHERE THE EDGE DROP OFF IS 3" OR GREATER.
9. ACCESS TO PRIVATE PROPERTY SHALL BE MAINTAINED AT ALL TIMES.
10. FOR ALL TEMPORARY OR PERMANENT PAINT STRIPING REMOVAL, WATER BLASTING WILL BE REQUIRED. CONTRACTOR SHALL SUPPLY WATER. NO DIRECT PAY.
11. TEMPORARY PAVEMENT MARKING SHALL COMPLY WITH SECTION 703, IDOT STANDARD SPECIFICATIONS FOR ROAD AND BRIDGE CONSTRUCTION.
12. WORK ZONE TRAFFIC CONTROL SHALL COMPLY WITH SECTION 701, IDOT STANDARD SPECIFICATIONS FOR ROAD AND BRIDGE CONSTRUCTION.
13. A MINIMUM OF 1 WEEK ADVANCE NOTICE IS REQUIRED PRIOR TO ANY CLOSURE OR CHANGES IN TRAFFIC HANDLING FOR THE DURATION OF THIS PROJECT. NOTICE SHALL BE GIVEN IN WRITING TO THE ENGINEER AND TO THE CITY OF SANDOVAL.
14. ANY CLOSURE OF THE EXISTING RAILROAD CROSSING MUST MEET THE APPROVAL OF THE ENGINEER.
15. THE CONTRACTOR SHALL MAINTAIN ALL PEDESTRIAN CROSSINGS AT ALL TIMES.

**RECOMMENDED STAGING SEQUENCE:**

- PLACE ADVANCED WARNING SIGNS (SEE STANDARD PLANS)
- STAGE 1A - CONSTRUCT STORM SEWER AND REMOVAL ITEMS, PATCHING, MILLING, BINDER, AND LEVEL BINDER WITH STRINGLINE, INCLUDING TEMPORARY AGGREGATE BASE WIDEN EAST SIDE OF RTE. 51 FROM STA. 2299+89.87 TO STA. 2306+97.09. CONTRACTOR AT HIS OPTION MAY ELECT TO CONSTRUCT CURB AND GUTTER IN COMBINATION WITH THE ABOVE.
  - STAGE 1B - BASE WIDEN NORTHEAST CORNER OF RTE. 51/50E (NORTH INTERSECTION) FROM STA. 2305+64.76 TO STA. 2306+97.09 INCLUDING STA. 458+89.94 TO STA. 463+43.70, ROUTE 50.
  - STAGE 1C - BASE WIDEN SOUTHEAST CORNER OF RTE. 51/50E (NORTH INTERSECTION) FROM STA. 2306+97.09 TO STA. 1352+96.77 INCLUDING STA. 458+89.94 TO STA. 463+43.70, ROUTE 50.
  - STAGE 2A - BASE WIDEN WEST SIDE OF RTE. 51 FROM STA. 2299+89.87 TO 2320+38.98.
  - STAGE 2B - BASE WIDEN WEST SIDE OF RTE 51 FROM STA. 2324+15.55 TO STA. 1352+96.77
  - STAGE 3A - REMOVE GRASS ISLAND AT RTE. 51/50W (SOUTH INTERSECTION) AND BASE WIDEN.
  - STAGE 3B - BASE WIDEN SOUTHWEST CORNER OF RTE. 51/50W (SOUTH INTERSECTION) FROM STA. 2324+15.55 TO STA. 2324+15.55 INCLUDING STA. 463+43.70 TO STA. 466+00.00, ROUTE 50.
  - STAGE 3C - BASE WIDEN NORTHWEST CORNER OF RTE. 51/50W (SOUTH INTERSECTION) FROM STA. 2320+64.95 TO STA. 2322+43.90 INCLUDING STA. 463+43.70 TO STA. 465+50.00, ROUTE 50.
  - STAGE 4A - BASE WIDEN NORTH SIDE OF RTE. 50 FROM STA. 465+50.00 TO STA. 538+40.00.
  - STAGE 4B - BASE WIDEN SOUTH SIDE OF RTE. 50 FROM STA. 466+00.00 TO STA. 538+40.00.



REVISIONS	
NAME	DATE

ILLINOIS DEPARTMENT OF TRANSPORTATION

**MAINTENANCE OF TRAFFIC ROUTES 51/50**

SCALE: AS NOTED  
DATE #DATE#

DRAWN BY MMH  
CHECKED BY AEF

REVISED 3/28/06

##DATE##  
DATE TIME  
DATE TIME  
REF-  
REF-