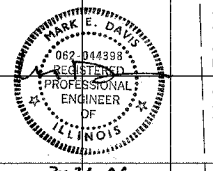
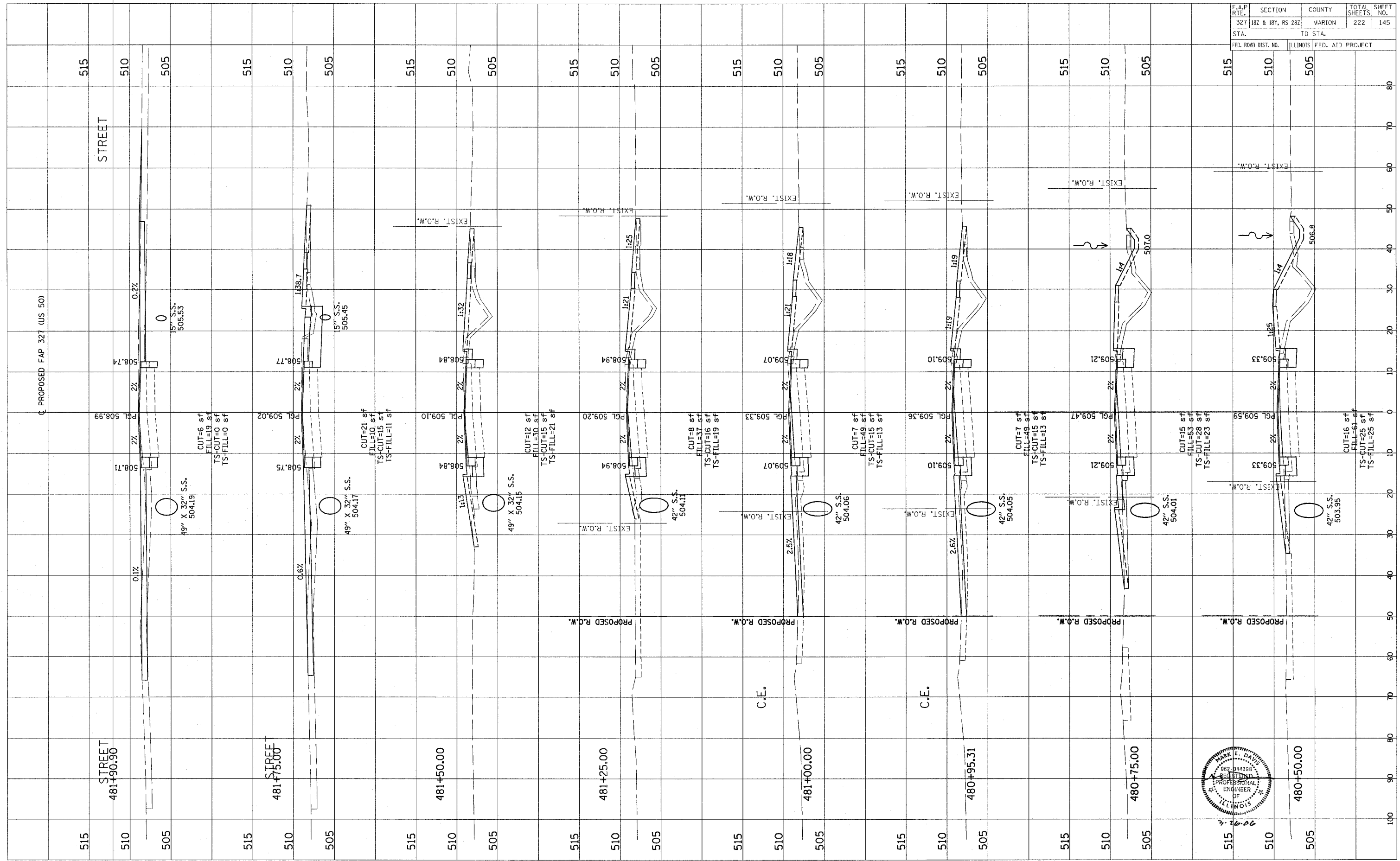


FINAL SURVEY	DATE
SURVEYED	BY
NOTE BOOK	
TEMPLATE	
AREAS	
CHECKED	

ORIGINAL SURVEY	DATE
SURVEYED	BY
NOTE BOOK	
TEMPLATE	
AREAS	
CHECKED	

F.A.P. RTE.	SECTION	COUNTY	TOTAL SHEETS	SHEET NO.
327	18Z & 18Y, RS 28Z	MARION	222	145
STA.	TO STA.			
FED. ROAD DIST. NO.	ILLINOIS FED. AID PROJECT			



CONTRACT NO. 94700

Revised 3/28/06