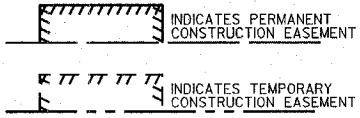
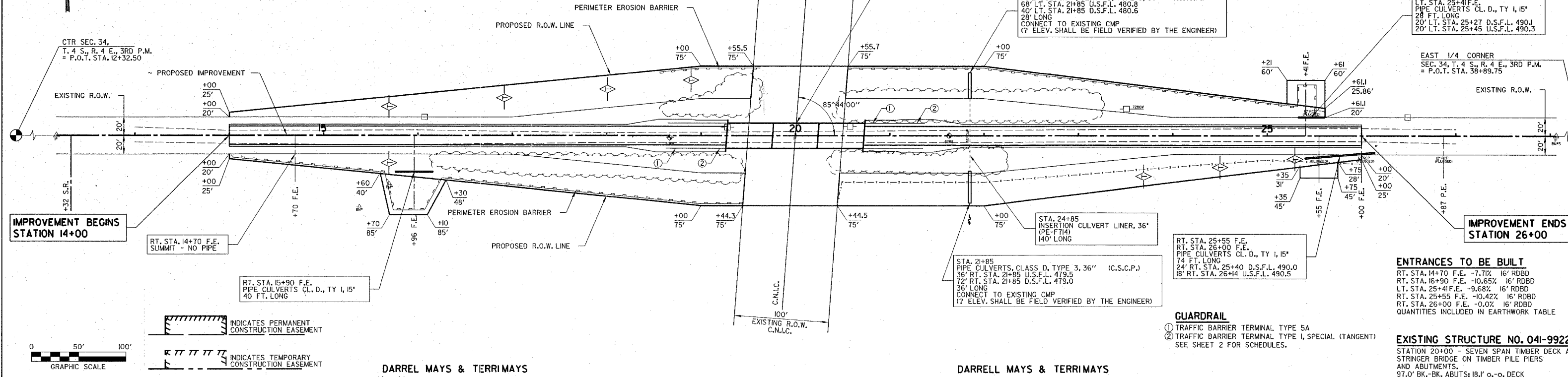
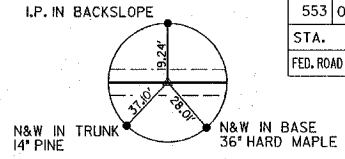
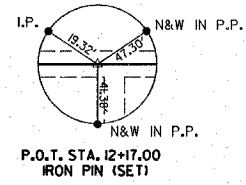


**SAM HALLIGAN & LINDA HALLIGAN**  
 SW 1/4, NE 1/4, SEC 34, T. 4 S., R. 4 E., 3RD P.M.

**MARK A. WHITE & THERESA WHITE**  
 SW 1/4, NE 1/4, SEC 34, T. 4 S., R. 4 E., 3RD P.M.

T.R.	SECTION	COUNTY	TOTAL SHEETS
553	03-10117-00-BR	JEFFERSON	19
STA.	TO STA.		
FED. ROAD DIST. NO.	ILLINOIS	CONTRACT NO. 95423	
MOORES PRAIRIE ROAD DISTRICT			



- GUARDRAIL**
- ① TRAFFIC BARRIER TERMINAL TYPE 5A
  - ② TRAFFIC BARRIER TERMINAL TYPE 1, SPECIAL (TANGENT)
- SEE SHEET 2 FOR SCHEDULES.

**ENTRANCES TO BE BUILT**

- RT. STA. 14+70 F.E. -7.71% 16' RDBD
- RT. STA. 16+90 F.E. -10.65% 16' RDBD
- LT. STA. 25+41 F.E. -9.68% 16' RDBD
- RT. STA. 25+55 F.E. -10.42% 16' RDBD
- RT. STA. 26+00 F.E. -0.00% 16' RDBD

QUANTITIES INCLUDED IN EARTHWORK TABLE

**EXISTING STRUCTURE NO. 041-9922**

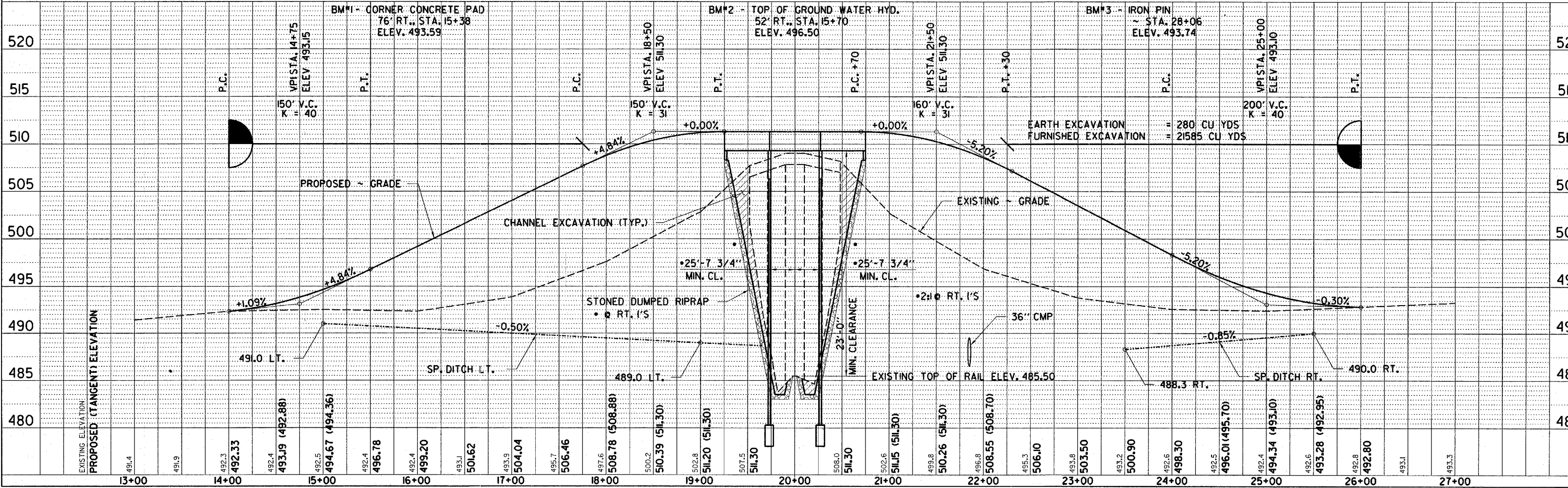
STATION 20+00 - SEVEN SPAN TIMBER DECK AND STRINGER BRIDGE ON TIMBER PILE PIERS AND ABUTMENTS.

37'0" BK.-BK. ABUTS; 18'1" o.-o. DECK

REMOVAL OF EXISTING STRUCTURES = EACH

**DARREL MAYS & TERRIMAYS**  
 NW 1/4, SE 1/4, SEC 34, T. 4 S., R. 4 E., 3RD P.M.

**DARRELL MAYS & TERRIMAYS**  
 NW 1/4, SE 1/4, SEC 34, T. 4 S., R. 4 E., 3RD P.M.



DATE	BY	DATE	BY

DATE	BY	DATE	BY

DATE	BY	DATE	BY