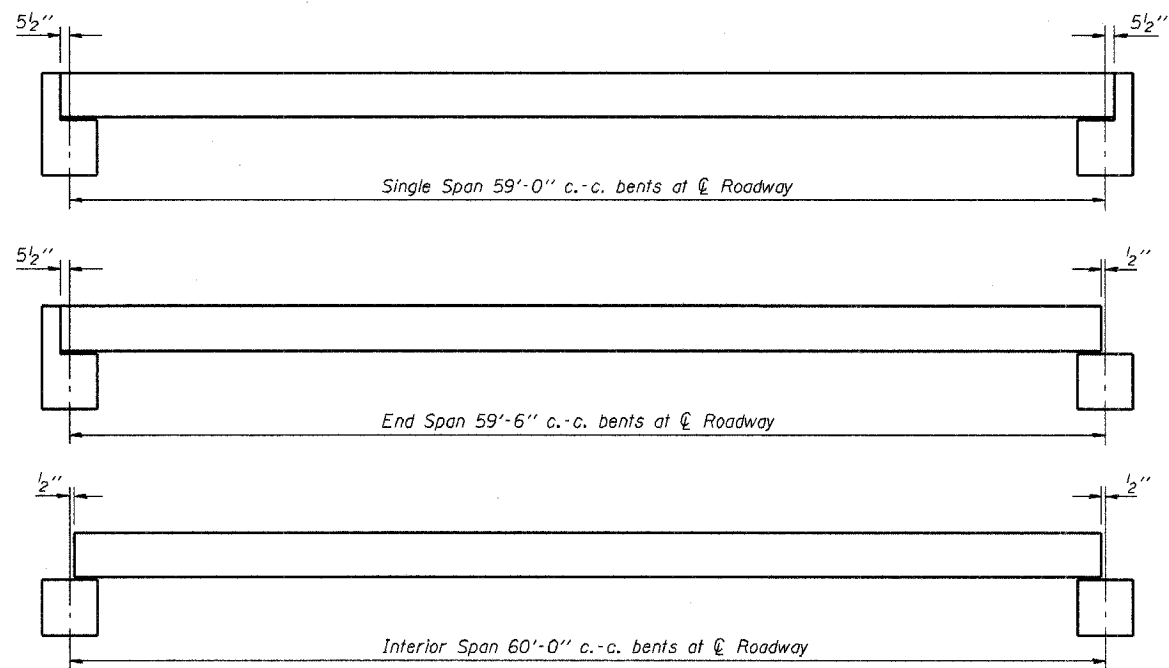
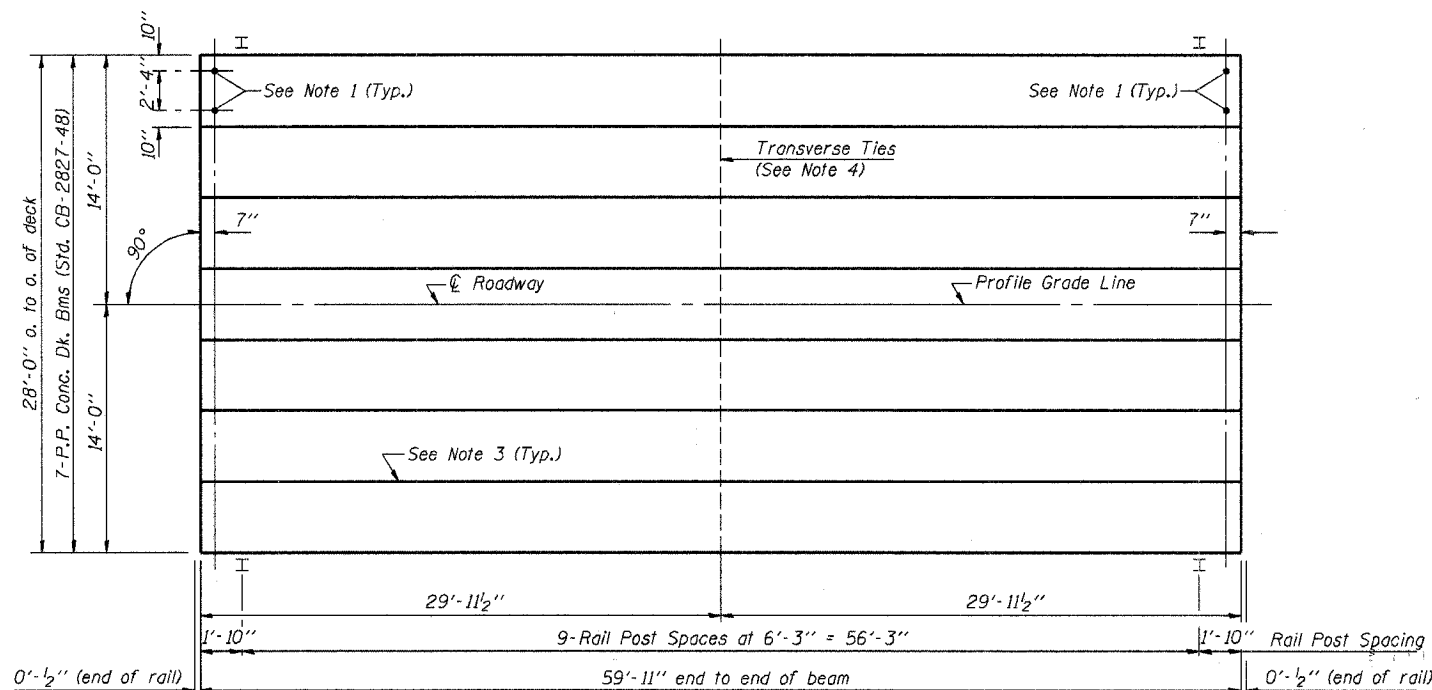


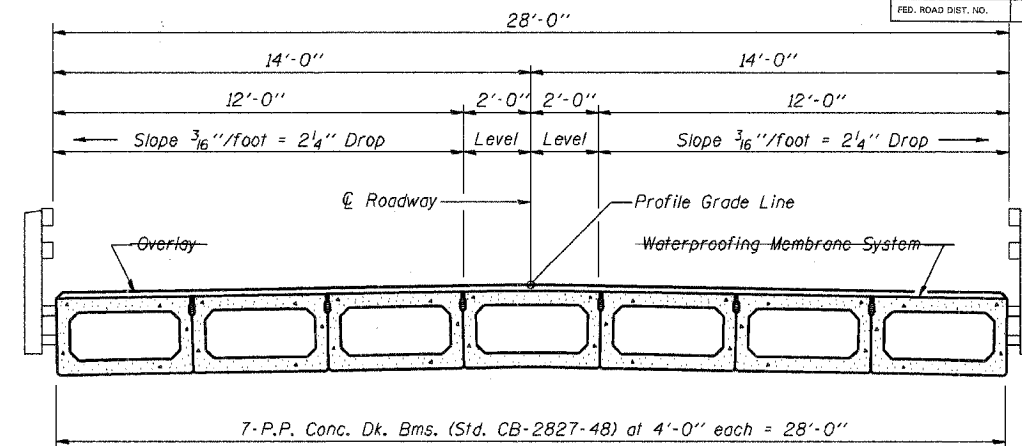
F.A.S. ROUTE NO.	SECTION	COUNTY	TOTAL SHEETS	SHEET
25-06/29-00-BA	CRAWFORD	9	4	
STA.	TO STA.			
FED. ROAD DIST. NO.	ILLINOIS	PROJECT		



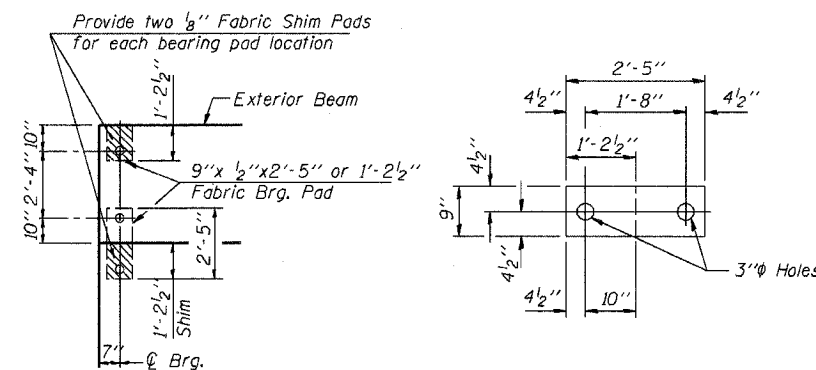
TYPICAL ELEVATIONS



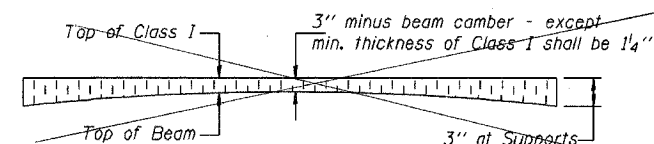
PLAN



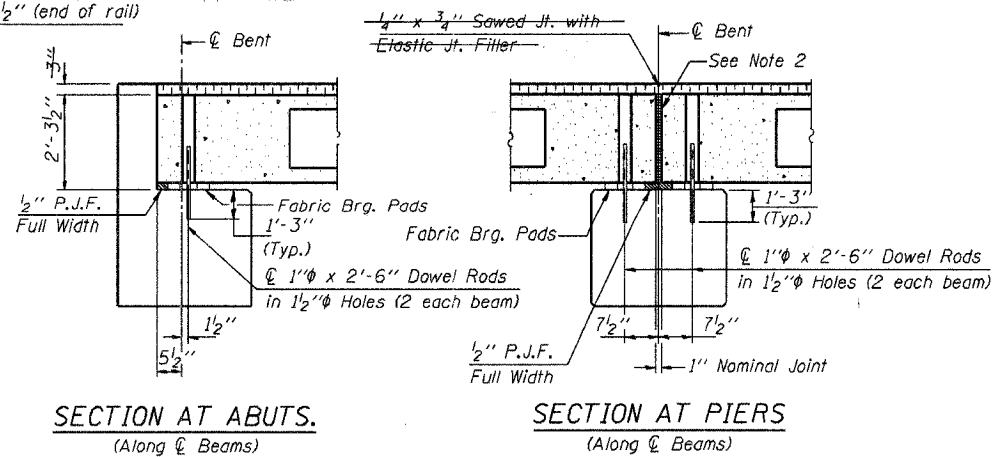
CROSS SECTION



1/2" FABRIC BRG. PAD DETAILS



PROFILE OF OVERLAY



SECTION AT ABUTS.
(Along centerline of Beams)

SECTION AT PIERS
(Along centerline of Beams)

NOTES

1. After beams have been erected, holes shall be drilled into substructure and anchor dowels placed. Dowel holes shall be filled with non-shrink grout to top of beam and allowed to cure min. 24 hrs. prior to grouting the shear keys.
2. Nominal 1" joint at centerline of Pier shall be filled with non-shrink grout.
3. Longitudinal keys shall be grouted WITH NON-SHRINK GROUT
4. The 1" diameter rods in the transverse tie assembly shall be tightened to a snug fit and the threads set. Pockets that receive transverse tie bar outside shall be filled with grout after transverse tie assembly is in place.

QUANTITIES FOR ONE SPAN

P.P. Conc. Dk. Bm. 27" Dp.	1680 Sq. Ft.
Steel Rolling	120 Ft.
Waterproofing Membrane System	186.7 Sq. Yds.
Portland Cement Mortar	360 Ft.
Fairing Course	360 Ft.

Note: Quantity of overlay for one span = 21.9 Tons

P.P.C. DECK BEAM
SUPERSTRUCTURE

28' RDWY. 27" BMS. 60' SPAN 0° SKEW

STANDARD CS-2827-60

Illinois Department of Transportation

PASSED APRIL 4, 2005

Theresa S. [Signature]

Engineer of Bridge Design

APPROVED APRIL 4, 2005

Ralph E. [Signature]

Engineer of Bridges and Structures

1861-1-1 03/15/51