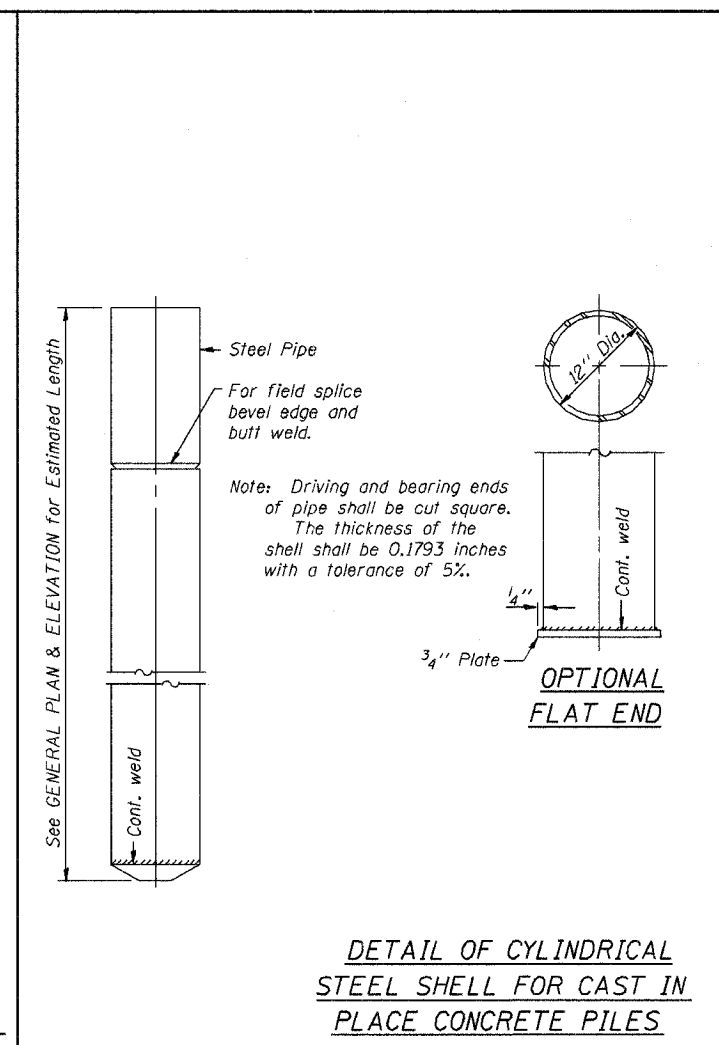
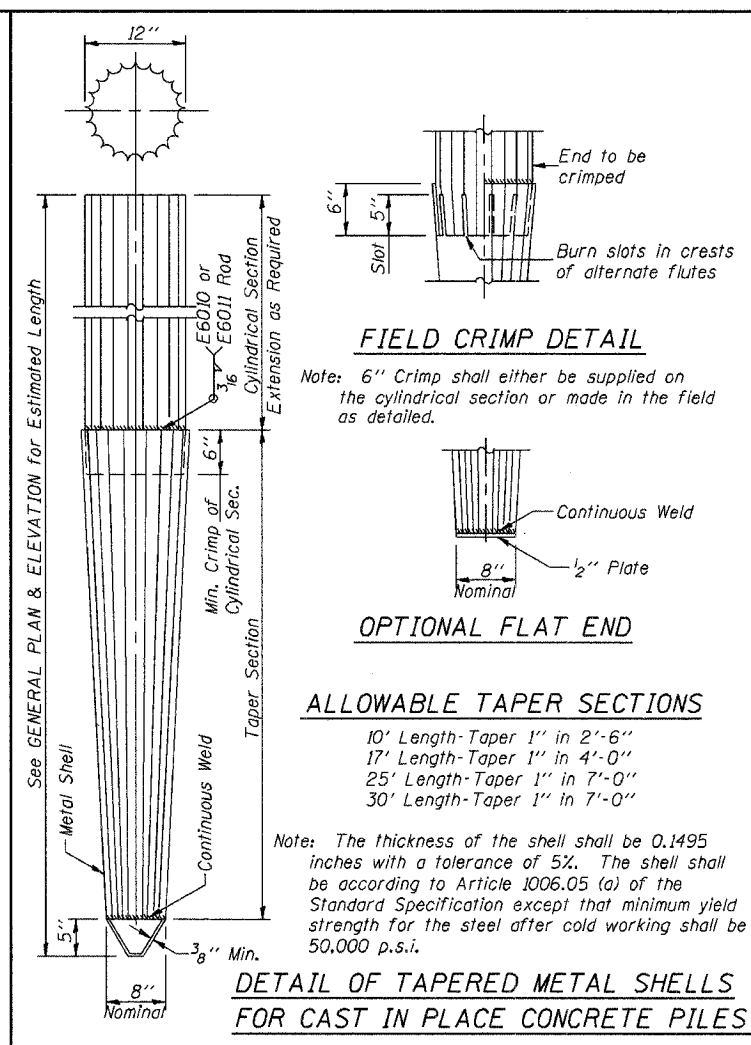
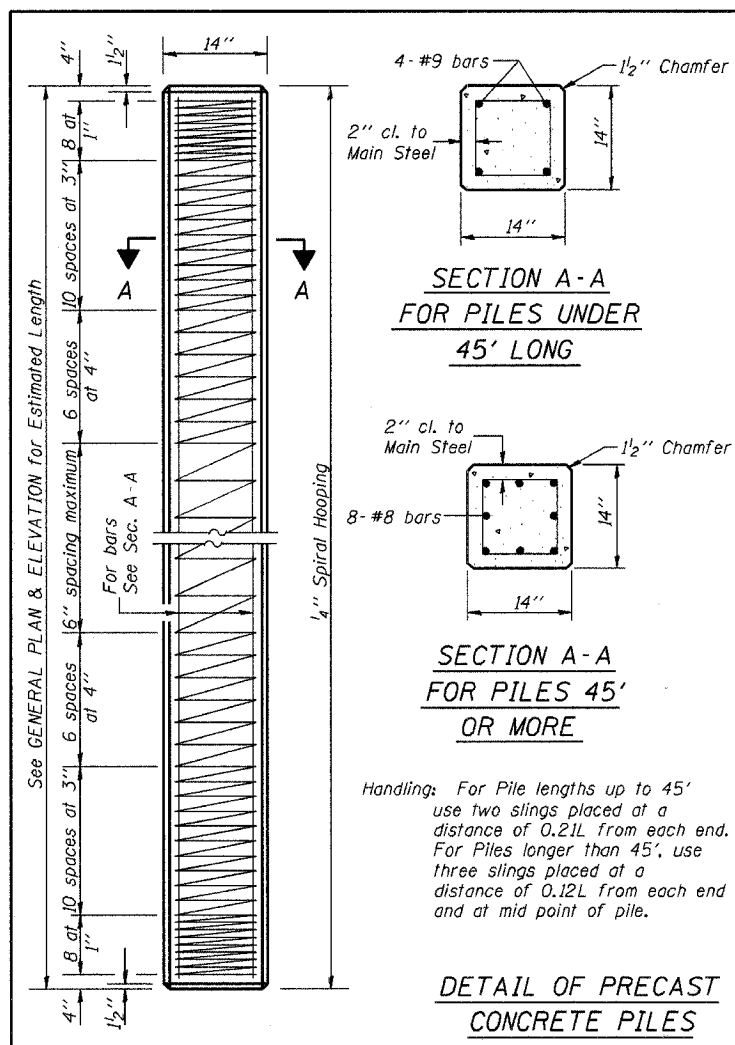


|                     |          |         |              |       |
|---------------------|----------|---------|--------------|-------|
| ROUTE NO.           | SECTION  | COUNTY  | TOTAL SHEETS | SHEET |
| 05-06129-00         | CRAWFORD |         | 9            | 9     |
| STA.                | TO STA.  |         |              |       |
| FED. ROAD DIST. NO. | ILLINOIS | PROJECT |              |       |

Reinforcement cage shall be omitted when Concrete Encasement is provided.

The cost of Reinforcement is included with the Cost of Furnishing Piles.



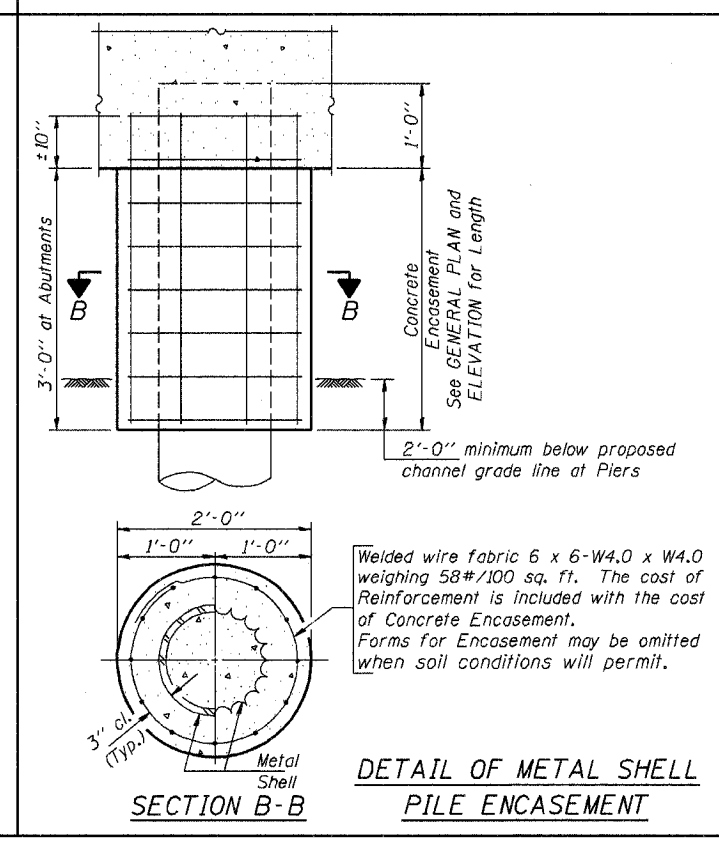
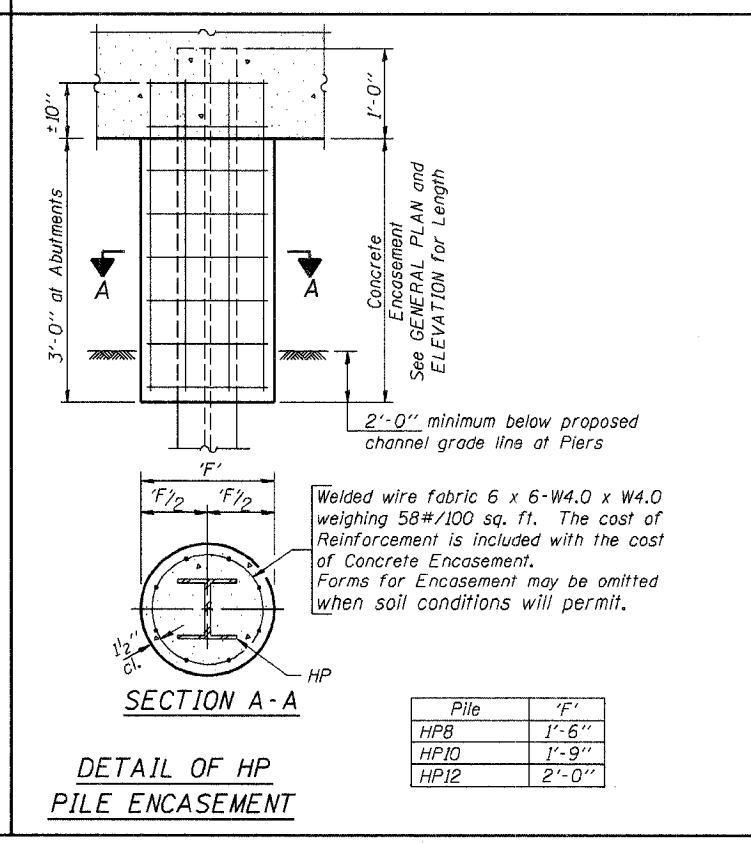
Illinois Department of Transportation

PASSED FEBRUARY 1, 2000

Thomas J. Donagale  
Engineer of Bridge Design

APPROVED FEBRUARY 1, 2000

Ralph E. Anderson  
Engineer of Bridges and Structures



**QUANTITIES/FT. OF ENCASEMENT (STEEL PILES)**

| Pile Size | Item                | Quantity   |
|-----------|---------------------|------------|
| HP8       | Concrete Encasement | 0.063 C.Y. |
| HP10      | Concrete Encasement | 0.086 C.Y. |
| HP12      | Concrete Encasement | 0.112 C.Y. |

**(METAL SHELL PILES)**

| Pile Size | Item                | Quantity   |
|-----------|---------------------|------------|
| 12" Dia.  | Concrete Encasement | 0.087 C.Y. |

**PILE DETAILS**

**STANDARD CX-1**