

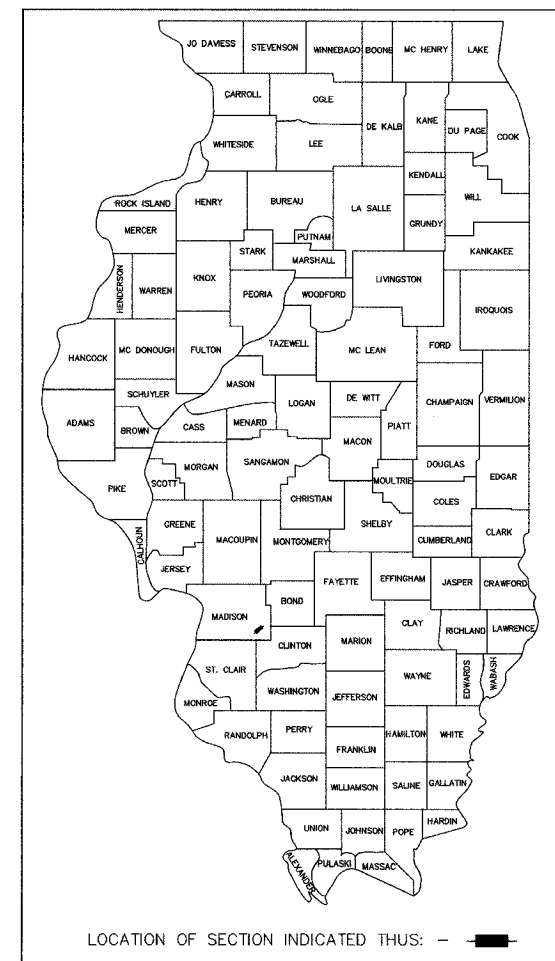
INDEX OF SHEETS

1. COVER SHEET
2. GENERAL NOTES & LEGEND
3. SUMMARY OF QUANTITIES
4. TYPICAL SECTION
5. EXISTING CONDITIONS/REMOVAL PLAN
6. CIVIL SITE PLAN
7. PAVING PLAN
8. GRADING & DRAINAGE PLAN
- 9-10. EROSION AND SEDIMENT CONTROL
11. DETENTION BASIN DETAILS & BORING LOGS
12. MISCELLANEOUS CONSTRUCTION DETAILS
13. PLANS, ELEVATIONS & DETAILS
14. WALL AND BUILDING SECTIONS
15. ELECTRICAL PLANS & DETAILS
16. ELECTRICAL SCHEDULES & DETAILS
17. STRUCTURAL NOTES
18. STRUCTURAL DETAILS

STATE OF ILLINOIS DEPARTMENT OF TRANSPORTATION DIVISION OF HIGHWAYS

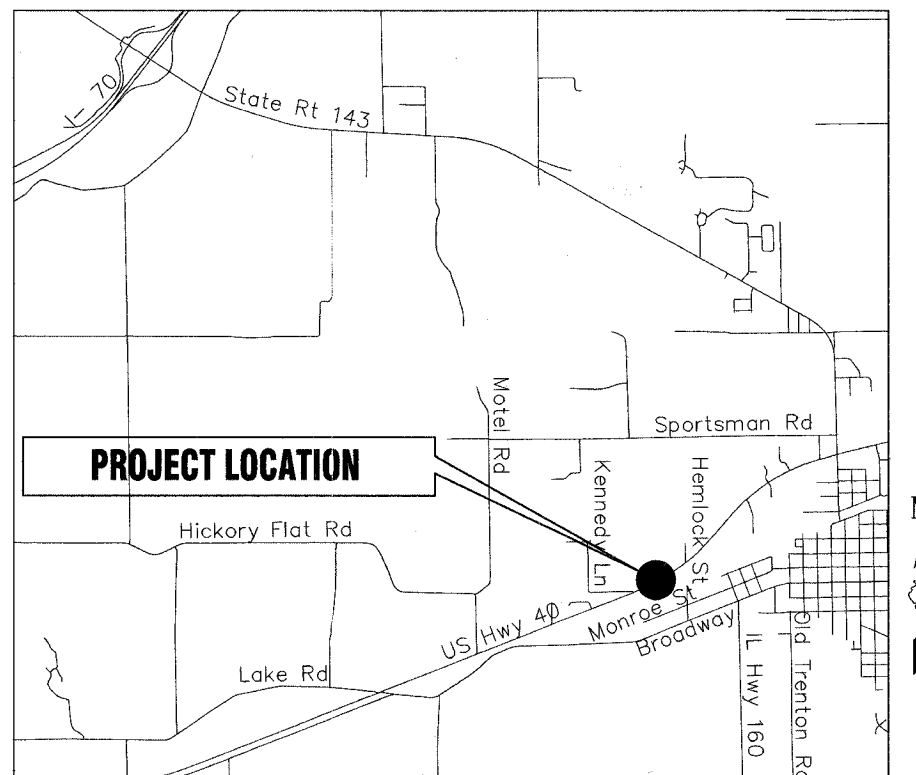
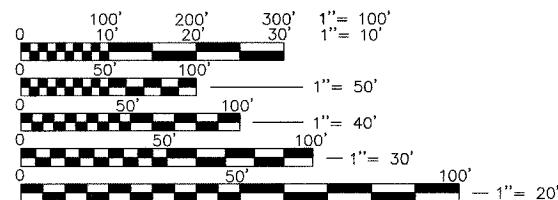
HIGHLAND PARK-RIDE IMPROVEMENTS MADISON COUNTY TRANSIT DISTRICT

**SECTION NO. 00-00012-00-PK
PROJECT NO. CMM-5011(215)
MADISON COUNTY
JOB NO. C-98-173-00**



STANDARDS

- 000001-04
- 280001-02
- 420001-06
- 606401
- 701006-02
- 701301-02
- 702001-05
- 720001
- 720006
- 780001-01
- BLR 10-5



LOCATION MAP
SCALE: 1" = 1000'
SECTION 6, T. 3 N., R. 5 W., 3RD P.M.

FULL SIZE PLANS HAVE BEEN PREPARED USING STANDARD ENGINEERING SCALES, REDUCED SIZED PLANS WILL NOT CONFORM TO STANDARD SCALES, IN MAKING MEASUREMENTS ON REDUCED PLANS, THE ABOVE SCALES MAY BE USED.

J.U.L.I.E.
JOINT UTILITY LOCATION INFORMATION FOR EXCAVATION
1-800-892-0123

STATE OF ILLINOIS
DEPARTMENT OF TRANSPORTATION
DIVISION OF HIGHWAYS

APPROVED Dec 20, 2005
[Signature]
LOCAL AGENCY OFFICIAL

PASSED 1-4, 2006
[Signature]
LOCAL ROADS AND STREETS ENGINEER

APPROVED 1-4, 2006
[Signature]
MARY C. LAMIE, P.E.
DEPUTY DIRECTOR OF HIGHWAYS
REGION FIVE ENGINEER

Ronald A. Keepes 12/20/05
RONALD A. KEEPPES, P.E. No. 062-48711 DATE
(Printed by Authority of the State of Illinois)
Job No. E054401



Expires 11/30/07